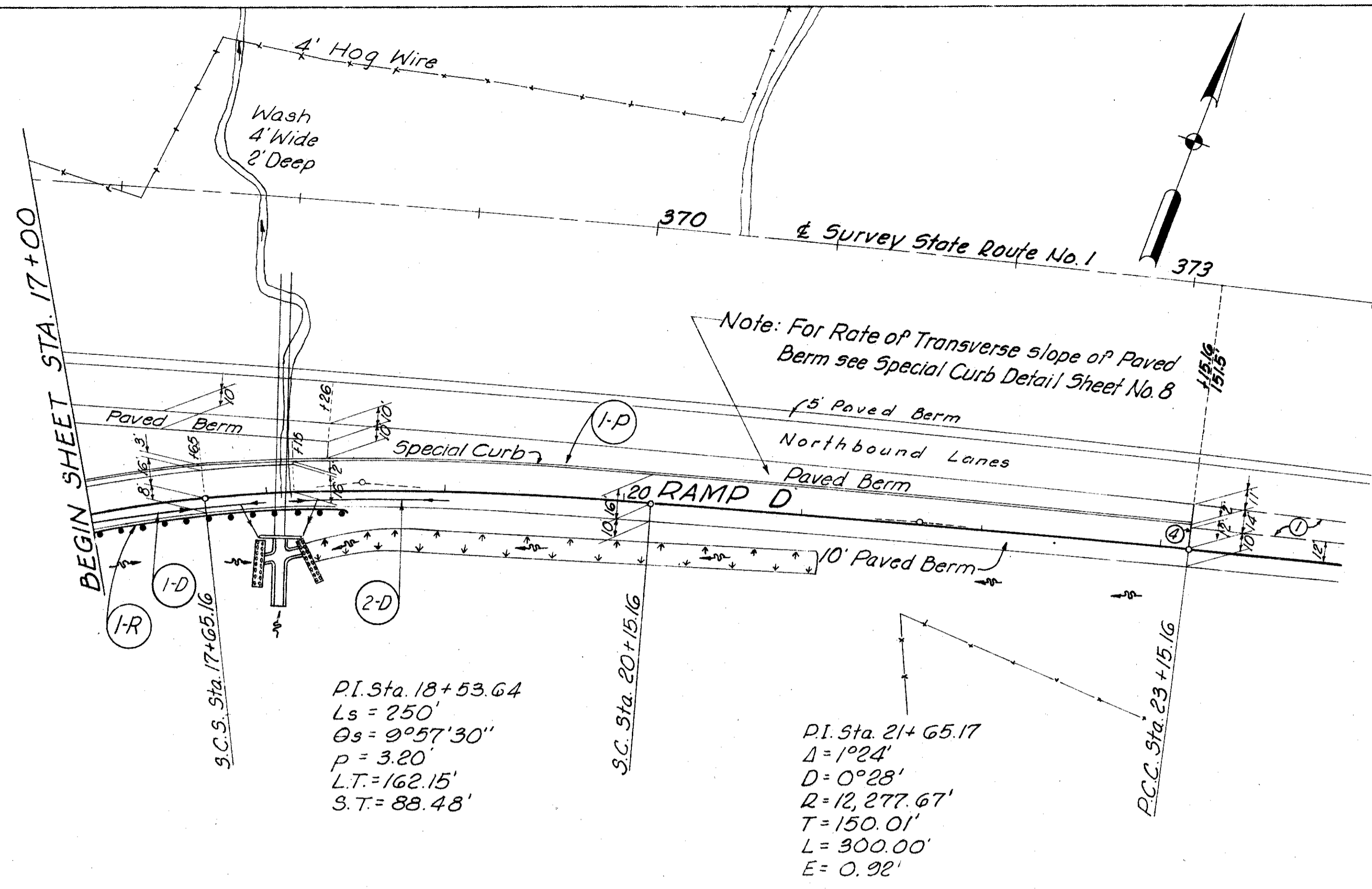


DATE	
BY	
SURVEYED	
PLOTTED	
NOTE BOOK	
AREAS CHECKED	
NO.	

DATE	
BY	
SURVEYED	
PLOTTED	
NOTE BOOK	
AREAS CHECKED	
NO.	



P.I. Sta. 18+53.64
 Ls = 250'
 Os = 9°57'30"
 p = 3.20
 L.T. = 162.15'
 S.T. = 88.48'

P.I. Sta. 21+65.17
 Δ = 1°24'
 D = 0°28'
 R = 12,277.67'
 T = 150.01'
 L = 300.00'
 E = 0.92'

LEGEND

- ① Standard Longitudinal Joint
- ② Standard Key Joint without Tie Bars
- ③ Expansion Joint without Dowels (Loc. on radial lines)
- ④ Expansion Joint with Dowels

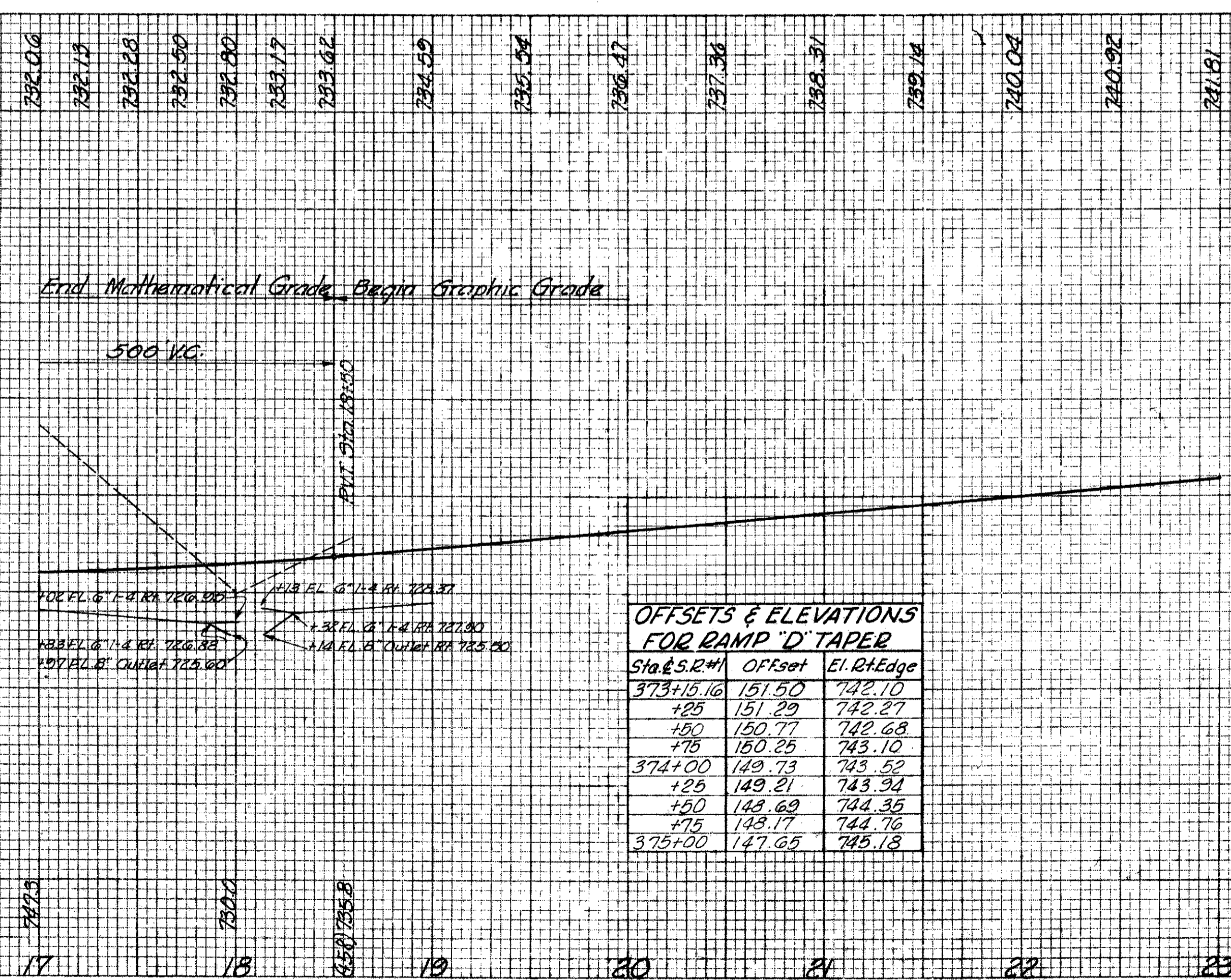
FED. RD. DIVISION	STATE	PROJECT
2	OHIO	I-1103 (20) S-46 (7)

LAKE COUNTY
LAK-1-4.02

This sheet supersedes
Sheet No. 202
Added 3-24-50 R.E.C.

Ref. No.	Station		Side &	I-12 Conc. Curb Special Lin. Ft.	I-15 Grd. Rail Dwg. No. 2-B Lin. Ft.
	From	To			
1-B	17+00	18+40	Rt.		140.00
1-P	17+00	23+15.16	Lt.	617	
Totals				617	140.00

See Sh. No.	Ref. No.	Station		Side &	I-4		I-5		S-29	
		From	To		Underdrain Deep	Pipe Outlet For Underdrain Sec. M. @ 4.00	Underdrains 6" 16'-Y Branch	Drainage Of Structures No. 2 Aggregate	Each	Cu. Yds.
	1-D	17+00	18+02	Rt.	6"	8"		1	0.30	
	2-D	18+13	19+04	Rt.	105	10		1	0.30	
Totals					220	20	2	0.60		



STA.	LT. EDGE	RA on &	STA.	LT. EDGE	RB on &
15+15.16	734.11	733.86	19+25	735.61	735.07
125	733.94	733.66	150	736.00	735.64
150	733.56	733.21	175	736.39	736.02
175	733.25	732.83	20+00	736.76	736.47
16+00	733.01	732.52	+15.16	736.98	736.73
125	732.88	732.29	125	737.17	736.92
150	732.77	732.14	150	737.61	737.36
175	732.76	732.06	175	738.06	737.81
17+00	732.83	732.06	21+00	738.50	738.25
125	732.98	732.13	125	738.95	738.70
150	733.20	732.28	150	739.39	739.14
165.16	733.37	732.41	175	739.84	739.59
175	733.43	732.50	22+00	740.29	740.04
18+00	733.66	732.80	125	740.74	740.49
125	734.05	733.17	150	741.17	740.92
150	734.41	733.62	175	741.63	741.38
175	734.82	734.11	23+00	742.06	741.81
19+00	735.21	734.50	+15.16	742.35	742.10

Sta. & S.R.#	Offset	El. Rt. Edge
373+15.16	151.50	742.10
+25	151.29	742.27
+50	150.77	742.68
+75	150.25	743.10
374+00	149.73	743.52
+25	149.21	743.94
+50	148.69	744.35
+75	148.17	744.76
375+00	147.65	745.18

REVISIONS: 3-18-60 Grade Raise for 16'-4" Br.C.I.

MICHAEL BAKER JR., CONSULTING ENGINEERS
ROCHESTER, PENNSYLVANIA

STATE OF OHIO
DEPARTMENT OF HIGHWAYS
STATE HIGHWAY NO. 1
C-44
S.R. NO. 306 INTERCHANGE RAMP-D
STA. 17+00 TO STA. 23+00

Designed	Drawn	Traced	Checked	Reviewed	Date	Revised
H.V.	K.A.	J.H.	E.H.			