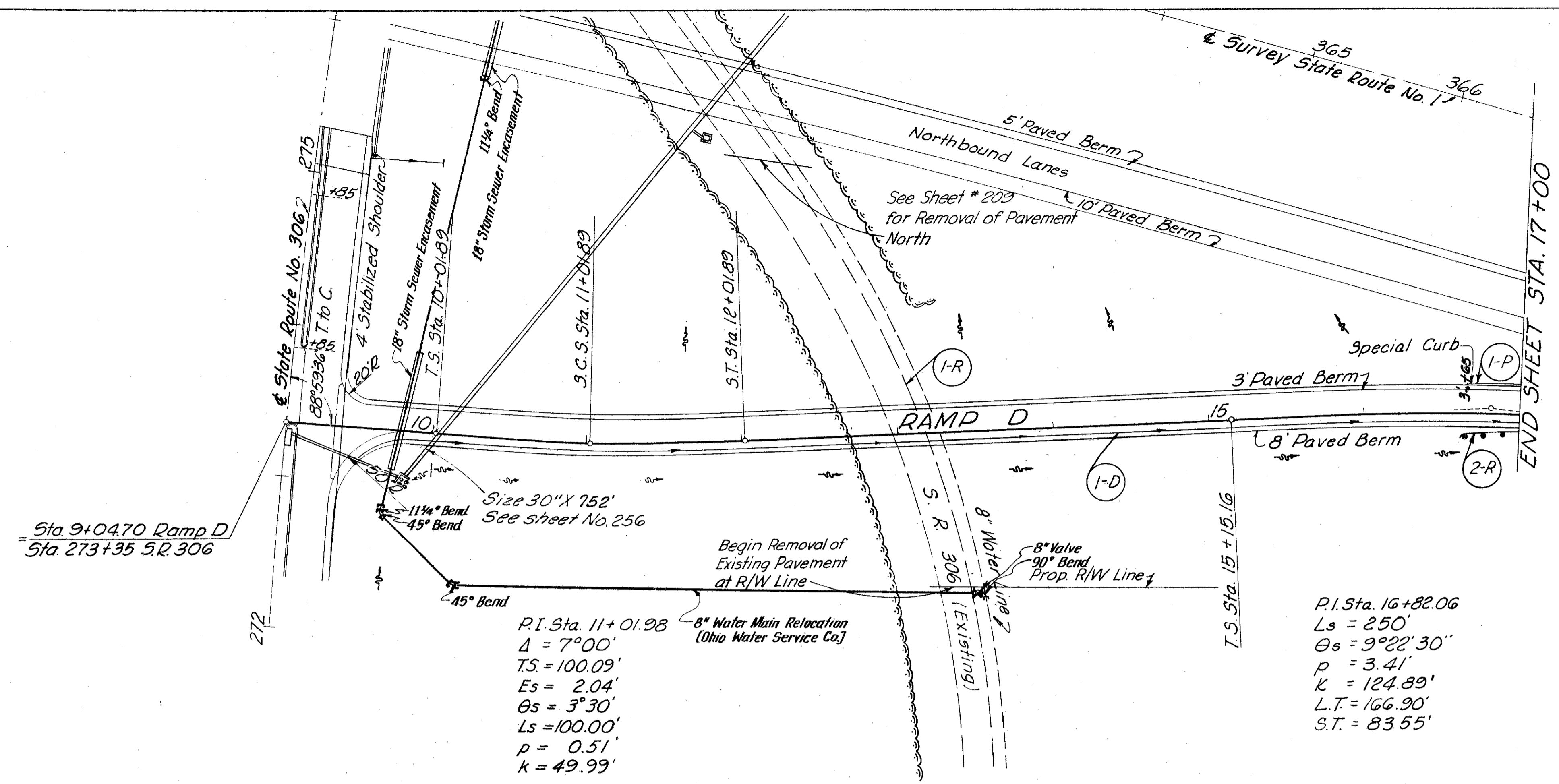


This sheet supersedes Sheet No. 201
Added 3-24-60 R.E.C.

LAKE COUNTY
LAK-I-4.02

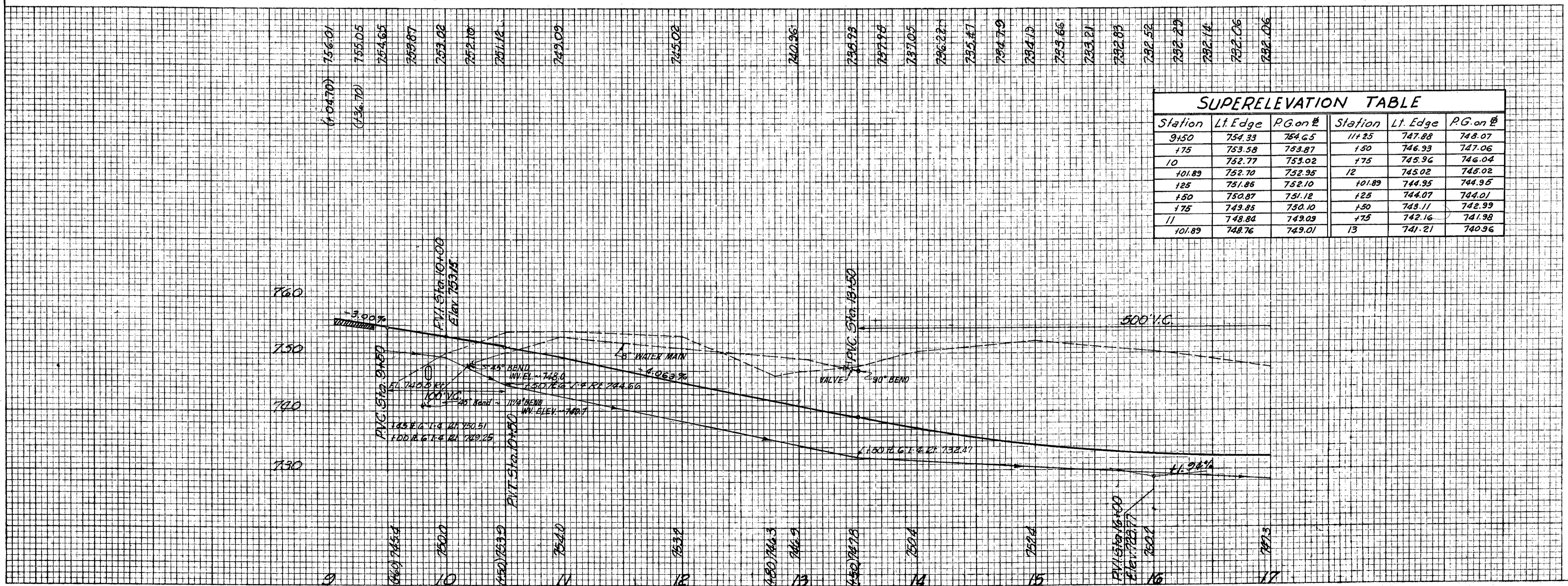


ITEM	QUANTITY	UNIT	DESCRIPTION	I-1103(20)	S-46(7)
I-124.03	2380	LIN. FT.	NEW WATER MAIN, 8"	890	1490
I-124.03	2	EACH	FITTINGS ~ 8" C.I. 11 1/4° BEND.	1	1
I-124.03	2	EACH	FITTINGS ~ 8" C.I. 22 1/2° BEND.		2
I-124.03	2	EACH	FITTINGS ~ 8" C.I. 45° BEND.		2
I-124.03	1	EACH	FITTINGS ~ 8" C.I. 90° BEND.		1
I-124.06	1	EACH	FIRE HYDRANTS REMOVED & RESET.		1
I-124.08	1	EACH	SERVICE STOPS & BOXES REMOVED & RESET.		1
I-2 *	552	LIN. FT.	18" STORM SEWERS UNDER PAVEMENT OR APPROACHES, SEC. M-6.5(b) OR SEC. M-6.8(b).	552	
I-124.03	1	EACH	FITTING - 8"x8"x6" TEE		1

* NOTE: 18" Pipe, includes concrete encasement. See note in proposal.

FINAL SURVEY
NO. 10

ORIGINAL SURVEY
NO. 10



Station	Lt. Edge	R.G. on #	Station	Lt. Edge	R.G. on #
9+50	754.33	764.65	11+25	747.88	748.07
175	753.58	753.87	150	746.93	747.06
10	752.77	753.02	175	745.96	746.04
101.89	752.70	752.95	12	745.02	745.02
125	751.85	752.10	101.89	744.95	744.95
150	750.87	751.12	125	744.07	744.07
175	749.85	750.10	150	743.11	743.99
11	748.84	749.09	175	742.16	741.98
101.89	748.76	749.01	13	741.21	740.96

See Sheet No.	Ref. No.	Station		Side & Underdrain	I-4	E-8	I-15	I-12
		From	To					
I-D		9+45	17+00	24"	755			
I-R		12+01	13+43	12"		689		
2-R		16+65	17+00	24"			35	
I-P		16+65	17+00	12"				35
Total					755	689	35	35

REVISIONS: 5-27-59 Water Main Relocated Sta. 9+75 to 13+50
3-18-60 Grade Raise for 16" Br. Cl.

MICHAEL BAKER JR., CONSULTING ENGINEERS
ROCHESTER, PENNSYLVANIA
STATE OF OHIO
DEPARTMENT OF HIGHWAYS
STATE HIGHWAY NO. 1
C-44
S.R. NO. 306 INTERCHANGE RAMP-D
STA. 9+00 TO STA. 17+00

Designed	Drawn	Traced	Checked	Reviewed	Date	Revised
H.V.	R.P.	A.H.	B.P.			

RAMP D STA. 9+00 TO STA. 17+00