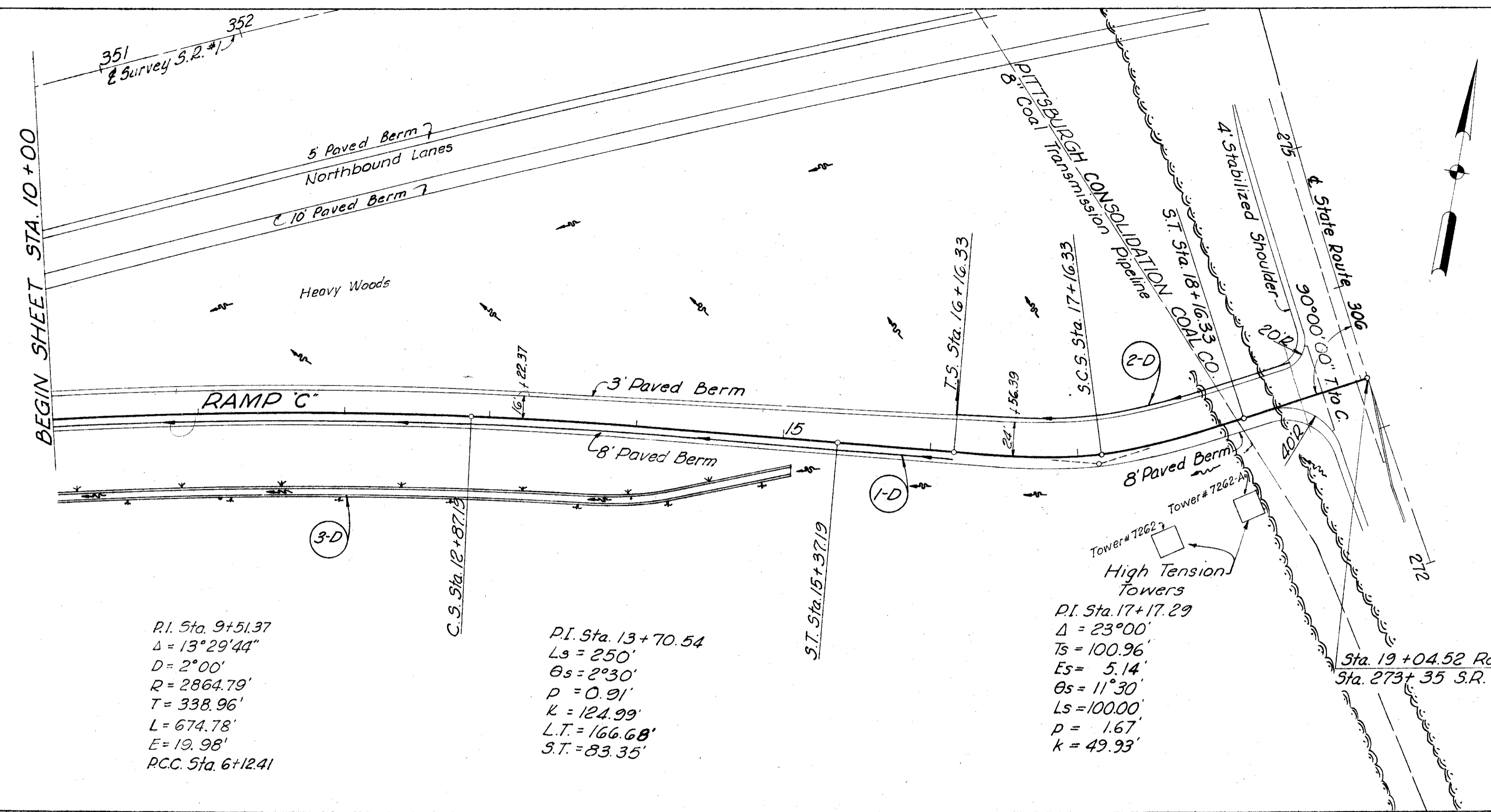


This sheet supersedes
 Sheet No. 195
 Added 3-24-60 R.E.C.

FED. RD. DIVISION	STATE	PROJECT
2	OHIO	I-1103(20) S-46(7)

LAKE COUNTY
 LAK-1-4.02

1953
 333



PI. Sta. 9+51.37
 $\Delta = 13^\circ 29' 44''$
 $D = 2^\circ 00'$
 $R = 2864.79'$
 $T = 338.96'$
 $L = 674.78'$
 $E = 19.98'$
 R.C.C. Sta. 6+12.41

PI. Sta. 13+70.54
 $L_s = 250'$
 $T_s = 100.96'$
 $E_s = 5.14'$
 $\theta_s = 11^\circ 30'$
 $L_s = 100.00'$
 $p = 1.67'$
 $k = 49.93'$

PI. Sta. 17+17.29
 $\Delta = 23^\circ 00'$
 $T_s = 100.96'$
 $E_s = 5.14'$
 $\theta_s = 11^\circ 30'$
 $L_s = 100.00'$
 $p = 1.67'$
 $k = 49.93'$

Sta. 19+04.52 Ramp "C"
 Sta. 273+35 S.R. 306

DATE	BY
DATE	BY

DATE	BY
DATE	BY

Station	Lt. Edge	Rt. on E	Station	Lt. edge	Rt. on E
12+87.19	739.25	739.00	15+75	750.40	750.26
13+00	739.73	739.48	16+00	751.30	751.24
+25	740.71	740.46	16+16.33	751.88	751.88
+50	741.69	741.44	+25	752.19	752.22
+75	742.67	742.42	+50	753.04	753.16
14+00	743.66	743.40	+75	753.78	754.01
+25	744.65	744.38	17+00	754.46	754.78
+50	745.64	745.36	+25	754.85	755.23
+75	746.63	746.34	+50	755.08	755.46
15+00	747.62	747.32	+75	755.68	756.06
+25	748.59	748.30	+50	756.20	756.58
+75	749.04	748.78	18+00	756.63	757.01
+50	749.50	749.28	+25	756.87	757.25

See Ref. Sh. No.	Station	From To	Lin. Ft.	Each Lin. Ft. 50 lbs. Cu. Yds.	Drainage Structures No. 2 Rqgr.
	10+00	16+16	616	1	0.30
	16+16	18+70	254	1	0.30
	18+70	19+00	130	1	0.30
	19+00	19+00	0	1	0.30
			883	1	0.30

REVISIONS:
 3-18-60 Grade Raise for 16'-4" Br. Cl.

MICHAEL BAKER JR., CONSULTING ENGINEERS
 ROCHESTER, PENNSYLVANIA

STATE OF OHIO
 DEPARTMENT OF HIGHWAYS
 STATE HIGHWAY NO. 1
 C-44
 S.R. NO. 306 INTERCHANGE RAMP-C
 STA. 10+00 TO STA. 19+00

Designed	Drawn	Traced	Checked	Reviewed	Date	Revised
H.V.	R.P.	A.H.	B.P.			