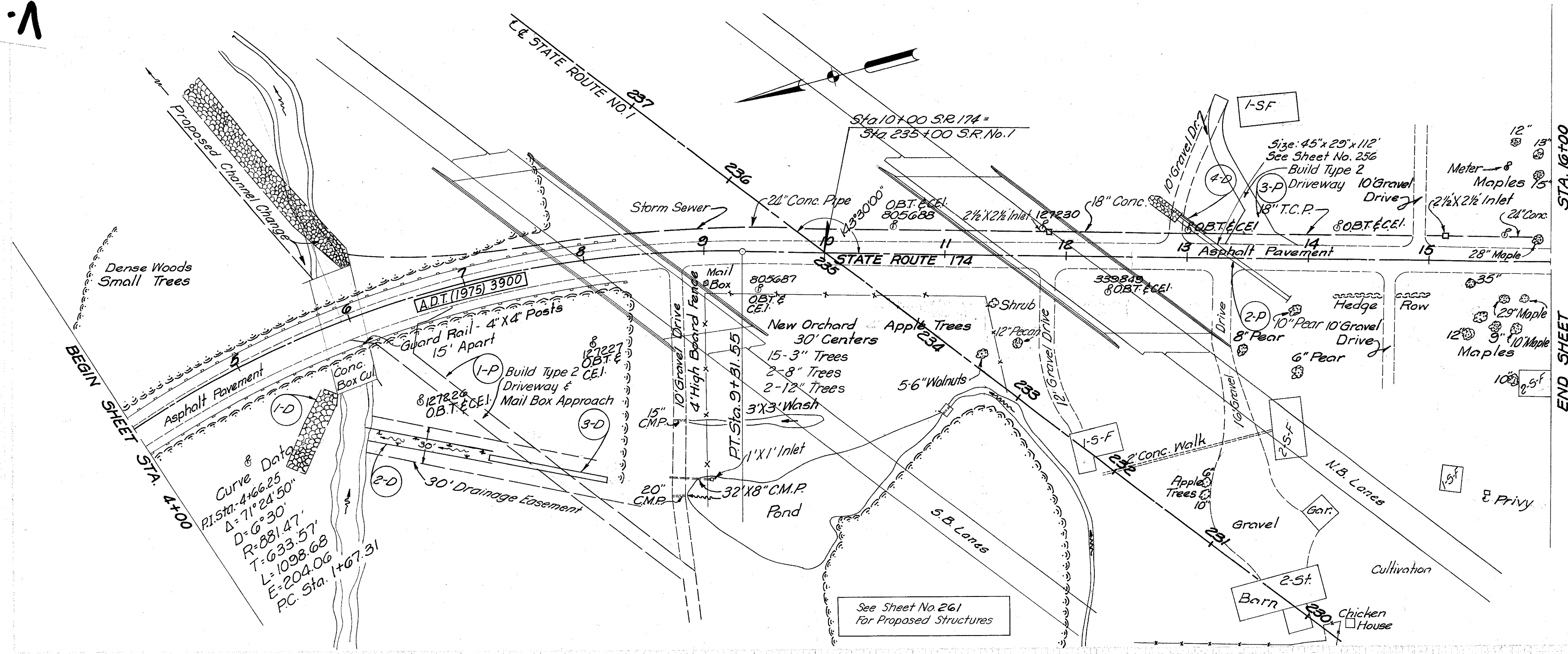
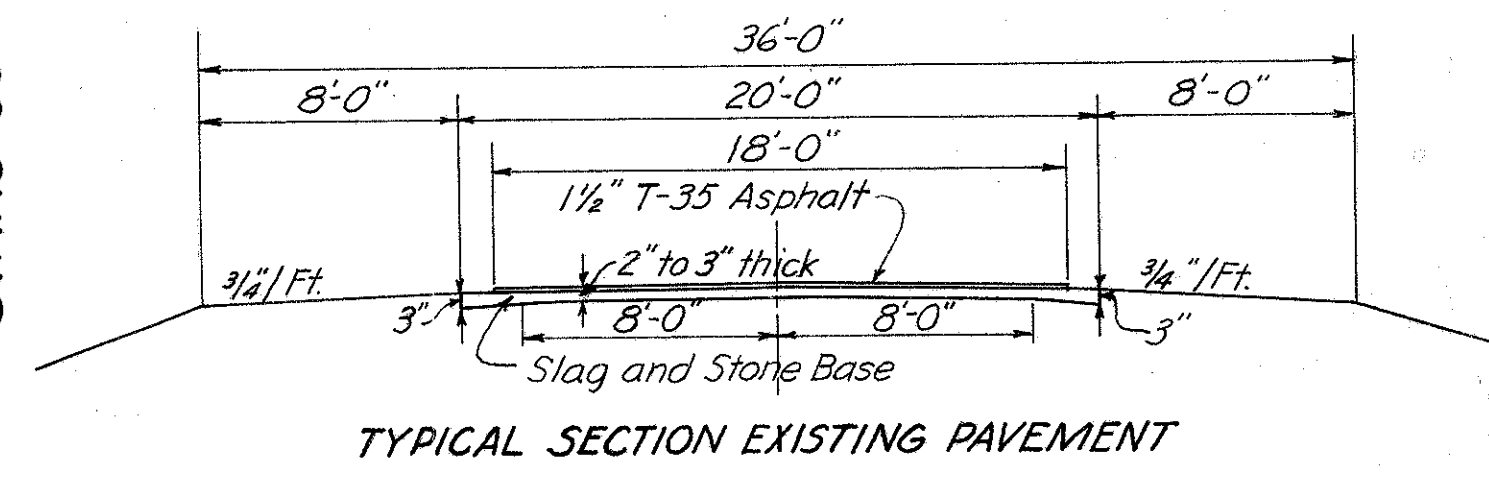


S-1

LAK-90-4.98-7.935

FED. RD. DIVISION	STATE	PROJECT
2	OHIO	I-1103 (20) S-46 (7)

LAKE COUNTY  
LAK-1-4.02

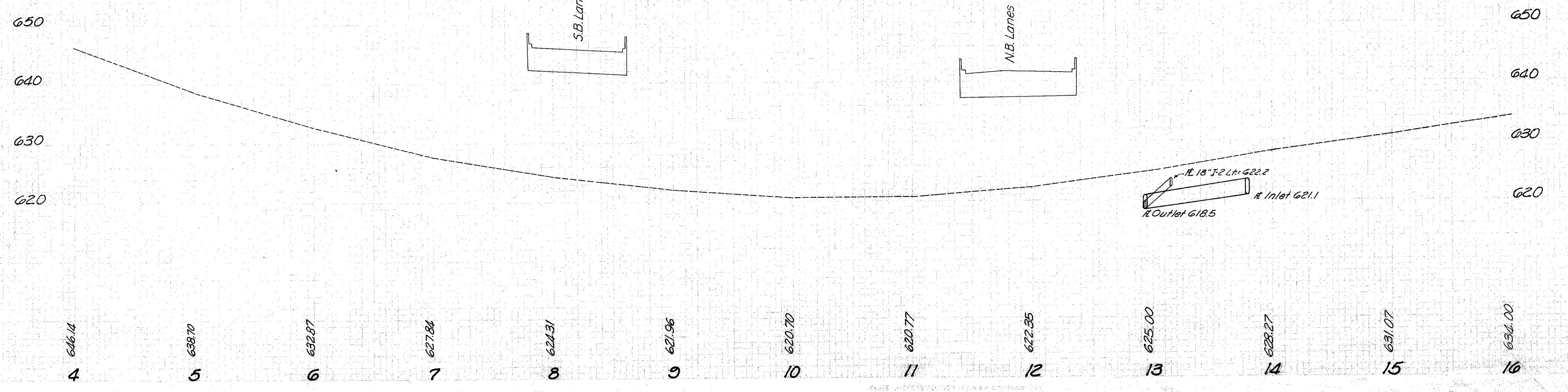


Curve & Data  
 P.I. Sta. 4+66.25  
 Δ = 71° 24' 50"  
 R = 881.47'  
 T = 633.57'  
 L = 1098.68'  
 E = 204.06'  
 P.C. Sta. 1+67.31

See Sheet No. 261  
 for Proposed Structures

Ref. No.	Station		Side Removal of Exist. Pav't. Sq. Yds.	E-8 8" Water and Macadam Base Sq. Yds.	B-20 Bituminous Prime Coat Gals.	T-35 1 1/2" Asphaltic Conc. Surf. Course Cu. Yds.	B-19 Aggregate Base Course Cu. Yds.
	From	To					
1-P	6+30	7+00					
2-P	13+36	14+00	24.56	24.56	8.60	1.02	
3-P	13+75	14+00					1.19
Totals			24.56	24.56	8.60	1.02	1.19

Station	Side	Pipe for Driveways		Storm Sewer	Class "A" 18" 1.55 Band	Class "B" 5.5	Dumped Rock Channel Protection	Sq. Yds.
		Lin. Ft.	Each Cu. Yds.					
L-10	Sodding							111
L-10		60"	100				163	
L-5								
L-2				18"				24
F-1								100
Total								111



MICHAEL BAKER JR., CONSULTING ENGINEERS  
 ROCHESTER, PENNSYLVANIA

STATE OF OHIO  
 DEPARTMENT OF HIGHWAYS  
 STATE HIGHWAY NO. 1  
 C-44  
 S.R. 174 PLAN AND PROFILE  
 STA. 4+00 TO STA. 16+00

Designed	Drawn	Traced	Checked	Reviewed Date	Revised
R.G.	K.A.	K.A.	E.H.		

STATE ROUTE 174 STA. 4+00 TO STA. 16+00