

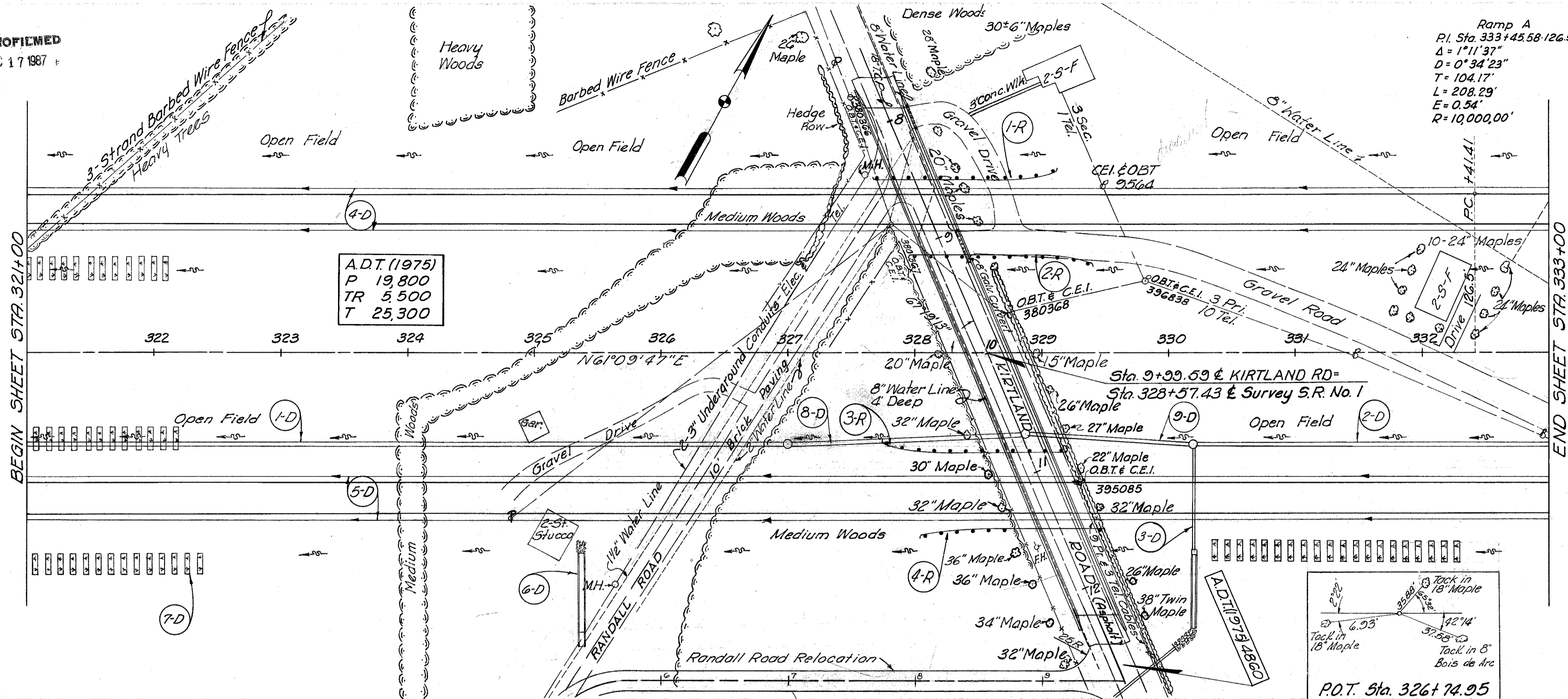
MICROFILMED  
DEC 17 1987

FED. RD. DIVISION	STATE	PROJECT
2	OHIO	I-1103 (20) S-46 (7)

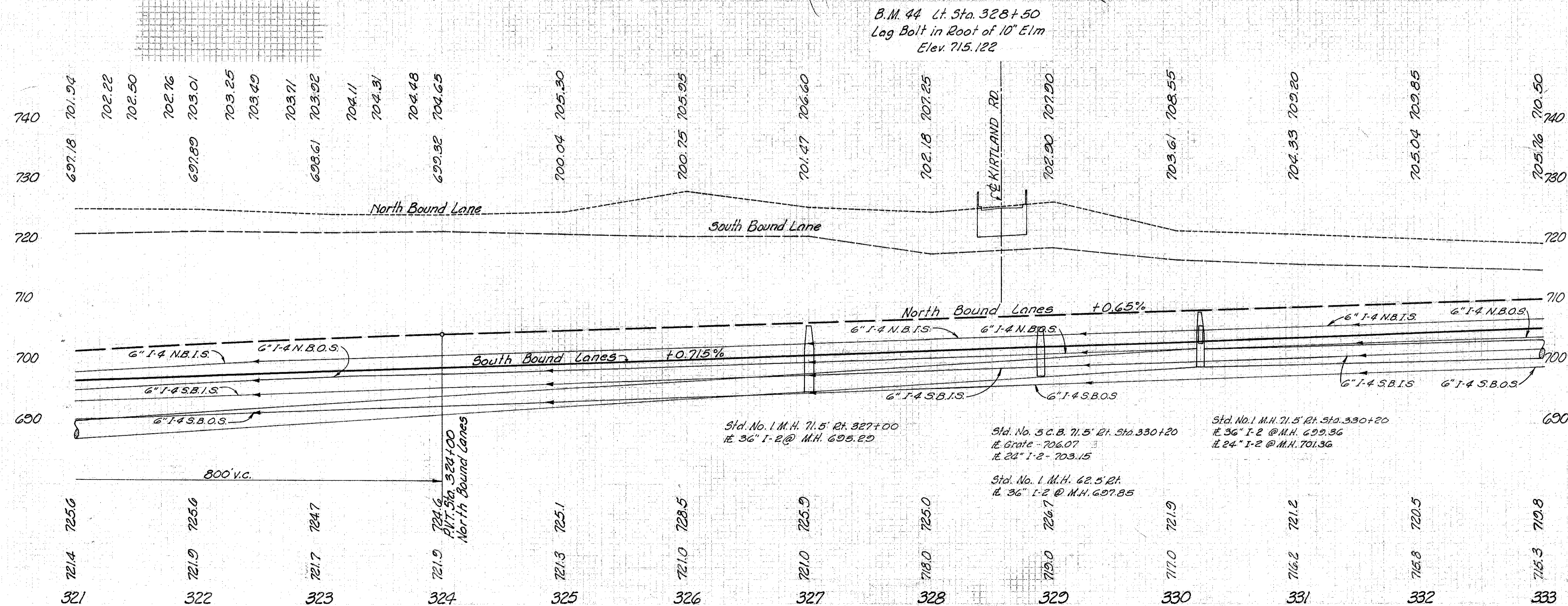
26  
333

LAKE COUNTY  
LAK-1-4.02

Ramp A  
P.I. Sta. 333+45.58 126.5' Lt.  
 $\Delta = 1^{\circ}11'37''$   
 $D = 0^{\circ}34'23''$   
 $T = 104.17'$   
 $L = 208.29'$   
 $E = 0.54'$   
 $R = 10,000.00'$



ROADWAY				
Ref. No.	Station		Side &	I-15 Guard Rail Dwg. No. 2-A Lin. Ft.
	From	To		
1-R	327+70	329+07.50	Lt.	137.50
2-R	328+00	329+37.50	Lt.	137.50
3-R	327+77.50	329+15	Rt.	137.50
4-R	328+07.50	329+45	Rt.	137.50
Totals				550



See Sh. No.	Ref. No.	Station	Side &	DRAINAGE		Lin. Ft.	Sp. Yds.
				I-2	I-10		
147	I-0	321+00	Rt.	24"	36"	528	76
147	I-0	330+20	Rt.	24"	36"	278	99
249	I-0	330+20	Rt.	24"	36"	82	82
144	I-0	321+00	Rt.	24"	36"	1200	82
144	I-0	325+55	Rt.	24"	36"	1200	82
144	I-0	321+00	Rt.	24"	36"	1200	82
144	I-0	327+00	Rt.	24"	36"	1200	82
144	I-0	328+85	Rt.	24"	36"	1200	82
144	I-0	328+85	Rt.	24"	36"	1200	82
				1212	1212	5917	28

MICHAEL BAKER, JR., CONSULTING ENGINEERS  
ROCHESTER, PENNSYLVANIA

STATE OF OHIO  
DEPARTMENT OF HIGHWAYS  
STATE HIGHWAY NO. 1  
C-44  
PLAN AND PROFILE  
STA. 321+00 TO STA. 333+00

Designed	Drawn	Traced	Checked	Reviewed	Date	Revised
B.P.	R.P.	K.A.	E.H.			

PLAN & PROFILE STA. 321+00 - STA. 333+00