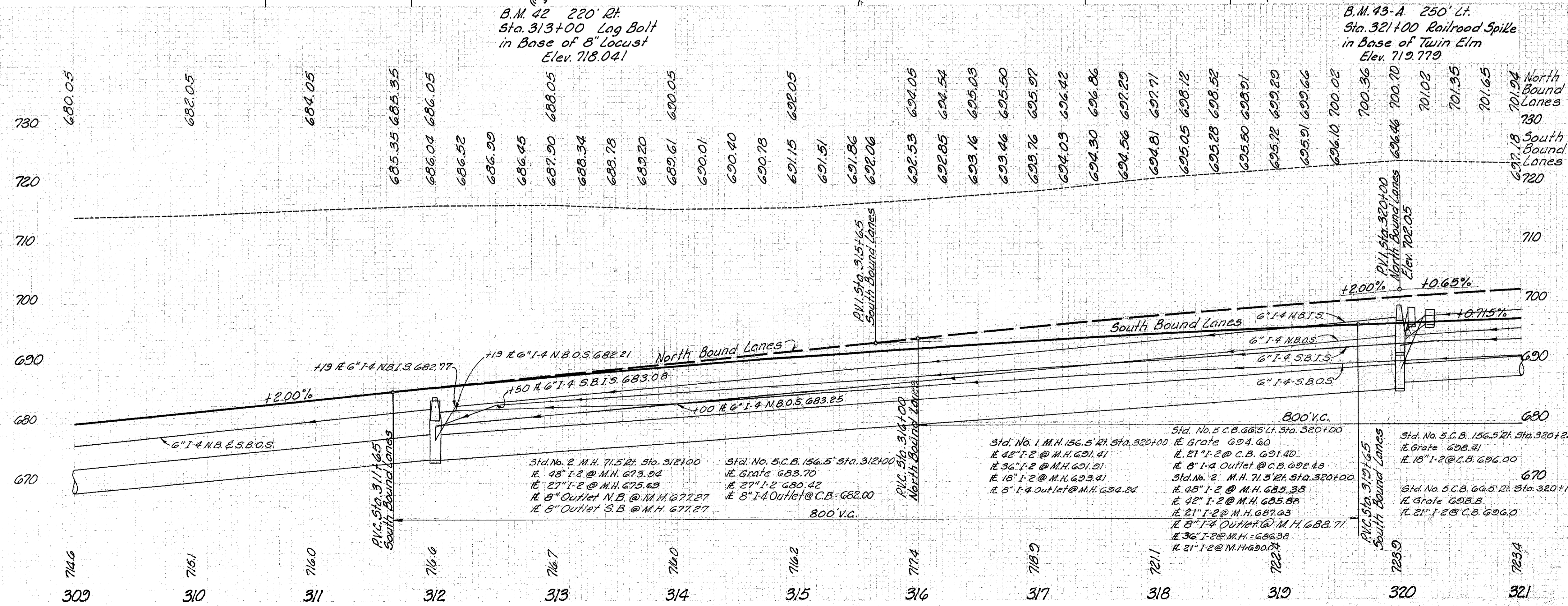
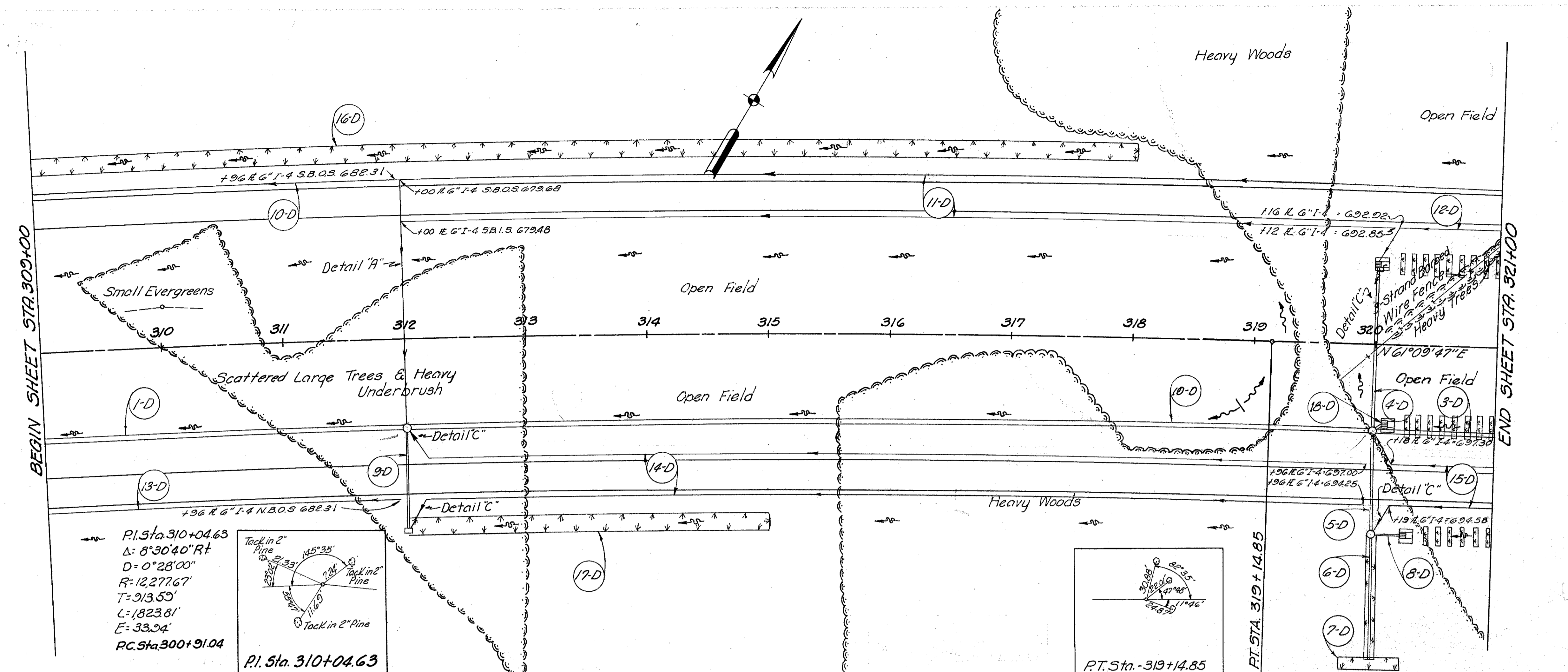


LAKE COUNTY  
LAK-1-4.02

Sta. No.	Structure	Description	Type	Material	Quantity		Notes
					Units	Value	
1-2	Storm Sewer	Underdrain	Shallow	6" M.G. (4) Shallow	1797	400	
1-2	Storm Sewer	Underdrain	Shallow	6" M.G. (4) Shallow	1797	400	
1-2	Storm Sewer	Underdrain	Shallow	6" M.G. (4) Shallow	1797	400	
1-2	Storm Sewer	Underdrain	Shallow	6" M.G. (4) Shallow	1797	400	
1-2	Storm Sewer	Underdrain	Shallow	6" M.G. (4) Shallow	1797	400	
1-2	Storm Sewer	Underdrain	Shallow	6" M.G. (4) Shallow	1797	400	
1-2	Storm Sewer	Underdrain	Shallow	6" M.G. (4) Shallow	1797	400	
1-2	Storm Sewer	Underdrain	Shallow	6" M.G. (4) Shallow	1797	400	
1-2	Storm Sewer	Underdrain	Shallow	6" M.G. (4) Shallow	1797	400	
1-2	Storm Sewer	Underdrain	Shallow	6" M.G. (4) Shallow	1797	400	
1-2	Storm Sewer	Underdrain	Shallow	6" M.G. (4) Shallow	1797	400	
1-2	Storm Sewer	Underdrain	Shallow	6" M.G. (4) Shallow	1797	400	



MICHAEL BAKER, JR., CONSULTING ENGINEERS  
 ROCHESTER, PENNSYLVANIA  
**STATE OF OHIO**  
**DEPARTMENT OF HIGHWAYS**  
**STATE HIGHWAY NO. 1**  
**C-44**  
**PLAN AND PROFILE**  
**STA. 309+00 TO STA. 321+00**

Designed	Drawn	Traced	Checked	Reviewed Date	Revised
R.G.	R.P.	K.A.	B.P.		