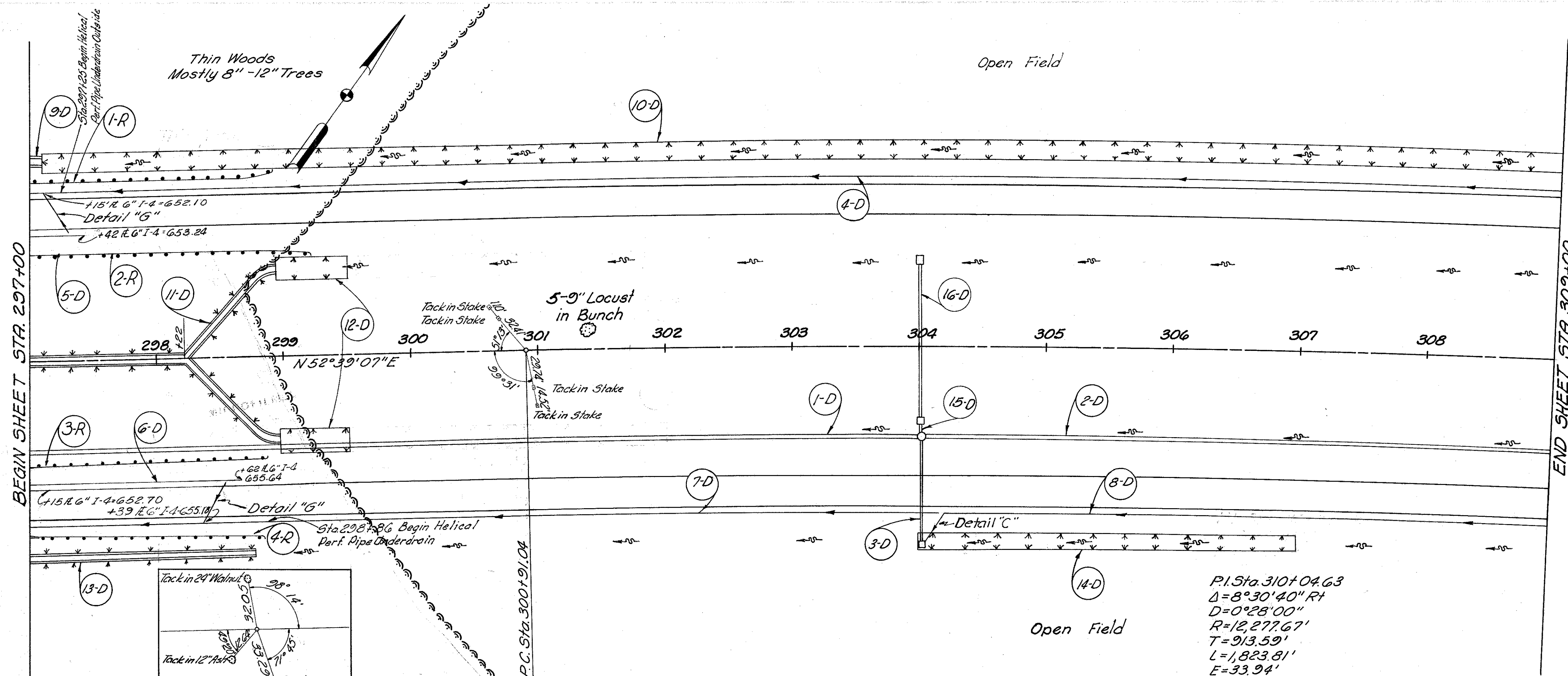
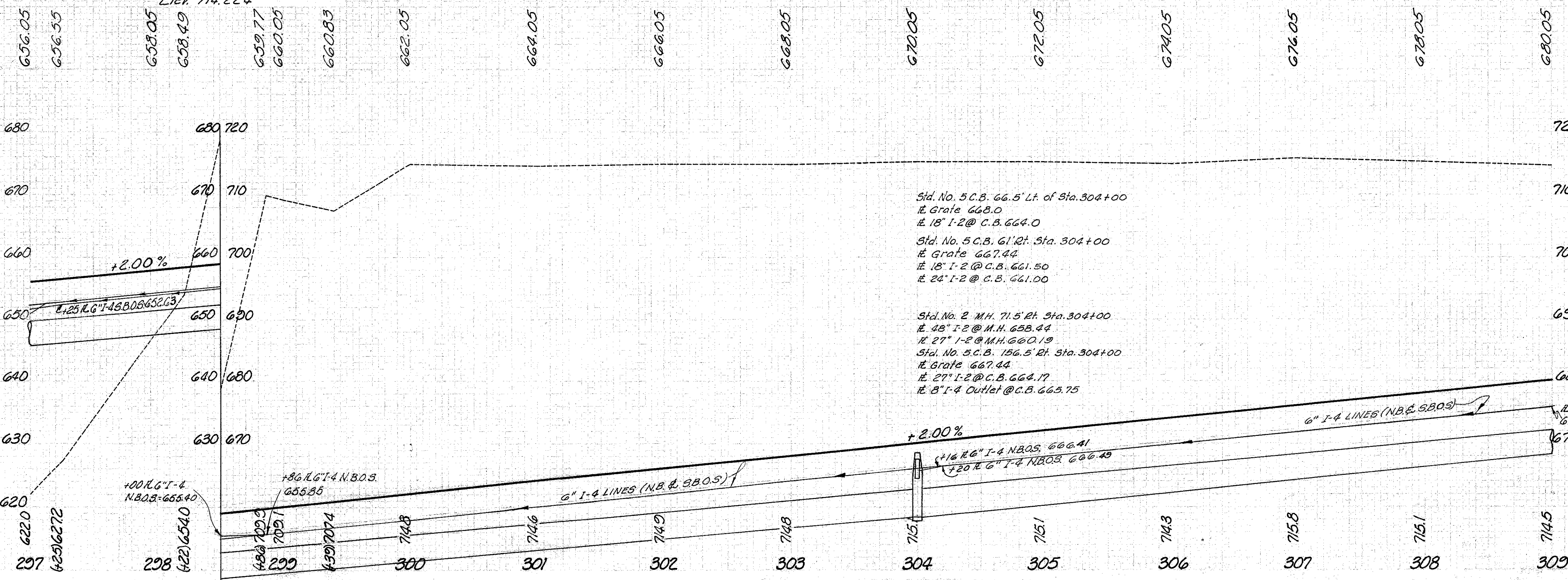


LAKE COUNTY
LAK-1-4.02



ROADWAY				
Ref. No.	Station		Side &	I-15 Guard Rail Dwg. No. 2A Lin. Ft.
	From	To		
1-R	297+00	298+91.45	Lt.	191.45
2-R	297+00	299+19.52	Lt.	219.52
3-R	297+00	298+81.55	Rt.	181.55
4-R	297+03.37	298+78.37	Rt.	175.00
Totals				768

Sec. Sh. No.	See Ref. No.	Station		Side &	Description	Lin. Ft.	Each	Totals										
		From	To															
128	1-D	296+98	303+97	Rt.	18" Storm Sewer Under Pavil or App.	689	18"	689										
129	2-D	304+08	305+00	Rt.	18" Storm Sewer Under Pavil or App.	92	18"	92										
130	3-D	304+00	305+00	Rt.	18" Storm Sewer Under Pavil or App.	100	18"	100										
131	4-D	297+00	297+42	Lt.	18" Storm Sewer Under Pavil or App.	42	18"	42										
132	5-D	297+00	298+62	Rt.	18" Storm Sewer Under Pavil or App.	62	18"	62										
133	6-D	297+00	304+14	Rt.	18" Storm Sewer Under Pavil or App.	304	18"	304										
134	7-D	297+00	309+00	Rt.	18" Storm Sewer Under Pavil or App.	309	18"	309										
135	8-D	297+00	297+10	Lt.	18" Storm Sewer Under Pavil or App.	10	18"	10										
136	9-D	297+00	298+00	Lt.	18" Storm Sewer Under Pavil or App.	100	18"	100										
137	10-D	297+00	298+50	Rt.	18" Storm Sewer Under Pavil or App.	50	18"	50										
138	11-D	297+00	298+76	Rt.	18" Storm Sewer Under Pavil or App.	76	18"	76										
139	12-D	304+00	307+00	Rt.	18" Storm Sewer Under Pavil or App.	307	18"	307										
140	13-D	304+00	304+00	Rt.	18" Storm Sewer Under Pavil or App.	0	18"	0										
141	14-D	304+00	304+00	Rt.	18" Storm Sewer Under Pavil or App.	0	18"	0										
142	15-D	304+00	304+00	Rt.	18" Storm Sewer Under Pavil or App.	0	18"	0										
143	16-D	304+00	304+00	Rt.	18" Storm Sewer Under Pavil or App.	0	18"	0										
Totals						1,198	82	475	2,228	10	1	2	1	3	508	2,763	126	8



MICHAEL BAKER, JR., CONSULTING ENGINEERS
ROCHESTER, PENNSYLVANIA

STATE OF OHIO
DEPARTMENT OF HIGHWAYS
STATE HIGHWAY NO. 1
C-44
PLAN AND PROFILE
STA. 297+00 TO STA. 309+00

Designed	Drawn	Traced	Checked	Reviewed	Date	Revised
T.L.	L.W.	K.A.	B.P.			

PLAN & PROFILE STA. 297+00 - STA. 309+00