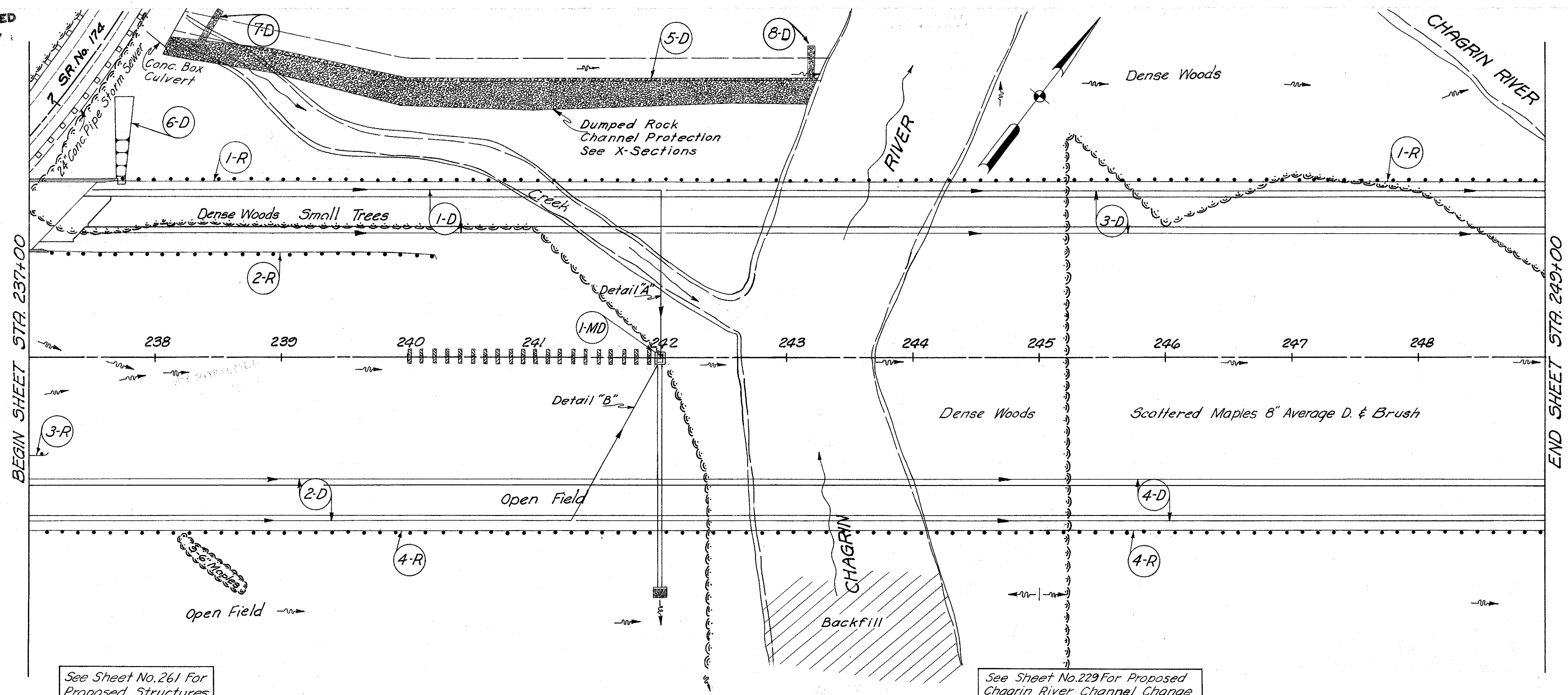
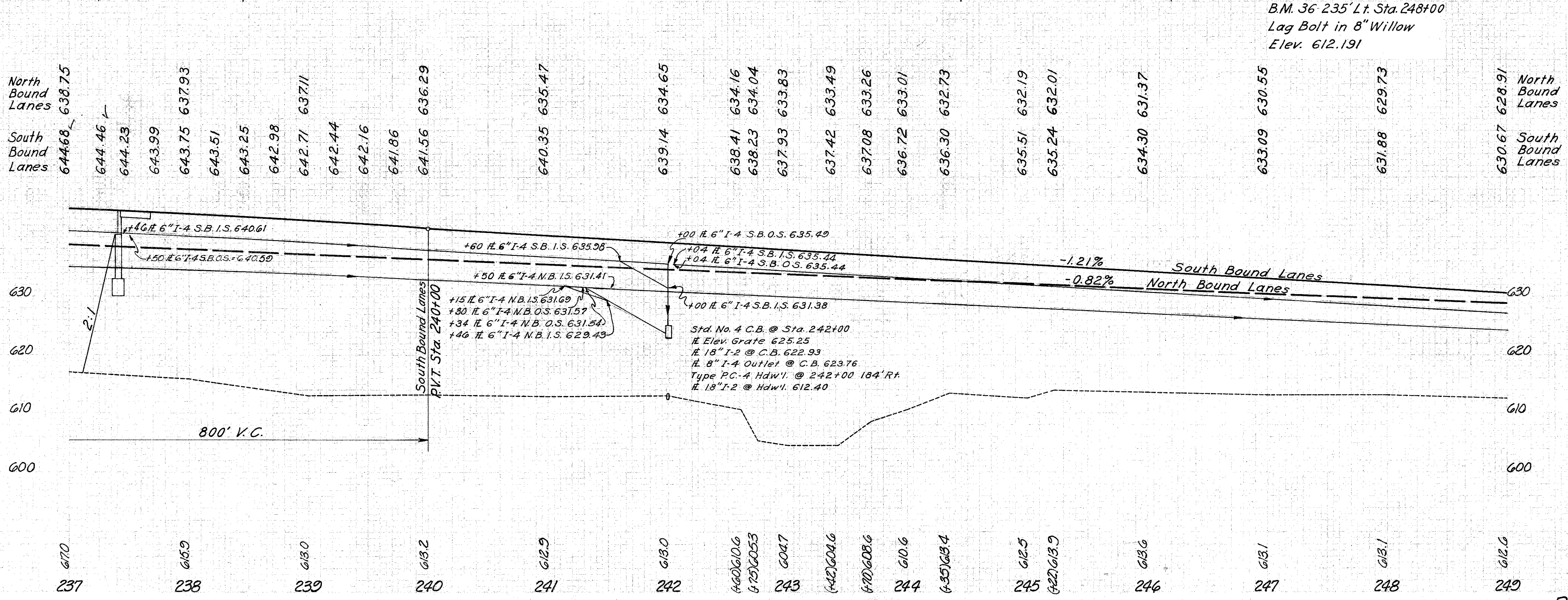


ROADWAY				
Ref. No.	Station		Side &	I-15 Guard Rail Dwg. No. 2-A Lin. Ft.
	From	To		
1-R	237+66.97	249+00	Lt.	1133.03
2-R	237+12.97	240+19.22	Lt.	306.25
3-R	237+00	237+10.16	Rt.	10.16
4-R	237+00	249+00	Rt.	1200.00
Totals				2,649



See Sheet No. 261 For Proposed Structures

See Sheet No. 229 For Proposed Chagrin River Channel Change



Ref. No.	Station	Side &	Structure		I-15 Guard Rail Dwg. No. 2-A Lin. Ft.
			From	To	
I-2	237+00	Lt.	237+00	237+10	10.16
I-4	237+00	Rt.	237+00	249+00	1200.00
I-5	237+00	Lt.	237+00	249+00	1133.03
I-10	237+00	Lt.	237+00	249+00	306.25
I-10	237+00	Rt.	237+00	249+00	1200.00
Totals					2,649

MICHAEL BAKER, JR., CONSULTING ENGINEERS
ROCHESTER, PENNSYLVANIA

STATE OF OHIO
DEPARTMENT OF HIGHWAYS
STATE HIGHWAY NO. 1
C-44
PLAN AND PROFILE
STA. 237+00 TO STA. 249+00

Designed	Drawn	Traced	Checked	Reviewed	Date	Revised
R.G.	K.A.	A.H.	E.H.			

PLAN & PROFILE STA. 237+00 - STA. 249+00