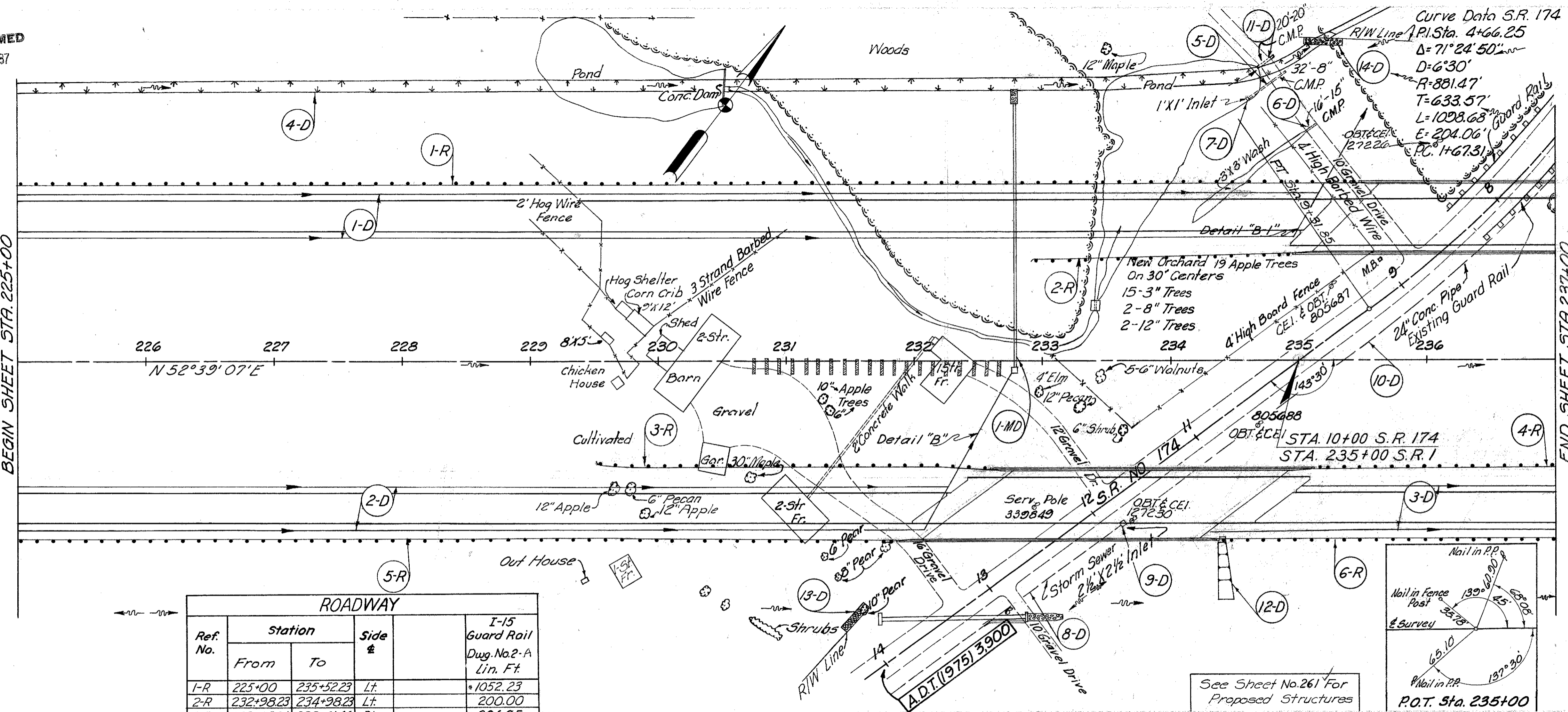


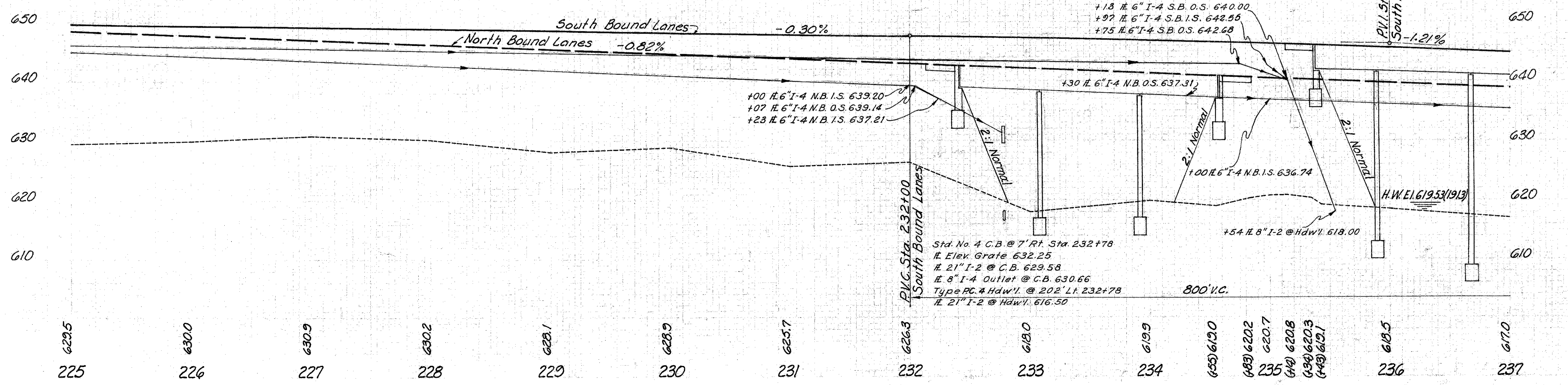
BEGIN SHEET STA. 225+00

END SHEET STA. 237+00



Ref. No.	Station		Side #	I-15 Guard Rail Dwg. No. 2-A Lin. Ft.
	From	To		
1-R	225+00	235+52.23	Lt.	1052.23
2-R	232+98.23	234+98.23	Lt.	200.00
3-R	229+55.21	232+61.46	Rt.	306.25
4-R	235+10.16	237+00	Rt.	189.84
5-R	225+00	231+88.48	Rt.	688.48
6-R	234+37.18	237+00	Rt.	262.82
Totals				2700

680 North Bound Lanes	649.70	648.59
670 South Bound Lanes	649.40	647.77
660	649.10	646.95
	648.80	646.13
	648.50	645.31
	648.20	644.49
	647.90	643.67
	647.60	642.85
	647.33	
	647.04	
	646.75	
	646.47	640.80
	646.20	640.53
	646.10	640.39
	646.10	640.28
	645.02	640.11
	645.85	640.04
	645.68	
	645.30	
	645.10	
	644.90	
660 South Bound Lanes	644.68	638.75



See Sh. No.	Ref. No.	Station	From	To	Side #	Description		Lin. Ft.	Elev.	Notes	
						Structure	Material				
38	1-MD	232+78			Rt.	Class R Storm	Under	21"	208		
240	1-D	225+10	235+15		Lt.	Class R Storm	Under	18"	235		
240	2-D	229+50	232+52		Rt.	Class R Storm	Under	18"	232		
3-D	3-D	234+30	237+00		Rt.	Class R Storm	Under	18"	237		
5-D	5-D	225+00	231+25		Lt.	Class R Storm	Under	18"	231		
6-D	6-D	235+70	237+00		Lt.	Class R Storm	Under	18"	237		
7-D	7-D	234+62	237+00		Lt.	Class R Storm	Under	18"	237		
8-D	8-D	233+00	237+00		Rt.	Class R Storm	Under	18"	237		
9-D	9-D	235+82	237+00		Lt.	Class R Storm	Under	18"	237		
10-D	10-D	234+80	237+00		Lt.	Class R Storm	Under	18"	237		
11-D	11-D	234+44	237+00		Rt.	Class R Storm	Under	18"	237		
12-D	12-D	231+52	237+00		Rt.	Class R Storm	Under	18"	237		
13-D	13-D	235+18	237+00		Lt.	Class R Storm	Under	18"	237		
Total									48	583	

MICHAEL BAKER, JR., CONSULTING ENGINEERS
ROCHESTER, PENNSYLVANIA

STATE OF OHIO
DEPARTMENT OF HIGHWAYS
STATE HIGHWAY NO. 1
C-44
PLAN AND PROFILE
STA. 225+00 TO STA. 237+00

Designed	Drawn	Traced	Checked	Reviewed	Date	Revised
R.G.	K.A.	K.A.	E.H.			