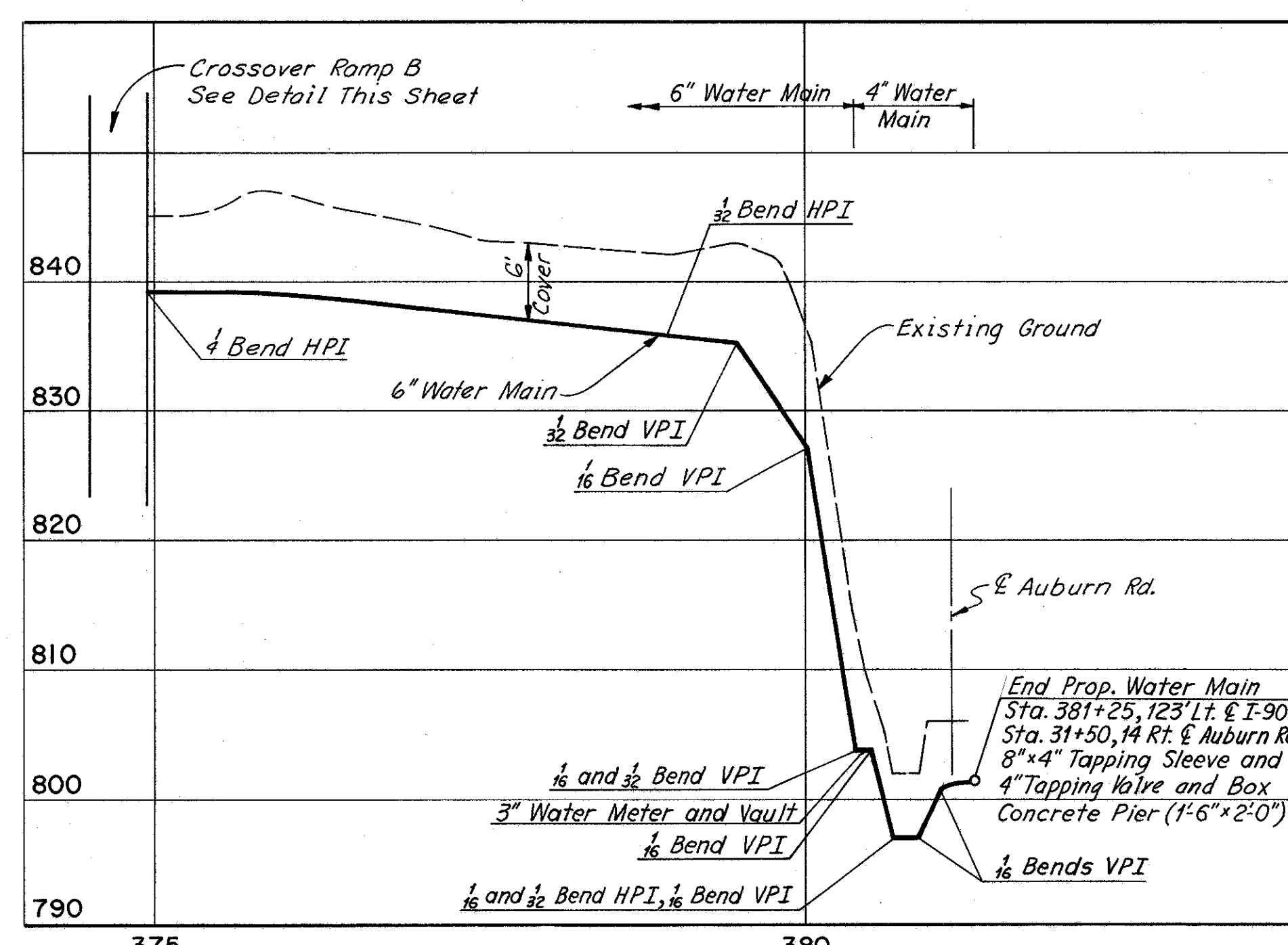
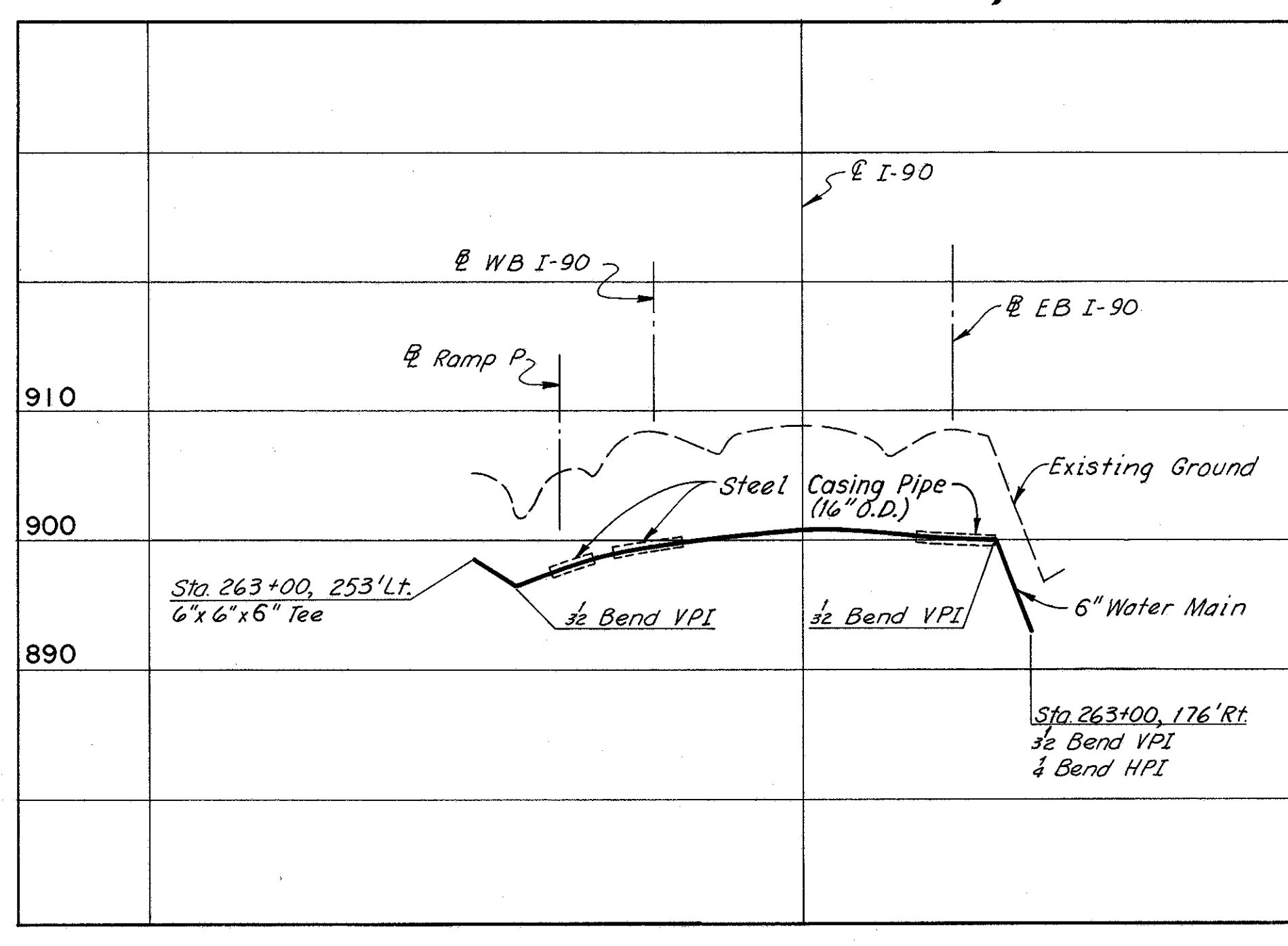


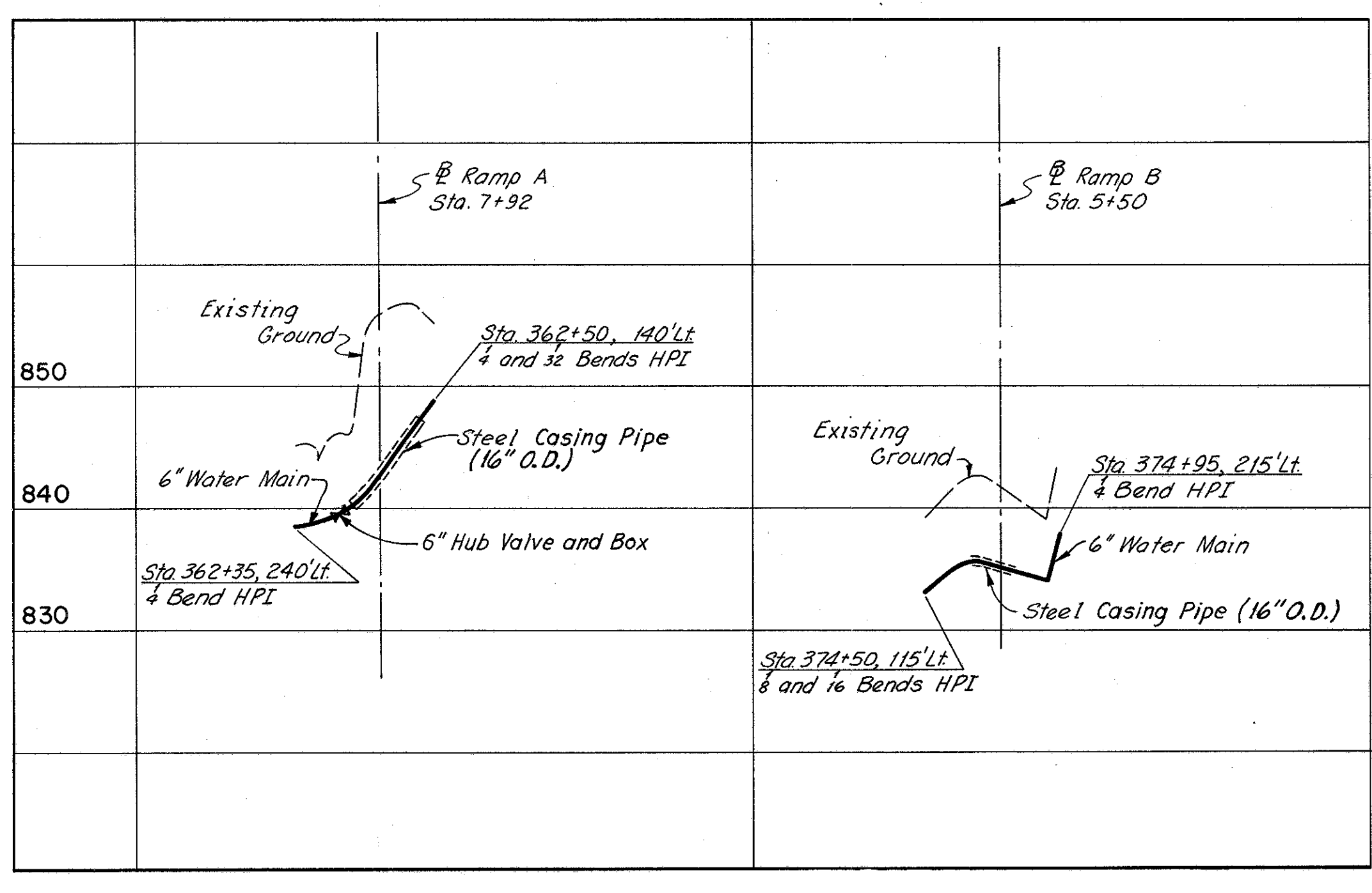
6" WATER MAIN STA.345+00 TO STA.374+50 NORTH SIDE I-90  
(See Sheet 17 for Water Main Location)



4" and 6" WATER MAIN STA. 374+95 TO STA. 381+25 NORTH SIDE I-90  
(See Sheet 18 for Water Main Location)



6" WATER MAIN UNDER I-90 AT STA. 263+00  
(See Sheet 16 for Water Main Location)



6" WATER MAIN UNDER RAMP A  
(See Sheet 17 for Water Main Location)

6" WATER MAIN UNDER RAMP B  
(See Sheet 18 for Water Main Location)

VERT. 1"=10'  
SCALE HOR. 1"=100'  
MADE E.R.H. DATE 2-21-73  
TRCD J.M.C. DATE 2-26-73  
CKD E.R.H. DATE 6-21-73  
**HOWARD, NEEDLES, TAMMEN & BERGENDOFF**  
CONSULTING ENGINEERS  
KANSAS CITY CLEVELAND NEW YORK

Note:  
1. The normal cover over the water pipe shall be six (6) feet; the minimum cover shall be five (5) feet and the maximum cover eight (8) feet.