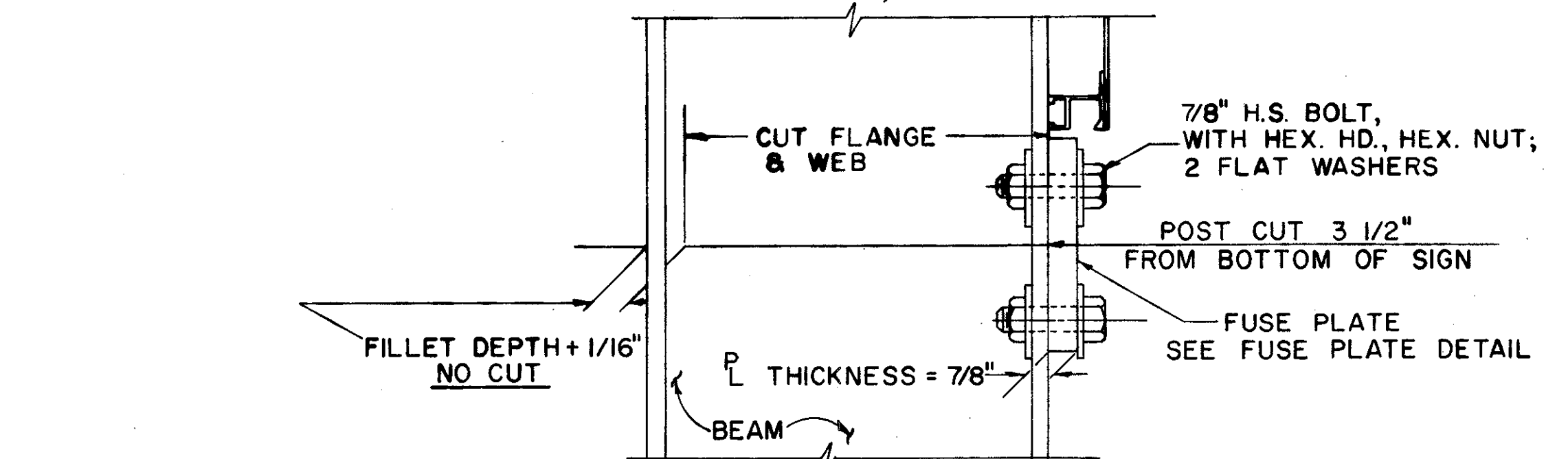


BOLTING PROCEDURE

1. ASSEMBLE POST TO STUB W/BOLTS & ONE FLAT WASHER ON EACH BOLT BETWEEN PLATES.
2. TIGHTEN ALL BOLTS THE MAXIMUM POSSIBLE W/12" TO 15" WRENCH TO BED & TO CLEAN BOLT THREADS. LOOSEN EACH BOLT IN TURN & RETIGHTEN BOLTS IN A SYSTEMATIC ORDER TO THE PRESCRIBED TORQUE OF 750 IN. LBS.
3. BURR THREADS AT JUNCTION W/NUT USING A CENTER PUNCH TO PREVENT NUT LOOSENING.

NOTE: TIGHTEN THE H.S. BOLTS IN THE BASE CONNECTION ONLY TO GIVEN TORQUE DO NOT OVER TIGHTEN

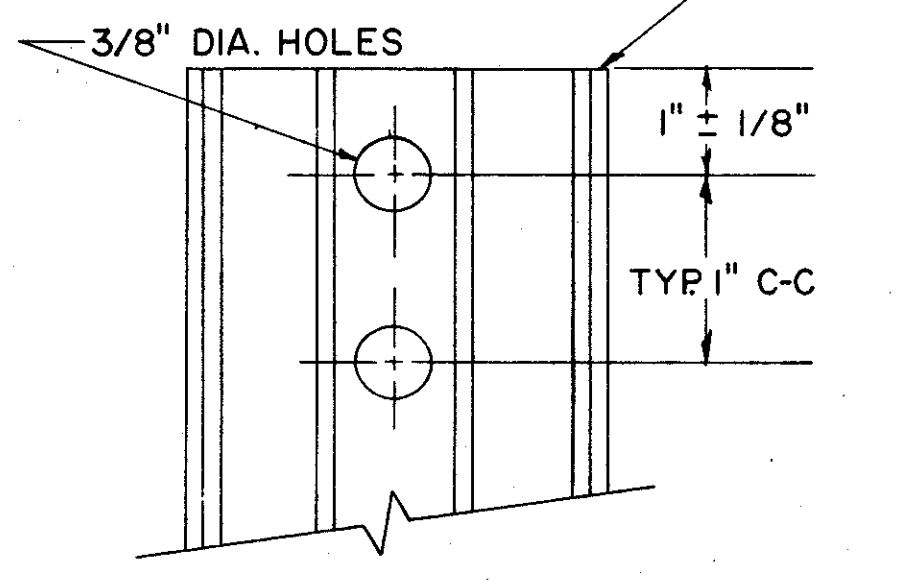
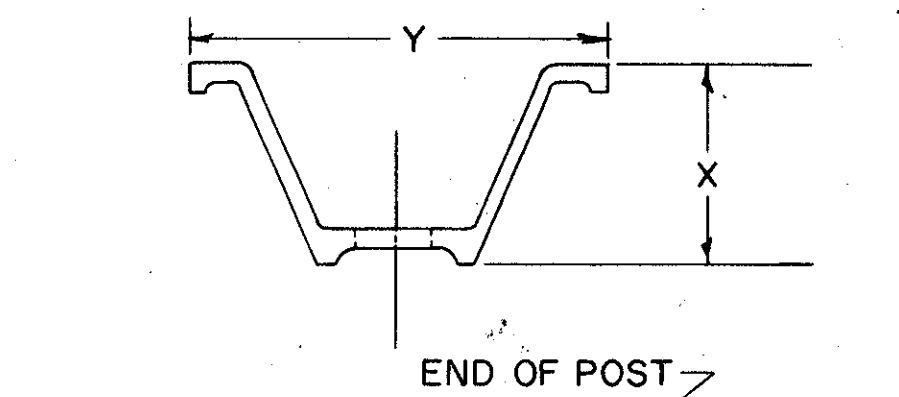
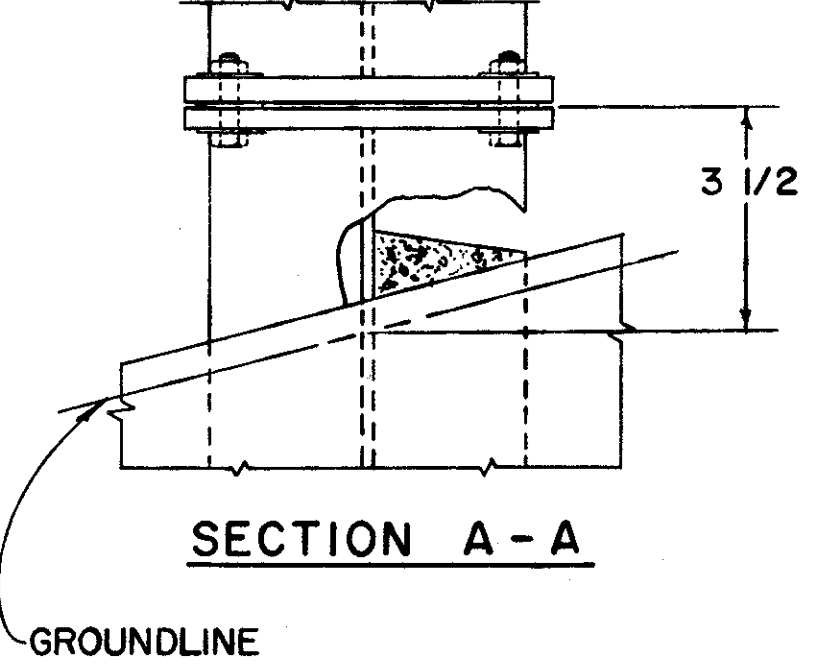
VIEW "A" ROTATED 180°



FABRICATOR NOTE: ALL FRICTION FUSE BOLTS SHALL BE TIGHTENED IN THE SHOP FOLLOWING A METHOD APPROVED BY THE ENGINEER. TIGHTENING SHALL BE TO SUCH A DEGREE AS TO OBTAIN MINIMUM RESIDUAL TENSION IN EACH BOLT OF 36,050 LBS.

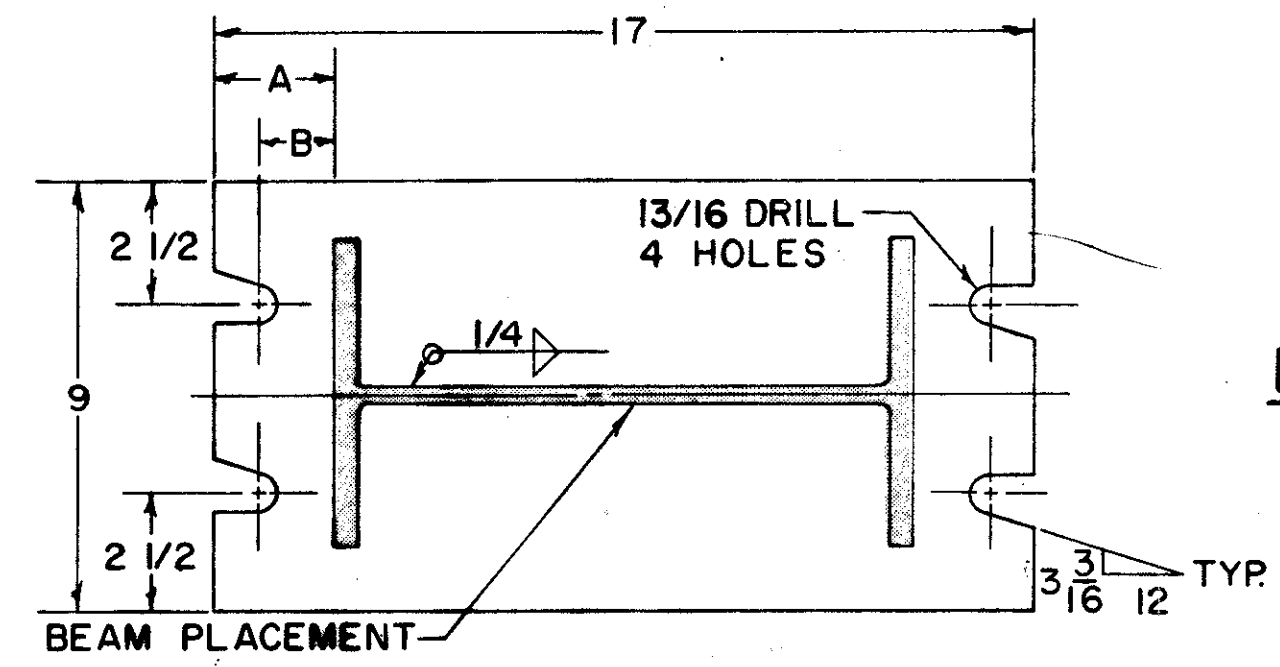
NOTE: INSTALL FUSE PLATE WITH NOTCHES TOWARD BASE

DETAIL "B"



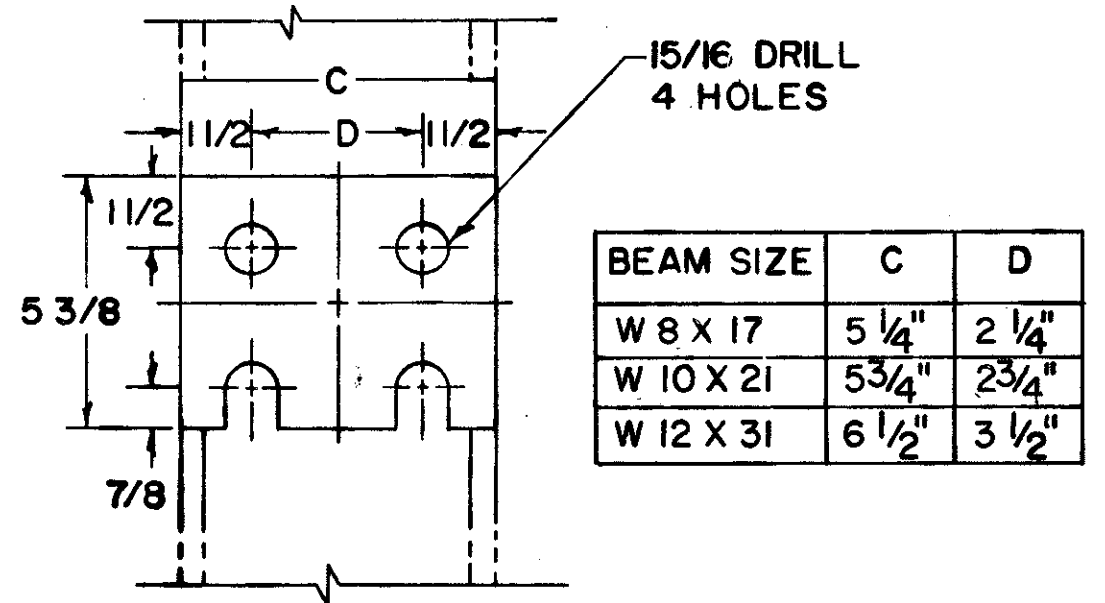
WEIGHT PER FOOT	X ± 3/32"	Y ± 1/8"
2.00 #	1 15/32"	3 1/16"
3.00 #	1 7/8"	3 1/2"
4.00 #	2"	3 5/8"

DRIVE POST DETAIL



BEAM SIZE	A	B
W 8 X 17	4 1/2"	3 5/8"
W 10 X 21	3 1/2"	2 5/8"
W 12 X 31	2 1/2"	1 5/8"

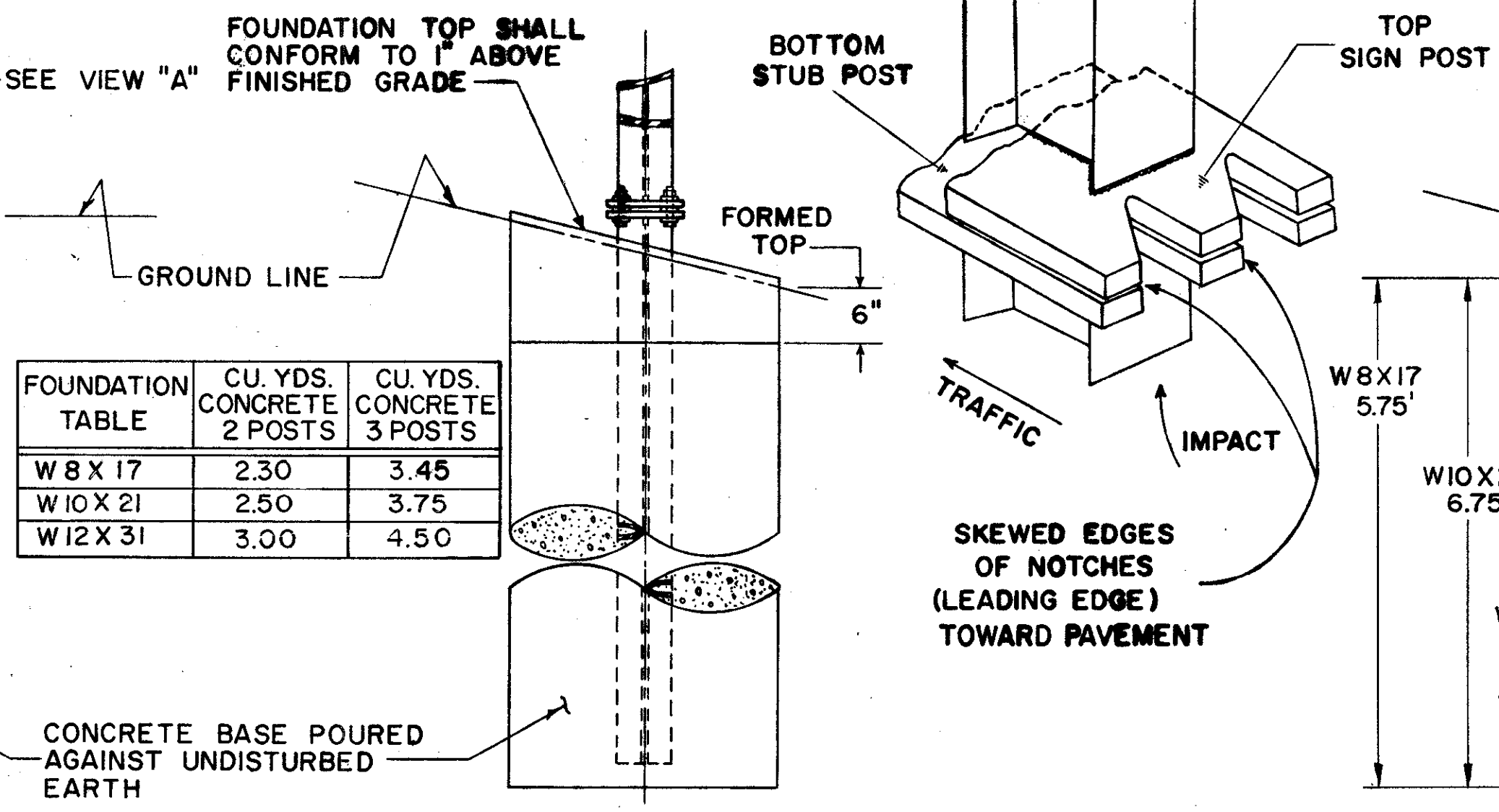
BASE PLATE DETAIL (TOP VIEW)



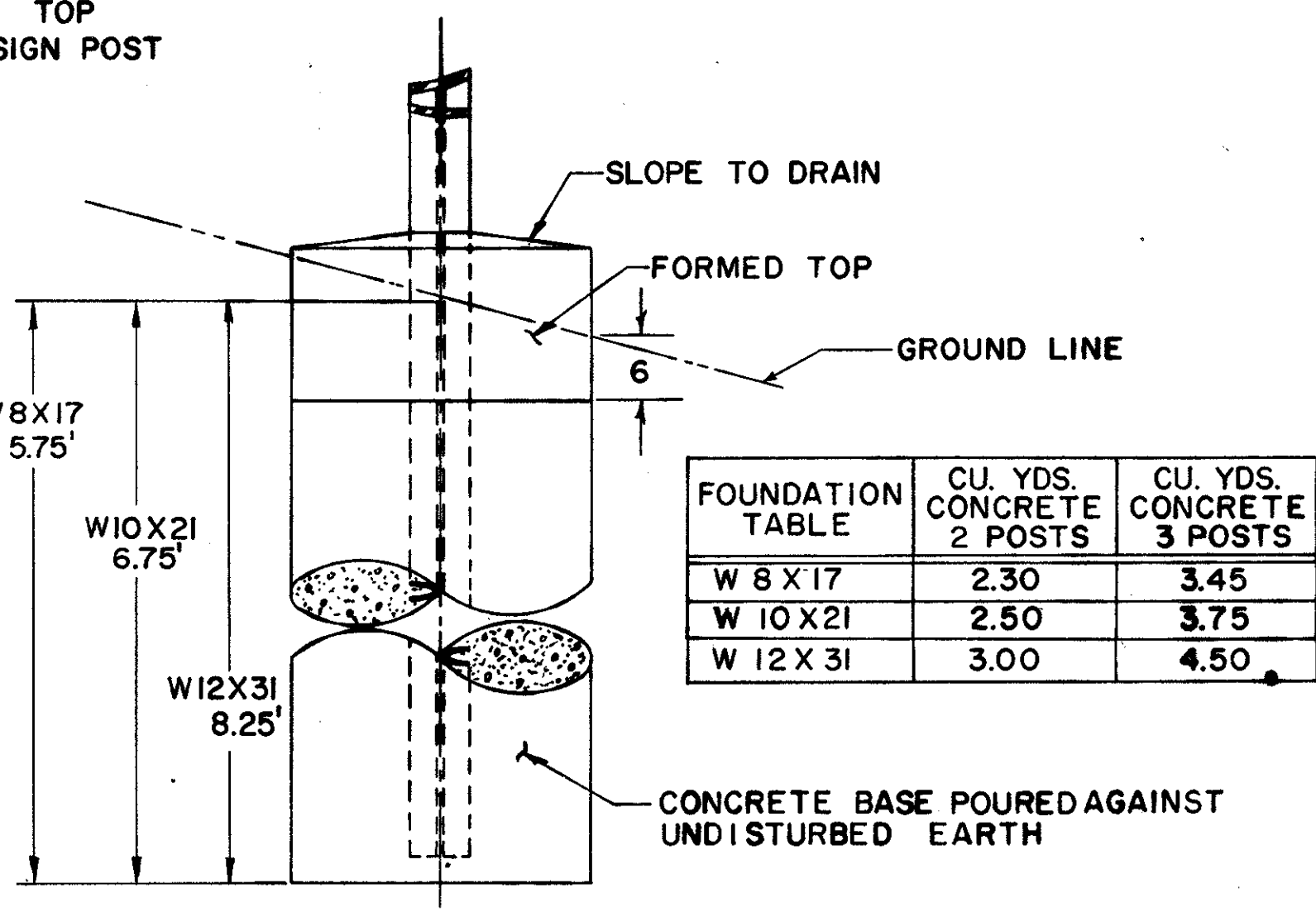
BEAM SIZE	C	D
W 8 X 17	5 1/4"	2 1/4"
W 10 X 21	5 3/4"	2 3/4"
W 12 X 31	6 1/2"	3 1/2"

FUSE PLATE DETAIL

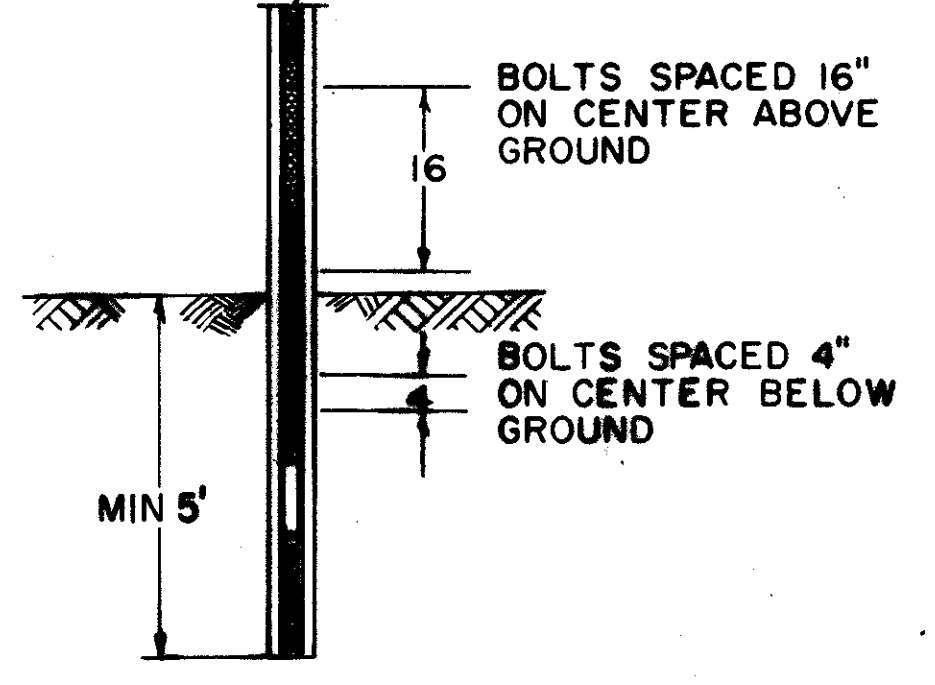
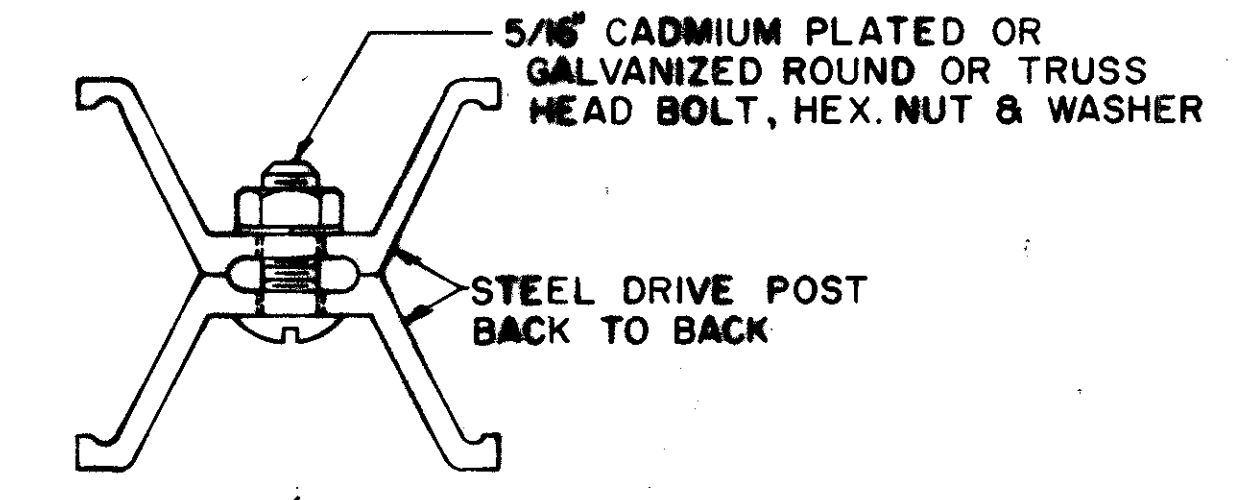
BREAKAWAY SIGN SUPPORT BASE PLATE ORIENTATION



SIDE ELEVATION FRONT ELEVATION BREAK-AWAY SUPPORT



FRONT ELEVATION STANDARD SUPPORT



6# BEAM DETAIL

NOTES: ALL MATERIALS SHALL CONFORM TO THE STATE OF OHIO, CONSTRUCTION & MATERIALS SPECIFICATIONS OR AS OTHERWISE SPECIFIED

- 1) 5# FOUNDATIONS
- 2) 7# STRUCTURAL STEEL SHAPES & PLATES
- 3) 7# H.S. STEEL BOLTS, NUTS & WASHERS

ALL DIMENSIONS IN INCHES UNLESS OTHERWISE SHOWN

BUREAU OF TRAFFIC
OHIO DEPARTMENT OF HIGHWAYS

GROUND MOUNTED SIGN SUPPORTS

APPROVED _____ ENGINEER OF TRAFFIC

DATE: 5-10-68
7-12-68
5-23-69
9-16-69
12-20-71

GMSS

STRUCTURAL SUPPORTS