

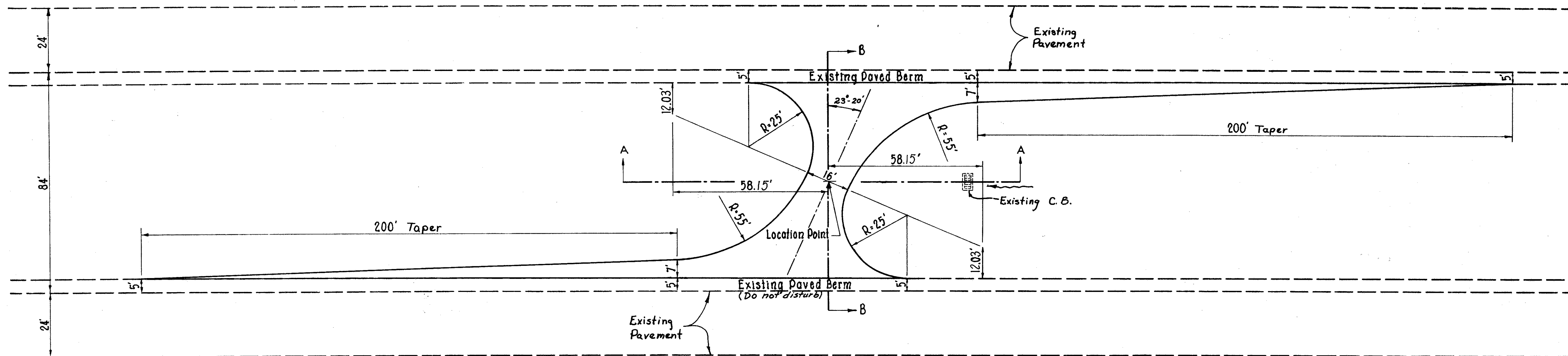
TYPICAL CROSS OVER

FED. RD. DIVISION	STATE	PROJECT	
5	OHIO		

44
111

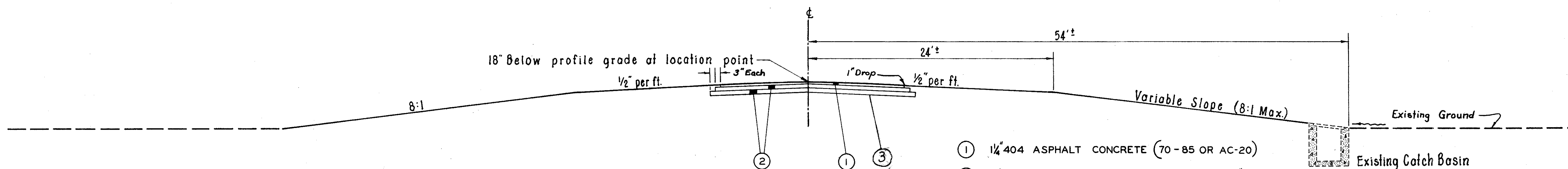
LAKE COUNTY
LAK-90-3.56

QUANTITIES
Made: LJD 6-22-72
Ckd: ERH 6-22-72



PLAN
Scale 1" = 20'

Estimated Pavement
Required For Each
Crossover = 477 sp. yds.



SECTION A-A

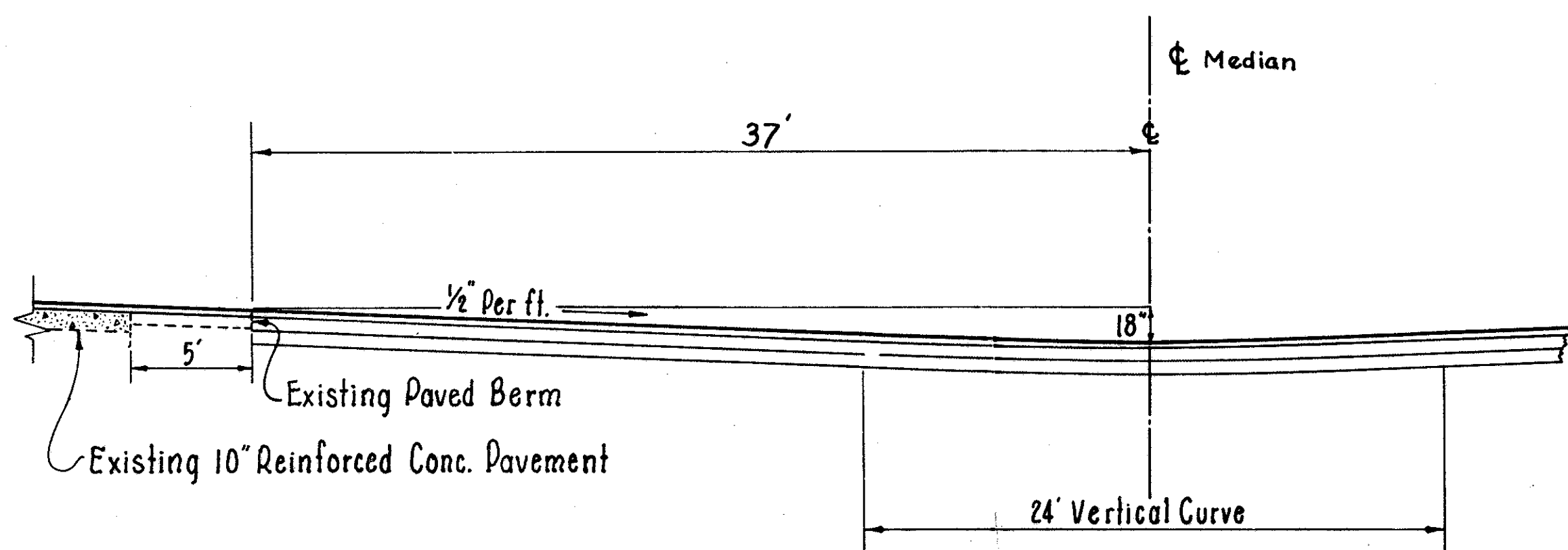
- ① 1/4" 404 ASPHALT CONCRETE (70-85 OR AC-20)
- ② 6" 402 ASPHALT CONCRETE (70-85 OR AC-20) - 2-3" COURSES
- ③ 408 BITUMINOUS PRIME COAT: 702.09, RT-2 OR RT-3, APPLIED AT THE RATE OF 0.4 GAL. PER SQ. YD.

NOTES

ALL U-TURN MEDIAN CROSS OVERS INDICATED ON THE PLAN SHEETS (SHEETS 8 TO 30) TO BE REGRADED SHALL BE PAVED AND REGRADED TO CONFORM TO THE DETAILS AS SHOWN.

OTHER EXISTING U-TURN MEDIAN CROSS OVERS ARE INDICATED TO BE REMOVED. THE EMBANKMENT FOR THE CROSS OVER SHALL BE REMOVED AND THE GROUND RESHAPED TO THE APPROXIMATE CROSS SECTION OF THE ADJACENT MEDIAN. AN EARTH DIKE AS PER STD. DRWG. CB-4 SHALL BE PROVIDED BEHIND THE CATCH BASIN.

NEW U-TURN MEDIAN CROSS OVERS SHALL BE BUILT AT THE APPROXIMATE LOCATIONS SHOWN ON THE PLAN SHEETS.



SECTION B-B (Symmetrical about Median)

ESTIMATED QUANTITIES - Normal Participation

REFERENCE SHEET NO.	CROSS-OVER LOCATION	WORK REQUIRED	404	402	408	203	203	659
			ASPHALT CONCRETE (70-85 OR AC-20) 1/4"	ASPHALT CONCRETE (70-85 OR AC-20) 6"	Bituminous Prime Coat	Excavation	Embankment	SEEDING AND MULCHING
			CU. YDS.	CU. YDS.	GAL.	CU. YDS.	CU. YDS.	SQ. YDS.
82	Sta. 160+00	Grading				0	99	416
83	Sta. 319+75	Move CB & Regrade				50	0	196
83	Sta. 39+00	Grading				38	0	103
84	Sta. 185+76	Regrade - Extend CMP				0	216	399
85	Sta. 401+30	Relocate Crossover	16.5	84.0	221	145	21	181
85	Sta. 586+25	Relocate Crossover	16.5	84.0	221	173	51	302
86	Sta. 643+85	Relocate Crossover	16.5	84.0	221	366	72	733
86	Sta. 795+60	Relocate Crossover	16.5	84.0	221	181	79	330
87	Sta. 1019+35	Relocate Crossover	16.5	84.0	221	234	61	425
TOTALS			82.5	420	1105	1187	599	3085

* 2 COURSES