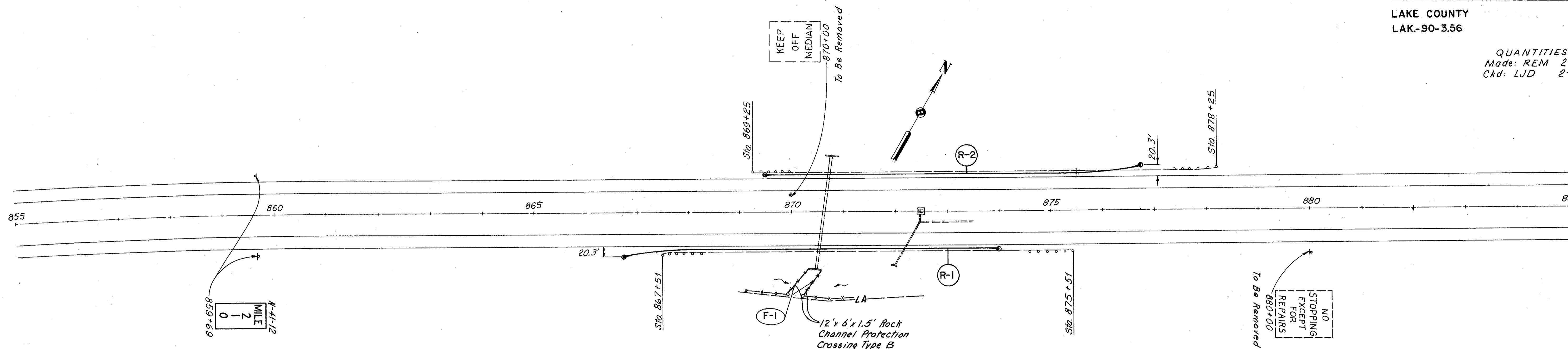


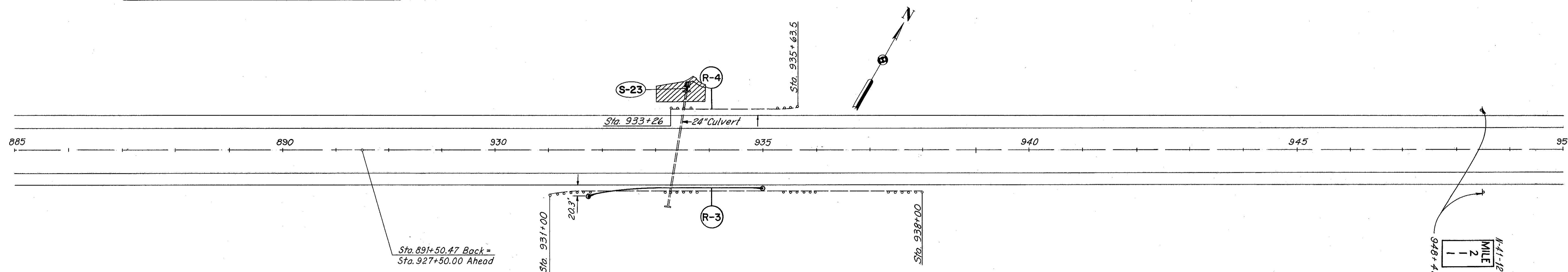
LAKE COUNTY
LAK-90-356

QUANTITIES
Made: REM 2-15-72
Ckd: LJD 2-18-72



| GUARD RAIL | | | | | | |
|------------|---------|----------|------|---|-----------------------|-----------------|
| Ref. No. | Station | | Side | 202 | 606 | 606 |
| | From | To | | GR Removed for Reuse or Storage Painted | GR Type 5 as per plan | Anchor Assembly |
| | | | | Lin. Ft. | Lin. Ft. | Each |
| R-1 | 866+75 | 874+00 | Rt. | 800 | 675 | 2 |
| R-2 | 869+50 | 876+75 | Lt. | 900 | 675 | 2 |
| R-3 | 931+75 | 935+00 | Rt. | 700 | 275 | 2 |
| R-4 | 933+26 | 935+63.5 | Lt. | 237.5 | | |
| Totals | | | | 2637.5 | 1625 | 6 |

| FENCE | | | | | |
|----------|---------|----|------|---------------|--------------------------------|
| Ref. No. | Station | | Side | 607 | 601 |
| | From | To | | Fence Type 47 | Rock Channel Protection Type B |
| | | | | Lin. Ft. | Cu. Yds. |
| F-1 | 870+00 | EB | Rt. | 125 | 11 |



Note:
For Guard Rail placement See Sheet 47.
For Signing Quantities See Sheets 38 & 39.

For Culvert Details See Sheet No. 61.