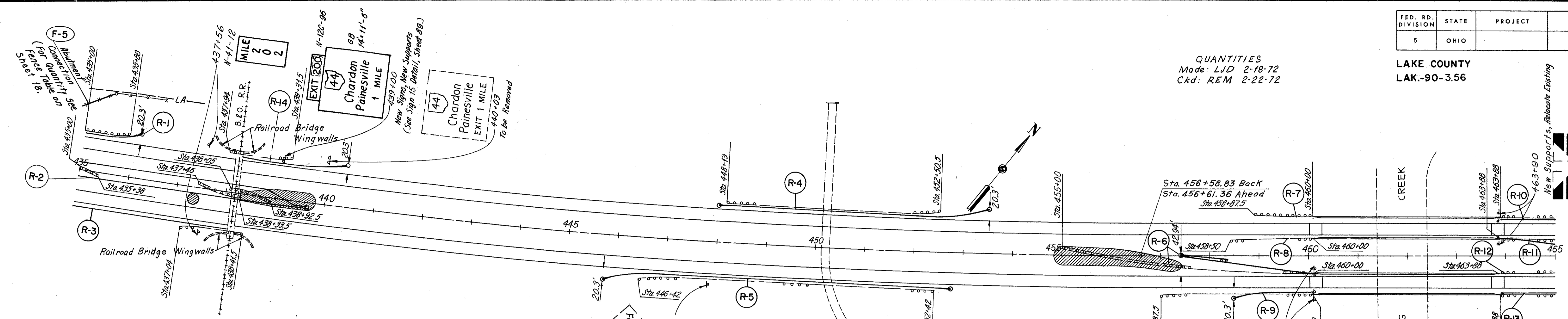


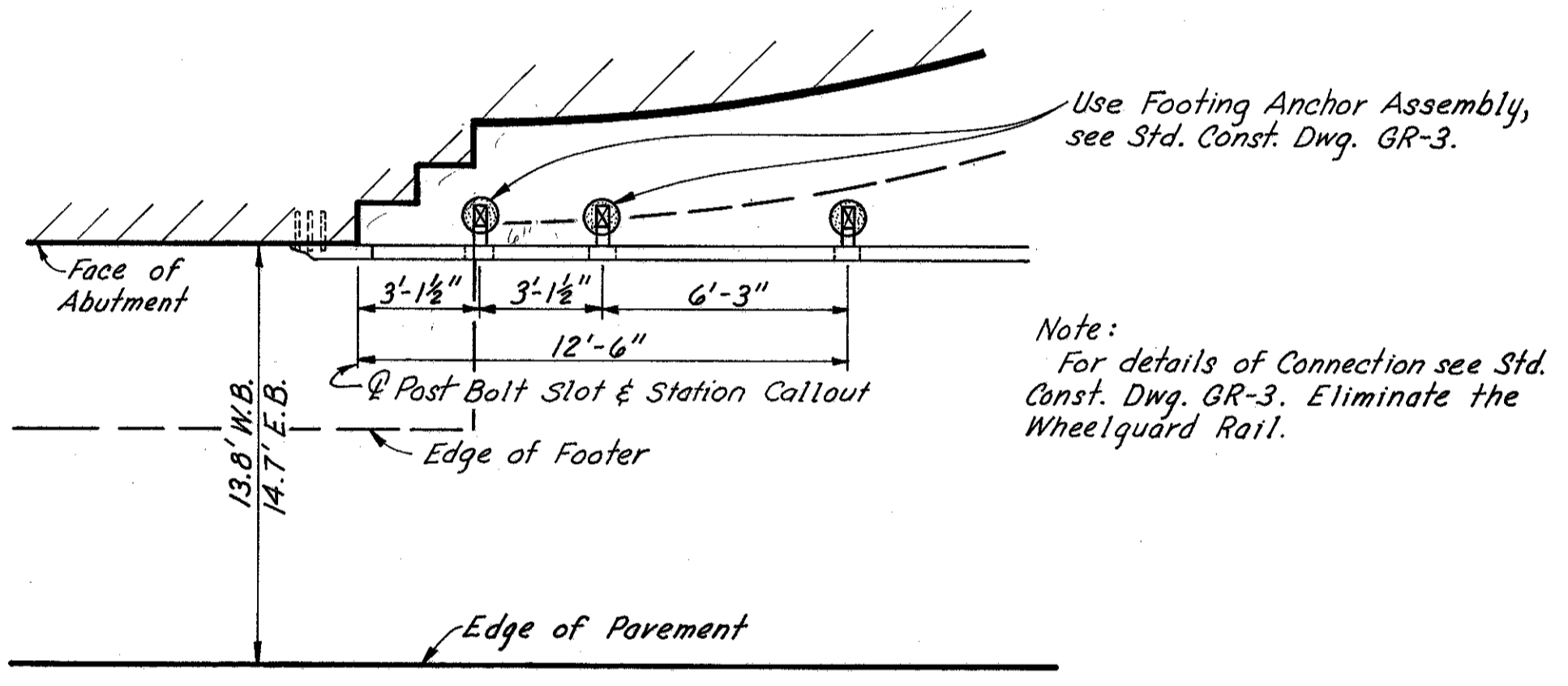
LAKE COUNTY
LAK-90-356

QUANTITIES
Made: LJD 2-18-72
Ckd: REM 2-22-72



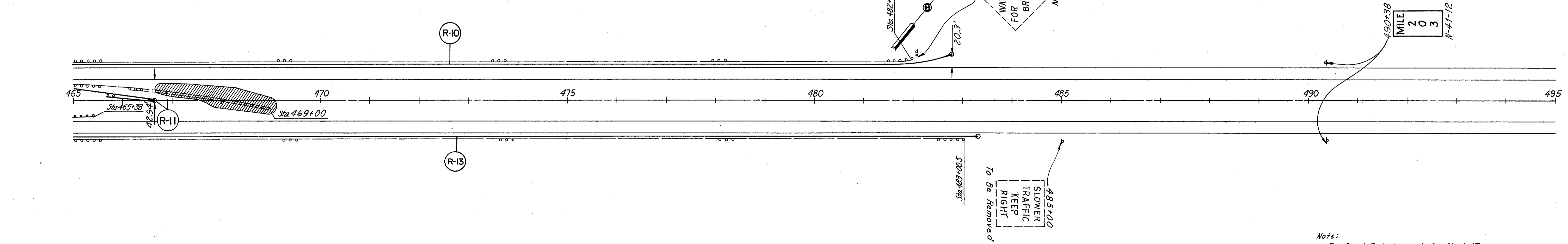
Ref. No.	Station		Side	GUARD RAIL														
	From	To		202			606		606		606							
				Removed for Re-use or Storage Painted	Removed for Re-use or Galv.	Removed for Re-use or Storage Painted	Type 5 as per plan	Type 5 as per plan	Anchor Assembly	Anchor Assembly Barrier Design	Type E	Type FM	Type A*					
R-1	435+00	436+12.5	Lt.	88			87.5		1									
R-2	435+00	439+62.5	Rt.	138		75	87.5			1								
R-3	435+00	438+08	Rt.	137.5			308										1	
R-4	448+00	453+50	Lt.	437.5			500		2									
R-5	445+75	452+75	Rt.	600			650		2									
R-6	457+25	460+00	Rt.	262.5		250	175	75		1	1							
R-7	458+87.5	460+00	Lt.	50	62.5													
R-8	458+50	460+00	Lt.	150														
R-9	458+50	460+00	Rt.	312.5			125			1		1						
R-10	463+88	482+75.5	Lt.	1812.5			1862.5			1		1						
R-11	463+88	466+63	Lt.	225		287.5	175	75		1	1							
R-12	463+88	465+38	Rt.	150														
R-13	463+88	483+25.5	Rt.	1787.5	125		1912.5			1							1	
R-14	438+30.2	440+30.2	Lt.	137.5			125			1							1	
Totals						6288.5	187.5	612.5	6845.5	150	9	3	4	1	2			

* modified as per plan



BRIDGE TERMINAL ASSEMBLY TYPE A*
STA. 438+08.00 E.B.
STA. 438+30.20 W.B.

Note:
Existing "bridge end marker" signs are located in front of guard rail in shoulder. Move them 2' behind guard rail. See Detail Sheet 35.



Note:
For Guard Rail placement, See Sheet 47.
For Signing Quantities, See Sheets 37, 43, & 90.