


LAKE COUNTY


EXISTING STRUCTURE DATA



- TYPE: CONTINUOUS STEEL GIRDERS WITH REINFORCED CONCRETE DECK AND SUBSTRUCTURE
- SPANS: 90'-0", 129'-11", 102'-8", 101'-8", 101'-10", 97'-0"
CENTERLINE TO CENTERLINE OF BEARINGS
- SKEW: 45° 57' 16" RIGHT FORWARD
- ROADWAY: 70'-0" FACE TO FACE OF CURBS WITH 2'-0" SAFETY CURB AND 1'-0" PARAPET EACH SIDE. CONCRETE MEDIAN VARIES 3'-0" TO 14'-0"
- LOADING: C.F. 2000 (57) ADEQUATE FOR AASHO ALTERNATE LOADING
- WEARING SURFACE: 1" MONOLITHIC CONCRETE
- APPROACH SLAB: 25' LONG
- ALIGNMENT: TANGENT

PROPOSED STRUCTURE DATA

- TYPE: EXISTING STEEL GIRDERS AND REINFORCED CONCRETE SUBSTRUCTURE WITH NEW REINFORCED CONCRETE DECK
- SPANS: 90'-0", 129'-11", 102'-8", 101'-8", 101'-10", 97'-0"
- SKEW: 45° 57' 16" RIGHT FORWARD
- ROADWAY: 66'-0" FACE TO FACE OF CURBS WITH 5'-0" SIDEWALK AND 1'-0" PARAPET EACH SIDE. CONCRETE MEDIAN VARIES 3'-0" TO 14'-0"
- LOADING: HS-20-44, CASE II AND ALTERNATE MILITARY LOADING
- WEARING SURFACE: 1" MONOLITHIC CONCRETE
- APPROACH SLAB: 25' LONG
- ALIGNMENT: TANGENT

 ITEM 254 BITUMINOUS PAVEMENT PLANING FROM 1/4" AT STA. 24+08 TO 0" AT STA. 25+15± AND 1 1/4" DEPTH FROM STA. 33+29.07 TO STA. 35+00. REPLACE WITH ITEM 404-1 1/4" ASPHALT CONCRETE.

 RESURFACE WITH ITEM 404-1 1/4" ITEM 403-VARIABLE DEPTH (AS NECESSARY), AND ITEM 402 2" MIN. DEPTH ASPHALT CONCRETE.

 BENCH MARK = EL. 751.64
 SET ON NORTHEAST CORNER OF BASE FOR SIGNAL GUY.
STA. 25+20± LT. OF S.R. 91

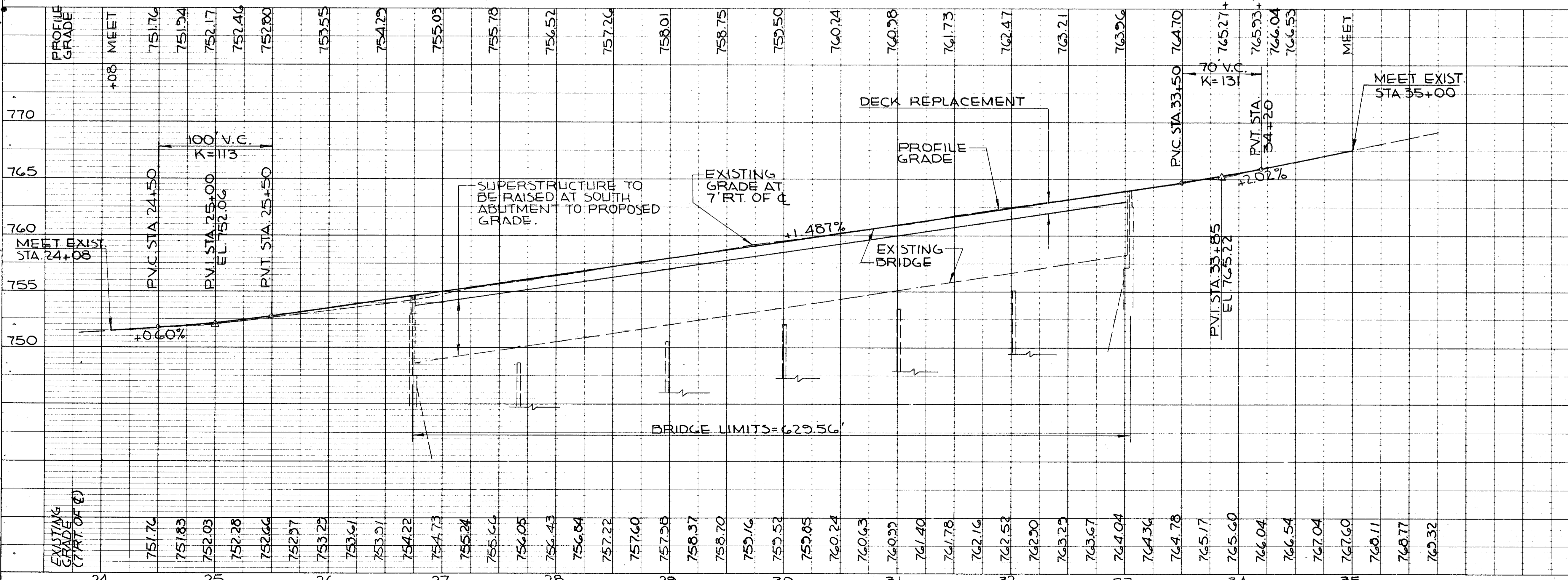
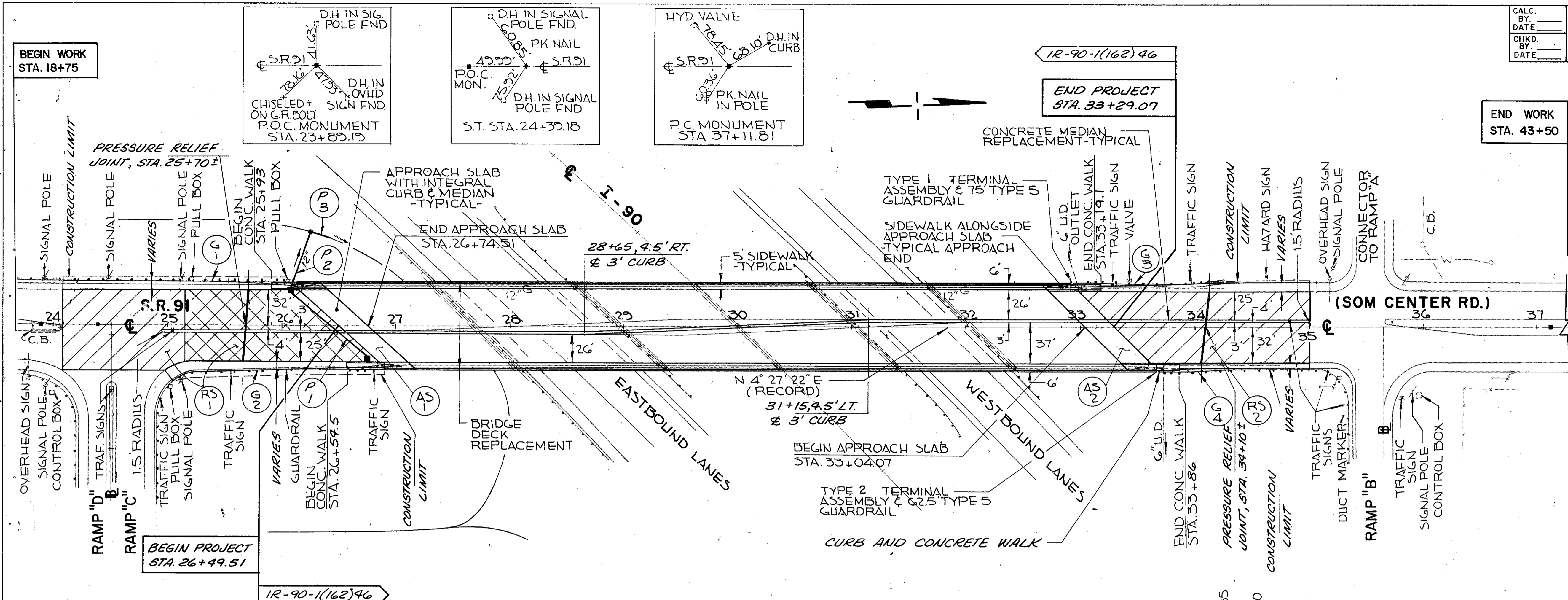


PLATE 1 PLAN PROFILE - P.R. & T. STANDARD

PLAN AND PROFILE