

GENERAL NOTES

- BARRICADES:** BARRICADES SHALL BE CONSTRUCTED ACCORDING TO DETAILS SHOWN. WHEN THE ROAD IS CLOSED TO TRAFFIC, BARRICADES AND GATES SHALL BE USED TO EFFECTIVELY CLOSE THE ENTIRE ROADWAY INCLUDING THE MEDIAN OF DIVIDED HIGHWAYS. IN URBAN AREAS AND AT LOCATIONS WHERE IT IS IMPRACTICAL TO EXTEND THE BARRICADE TO THE RIGHT-OF-WAY LINE BECAUSE OF A SIDEWALK WHICH IS TO REMAIN OPEN OR OTHER OBSTRUCTION, THE ENDS OF THE BARRICADE SHALL BE LOCATED AS DIRECTED BY THE ENGINEER TO EFFECT THE DESIRED CLOSING OF THE HIGHWAY.
- PAINTING AND REFLECTORIZATION:** IN CONSTRUCTION OR MAINTENANCE AREAS ALL RAILS OF THE BARRICADES AND GATES SHALL BE REFLECTORIZED WITH ORANGE AND WHITE REFLECTORIZED TYPE G SHEETING IN 152 mm WIDE ALTERNATE STRIPES WHICH SLOPE DOWNWARD TOWARD THE CENTER LINE OF THE ROAD AT AN ANGLE OF 45°. THE TOP RAIL OF THE A-FRAME AND ALL THREE RAILS OF THE HINGED GATE SHALL BE STRIPED ON BOTH SIDES. ALL POST, BRACES, GATE LEGS, AND ANY UNSTRIPED RAILS SHALL BE PAINTED WHITE. (GATES AND BARRICADES USED IN PERMANENT OR SEMIPERMANENT APPLICATION SHALL DIFFER ONLY IN THAT THEY SHALL USE RED AND WHITE STRIPES).
- GATES:** ONE GATE SHALL BE ERECTED FOR EACH TRAFFIC LANE. GATES SHALL BE CHAINED AND PADLOCKED TO ONE ANOTHER AND TO ADJACENT POST OF THE BARRICADES. CHAINS SHALL BE 6.4 mm STOCK OR LARGER WITH WELDED LINKS. A HINGED GATE MAY BE USED AND SHALL BE SUPPORTED AT THE CENTER IN AN APPROVED MANNER.
- TYPE A FLASHING WARNING LIGHTS:**
TYPE A FLASHING WARNING LIGHTS ARE REQUIRED ON THE OW-128 AND THE FIRST OW-120 SIGNS.
- TYPE B FLASHING WARNING LIGHTS:**
EACH GATE SHALL BE EQUIPPED WITH A TYPE B FLASHING WARNING LIGHT, CONSPICUOUSLY VISIBLE AT ALL DISTANCES UP TO 305 m UNDER NORMAL ATMOSPHERIC CONDITIONS. THE LIGHT SHALL BE IN OPERATION AT ALL TIMES DURING THE PERIOD THE HIGHWAY IS CLOSED.
- SIGNS:** WHERE THE ROAD IS CLOSED TO TRAFFIC BY THE ERECTION OF GATES AND BARRICADES, R-75 SIGNS SHALL BE MOUNTED ON THE GATES AS SHOWN. THE ADVANCE WARNING SIGNS SHOWN ON THIS DRAWING WILL NOT BE REQUIRED WHEN ALL TRAFFIC HAS BEEN DIRECTED FROM THE ROADWAY AT OR JUST IN ADVANCE OF THE GATES AND BARRICADES SUCH AS ON A LIMITED ACCESS HIGHWAY OR WHEN A TEMPORARY RUNAROUND SIMILAR TO FIGURE C-24 OF THE OHIO MANUAL IS USED. ADVANCE WARNING SIGNS SHALL BE REQUIRED IN ALL OTHER SITUATIONS AND WHEN REQUIRED IN THE PLANS. ADVANCE WARNING SIGNS ON AN APPROACH SHALL CONSIST OF TWO OW-120 SIGNS WITH DISTANCE PLAQUES PLACED ABOUT 152 m AND 305 m FROM THE CLOSURE AND A OW-128 PLACED ABOUT 457 m FROM CLOSURE, THE SIGNS SHALL BE PLACED ON BOTH SIDES OF THE ROAD (DUALLED) FOR 4-LANE DIVIDED HIGHWAYS OR WHEN REQUIRED BY THE PLANS.

OPERATION: ON A 2-LANE 2-WAY ROADWAY THE CONTRACTOR WILL NORMALLY OPEN ONLY THE LEFT HAND GATE AS NECESSARY TO ALLOW VEHICLES TO ENTER AND IMMEDIATELY CLOSE IT. BOTH GATES WILL NOT NORMALLY BE OPENED AT THE SAME TIME. THE CONTRACTOR SHALL ASSIGN AN EMPLOYEE TO ASSURE THAT GATES ARE CLOSED AND CHAINED SHUT AT THE END OF EACH WORKDAY.

MATERIALS: GATES OR BARRICADES SHALL BE FABRICATED OF THE FOLLOWING MATERIALS:
FIXED BARRICADE:

- POST: - 102 X 102 mm SQUARE OR 127 mm DIA. (MAXIMUM) WOOD (MAY BE TREATED)
 - NO. 3, DRIVE POST (712.20)
 - UP TO 51 mm SQUARE, 14 GAUGE PUNCHED STEEL TUBING
- RAILS: - 25 X 203 mm OR 51 X 203 mm COMMON LUMBER
 - 203 X (16 TO 25 mm) THICK EXTERIOR PLYWOOD
 - EXTRUDED PLASTIC OR FORMED SHEET METAL WITH A 203 mm WIDE SURFACE AND OF SUFFICIENT STIFFNESS TO RESIST TYPICAL WIND LOADS OF UP TO 1436 pascals, BUT HAVING A WEIGHT OF NOT MORE THAN 7.5 kg/m.

FASTENERS: - SPIKES (OF SUFFICIENT LENGTH TO CLINCH)
- SCREWS/BOLTS (8 mm MIN. DIA.) METAL GUSSET PLATES AND FORMED OR WELDED METAL JOINTS OF SUFFICIENT SIZE AND QUANTITY TO RESIST THE WIND LOAD SPECIFIED ABOVE. ALL SLIPFIT CONNECTIONS SHALL ALSO BE BOLTED TO PREVENT UNAUTHORIZED DISASSEMBLY

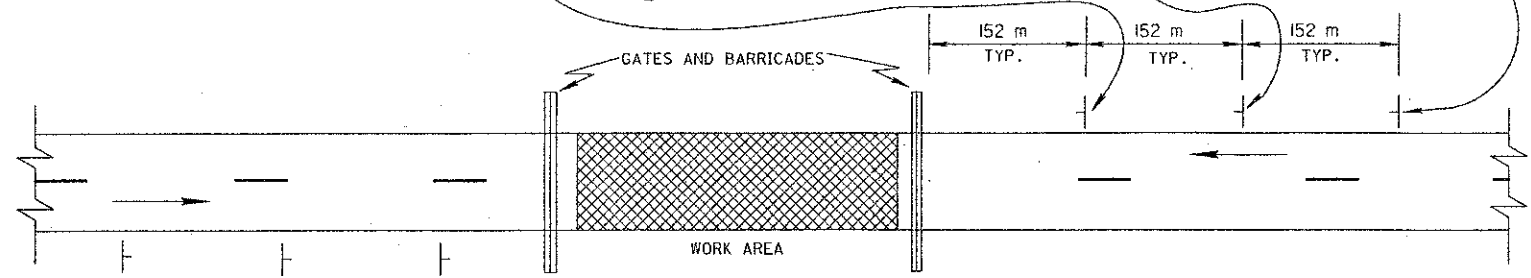
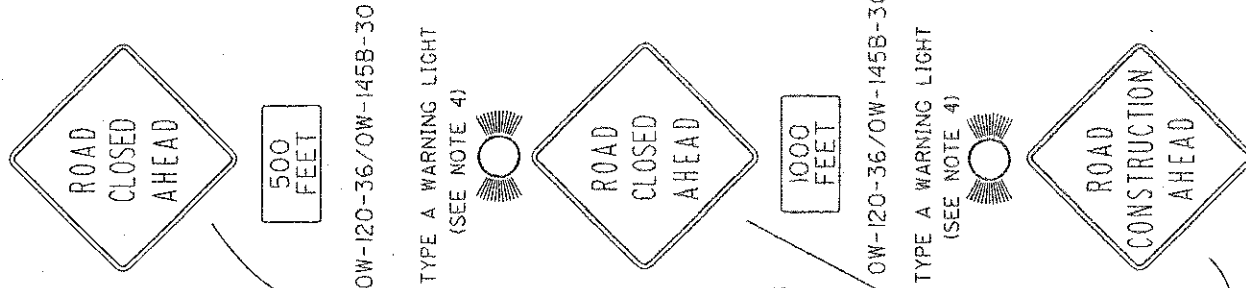
GATES:
LEGS: - 51 X 152 mm COMMON LUMBER ("A FRAME" ONLY)
- 102 X 102 mm WOOD
- UP TO 51 mm SQUARE, 14 GAUGE PUNCHED STEEL TUBING
- NO. 3 DRIVE POST (712.20)

RAILS: - 51 X 203 mm COMMON LUMBER
FASTENERS: (SAME AS BARRICADES ABOVE)
FEET: - 152 X 152 mm WOOD
- NO. 3 DRIVE POST (712.20)
- UP TO 57 mm SQUARE, 12 GAUGE PUNCHED STEEL TUBING

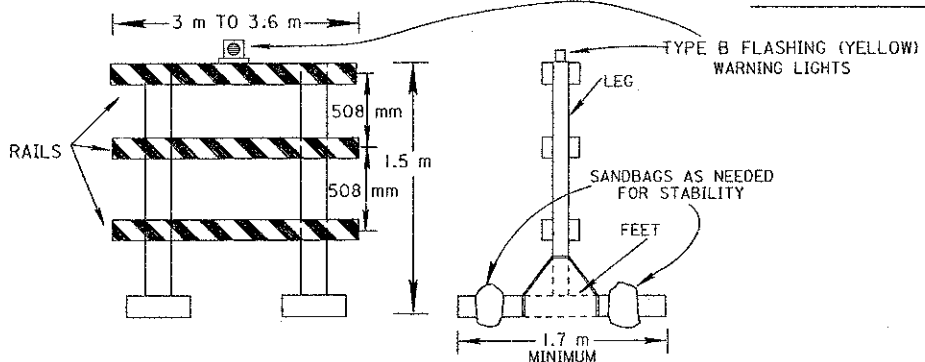
BRACES: - 51 X 152 mm (MAXIMUM) COMMON LUMBER
- 102 mm WIDE X 19 mm THICK PLYWOOD STRIPS
- NO. 2 DRIVE POST (712.20)

HINGED GATE:
GATE: - 3.6 m X 1.2 m STEEL FRAME, FARM GATE
RAILS: (SAME AS FIXED BARRICADES ABOVE)
HARDWARE: - HINGED SCREWHOOKS FOR HANGING GATE TO POST

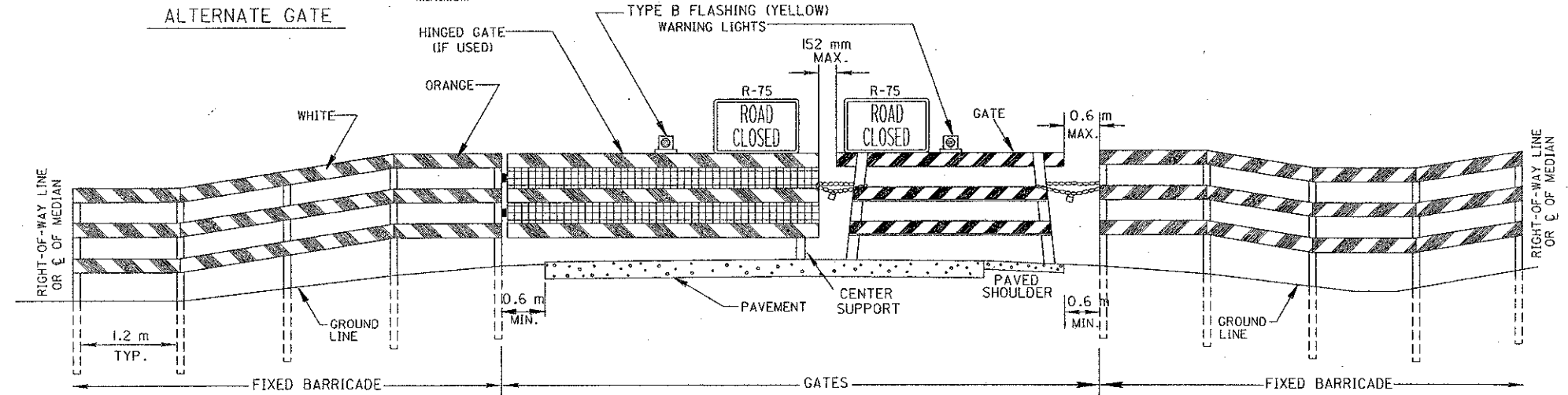
LUMBER: LUMBER USED IN THE CONSTRUCTION OF GATES AND BARRICADES SHALL BE COMMON YELLOW PINE OR COMMON DOUGLAS FIR, SURFACED ON FOUR SIDES STANDARD, ALL SIZES ARE NOMINAL.



ADVANCE WARNING SIGNS FOR CLOSURE



ALTERNATE GATE



METRIC

ALL WORK AND TRAFFIC CONTROL DEVICES SHALL BE IN ACCORDANCE WITH 614 AND OTHER APPLICABLE PORTIONS OF THE C & M SPECIFICATIONS AS WELL AS IN ACCORDANCE WITH PART 7 OF OMTCD. PAYMENT FOR ALL LABOR, EQUIPMENT AND MATERIALS TO PROVIDE THIS METHOD OF TRAFFIC CONTROL SHALL BE INCLUDED IN THE LUMP SUM BID FOR 614 MAINTAINING TRAFFIC, UNLESS SEPARATELY ITEMIZED IN THE PLAN.

BUREAU OF DESIGN SERVICES DIVISION OF HIGHWAYS OHIO DEPARTMENT OF TRANSPORTATION	
MAINTENANCE OF TRAFFIC	DATE 04/25/94
GATES AND BARRICADES IN POSITION	
STANDARD CONSTRUCTION DRAWING	MT-101.60M
APPROVED <i>Jay C. [Signature]</i>	ENGR. OF DESIGN SERVICES