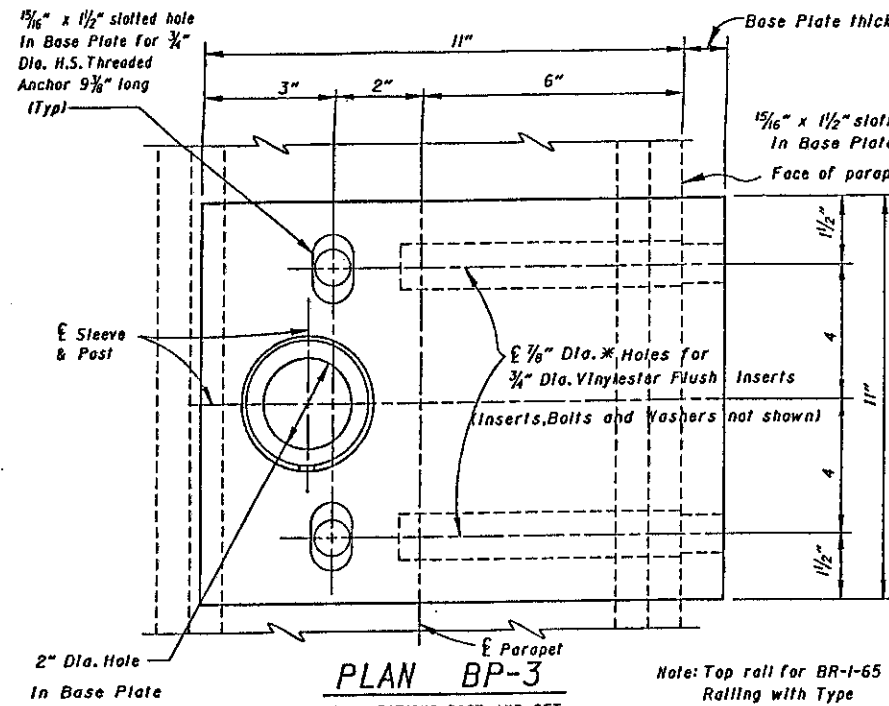


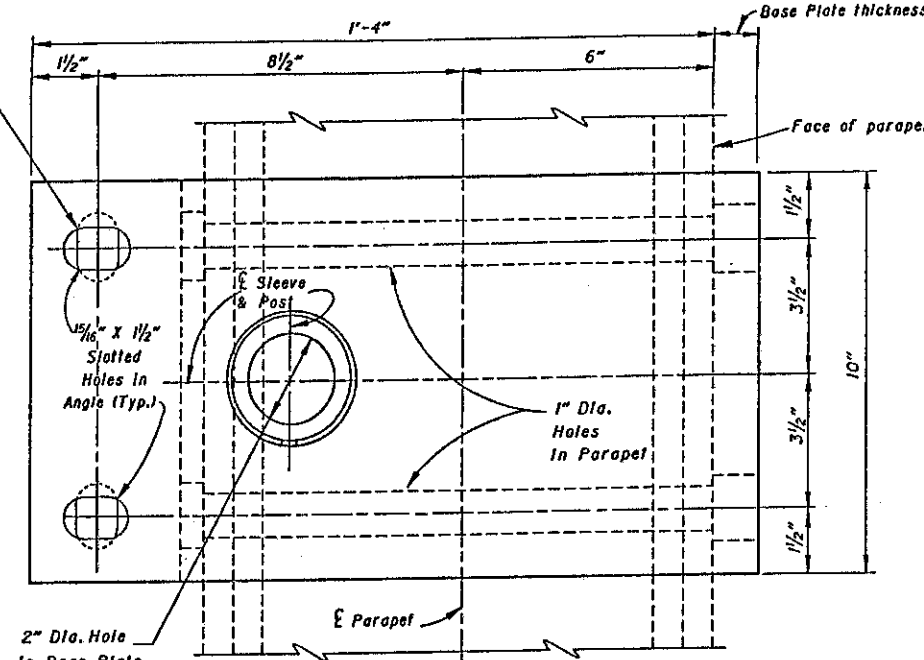
RETROFIT BASE PLATES FOR FENCE POSTS



PLAN BP-3

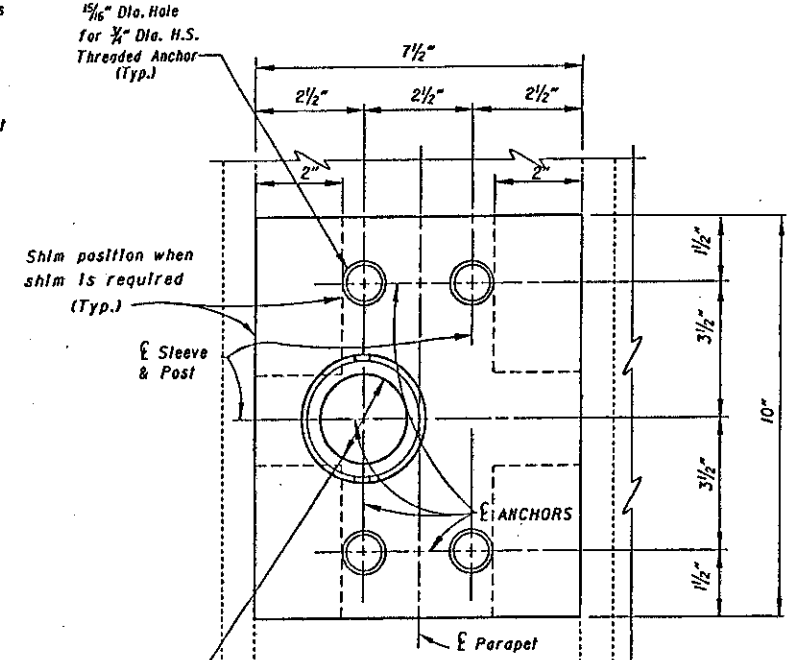
SHIM POSITIONS, POST AND SET SCREW NOT SHOWN

Note: Top rail for BR-1-65 Railing with Type 2 posts not shown.



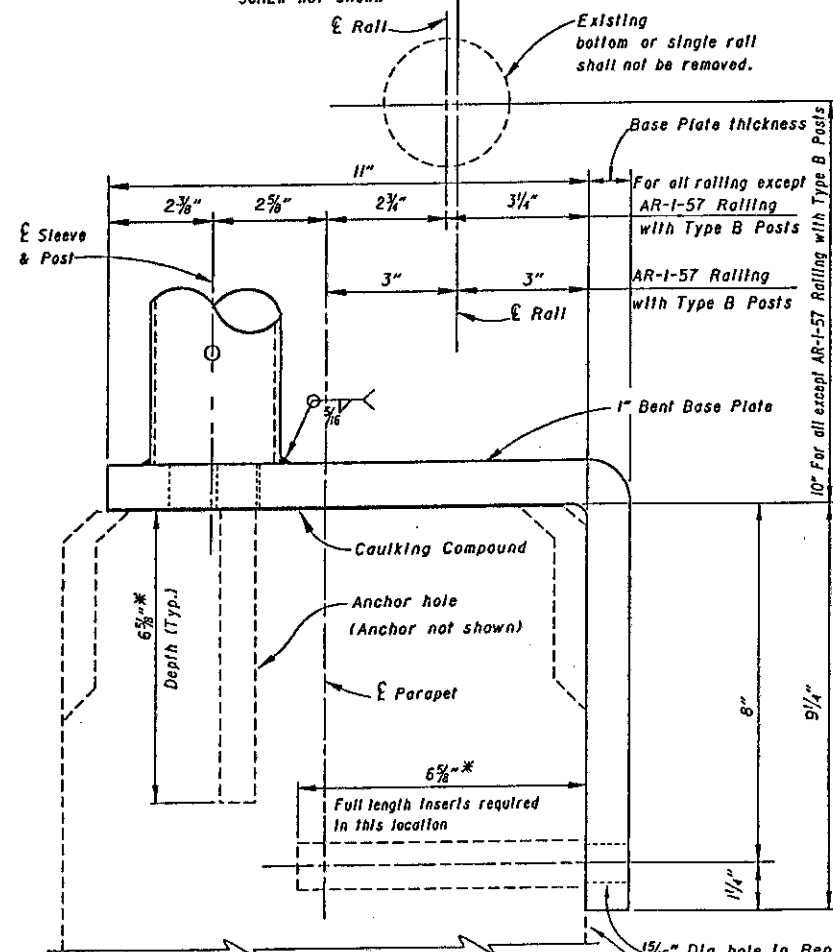
PLAN BP-4

SHIM POSITIONS, POST AND SET SCREW NOT SHOWN



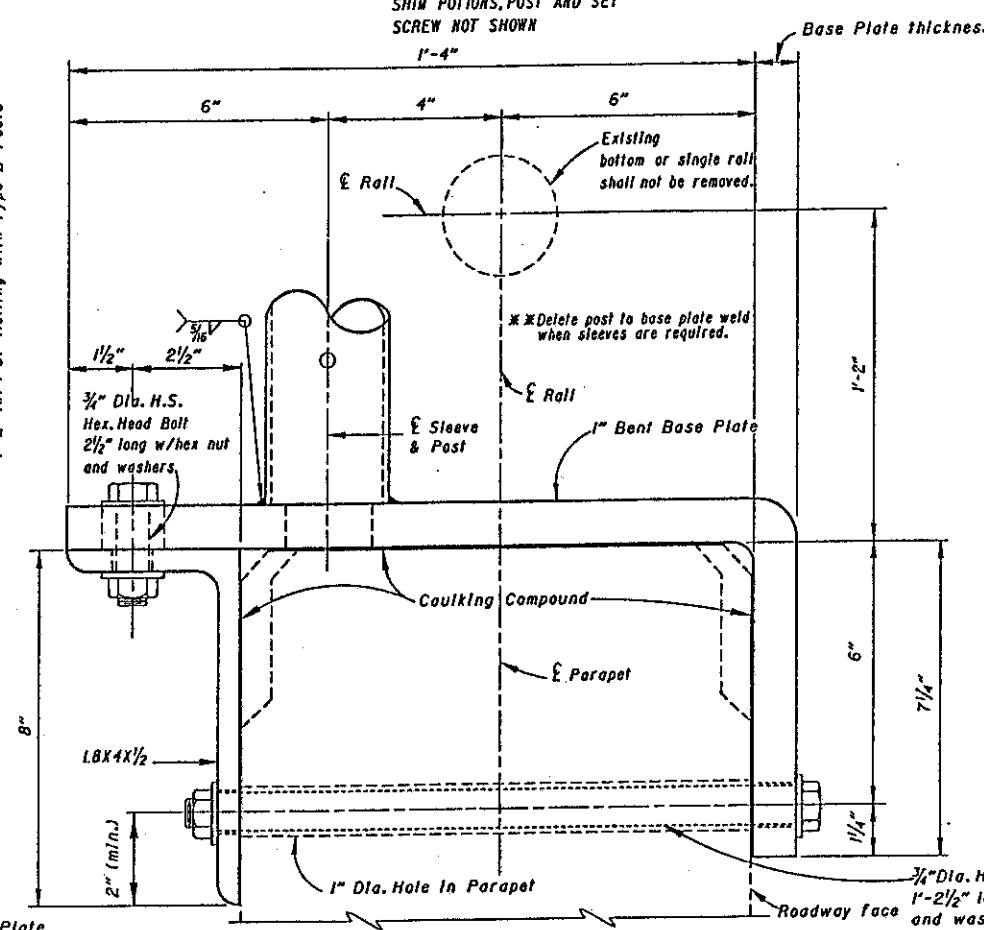
PLAN BP-5

SHIM POSITIONS SHOWN



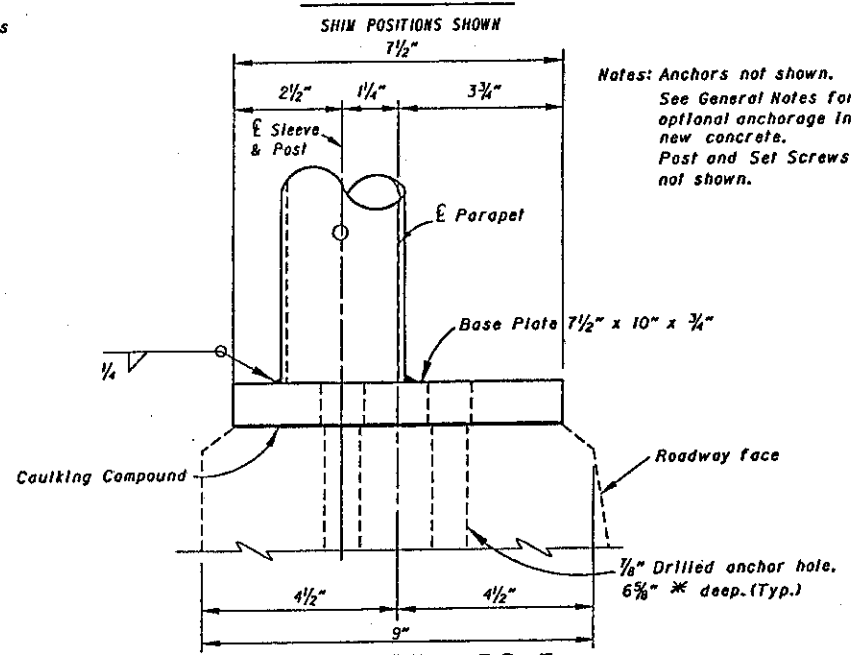
END VIEW BP-3

Base Plate shall be used on concrete parapet with aluminum railing as shown on Standard Drawings BR-2-82, BR-2-67, BR-1-65 with Types 1 & 2 posts, and AR-1-57 with Type B posts. Existing aluminum rail shall not be removed. Base Plate requires a sleeve. See Sleeve Details on Sheet [276].



END VIEW BP-4

Base Plate shall be used on concrete parapet with aluminum railing as shown on Standard Drawing AR-1-57 with Type A and C posts. Existing aluminum rail shall not be removed. Base Plate requires a sleeve. See Sleeve Details on Sheet [276].



END VIEW BP-5

Base Plate shall be used to connect fence post to existing BR-1-67 parapet and existing or new BR-1 deflector parapet when 6'-0" high fence is specified. Base Plate requires a sleeve. See Post Sleeve Details on Sheet [276].

REVISIONS		STATE OF OHIO DEPARTMENT OF TRANSPORTATION BUREAU OF BRIDGES AND STRUCTURAL DESIGN	
REV. 2-1-92		STANDARD	
REV. 3-24-93		VANDAL PROTECTION FENCE BASE PLATES WHEN RAILS ARE NOT REMOVED FOR FENCE INSTALLATION	
APPROVED:	<i>[Signature]</i>	ENGINEER OF BRIDGES	DRAWING NO. VPF-1-90
DATE: 9-26-90			SHEET NO. 3 OF 6 SHEETS
PREPARED	DRAWN	CHECKED	REVIEWED
JCR	GFJ	RLD	WTF