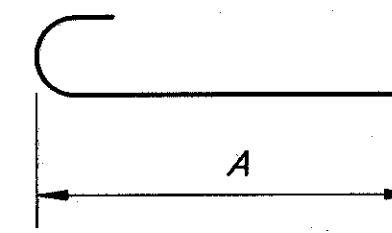
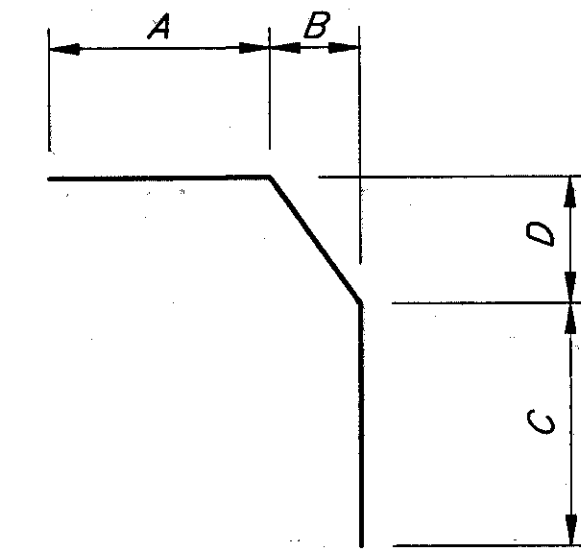


MARK	NO.	LENGTH	TYPE	SERIES INCR.	*WEIGHT	A	B	C	D
PARAPET REINFORCEMENT									
X501	16	10'-0"	STR		167				
X502	8	5'-8"	BT		47				
X503	8	5'-8"	STR		47				
X504	16	5'-0"	STR		83				
X505	8	16'-10"	STR		140				
X506	8	16'-3"	STR		136				
Y501	12	7'-1"	11		89				
Y502	4	3'-10"	5		16	3'-3"			
Y503	4	3'-9"	5		16	3'-2"			
Y504	4	3'-8"	5		15	3'-1"			
Y505	4	3'-7"	5		15	3'-0"			
Y506	4	3'-6"	5		15	2'-11"			
Y507	4	3'-5"	5		14	2'-10"			
Y508	4	3'-4"	5		14	2'-9"			
Y509	4	3'-3"	5		14	2'-8"			
Y510	4	3'-2"	5		13	2'-7"			
Y511	4	3'-1"	5		13	2'-6"			
Y512	4	3'-0"	5		13	2'-5"			
Y601	NOT USED								
Y602	56	3'-8"	7		308	8"	6"	2'-3"	8 1/2"
Y603	76	4'-6"	STR		514				
Y604	NOT USED								
Y605	12	2'-10"	STR		51				
TOTAL WEIGHT					1740				

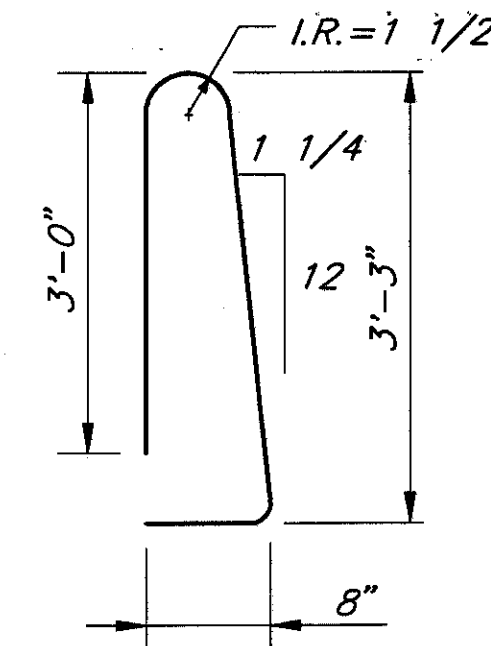
* WEIGHT COLUMN IS FOR INFORMATION ONLY



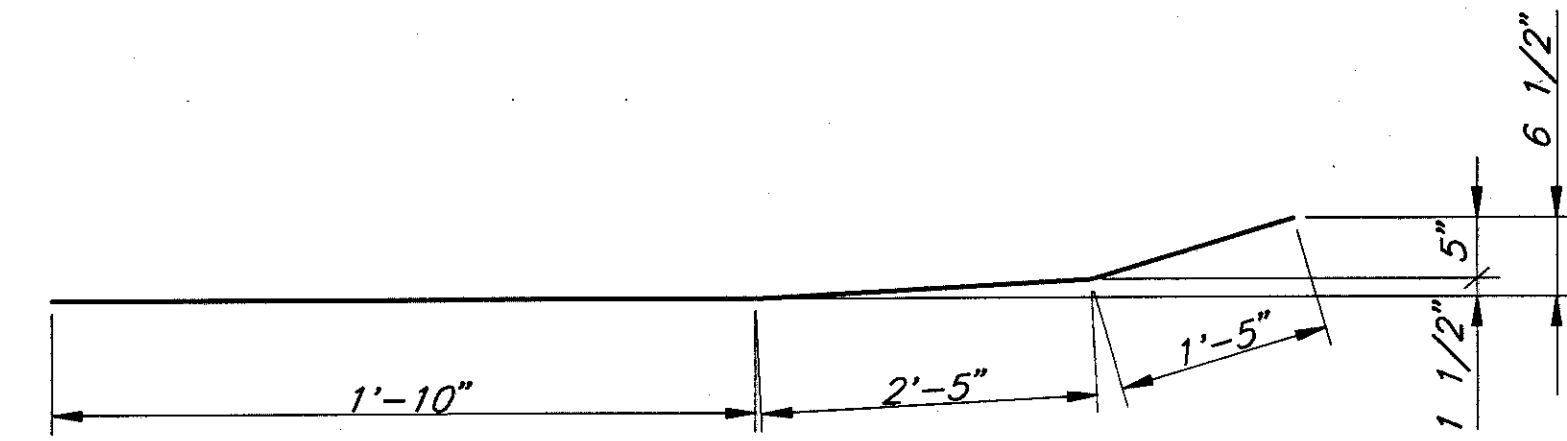
TYPE-5



TYPE-7



TYPE-11



X502

NOTES:

1. NEW REINFORCING STEEL MAY REQUIRE FIELD CUTTING OR BENDING TO BE PROPERLY FITTED. PAYMENT SHALL BE INCLUDED IN 509.
2. FOR ADDITIONAL NOTES SEE SHEET 22 / 24.
3. X, Y = TRANSITION PARAPET.