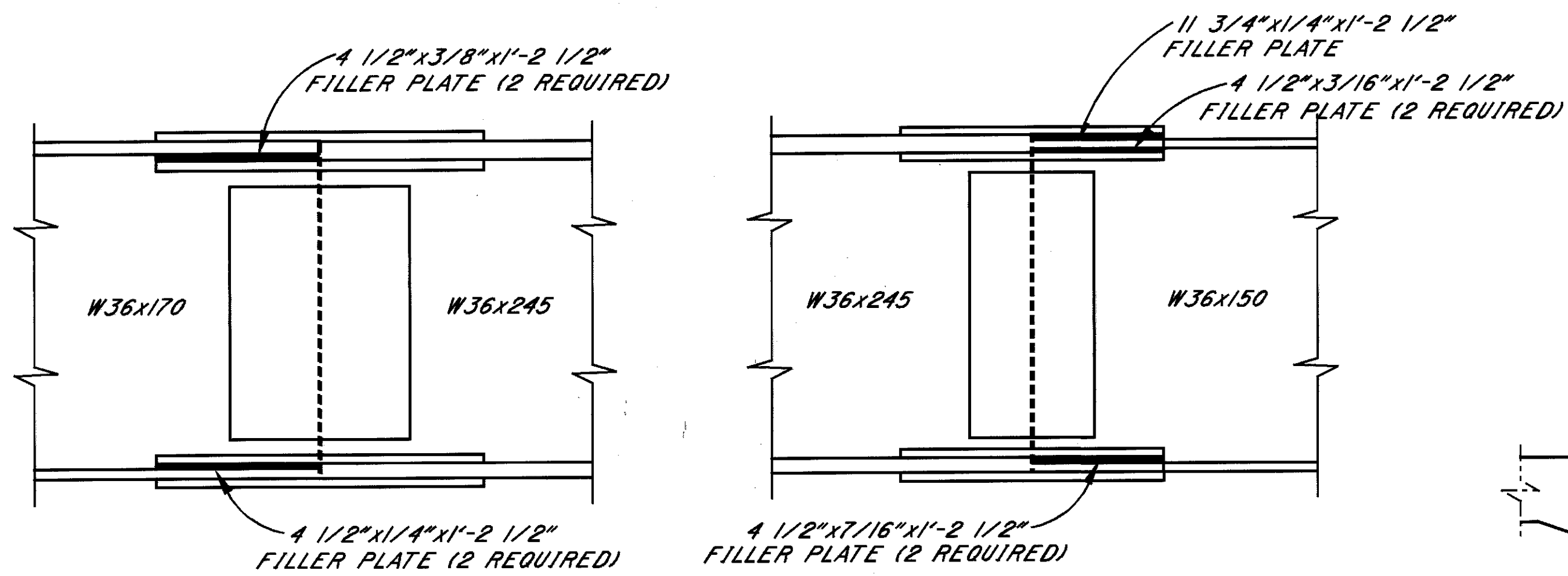
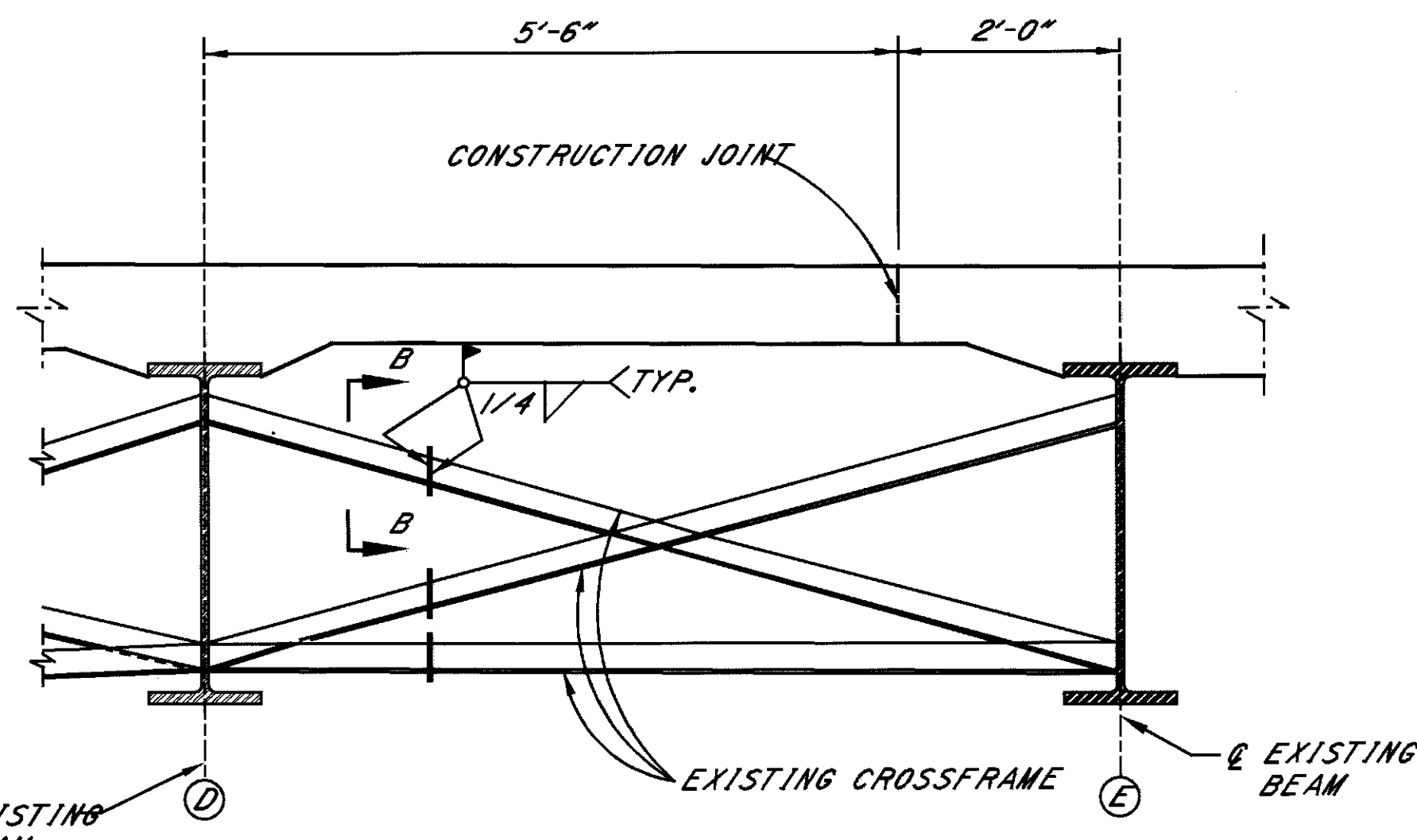


BEAMS B THRU F ELEVATION

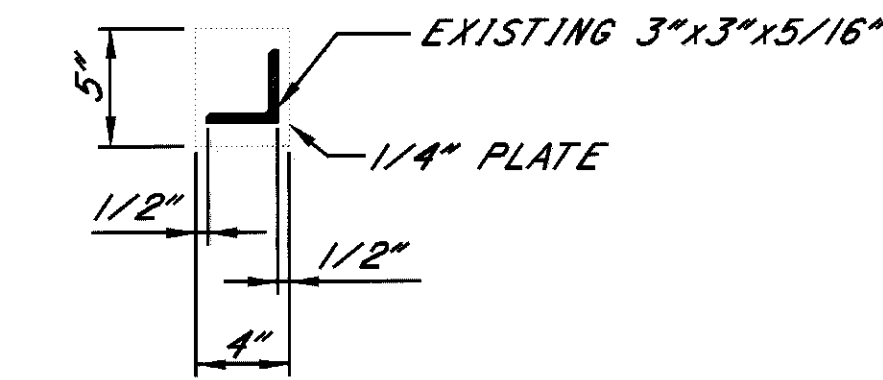


BEAM SPLICE DETAIL

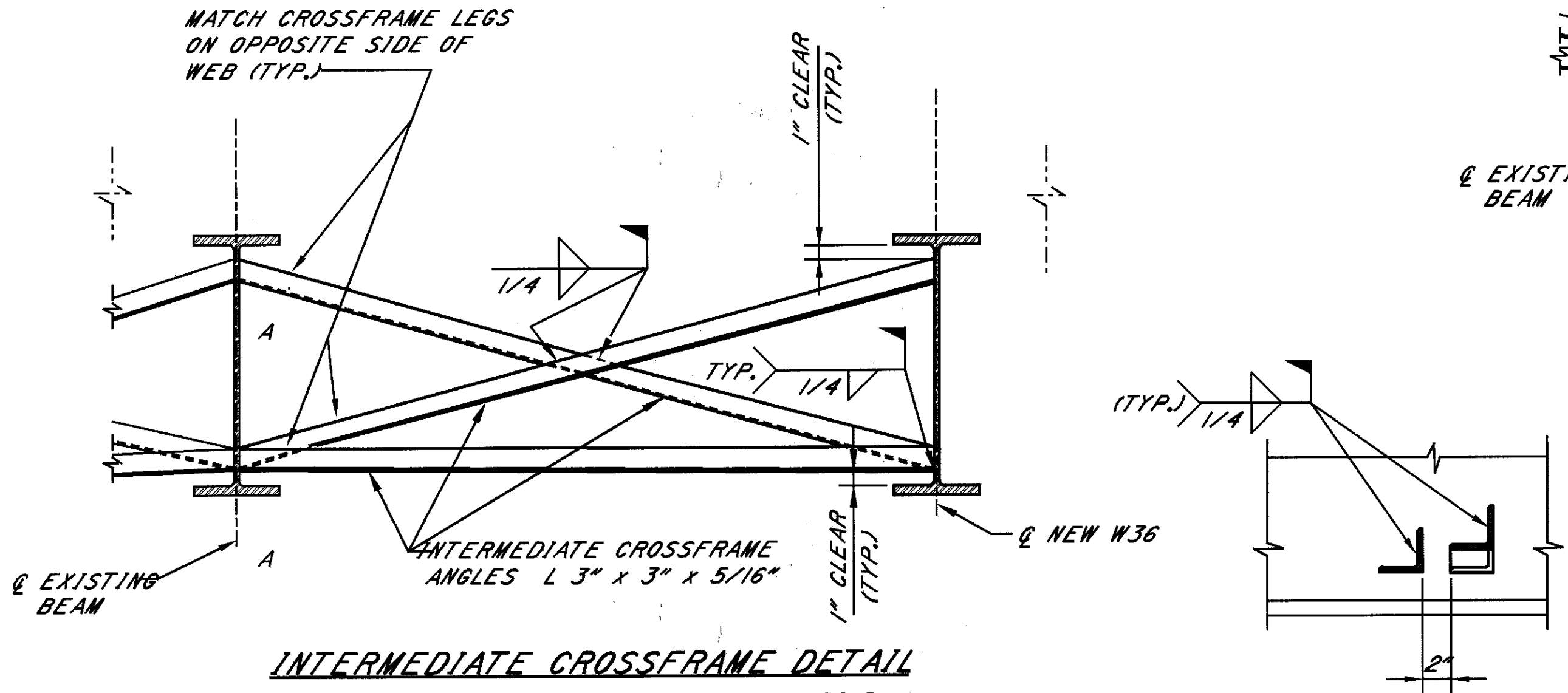


INTERMEDIATE CROSSFRAME DETAIL

(CENTRAL BAY OF END SPANS ONLY, SEE NOTE 5 ON SHEET 17/24)



SECTION B-B



INTERMEDIATE CROSSFRAME DETAIL

(RIGHT EXTERIOR BAY SHOWN, LEFT EXTERIOR BAY OPPOSITE HAND)

SECTION A-A

STEEL SHIM PLATE THICKNESS					
LOCATION	BEAM B	BEAM C	BEAM D	BEAM E	BEAM F
REAR ABUTMENT	3/4"	7/8"	5/8"	1"	1 1/4"
FORWARD ABUTMENT	1 1/8"	1 1/8"	7/8"	3/4"	1 1/4"

SEE GENERAL NOTE ON SHEET 8/24

NOTES:

- WHERE A SHAPE OR PLATE IS DESIGNATED (CVN) THE MATERIAL SHALL MEET SPECIFIED MINIMUM NOTCH TOUGHNESS REQUIREMENTS AS SPECIFIED IN 710.1.
- WELDED ATTACHMENT OF SUPPORTS FOR CONCRETE DECK FINISHING MACHINE MAY BE MADE TO AREAS OF THE FASCIA STRINGER FLANGES DESIGNATED "COMPRESSION". ATTACHMENTS SHALL NOT BE MADE TO AREAS DESIGNATED "TENSION". FILLET WELDS TO COMPRESSION FLANGES SHALL BE NOT CLOSER THAN 1" FROM EDGE OF FLANGE, BE NOT MORE THAN 2" LONG, AND BE NOT SMALLER THAN THE MINIMUM SIZE REQUIRED BY AASHTO.
- FOR PHASE CONSTRUCTION REQUIREMENTS, SEE SHEET 8/24 AND ROADWAY DRAWINGS.
- HIGH STRENGTH BOLTS SHALL BE ONE-INCH DIAMETER A325, GALVANIZED, UNLESS OTHERWISE NOTED, ALONG WITH GALVANIZED NUTS AND WASHERS.
- FOR DETAILS OF NEW END CROSSFRAMES AND NEW EXPANSION JOINTS, SEE STANDARD DRAWINGS EXJ-4-87 SHEETS 1, 2, 4 AND 5 OF 5.
- FOR BOLTED BEAM SPLICE DETAILS AND NOTES SEE SHEET 4 OF 4 STANDARD DRAWING BS-1-93.