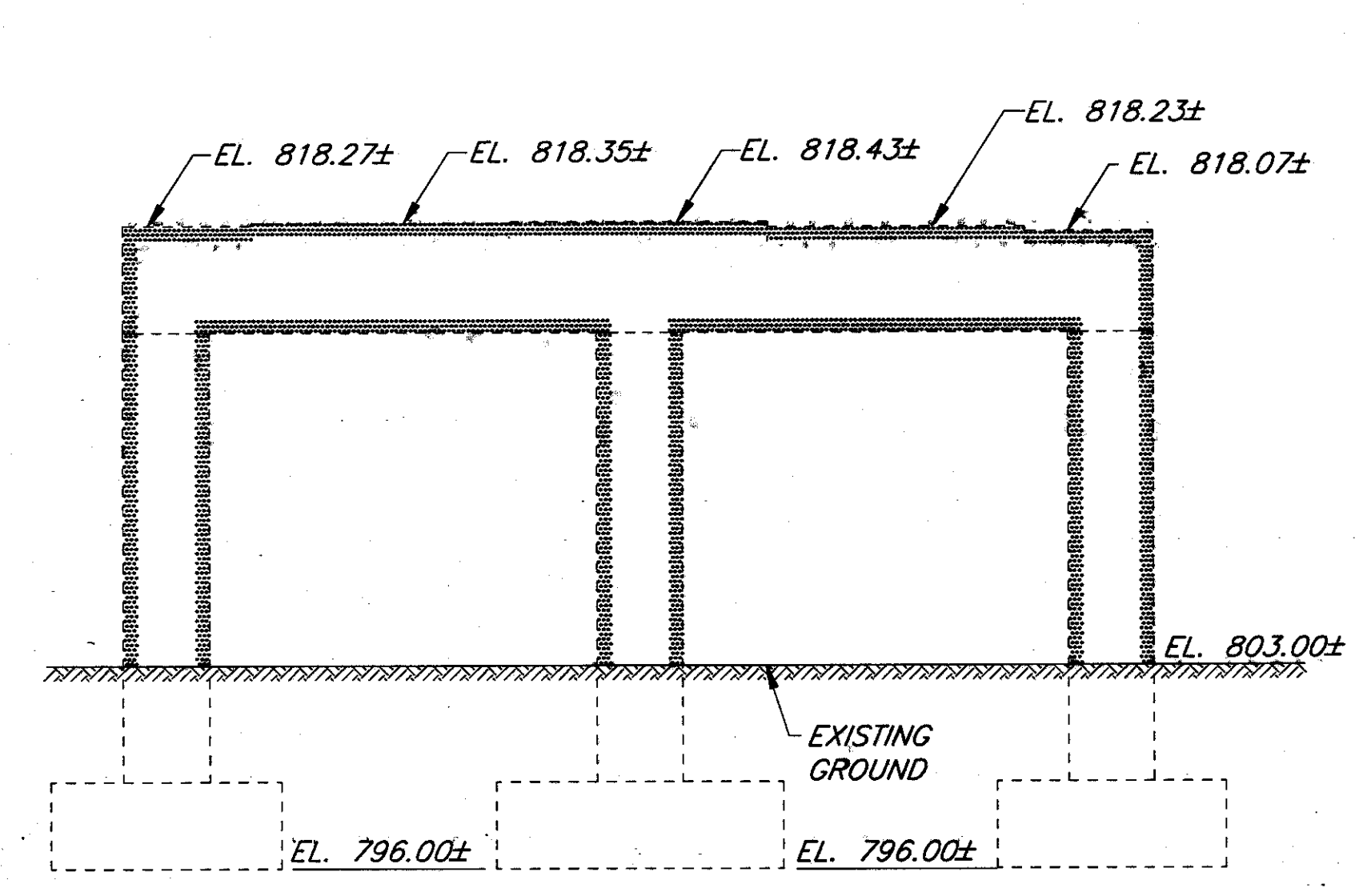
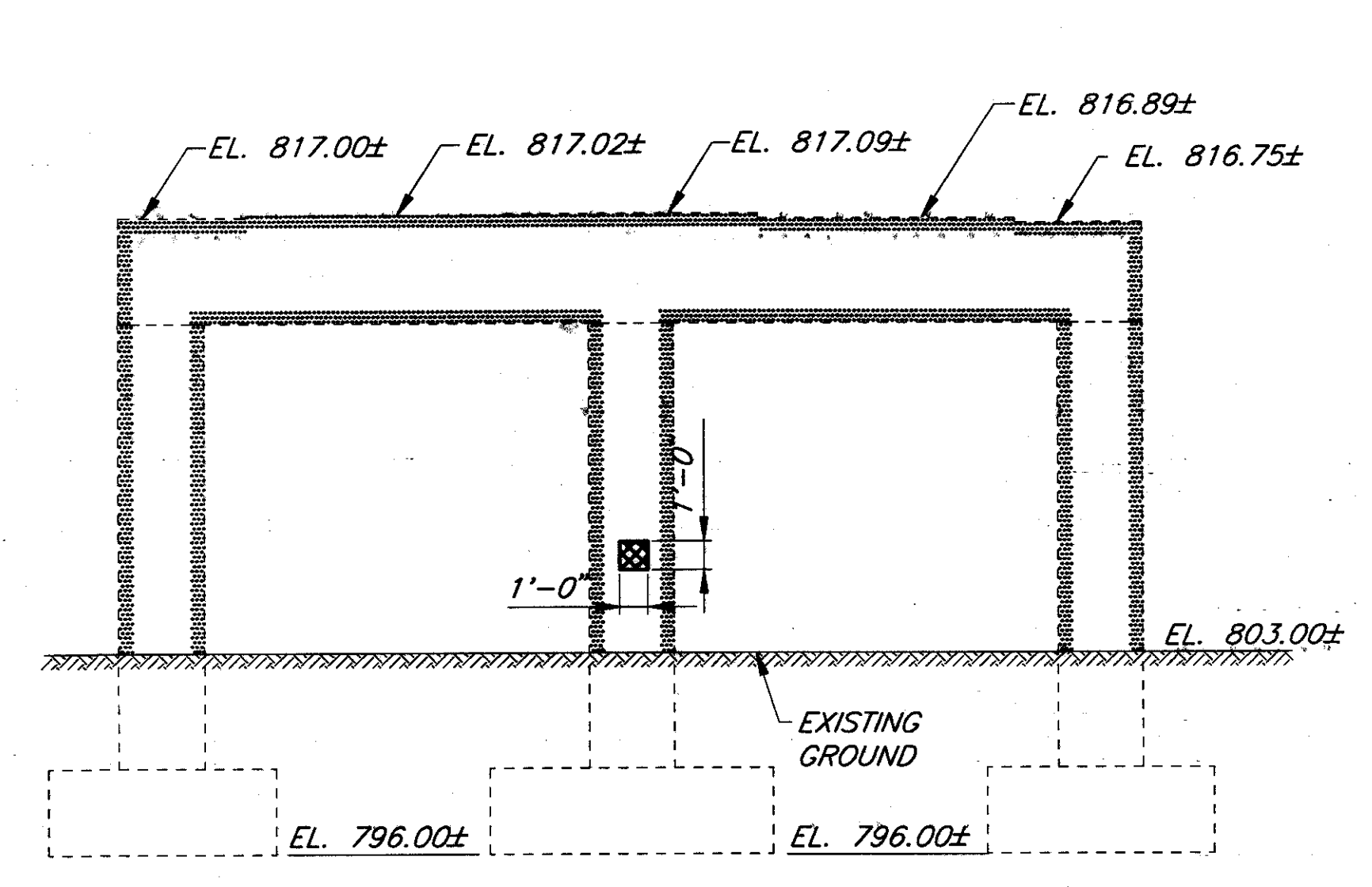


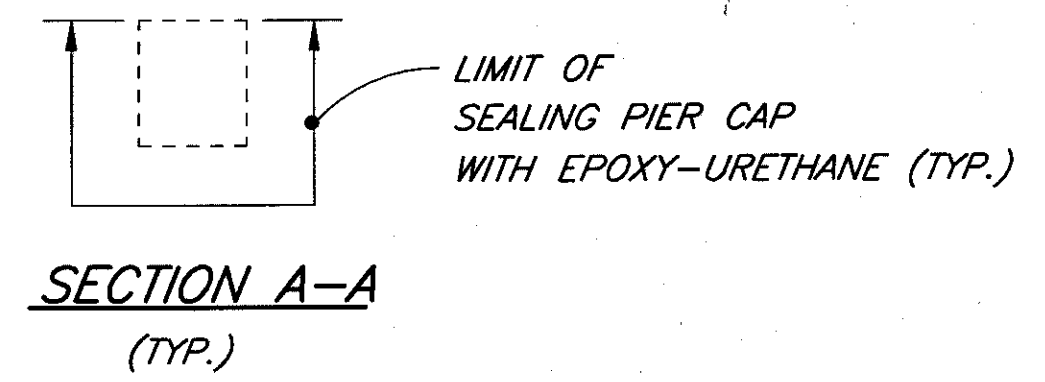
PIER 1 ELEVATION
 (LOOKING NORTH)



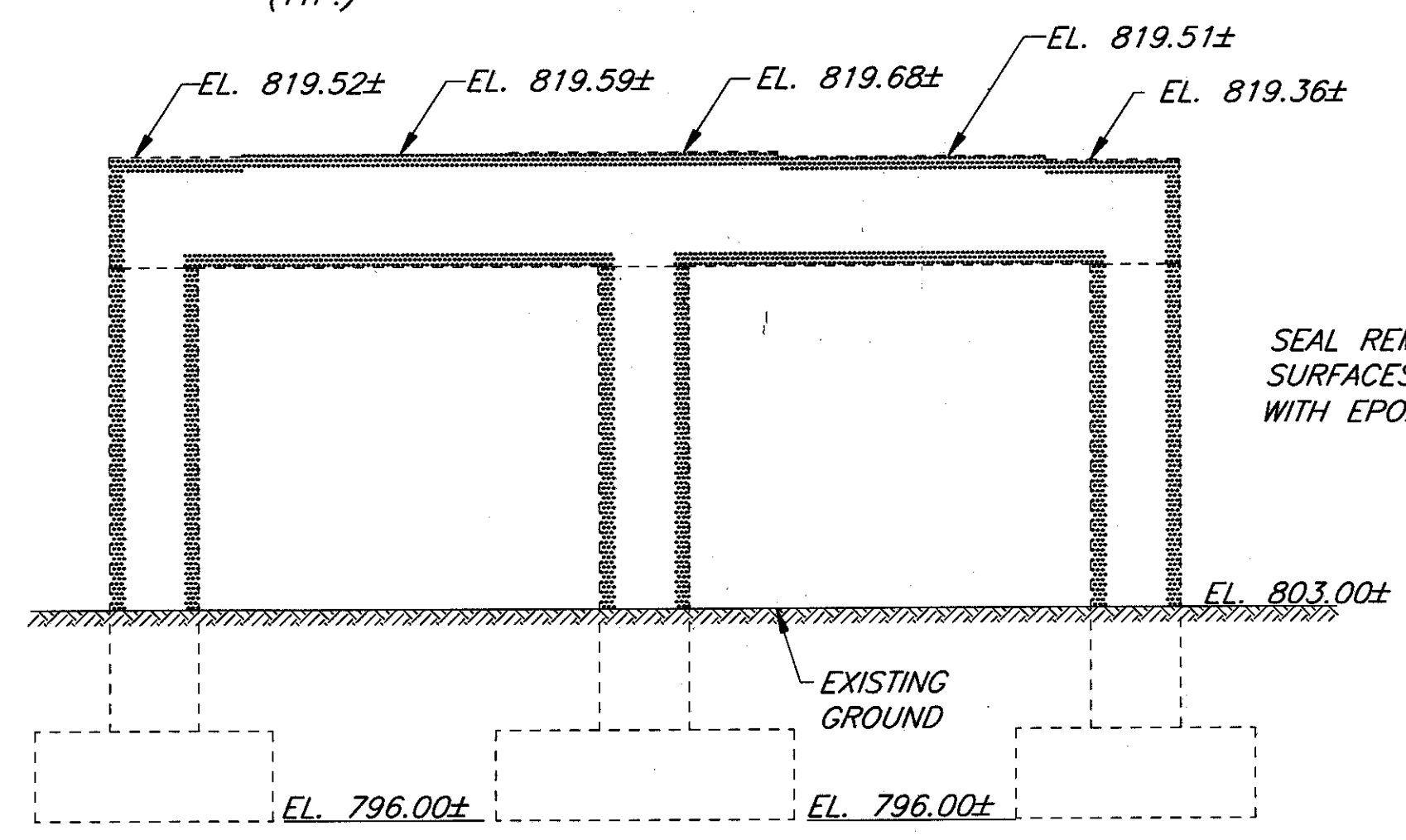
PIER 2 ELEVATION
 (LOOKING NORTH)



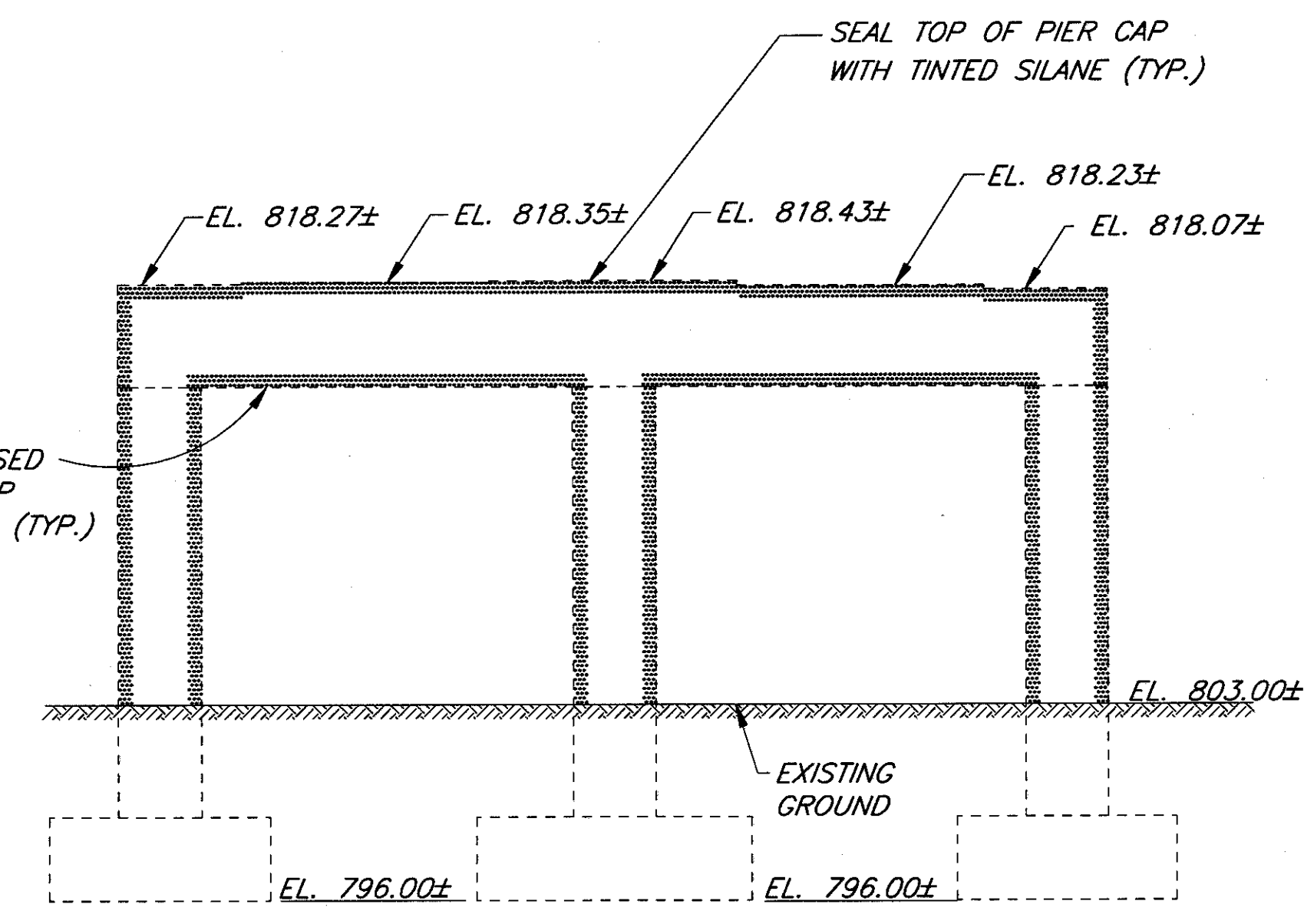
PIER 3 ELEVATION
 (LOOKING NORTH)



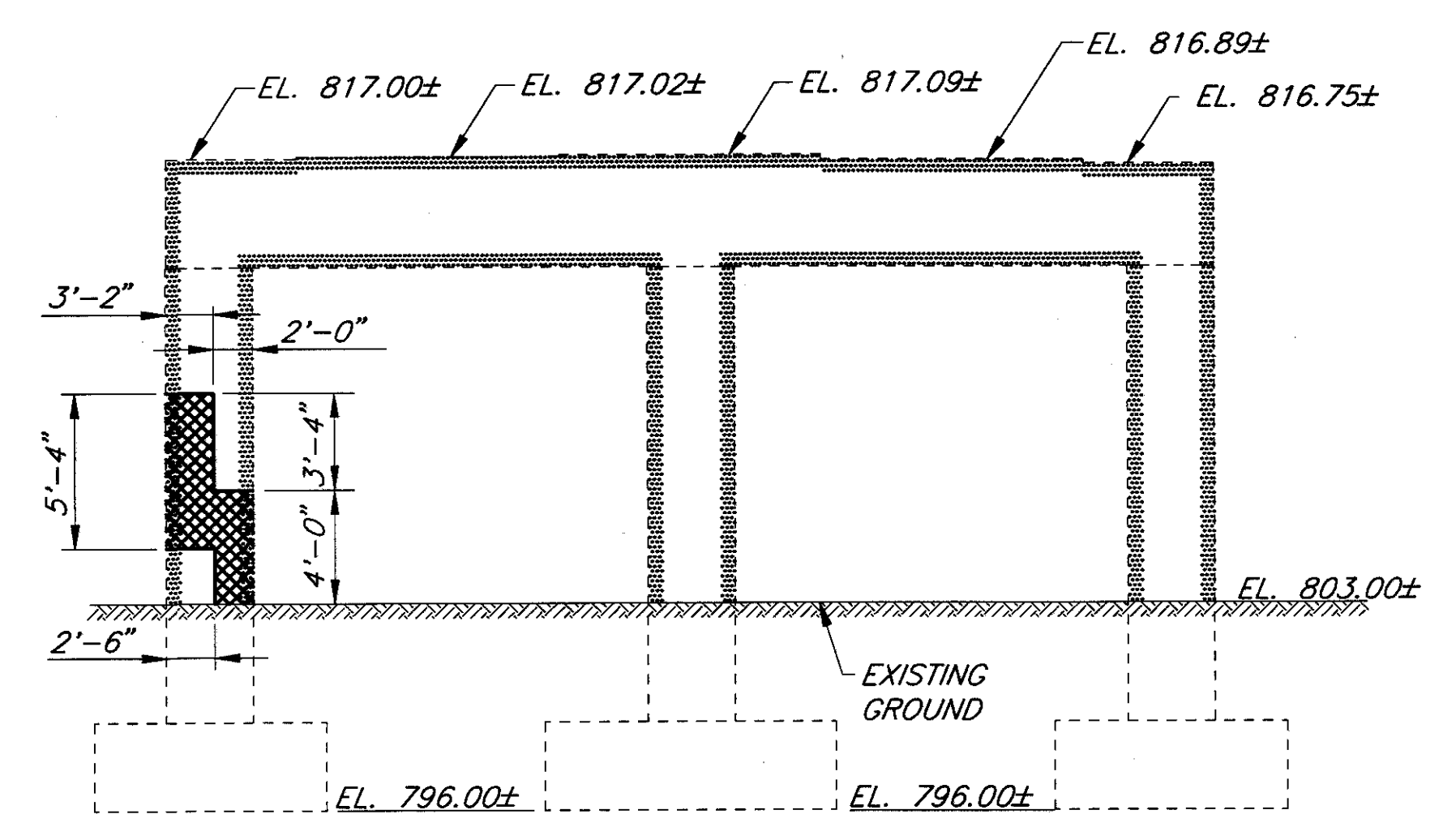
SECTION A-A
 (TYP.)



PIER 1 ELEVATION
 (LOOKING SOUTH)



PIER 2 ELEVATION
 (LOOKING SOUTH)



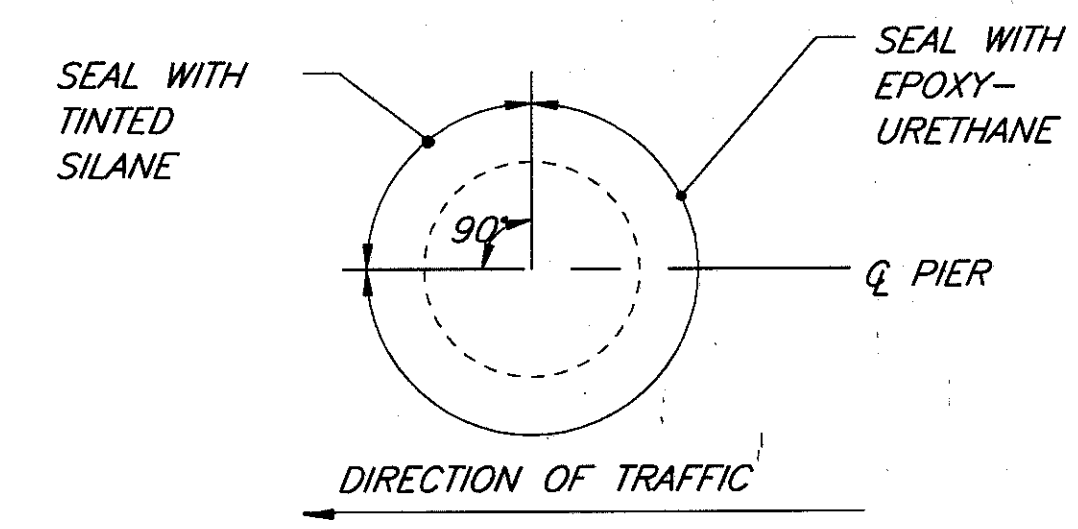
PIER 3 ELEVATION
 (LOOKING SOUTH)

LEGEND:

- SEALING OF CONCRETE SURFACES
- ITEM 843, PATCHING CONCRETE STRUCTURE WITH TROWELABLE MORTAR

NOTES:

- 1) ALL ELEVATIONS SHOWN WITH REFERENCE TO THE EXISTING PIERS ARE APPROXIMATE.
- 2) SEAL ALL EXPOSED SURFACES OF PIERS AS INDICATED AFTER COMPLETION OF PATCHING REPAIRS.
- 3) CLEANING PATCHED SURFACES: ALL SURFACES TO BE PATCHED AND THE EXPOSED REINFORCING STEEL WITHIN SHALL BE THOROUGHLY CLEANED BY ABRASIVE BLASTING PRIOR TO THE CLEANING SPECIFIED BY 519.04 AND 520.05. CLEANING SHALL PRECEDE APPLICATION OF THE PATCHING MATERIAL OR ERECTION OF THE FORMS BY NOT MORE THAN 24 HOURS.
- 4) THE FINAL PHYSICAL INVENTORY OF MEASURED QUANTITIES OF DETEIORATION WAS PERFORMED ON MARCH 28, 1996.



TYPICAL COLUMN SEALING

ITEM	DESCRIPTION	ESTIMATED QUANTITIES			
		PIERS		ABUTMENTS	
		MEASURED	ESTIMATED	MEASURED	ESTIMATED
843	PATCHING CONCRETE STRUCTURE WITH TROWELABLE MORTAR	47 SF	141 SF	12 SF	36 SF

File Name: K:\001\0007\0290\STRUCT\0290512
 Plot Scale: 1/8"=1'-0"
 Drawn By: Jone / 01-12-96 (0609)