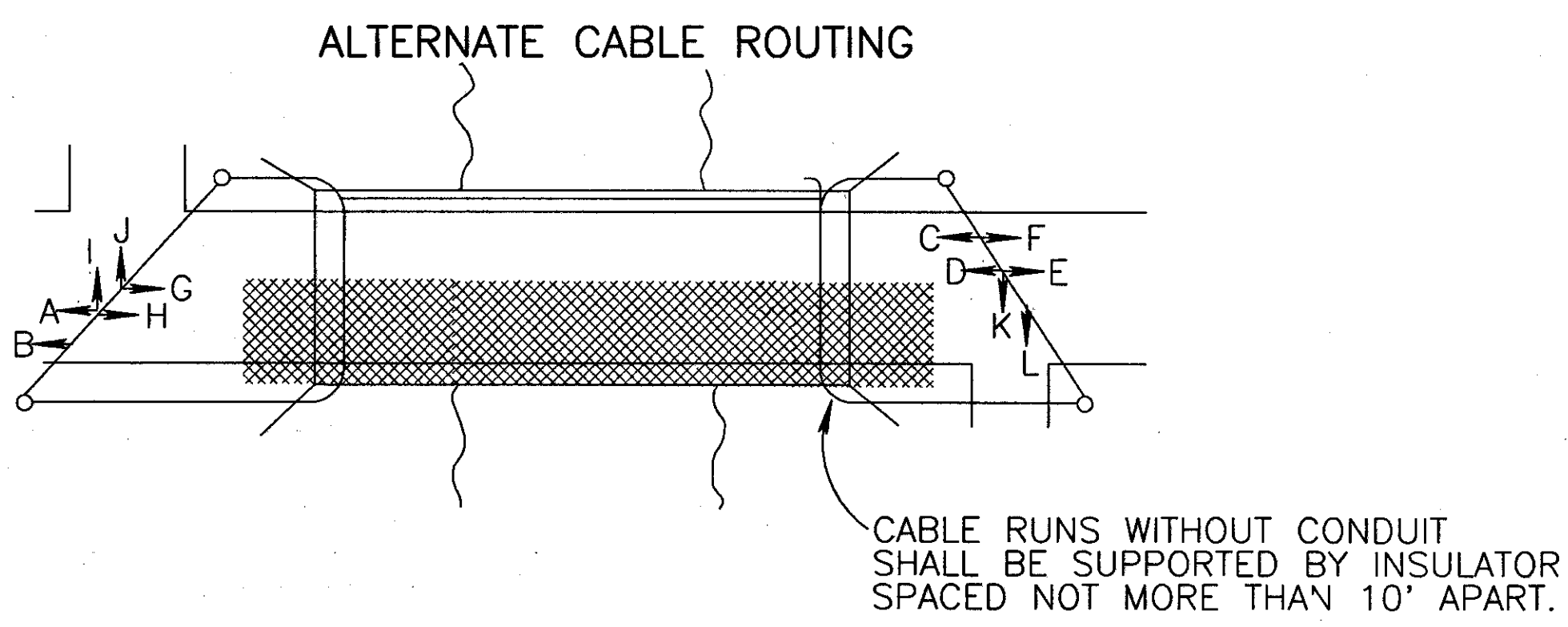


NOTE:
SIGNAL WIRE INTERCONNECT SHALL BE ACCOMPLISHED BY USE OF THE EXISTING POWER POLES AND TEMPORARY POLES OR BY ATTACHING TO THE BRIDGE STRUCTURE. TEMPORARY POLES SHALL BE PLACED AS DIRECTED BY THE ENGINEER. INTERCONNECT WIRES OVER ROADWAYS SHALL HAVE A MINIMUM CLEARANCE OF 18.5'. THE CONTRACTOR SHALL MAKE ALL NECESSARY ARRANGEMENTS TO USE THE EXISTING POWER POLES WITH THE OWNERS OF THE EXISTING POLES. ALL COSTS ASSOCIATED WITH PROVIDING, INSTALLING, MAINTAINING AND REMOVING TEMPORARY POLES SHALL BE INCLUDED IN THE LUMP SUM BID FOR ITEM 614 - MAINTAINING TRAFFIC.



SIGNAL DISPLAY CHART

SIGNAL HEAD	Ø1	Ø2	Ø3	Ø4	Ø5	Ø6	FLASHING
	R/W CLEAR	R/W CLEAR	R/W CLEAR	R/W CLEAR	R/W CLEAR	R/W CLEAR	
A	R	R	R	R	R	R	R
B	R	R	R	R	R	R	R
C	←G	←G	←G	←G	←G	←G	R
D	G	G	G	G	G	G	R
E	R	R	R	R	R	R	R
F	R	R	R	R	R	R	R
G	R	R	R	R	R	R	R
H	R	R	R	R	R	R	R
I	G	Y	R	R	R	R	R
J	G	Y	R	R	R	R	R
K	R	R	R	R	R	R	R
L	R	R	R	R	R	R	R

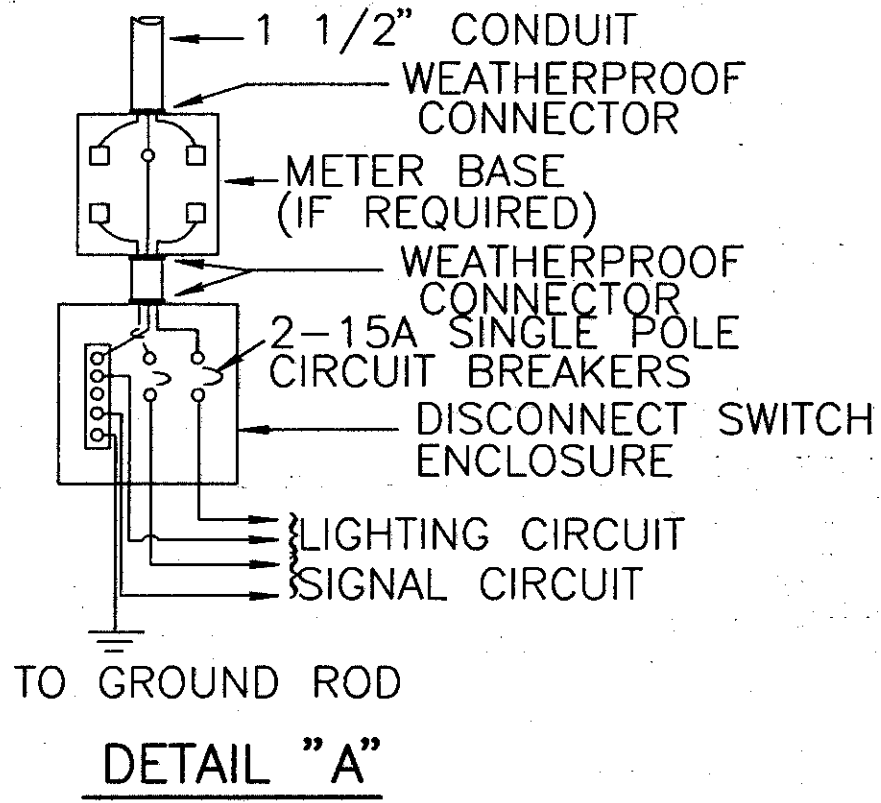
SIGNAL TIMING CHART

INTERVAL	PHASE					
	Ø1	Ø2	Ø3	Ø4	Ø5	Ø6
MIN. GREEN	10	10	29	10	10	29
EXTENSION	4	4		4	4	
GAP	3	3		3	3	
MAX. GREEN I	16	24		16	16	
MAX. GREEN II	28	28		16	28	
YELLOW	3	3	3	3	3	3
ALL RED	1	0	1	1	0	1
MEMORY	ON	ON		ON	ON	
RECALL	OFF	OFF	ON	OFF	OFF	ON

NOTE:
SIGNAL TIMING MAY BE SUBJECT TO CHANGE AS DIRECTED BY THE ENGINEER.

NOTE: USE MAX. GREEN II FROM 3PM-6PM WEEKDAYS. ALL OTHER TIMES USE MAX. GREEN I

DETAILS FOR ACTUATED SIGNALIZED CLOSING 1 LANE OF A 2 LANE HIGHWAY (8 PHASE)



Ø1, Ø2, Ø4, AND Ø5 GREEN SHALL BE ACTUATED BY DETECTORS AS SHOWN ON SHEETS 12 & 13. TIMING INITIALIZES ON PHASE ONE.