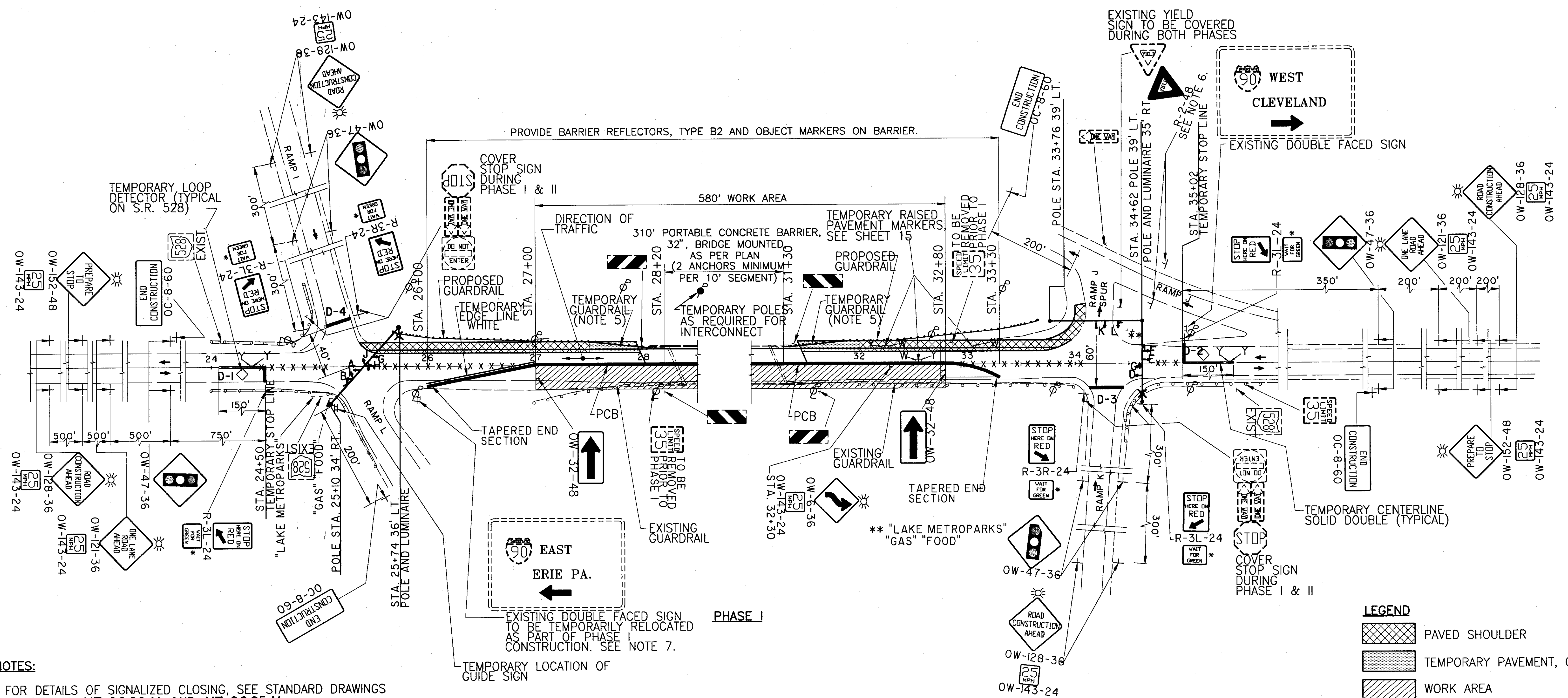


CALCULATED APG CHECKED GA

MAINTENANCE OF TRAFFIC PHASE I PLAN

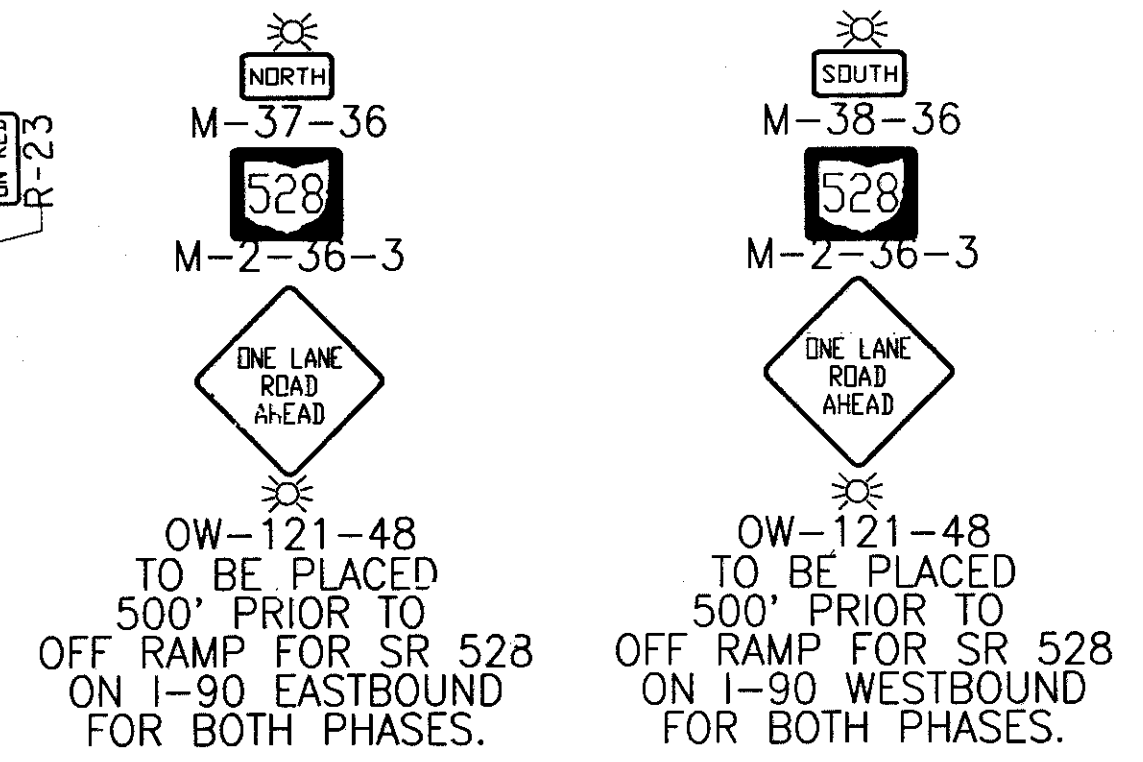
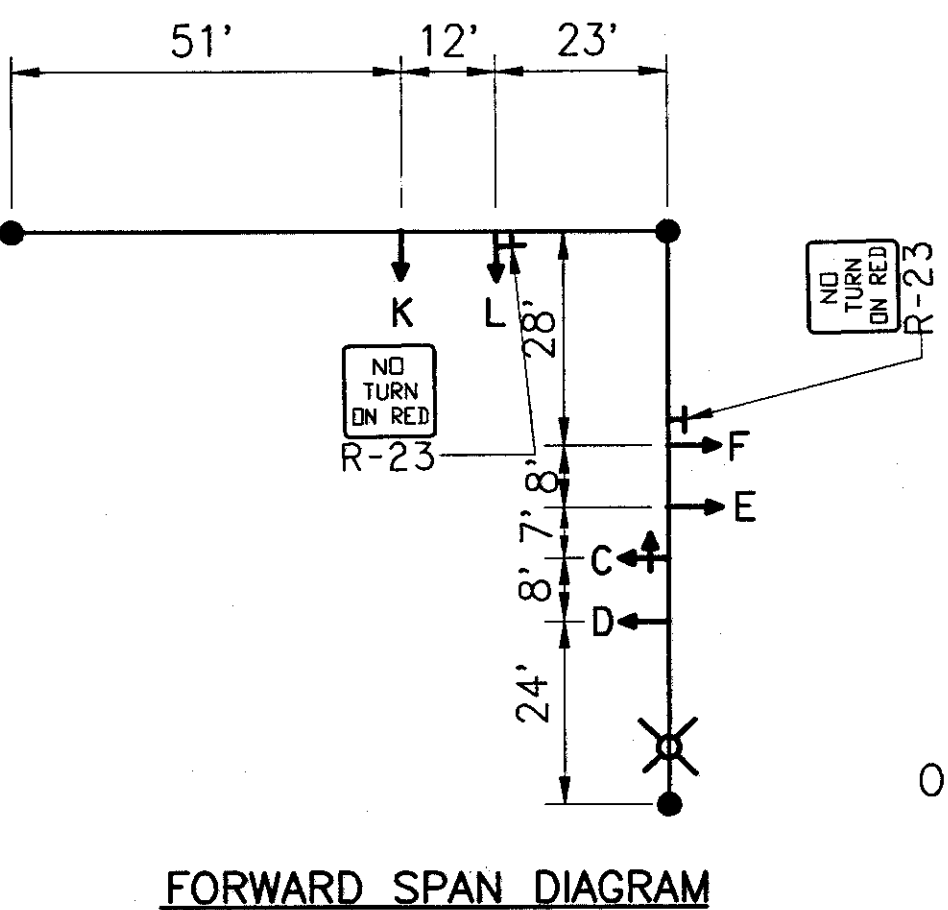
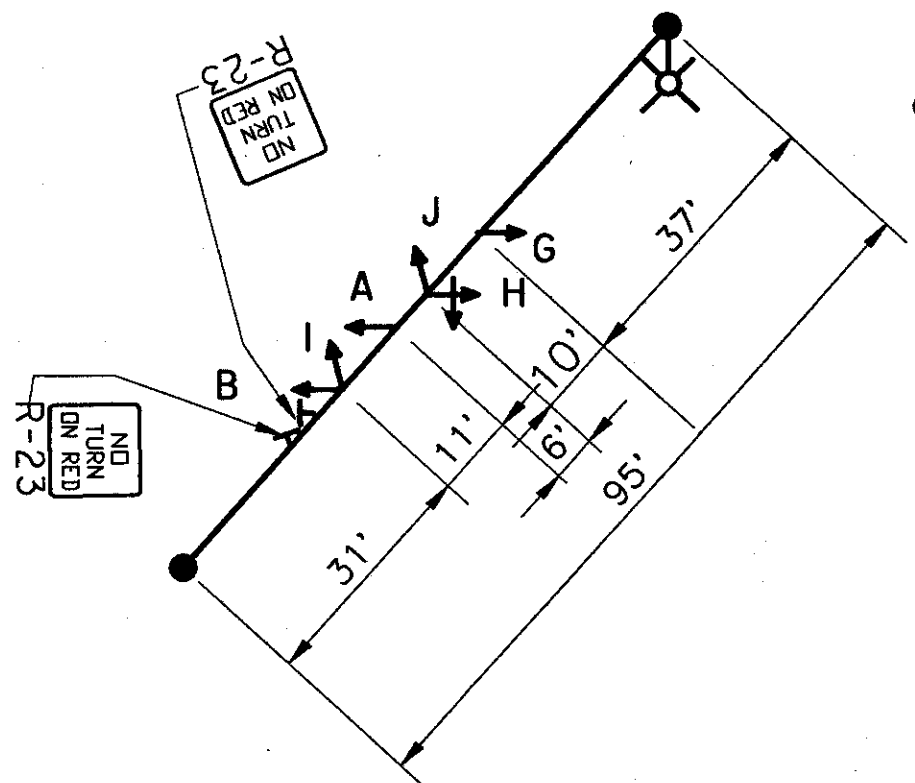
LAK-90-26.87

12 54



- NOTES:**
- FOR DETAILS OF SIGNALIZED CLOSING, SEE STANDARD DRAWINGS MT-96.11 M, MT-96.20 M AND MT-96.25 M.
 - REMOVE CONFLICTING PAVEMENT MARKINGS BETWEEN STOP LINES. A QUANTITY OF 380 LIN. FT. OF ITEM 642, REMOVAL OF PAVEMENT MARKING HAS BEEN CARRIED TO THE M.O.T. SUMMARY.
 - INITIAL TIMING FOR THE SIGNALIZED CLOSING SHALL BE AS SHOWN ON SHEET 14. FOR ADDITIONAL DETAILS SEE SHEET 14. ALL CHANGES IN SIGNAL TIMING SHALL BE APPROVED BY THE ENGINEER.
 - THE TEMPORARY SIGNALS AND LUMINAIRES WILL BE IN THE SAME POSITION FOR BOTH PHASES.
 - THE TEMPORARY GUARDRAIL SHALL HAVE A 10:1 TAPER AND SHALL CONNECT PROPOSED GUARDRAIL TO THE EXISTING BRIDGE TERMINAL ASSEMBLY. A QUANTITY OF 120 LIN. FT. OF ITEM 614, TEMPORARY GUARDRAIL HAS BEEN CARRIED TO THE M.O.T. SUMMARY.
 - PROVIDE YIELD SIGNS ALONG RAMP J AS SHOWN ABOVE.
 - REMOVE MAJOR SIGN AND REERECT AT STATION 25+15 ON THE RIGHT AS DIRECTED BY THE ENGINEER. AT COMPLETION OF PROJECT, REMOVE SIGN AT TEMPORARY LOCATION AND REERECT AT ORIGINAL LOCATION. A QUANTITY OF 2 EACH OF ITEM 630, REMOVAL OF GROUND MOUNTED SIGN AND REERECTION HAS BEEN CARRIED TO THE M.O.T. SUMMARY.

* SUPPLEMENTARY INFORMATION SIGN TO BE PLACED BENEATH THE R-3L-24 SIGN. SIGN WILL BE REFLECTORIZED WITH A WHITE BACKGROUND AND BLACK LEGEND. SIGN SIZE WILL BE 24" X 24".



- LEGEND**
- PAVED SHOULDER
 - TEMPORARY PAVEMENT, CLASS B
 - WORK AREA
 - TYPE "A" WARNING LIGHT
 - PCB PORTABLE CONCRETE BARRIER
 - MAGNETIC LOOP DETECTOR
 - EXISTING MARKINGS REMOVED
 - TRPM, WHITE, 1-WAY
 - TRPM, YELLOW, 1-WAY
 - TRPM, YELLOW, 2-WAY
 - TWO TRPM'S BACK TO BACK
 - TRAFFIC DETECTOR

SHEET CROSS REFERENCE
FOR PHASED BRIDGE CONSTRUCTION SECTION SEE SHEET 38.
FOR ADDITIONAL NOTES SEE SHEET 13.

File Name: K:\051\0007\0290\STRUCT\12035MFA
 Drawn By: Date: / 04-13-96 (14)