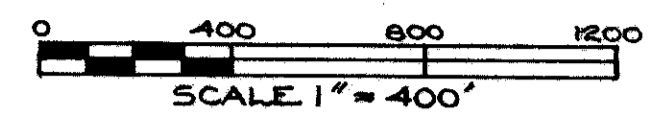
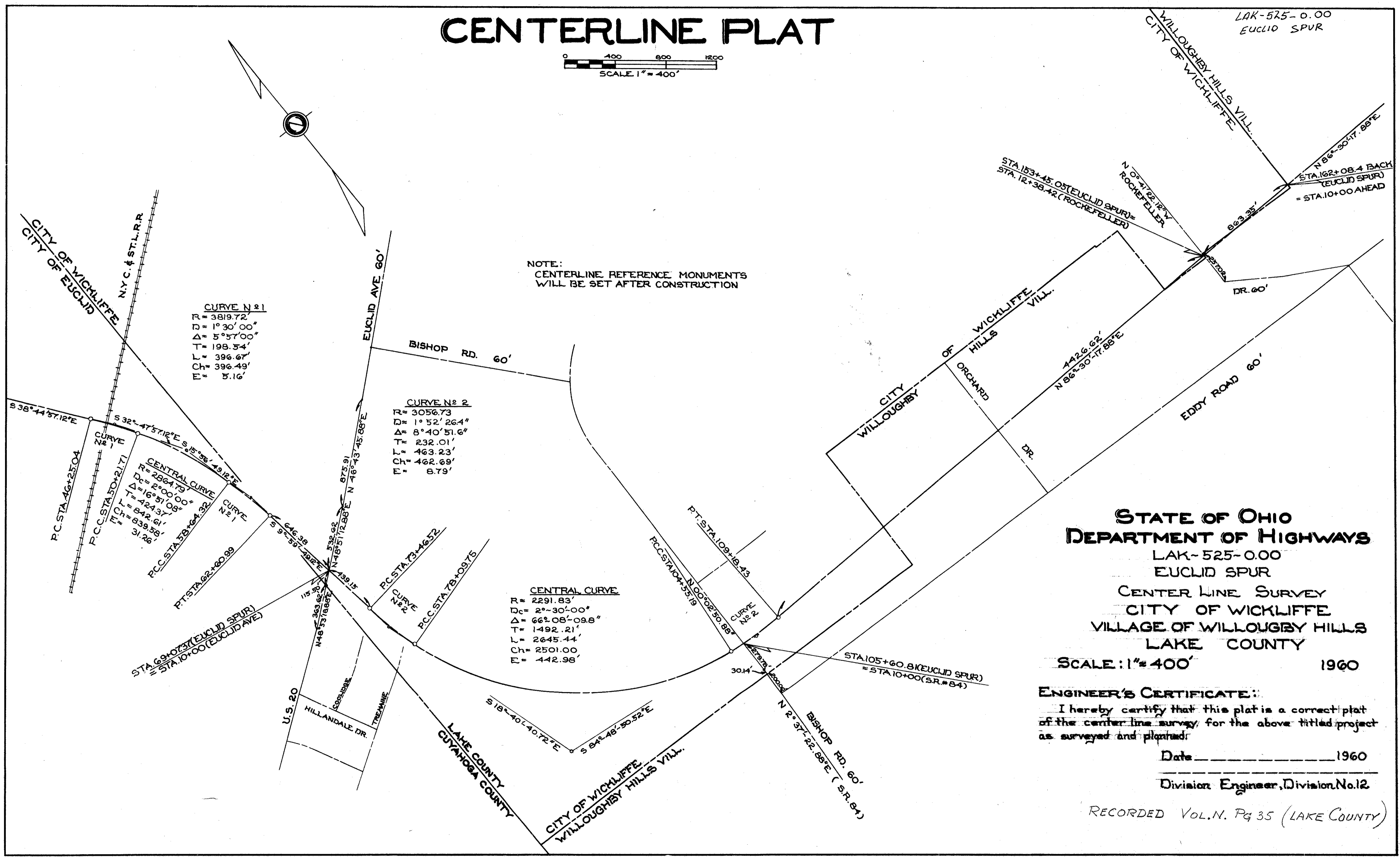


444  
S

# CENTERLINE PLAT



LAK-525-0.00  
EUCLID SPUR



NOTE:  
CENTERLINE REFERENCE MONUMENTS  
WILL BE SET AFTER CONSTRUCTION

**CURVE N° 1**  
R = 3819.72'  
D = 1° 30' 00"  
Δ = 5° 57' 00"  
T = 198.54'  
L = 396.67'  
CH = 396.49'  
E = 5.16'

**CURVE N° 2**  
R = 3056.73'  
D = 1° 52' 26.4"  
Δ = 8° 40' 51.6"  
T = 232.01'  
L = 463.23'  
CH = 462.69'  
E = 8.79'

**CENTRAL CURVE**  
R = 2291.83'  
Dc = 2° 30' 00"  
Δ = 66° 08' 09.8"  
T = 1492.21'  
L = 2645.44'  
CH = 2501.00'  
E = 442.98'

**CENTRAL CURVE**  
R = 2864.79'  
Dc = 2° 00' 00"  
Δ = 16° 51' 09.5"  
T = 424.37'  
L = 842.61'  
CH = 839.59'  
E = 31.26'

STATE OF OHIO  
DEPARTMENT OF HIGHWAYS  
LAK-525-0.00  
EUCLID SPUR  
CENTER LINE SURVEY  
CITY OF WICKLIFFE  
VILLAGE OF WILLOUGHBY HILLS  
LAKE COUNTY

SCALE: 1" = 400' 1960

**ENGINEER'S CERTIFICATE:**  
I hereby certify that this plat is a correct plat  
of the center line survey for the above titled project  
as surveyed and planned.

Date \_\_\_\_\_ 1960

Division Engineer, Division No. 12

RECORDED VOL. N. PG 35 (LAKE COUNTY)