

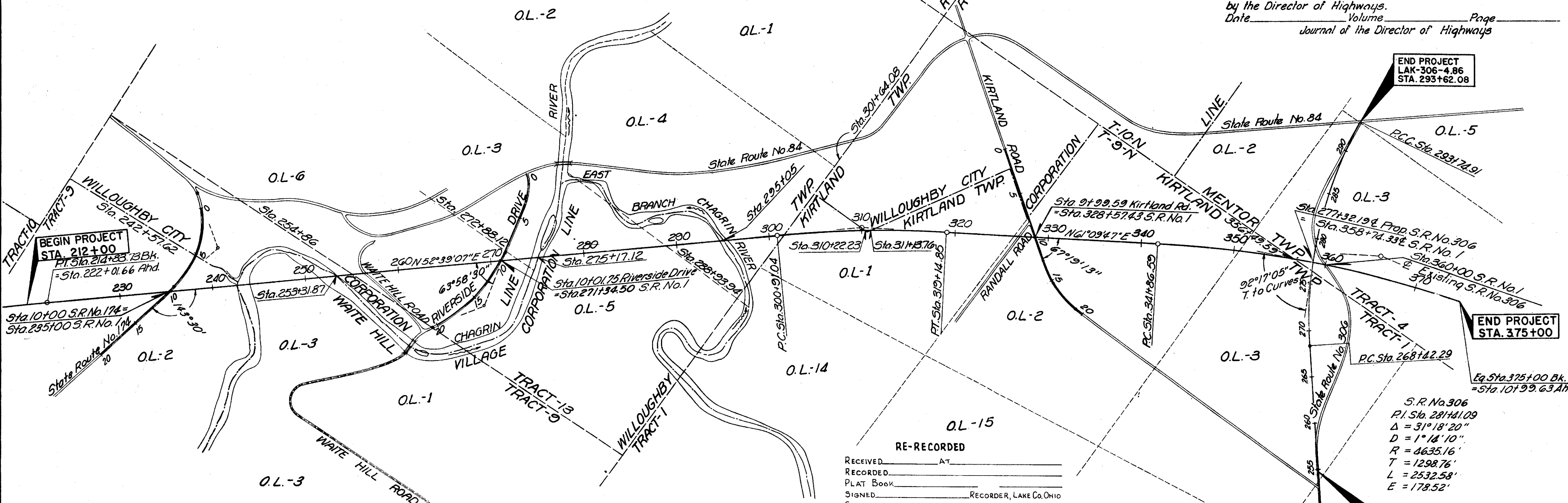
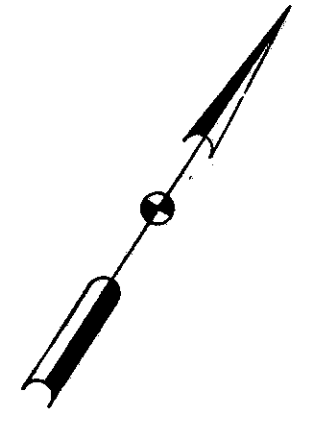
# CENTERLINE PLAT

314  
333

STATE OF OHIO-DEPARTMENT OF HIGHWAYS  
**LAK-1-4.02**  
 KIRTLAND AND MENTOR TOWNSHIPS  
 VILLAGE OF WILLOUGHBY HILLS AND WAITE HILL VILLAGE  
 CITY OF WILLOUGHBY  
 LAKE COUNTY

R/W  
1 of 22

LAKE COUNTY, OHIO  
 Received \_\_\_\_\_ at \_\_\_\_\_  
 Recorded \_\_\_\_\_  
 Plat Book M Page 82  
 Signed \_\_\_\_\_ Recorder Lake County, Ohio  
 Fee \_\_\_\_\_  
 Signed \_\_\_\_\_ Right of Way Engineer, Interstate Projects  
 Date \_\_\_\_\_  
 Location and Limited Access Approved and Journalized  
 by the Director of Highways.  
 Date \_\_\_\_\_ Volume \_\_\_\_\_ Page \_\_\_\_\_  
 Journal of the Director of Highways



BEGIN PROJECT  
 STA. 212+00  
 P.I. Sta. 214+33.88 Bk.  
 = Sta. 222+01.66 Ahd.

END PROJECT  
 LAK-306-4.86  
 STA. 293+62.08

END PROJECT  
 STA. 375+00

Eq. Sta. 375+00 Bk.  
 = Sta. 101+99.63 Ahd.

BEGIN PROJECT  
 LAK-306-4.86  
 STA. 254+75

S.R. No. 306  
 P.I. Sta. 281+41.09  
 $\Delta = 31^{\circ}18'20''$   
 $D = 1^{\circ}18'10''$   
 $R = 4635.16'$   
 $T = 1298.76'$   
 $L = 2532.58'$   
 $E = 178.52'$

STATE HIGHWAY NO. 1 CENTERLINE MONUMENTS

P.C. STA. 212+00	P.T. STA. 228+01.66
P.O.T. STA. 228+00	" " " 245+00
" " " 253+00	" " " 261+00
" " " 269+00	" " " 277+00
" " " 285+00	" " " 293+00
P.C. STA. 300+91.04	P.O.C. STA. 310+00
P.I. STA. 310+04.63	

SIDE ROAD CENTERLINE MONUMENTS

KIRTLAND ROAD	P.T. STA. 7+41.92
" "	T.S. STA. 12+73.63
" "	P.I. STA. 14+40.50
" "	S.G. STA. 15+23.63
STATE RTE. 306	P.O.T. STA. 25+47.5
" "	" " " 26+100
" "	P.G. STA. 268+42.29
" "	P.O.C. STA. 275+00
" "	P.I. STA. 281+41.09
" "	P.O.C. STA. 284+00
" "	P.C.C. STA. 293+74.91

S.R. No. 1  
 P.I. Sta. 209+80.52  
 $\Delta = 1^{\circ}30'35''$  Lt.  
 $D = 0^{\circ}09'$   
 $R = 38,197.19'$   
 $T = 503.27'$   
 $L = 1006.48'$   
 $E = 3.32'$   
 P.C. Sta. 204+77.25

S.R. No. 1  
 P.I. Sta. 310+04.63  
 $\Delta = 8^{\circ}30'40''$  Rt.  
 $D = 0^{\circ}28'$   
 $R = 12,277.67'$   
 $T = 913.59'$   
 $L = 1,823.81'$   
 $E = 33.94'$

S.R. No. 1  
 P.I. Sta. 365+79.77  
 $\Delta = 22^{\circ}03'35''$  Rt.  
 $D = 0^{\circ}28'00''$   
 $R = 12,277.67'$   
 $T = 2,393.18'$   
 $L = 4,727.08'$   
 $E = 231.06'$   
 P.T. Sta. 25+13.30

RE-RECORDED  
 RECEIVED \_\_\_\_\_ AT \_\_\_\_\_  
 RECORDED \_\_\_\_\_  
 PLAT BOOK \_\_\_\_\_  
 SIGNED \_\_\_\_\_ RECORDER, LAKE CO. OHIO  
 FEE \_\_\_\_\_  
 SIGNED \_\_\_\_\_  
 DATE \_\_\_\_\_  
 RIGHT OF WAY ENGINEER-INTERSTATE PROJECTS

MICHAEL BAKER, JR., CONSULTING ENGINEERS ROCHESTER, PENNSYLVANIA					
DATE: 3-23-59					
STATE OF OHIO DEPARTMENT OF HIGHWAYS RIGHT OF WAY PLANS STATE HIGHWAY NO. 1 C-44 CENTERLINE PLAT					
Designed	Drawn	Traced	Checked	Reviewed Date	Revised
R.G.	K.A. R.B.P.	K.A.	B.P.		