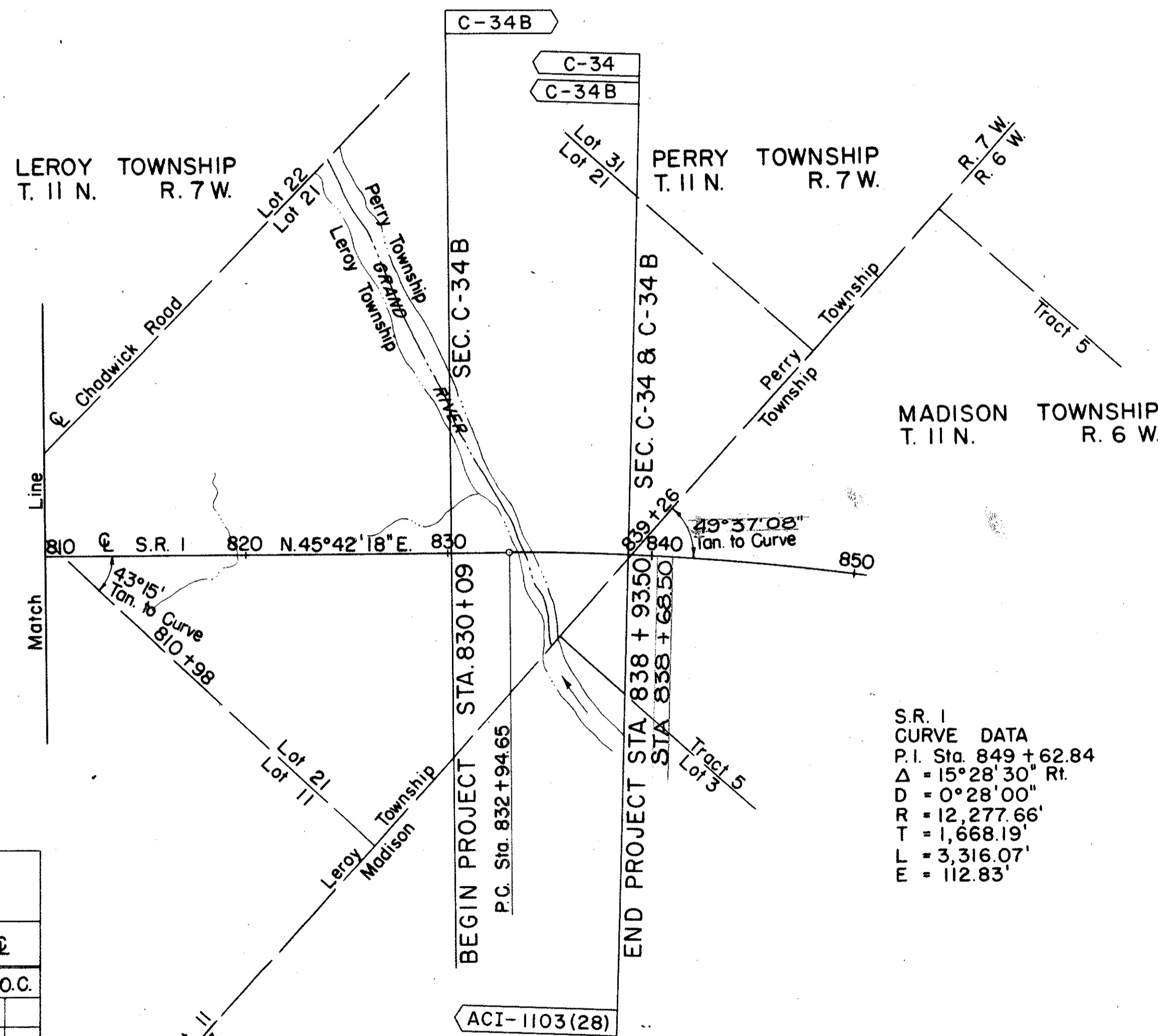
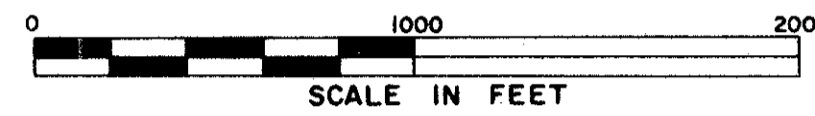
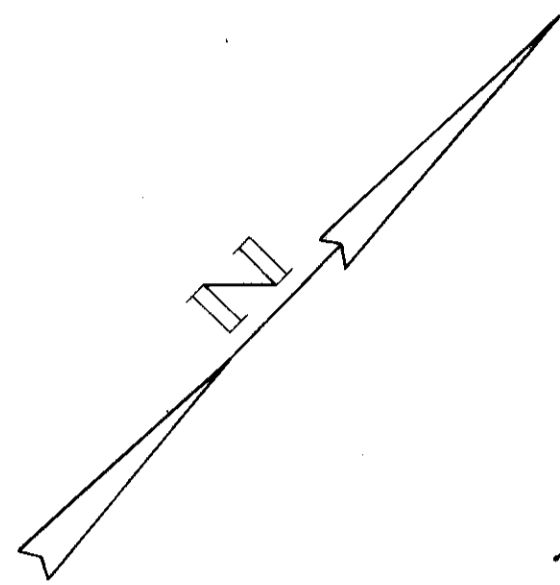


LOCATION PLAN

LAK-1-20.03 & LAK-1-22.43

LEROY, PERRY & MADISON TOWNSHIPS

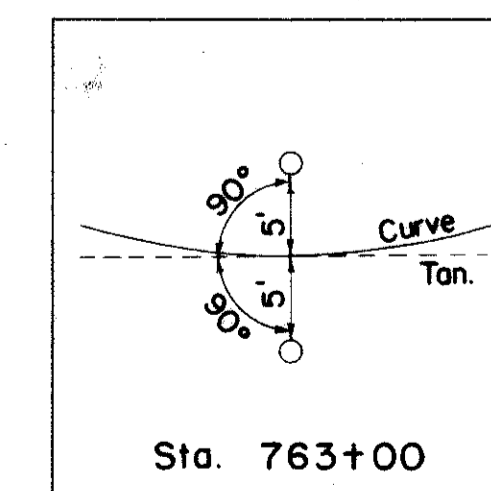
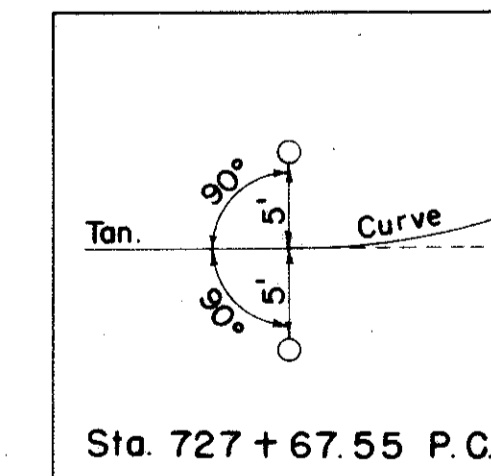
LAKE COUNTY



S.R. 1
 CURVE DATA
 P.I. Sta. 849 + 62.84
 $\Delta = 15^{\circ}28'30''$ Rt.
 $D = 0^{\circ}28'00''$
 $R = 12,277.66'$
 $T = 1,668.19'$
 $L = 3,316.07'$
 $E = 112.83'$

MONUMENTS TO BE SET AFTER CONSTRUCTION			
STATION	℄	STATION	℄
704 + 00	P.O.T.	772 + 00	P.O.C.
712 + 00		781 + 00	
720 + 00		790 + 00	
727 + 67.55 P.C.	Offset	799 + 13.98 P.T.	P.O.T.
736 + 00	P.O.C.	808 + 00	
746 + 00		816 + 00	
754 + 50		824 + 00	
763 + 00	Offset		

CENTERLINE REFERENCE MONUMENTS



Received 6/19/58 Time 08:03 AM 202
211
 Recorded 6/19/58
 Plat Book M Page 42
 Signed D.G. Jenkins Recorder, Lake County, Ohio
 Fee 10.20 Paid _____ 2
11

Signed John Burrell
 Right of Way Engineer, Interstate Projects

Date _____
 Signed Robert E. Smith
 Robert E. Smith P.E. No. 18042
 Partner - Capitol Engineering Associates

Date _____
 Location and Limited Access approved and Journalized by the
 Director of Highways.
 Date September 10, 1957 Volume 402 Page 805
 in the Director of Highways Journal.

