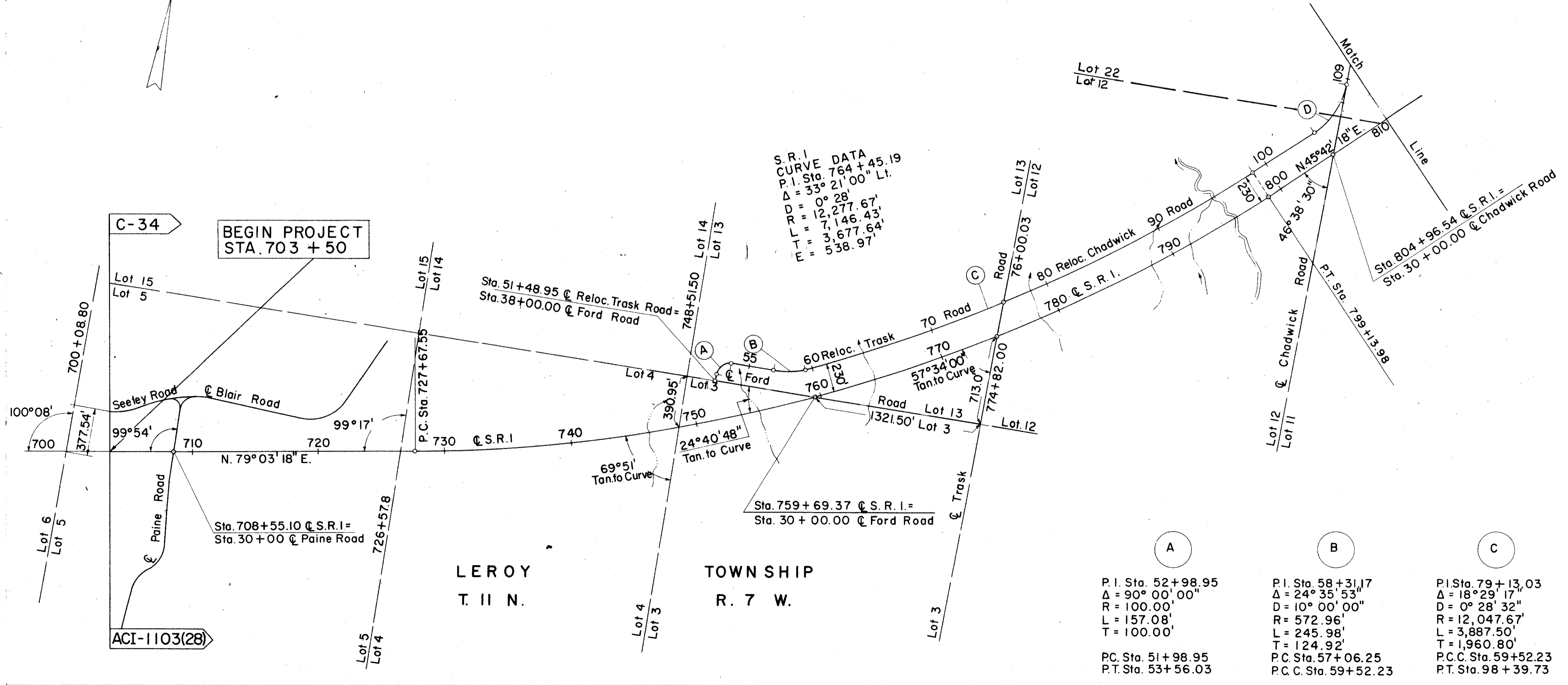
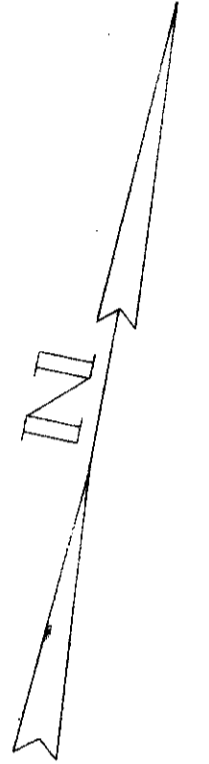
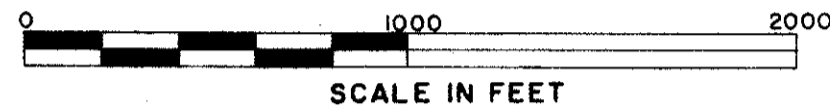


LOCATION PLAN

LAK-1-20.03 & LAK-1-22.43

LEROY, PERRY & MADISON TOWNSHIPS

LAKE COUNTY



S.R. I
CURVE DATA
P.I. Sta. 764+45.19
 $\Delta = 33^\circ 21' 00''$ Lt.
 $D = 0^\circ 28'$
 $R = 12,277.67'$
 $L = 7,146.43'$
 $T = 3,677.64'$
 $E = 538.97'$

A	B	C	D
P.I. Sta. 52+98.95 $\Delta = 90^\circ 00' 00''$ $R = 100.00'$ $L = 157.08'$ $T = 100.00'$	P.I. Sta. 58+31.17 $\Delta = 24^\circ 35' 53''$ $D = 10^\circ 00' 00''$ $R = 572.96'$ $L = 245.98'$ $T = 124.92'$	P.I. Sta. 79+13.03 $\Delta = 18^\circ 29' 17''$ $D = 0^\circ 28' 32''$ $R = 12,047.67'$ $L = 3,887.50'$ $T = 1,960.80'$	P.I. Sta. 106+39.47 $\Delta = 46^\circ 38' 30''$ $D = 10^\circ 00' 00''$ $R = 572.96'$ $L = 466.42'$ $T = 247.00'$
PC. Sta. 51+98.95 PT. Sta. 53+56.03	PC. Sta. 57+06.25 P.C. Sta. 59+52.23	P.C. Sta. 59+52.23 PT. Sta. 98+39.73	PC. Sta. 103+92.47 PT. Sta. 108+58.89

Received 6/19/58 Time 09:03 AM 201
211

Recorded 6/19/58

Plat Book M Page 42

Signed D.G. Jenkins Recorder, Lake County, Ohio 1
11

Fee 10.80 Paid

Signed John Russell
Right of Way Engineer, Interstate Projects

Date _____

Signed Robert E. Smith
Robert E. Smith P.E. No. 18042
Partner - Capitol Engineering Associates

Date _____

Location and Limited Access approved and Journalized by the
Director of Highways.
Date September 10, 1957 Volume 402 Page 805
in the Director of Highways Journal.

