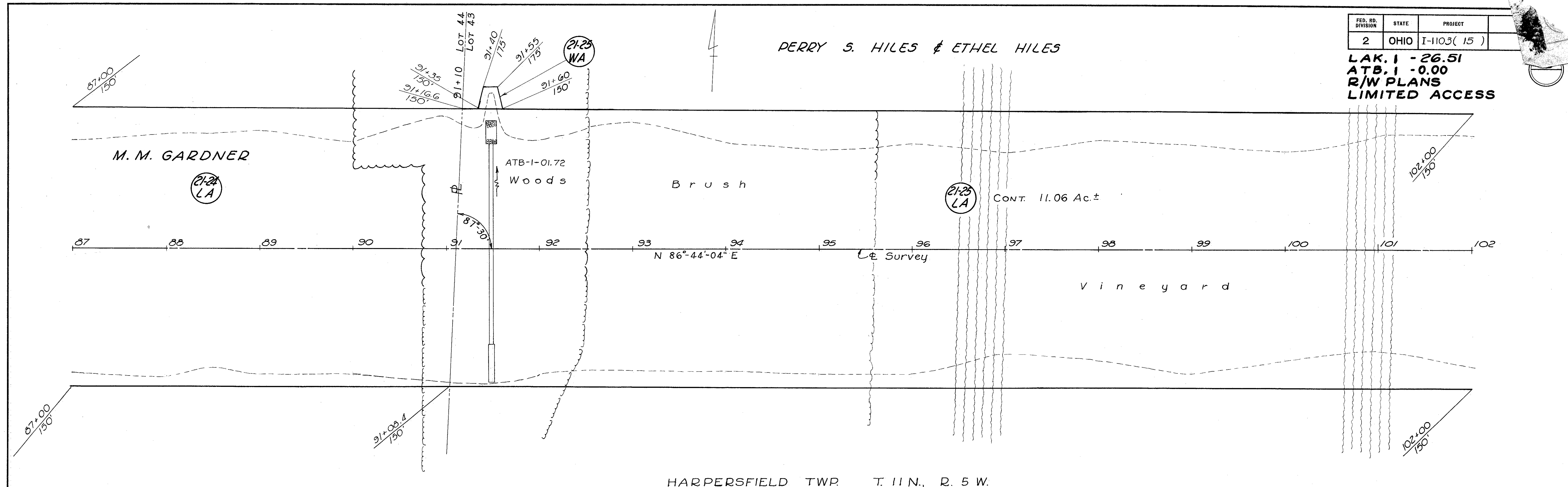


FED. RD. DIVISION	STATE	PROJECT
2	OHIO	I-1103(15)

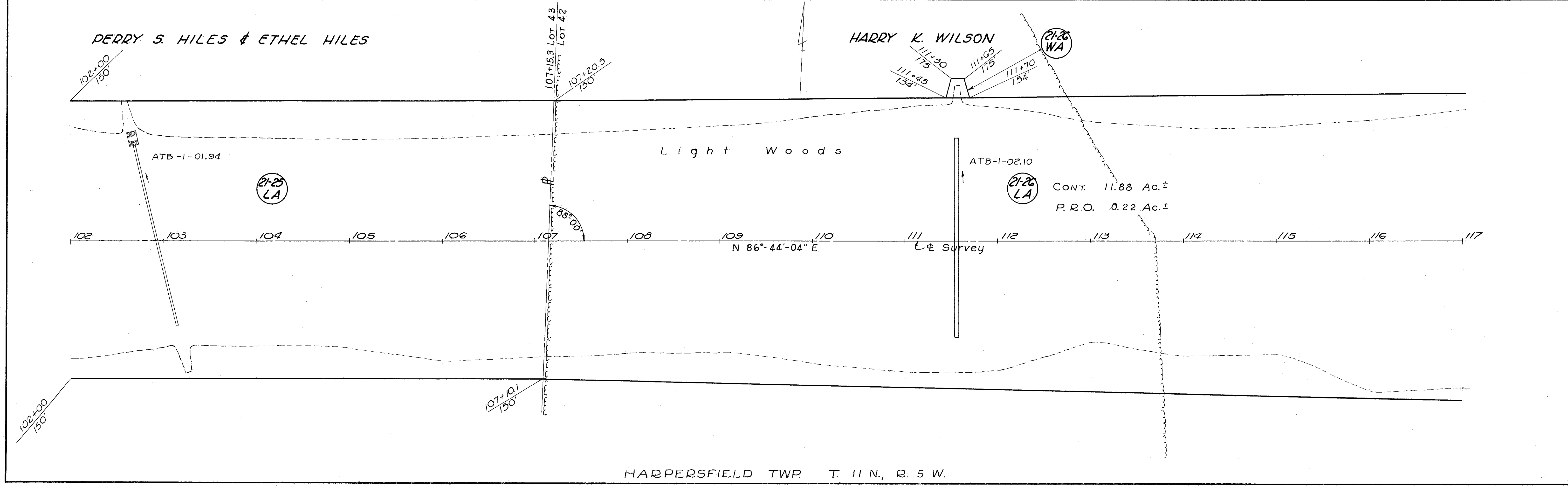
LAK. 1 - 26.51  
 ATB. 1 - 0.00  
 R/W PLANS  
 LIMITED ACCESS

PERRY S. HILES & ETHEL HILES



HARPERSFIELD TWP. T. 11 N., R. 5 W.

HARRY K. WILSON



HARPERSFIELD TWP. T. 11 N., R. 5 W.