

MADISON TWP
LAKE CO.

HARPERSFIELD TWP.
ASHTABULA CO.

P.I. = 5+00.08
Δ = 16°-37'-53" Lt.
D = 0°-28'
R = 12,277.67
T = 1794.52
L = 3563.86
E = 130.45

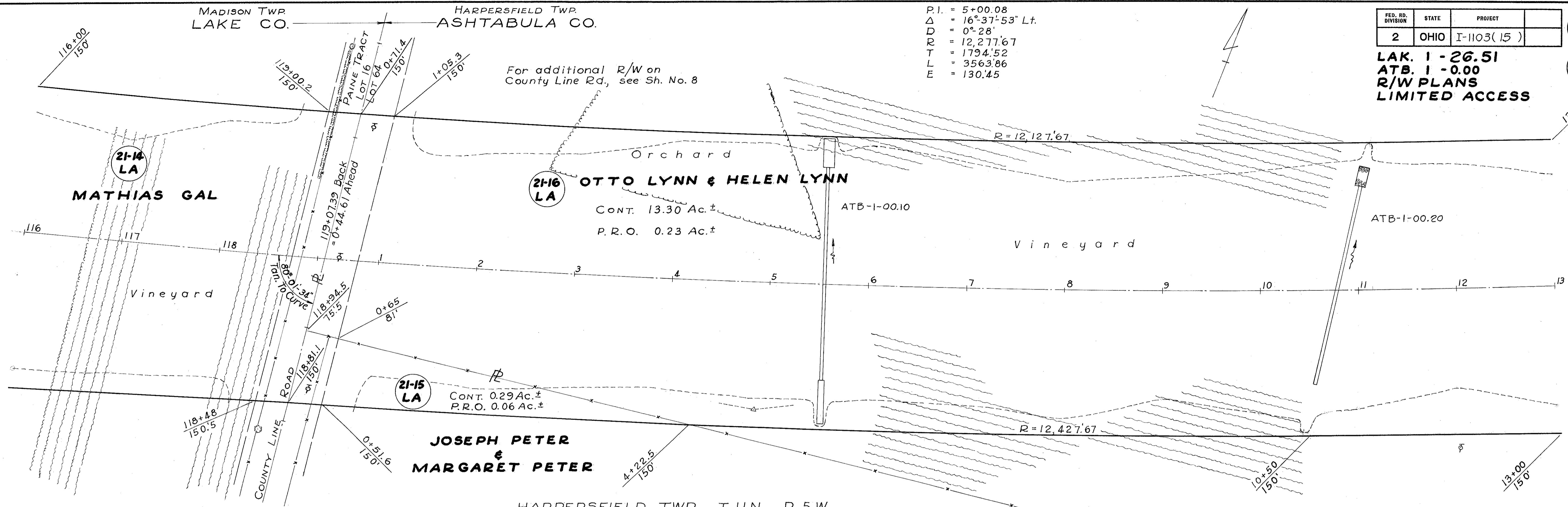
FED. NO. DIVISION	STATE	PROJECT
2	OHIO	I-1103(15)

169
176

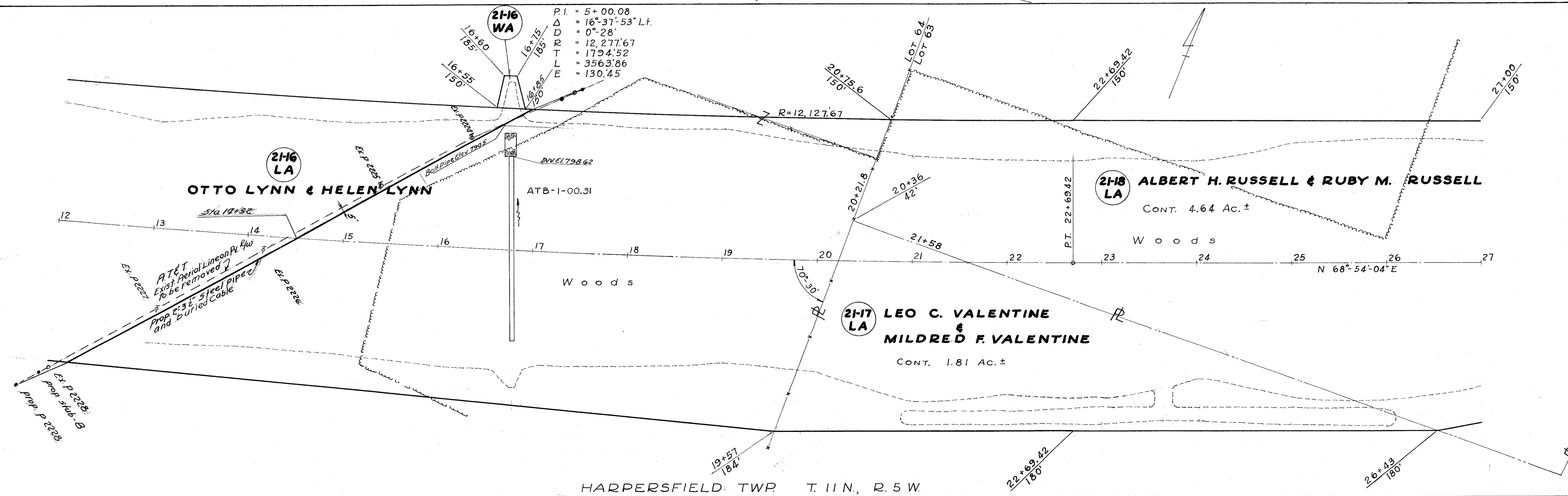
7

LAK. 1 - 26.51
ATB. 1 - 0.00
R/W PLANS
LIMITED ACCESS

For additional R/W on
County Line Rd., see Sh. No. 8



HARPERSFIELD TWP. T. 11 N., R. 5 W.



HARPERSFIELD TWP. T. 11 N., R. 5 W.