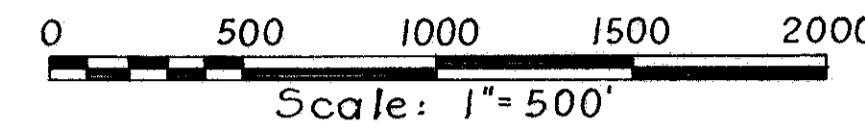


LOCATION PLAN

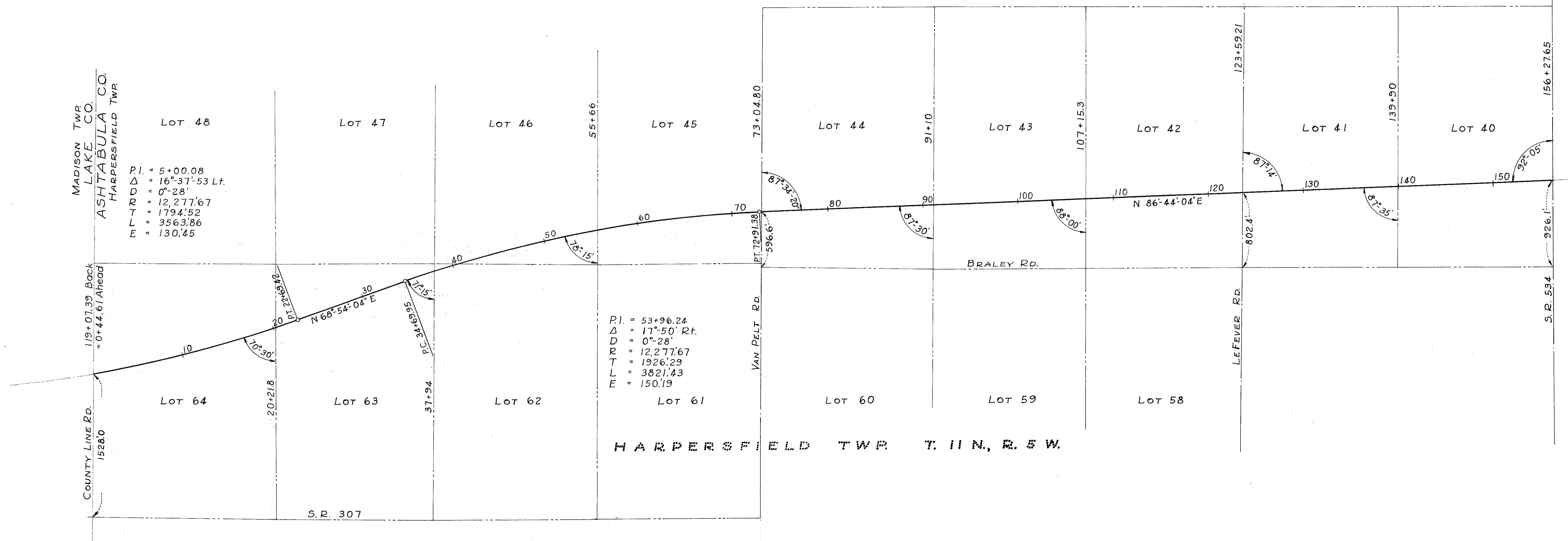
S. R. 1 LAK 1 -26.51
S. R. 1 ATB 1 -0.00
ASHTABULA COUNTY



LIMITED ACCESS

Received _____ at _____
 Recorded _____
 Plat Book _____ Page _____
 Signed _____ Recorder, Ashtabula County, Ohio
 Fee _____

Signed John Russell
 Right of Way Engineer - Interstate Projects
 Date 7/18/57 Registered Surveyor No. 104
 Signed Valden J. Farnham
 Charles L. Barber & Assoc. Engrs. & Architects
 Date 3-10-57 Registered Surveyor No. 4862



CENTERLINE REFERENCE MONUMENTS

○	○	○	○									
STA. 105+00	STA. 115+00	STA. 125+00	STA. 135+00									
○	○	○	○	○	○	○	○	○	○	○	○	
STA. 5+00	STA. 15+00	P.T. STA. 22+69.42	STA. 28+00	P.C. STA. 34+69.95	STA. 44+00	STA. 54+00	STA. 60+00	STA. 65+00	P.T. STA. 72+91.38	STA. 80+00	STA. 90+00	STA. 99+00

Centerline reference monuments are to be set at the locations shown after completion of construction.