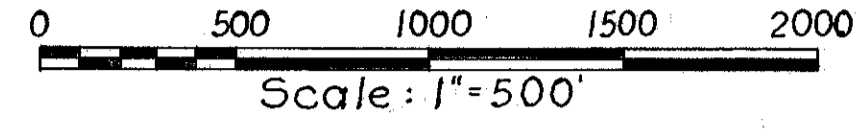


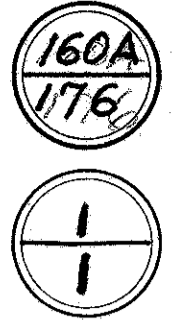
LOCATION PLAN

S. R. 1 LAK 1 -26.51
S. R. 1 ATB 1 -0.00
LAKE COUNTY



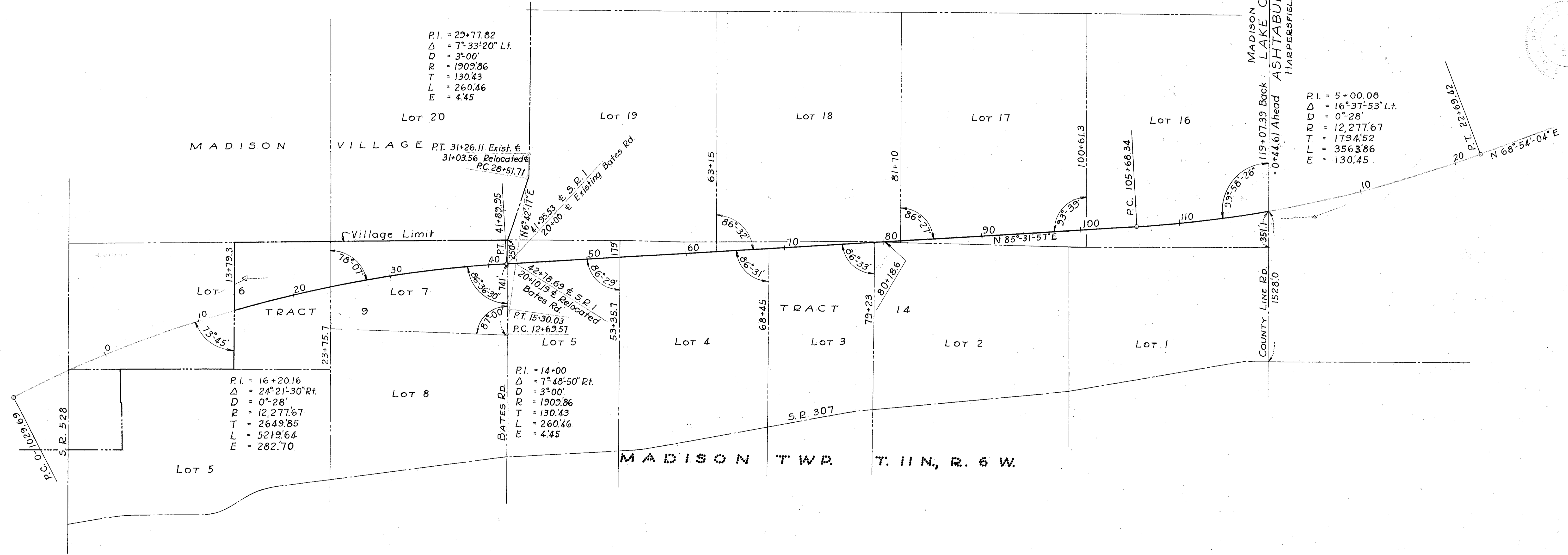
LIMITED ACCESS

Received _____ at _____
 Recorded _____
 Plat Book _____ Page _____
 Signed _____ Recorder, Lake County, Ohio
 Fee _____



Signed John Purcell
 Right of Way Engineer - Interstate Projects.
 Date 9/13/07 Registered Surveyor No. 104

Signed Valden J. Jarman
 Charles L. Barber & Assoc. Engrs. & Architects
 Date 9-10-07 Registered Surveyor No. 4262



CENTERLINE REFERENCE MONUMENTS

Centerline reference monuments are to be set at the locations shown after completion of construction.

 STA. 115+00	 STA. 14+00	 STA. 20+00	 STA. 26+00	 STA. 34+00	 P.T. STA. 41+89.95	 STA. 50+00	 STA. 60+00	 STA. 70+00	 STA. 80+00	 STA. 90+00	 STA. 100+00	 P.C. STA. 105+68.34
-----------------	----------------	----------------	----------------	----------------	------------------------	----------------	----------------	----------------	----------------	----------------	-----------------	-------------------------