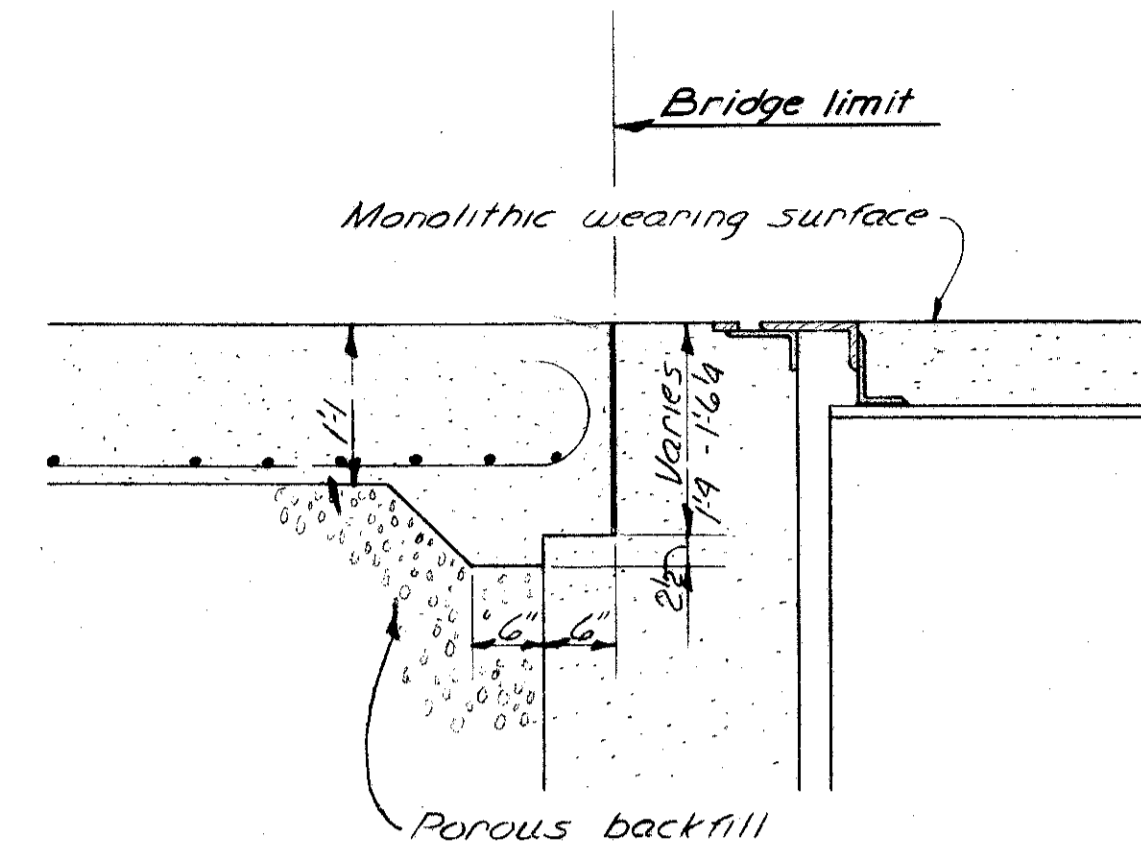
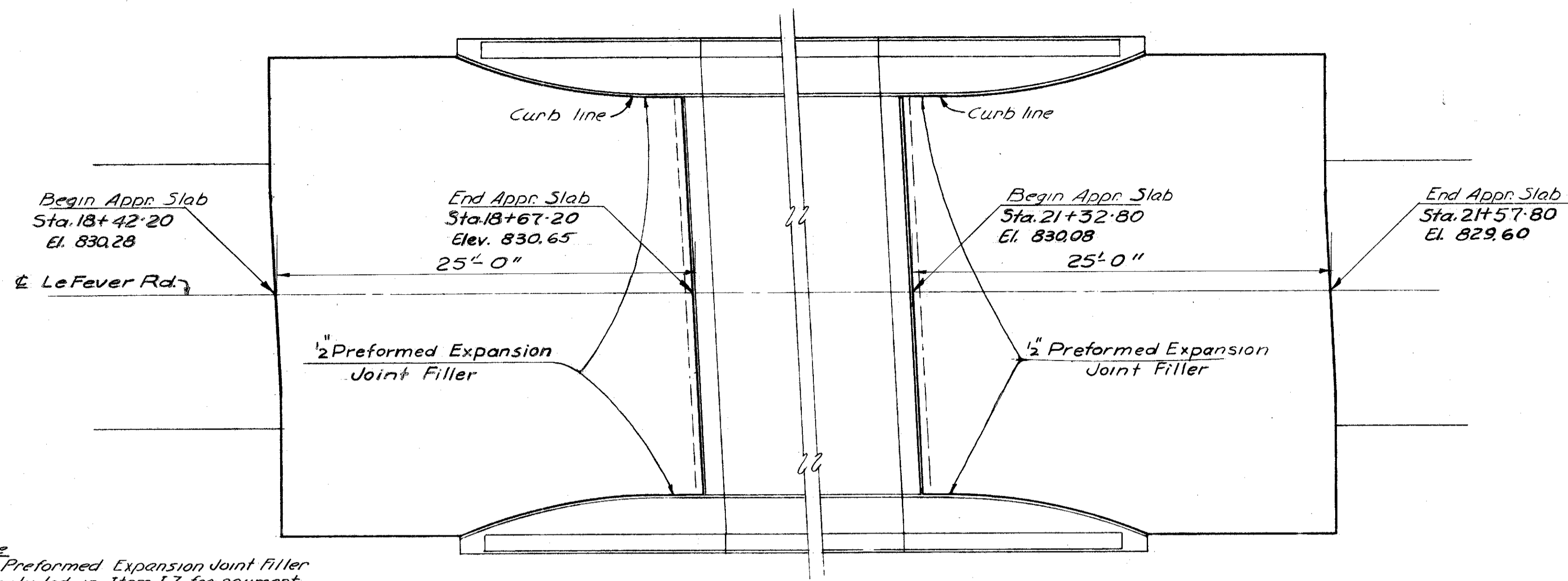
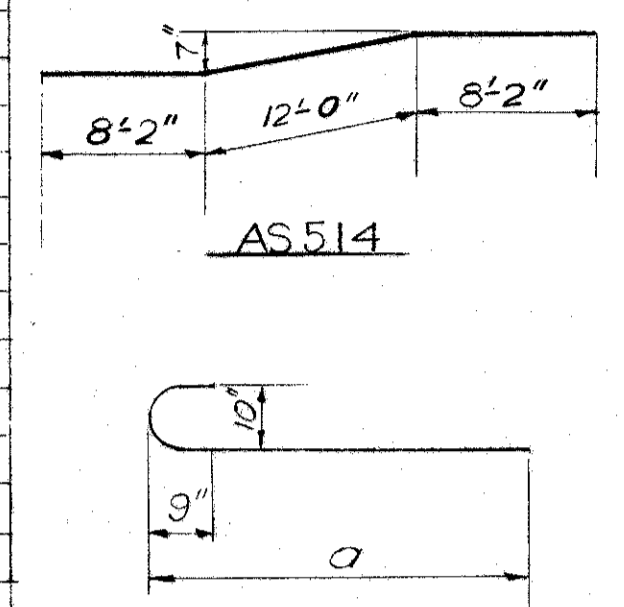


LAKE COUNTY
LAK-1-26.51
ASHTABULA COUNTY
ATB-1-0.00



SECTION C-C

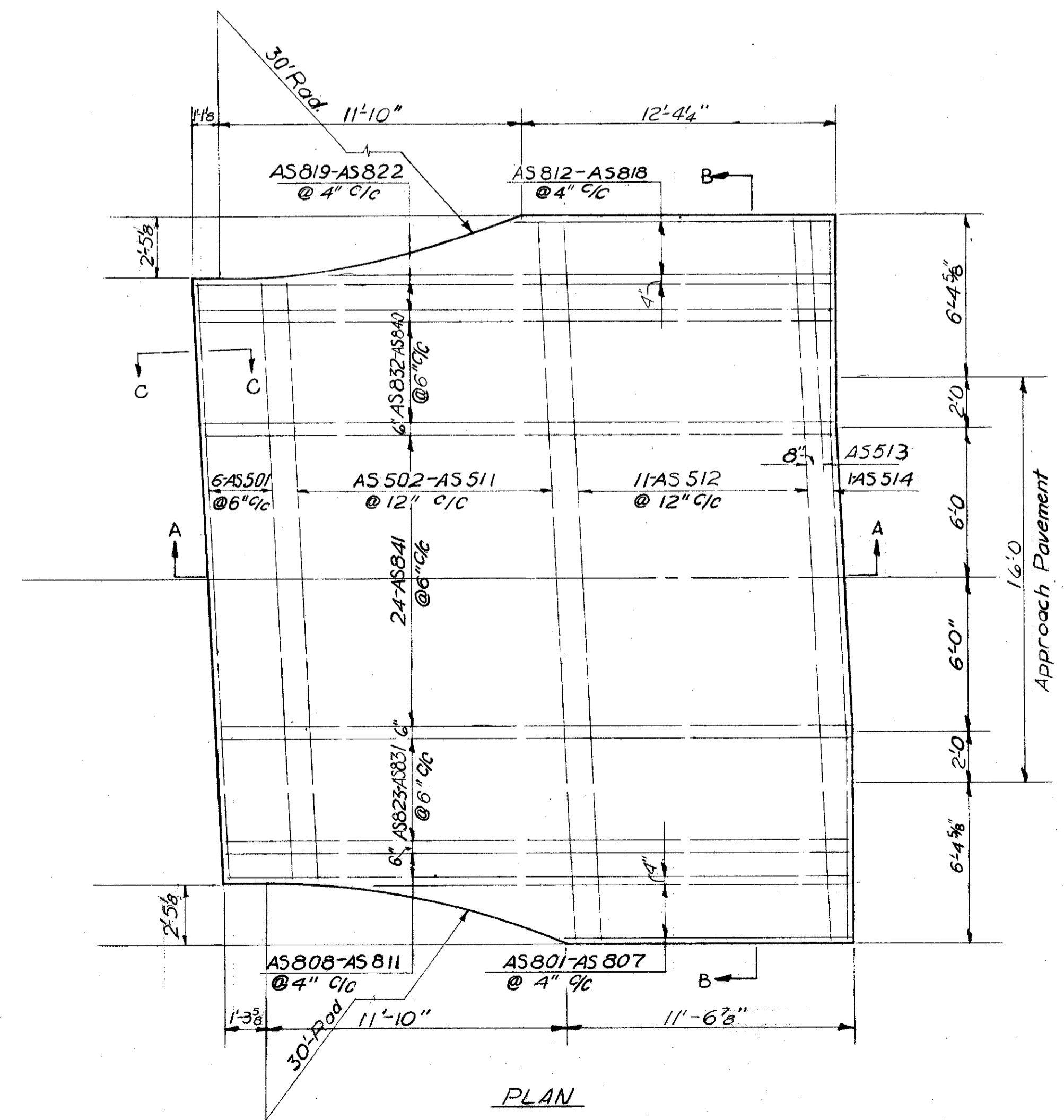
REINFORCING STEEL LIST				
BOTH APPROACH SLABS				
Mark	Length	Shape	No.	Wt.
AS 501	23'-7"	Str.	12	295
AS 502	23'-9"	"	2	50
AS 503	23'-11"	"	2	50
AS 504	24'-3"	"	2	51
AS 505	24'-7"	"	2	51
AS 508	25'-1"	"	2	52
AS 507	25'-7"	"	2	53
AS 508	26'-1"	"	2	54
AS 509	26'-9"	"	2	56
AS 510	27'-5"	"	2	57
AS 511	28'-4"	"	2	59
AS 512	28'-4"	"	22	650
AS 513	8'-0"	"	2	17
AS 514	28'-4"	Bent	2	59
AS 801	11'-9"	Str.	2	63
AS 802	12'-8"	"	2	68
AS 803	13'-8"	"	2	73
AS 804	14'-10"	"	2	79
AS 805	16'-2"	"	2	86
AS 806	17'-6"	"	2	93
AS 807	19'-11"	"	2	106
AS 808/AS 811	25'-3"	Bent	8	539
AS 812	19'-10"	Str.	2	106
AS 813	18'-3"	"	2	97
AS 814	16'-11"	"	2	90
AS 815	15'-6"	"	2	83
AS 816	14'-6"	"	2	77
AS 817	13'-6"	"	2	72
AS 818	12'-6"	"	2	67
AS 819-AS 822	25'-10"	Bent	8	552
AS 823	25'-4"	"	2	135
AS 824	25'-5"	"	2	136
AS 825	25'-5"	"	2	136
AS 826	25'-5"	"	2	136
AS 827	25'-6"	"	2	136
AS 828	25'-6"	"	2	136
AS 829	25'-6"	"	2	136
AS 830	25'-7"	"	2	137
AS 831	25'-7"	"	2	137
AS 832	25'-7"	"	2	137
AS 833	25'-7"	"	2	137
AS 834	25'-8"	"	2	137
AS 835	25'-8"	"	2	137
AS 836	25'-8"	"	2	137
AS 837	25'-9"	"	2	138
AS 838	25'-9"	"	2	138
AS 839	25'-9"	"	2	138
AS 840	25'-10"	"	2	138
AS 841	25'-7"	"	48	3279
Total				9546



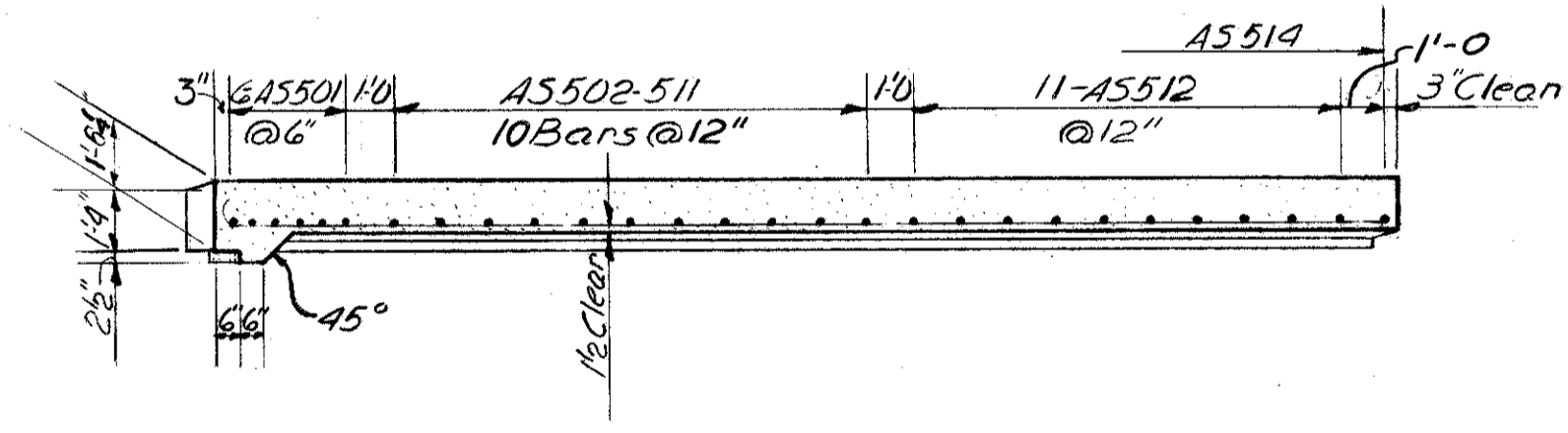
Note:
1/2 Preformed Expansion Joint Filler included in Item I-7 for payment.

Notes: Approach Slabs to be class "C" Concrete.
In the reinforcing steel bar marks, the numeral following the second letter is the Bar Number which indicates the size of the bar.

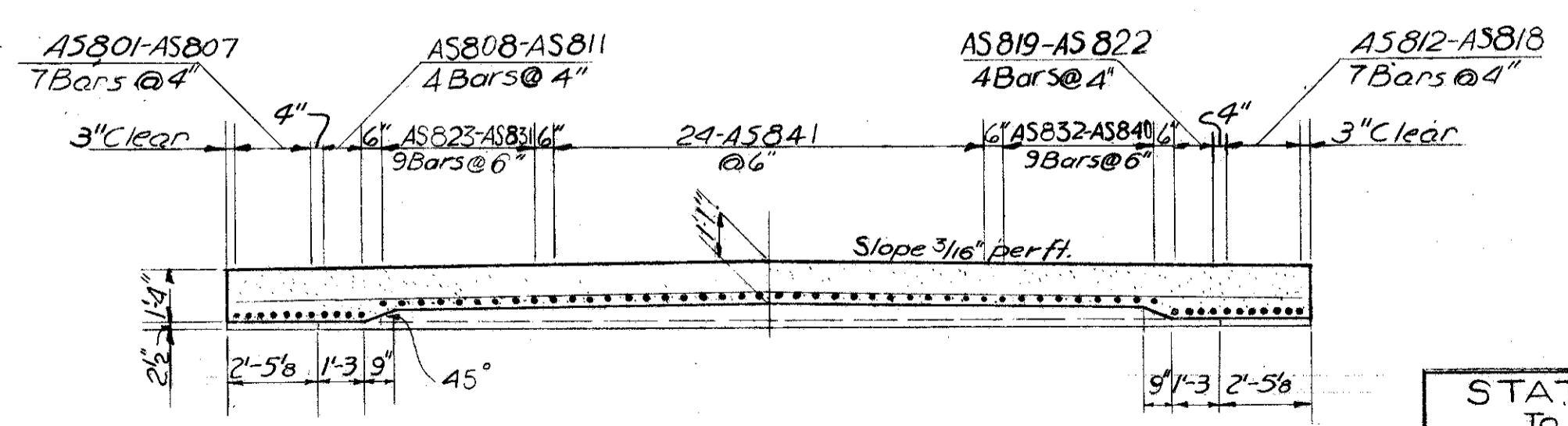
Note:
This Reinforcing Steel is included in the item "Reinforced Concrete Approach Slab Item I-7" and is not paid for separately.



PLAN



SECTION A-A



SECTION B-B

STATION TO STATION	REINFORCED CONCRETE APPROACH SLABS ITEM I-7
18+42.20 to 18+67.20	76 Sq. yd.
21+32.80 to 21+57.80	76 Sq. yd.
TOTAL	152 Sq. yd.

CHARLES L. BARBER AND ASSOCIATES
HARRY BALKE ENGINEERS
TOLEDO, OHIO

APPROACH SLAB DETAILS
BRIDGE NO. ATB-1-0233
SRI UNDER LEFEVER RD.
ASHTABULA CO. SRI
STA. 123+59.21

DESIGNED	DRAWN	TRACED	CHECKED	REVIEWED	DATE	REVISED
RTS.	M.S.		J.R.	ACA.	8/28/57	