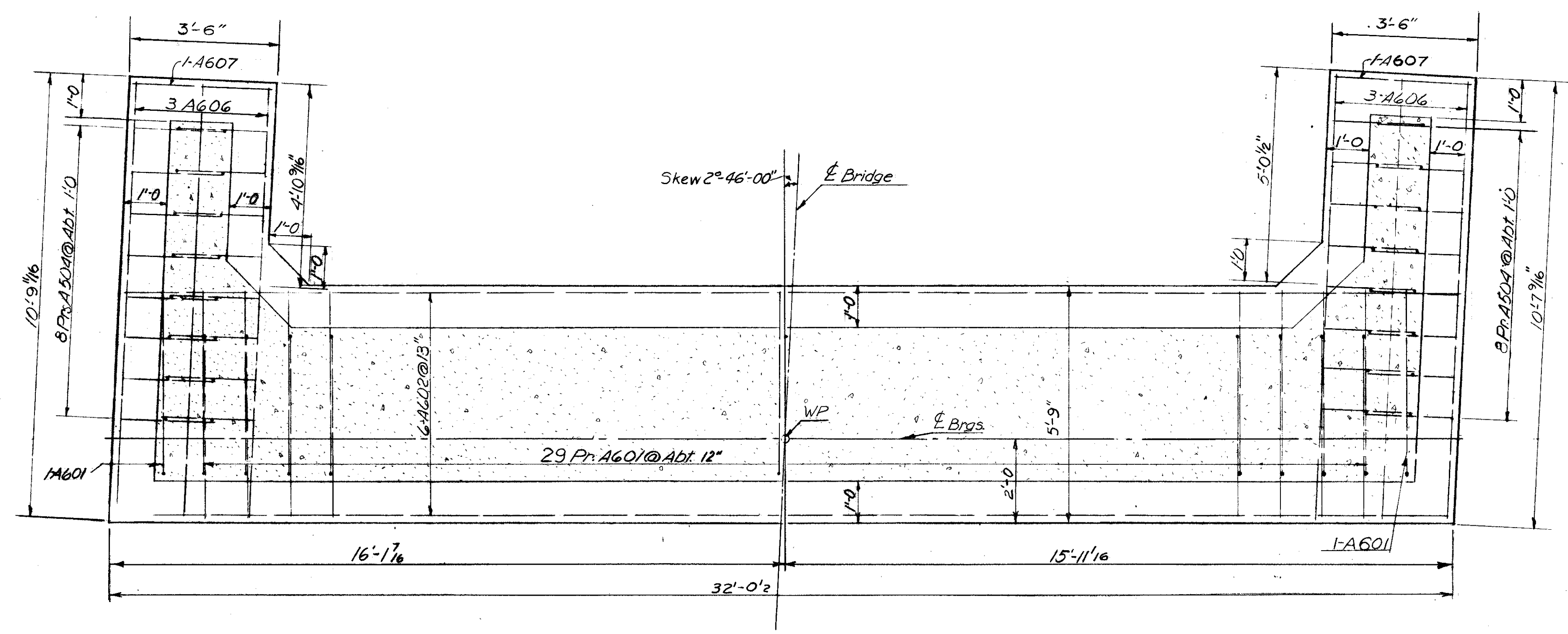
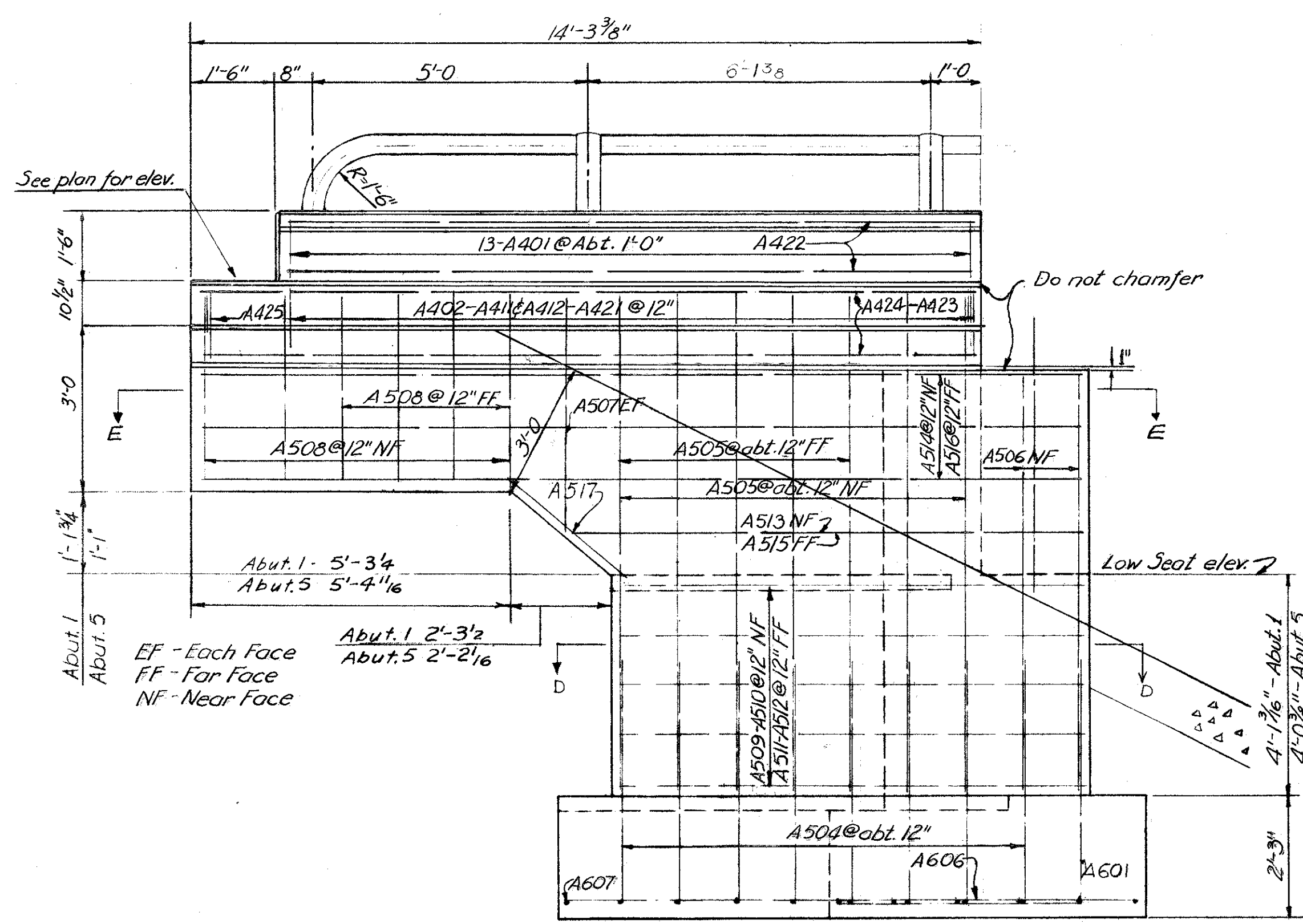


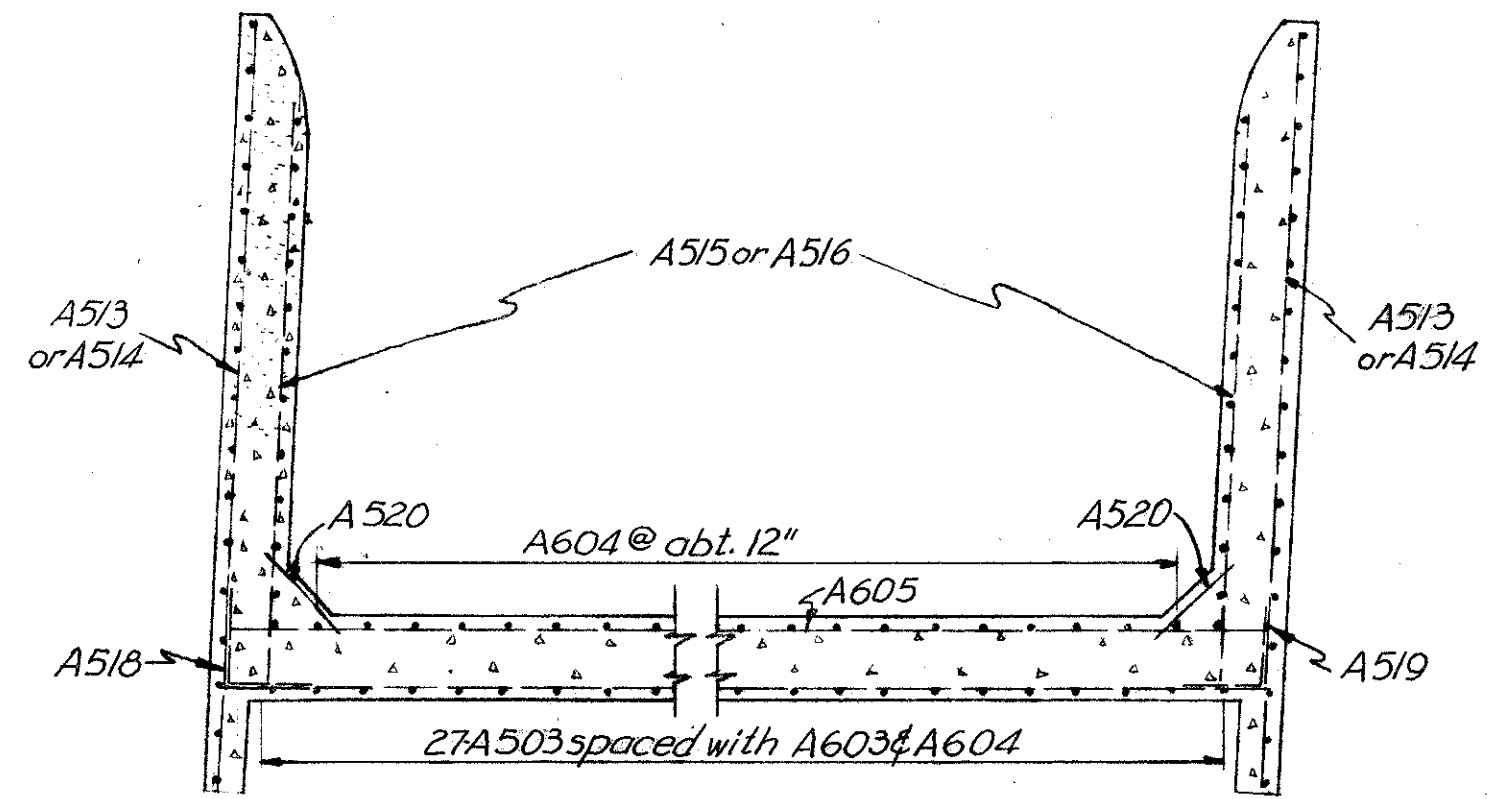
LAKE COUNTY
LAK-1-26.51
ASHTABULA COUNTY
ATB-1-000



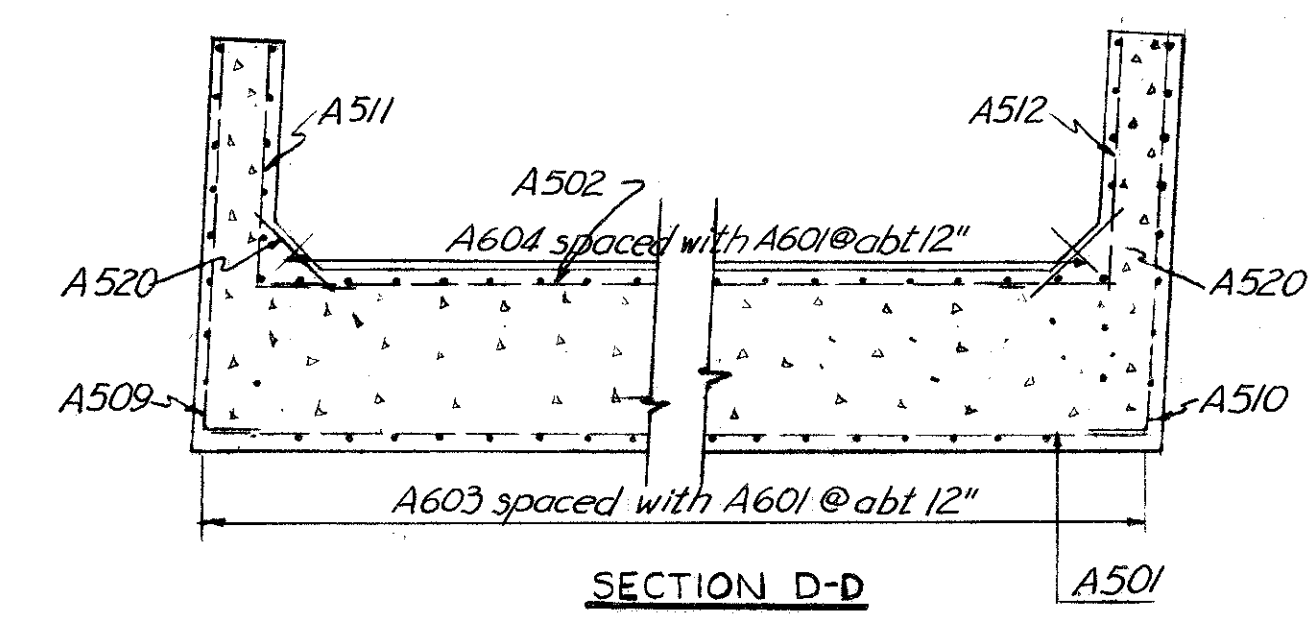
FOOTING PLAN



ELEVATION F-F

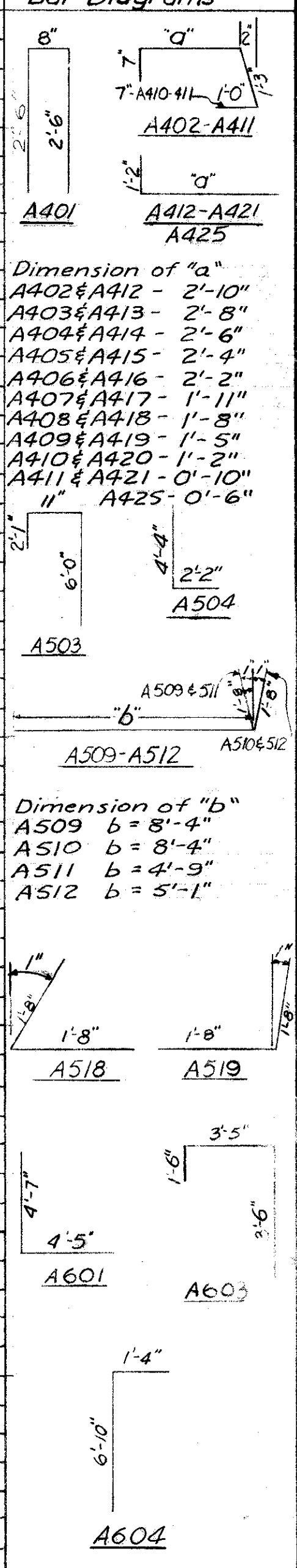


SECTION E-E



SECTION D-D

REINFORCING STEEL LIST					Bar Diagrams
Both Abutments					
Mark	Length	Shape	No.	Weight	
A401	5'-8"	Bent	52	197	
A402	5'-8"	Bent	12	45	
A403	5'-6"	Bent	8	29	
A404	5'-4"	Bent	4	14	
A405	5'-2"	Bent	4	14	
A406	5'-0"	Bent	4	13	
A407	4'-9"	Bent	4	13	
A408	4'-6"	Bent	4	12	
A409	4'-3"	Bent	4	11	
A410	3'-7"	Bent	4	10	
A411	3'-3"	Bent	4	9	
A412	4'-0"	Bent	12	32	
A413	3'-10"	Bent	8	20	
A414	3'-8"	Bent	4	10	
A415	3'-6"	Bent	4	9	
A416	3'-4"	Bent	4	9	
A417	3'-1"	Bent	4	8	
A418	2'-10"	Bent	4	8	
A419	2'-7"	Bent	4	7	
A420	2'-4"	Bent	4	6	
A421	2'-0"	Bent	4	5	
A422	12'-5"	Str.	16	133	
A423	10'-0"	Str.	8	53	
A424	14'-0"	Str.	16	150	
A425	1'-8"	Bent	4	4	
A501	29'-8"	Str.	28	866	
A502	27'-2"	Str.	10	283	
A503	9'-0"	Bent	54	507	
A504	6'-6"	Bent	64	434	
A505	8'-10"	Str.	48	442	
A506	7'-3"	Str.	8	60	
A507	3'-11"	Str.	8	33	
A508	3'-5"	Str.	40	143	
A509	10'-0"	Bent	10	104	
A510	10'-0"	Bent	10	104	
A511	6'-5"	Bent	10	67	
A512	6'-9"	Bent	10	70	
A513	9'-4"	Str.	4	39	
A514	15'-9"	Str.	12	197	
A515	7'-3"	Str.	4	30	
A516	11'-4"	Str.	12	142	
A517	4'-3"	Str.	8	35	
A518	3'-4"	Bent	8	28	
A519	3'-4"	Bent	8	28	
A520	3'-2"	Str.	32	106	
A601	9'-0"	Bent	120	1622	
A602	3'-8"	Str.	12	571	
A603	8'-5"	Bent	62	784	
A604	8'-2"	Bent	58	711	
A605	29'-8"	Str.	6	267	
A606	10'-4"	Str.	12	186	
A607	3'-2"	Str.	4	19	
A426	1'-6"	Str.	56	56	
A427	2'-4"	Str.	40	62	
Total				8817	



Parapet Concrete included with S-14 for payment.

CHARLES L. BARBER AND ASSOCIATES
HARRY BALKE ENGINEERS
TOLEDO, OHIO

ABUTMENT DETAILS

BRIDGE No ATB-1 -0233
SR 1 UNDER LEFEVER RD.
ASHTABULA CO. SR 1
STA. 123+59.21

DESIGNED	DRAWN	TRACED	CHECKED	REVIEWED	DATE	REVISED
CTL	MS		JPR	A.C.A.	8/28/57	