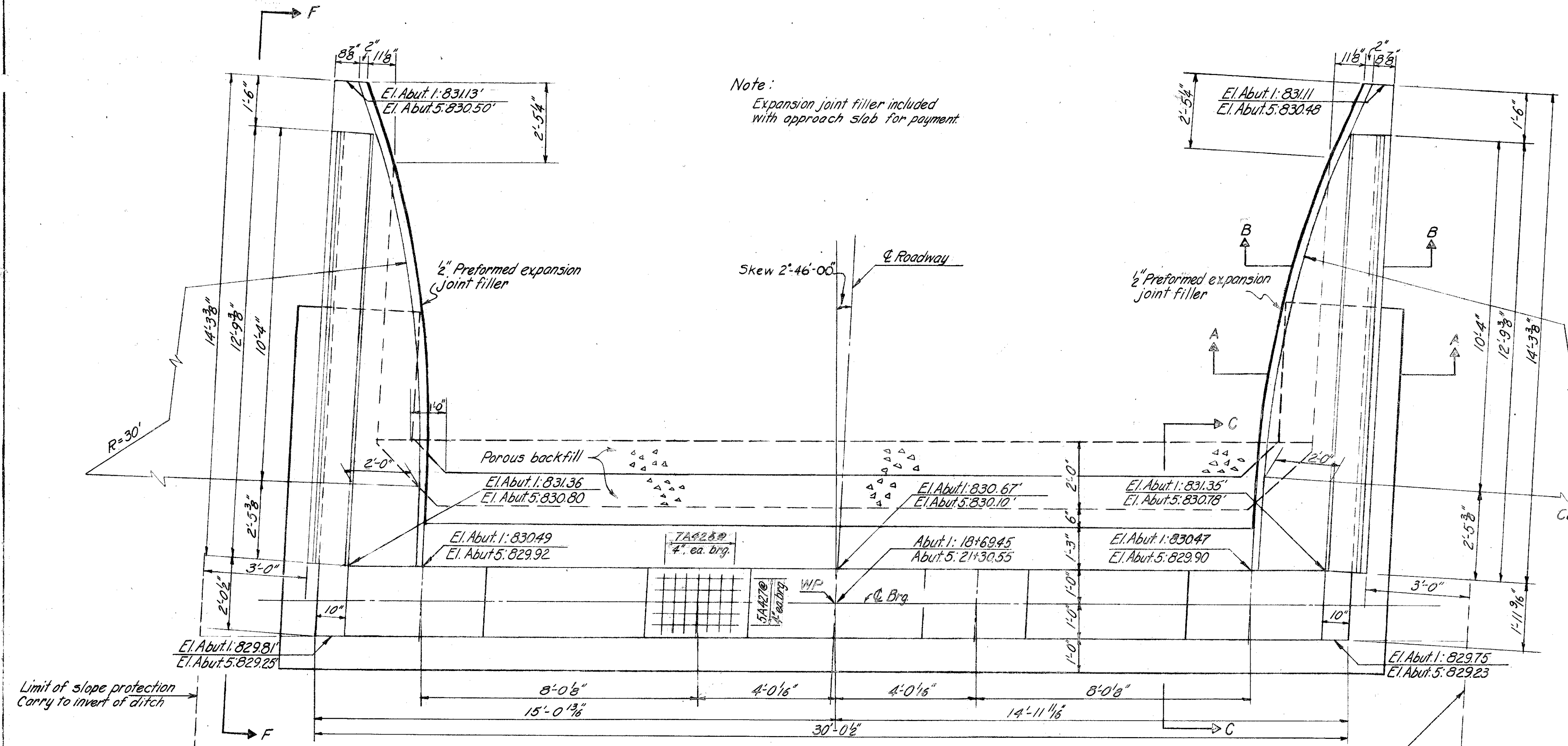
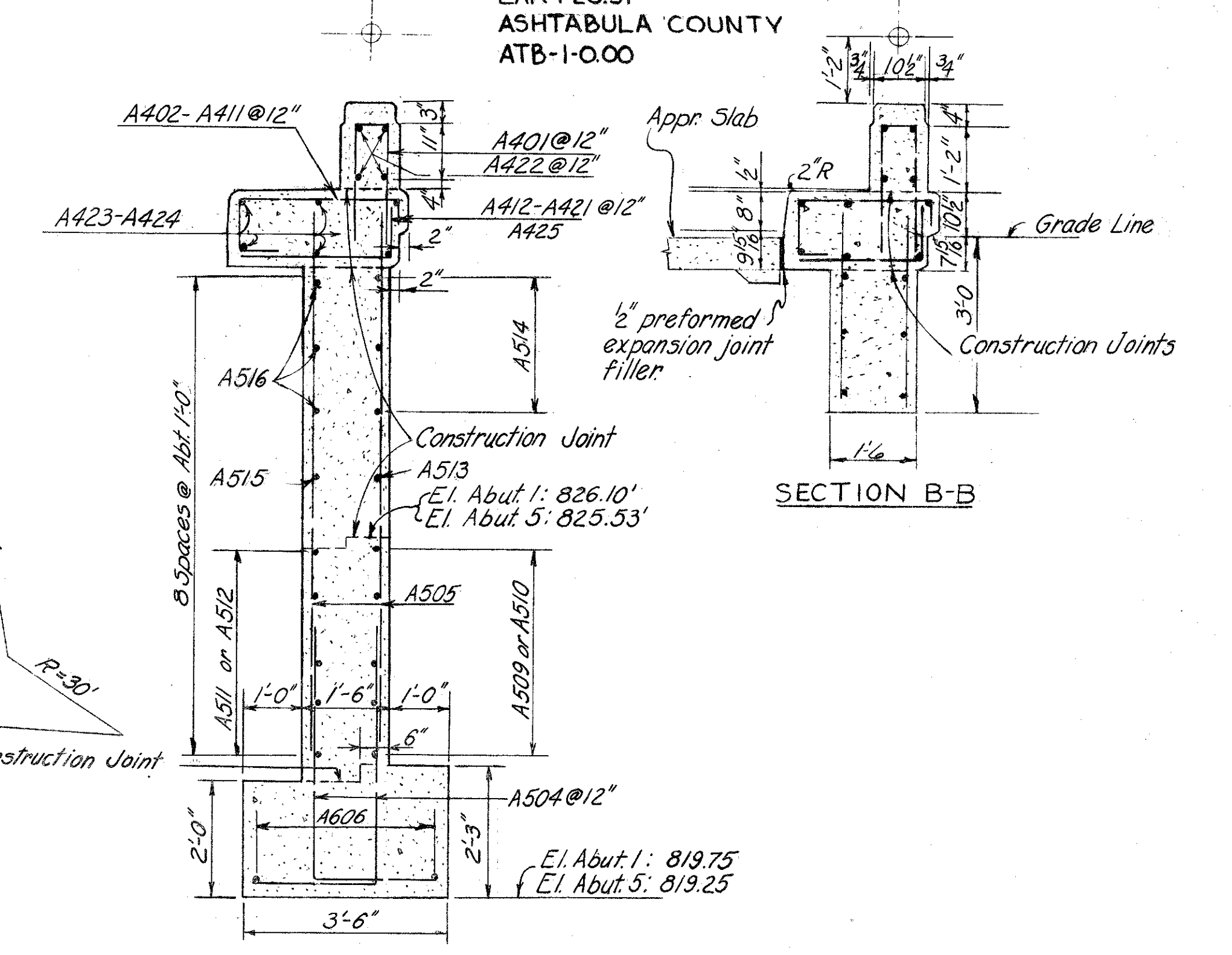


LAKE COUNTY
LAK-126.51
ASHTABULA COUNTY
ATB-1-000

Note:
Expansion joint filler included
with approach slab for payment

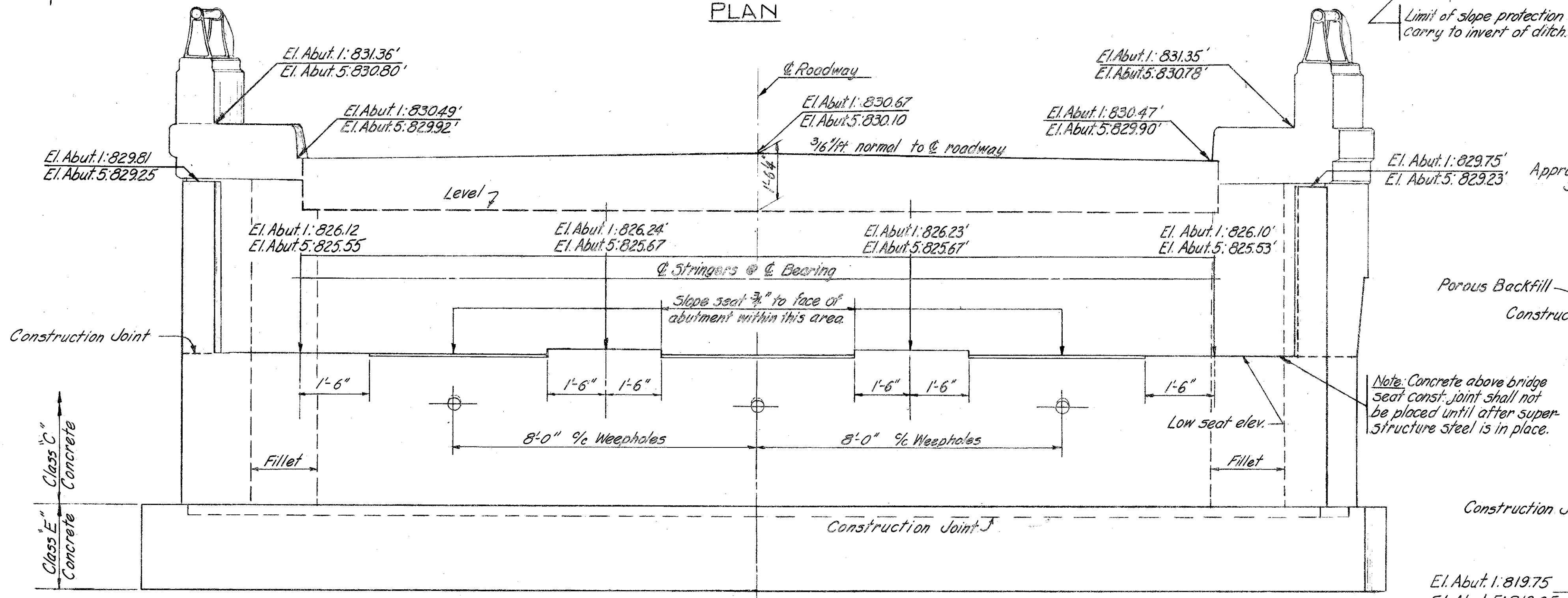


PLAN



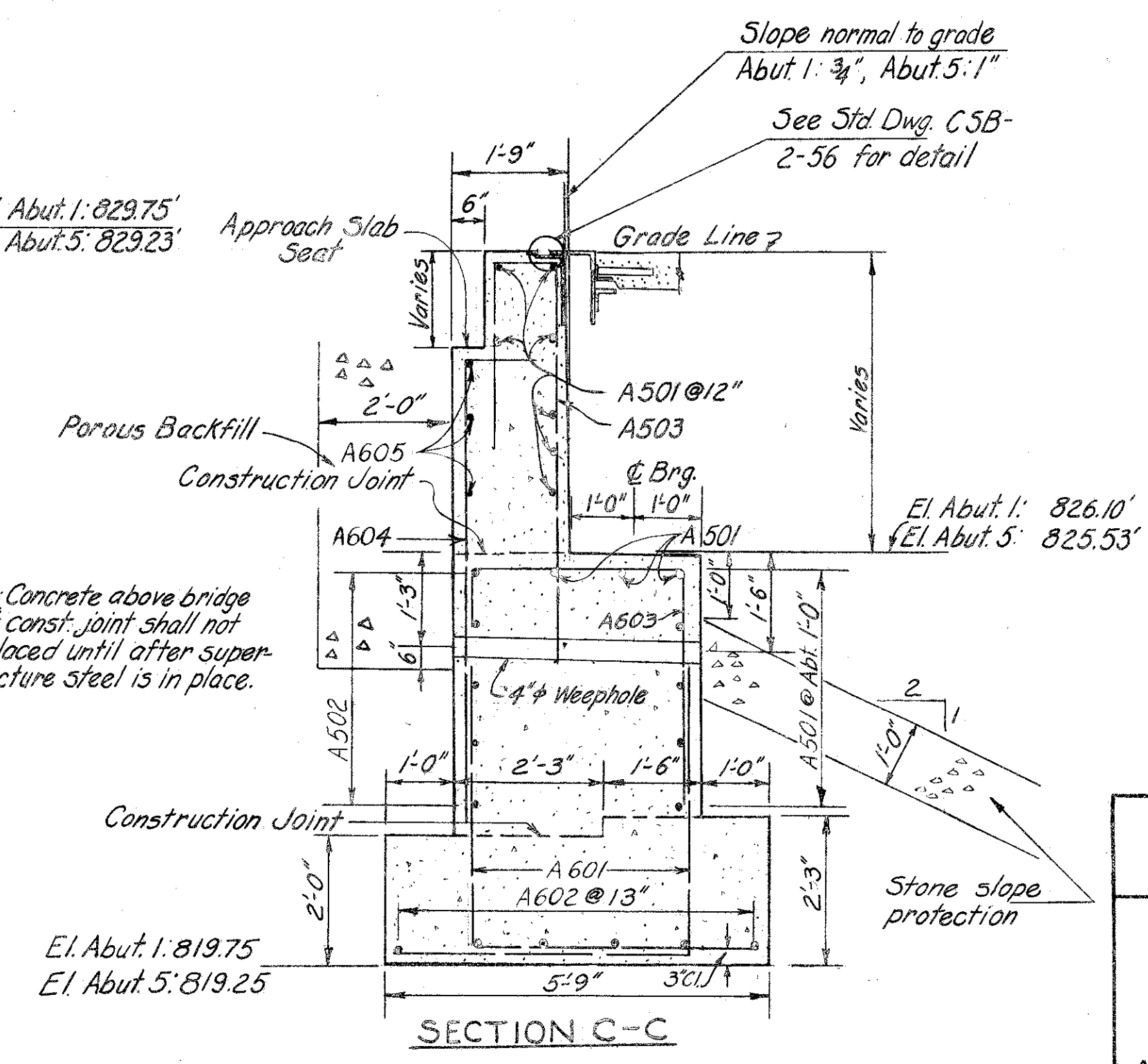
SECTION A-A

PROCEDURE: The embankment shall be placed and compacted to subgrade elevation after which excavation shall be made for the abutments.



ELEVATION

Note: Maximum Footing Pressure 3.0 %/sq ft



SECTION C-C

Note:
Reinforcing steel shall clean the face of the concrete by 2" unless otherwise noted.

CHARLES L. BARBER AND ASSOCIATES
HARRY BALKE ENGINEERS
TOLEDO, OHIO

ABUTMENT DETAILS

BRIDGE NO ATB-1-0233
SR 1 UNDER LEFEVER RD.
ASHTABULA CO. SR 1
STA. 123+59.21

DESIGNED	DRAWN	TRACED	CHECKED	REVIEWED	DATE	REVISED
CTL	MS		JPR	A.C.A.	8/28/57	