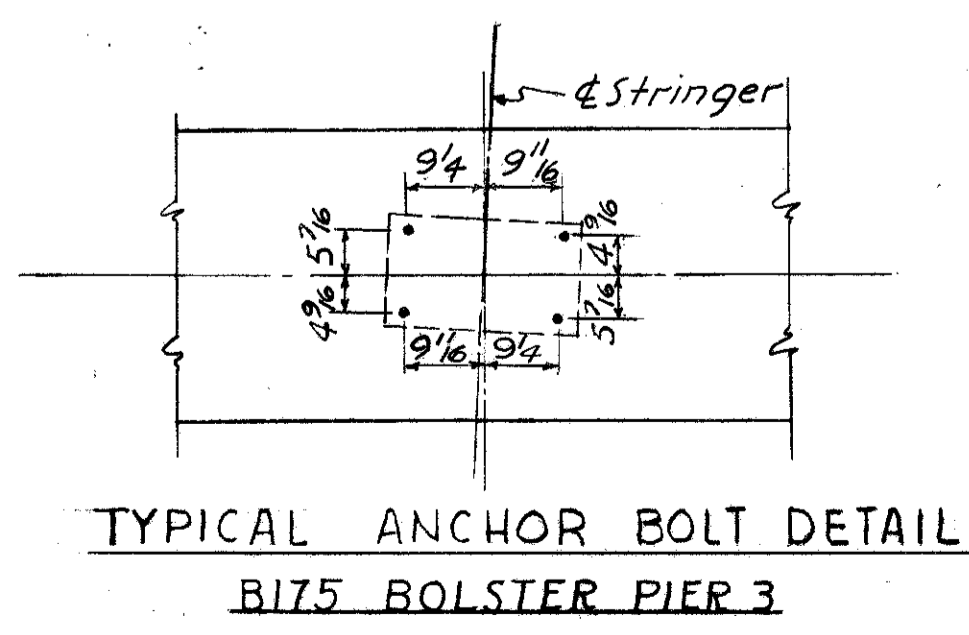
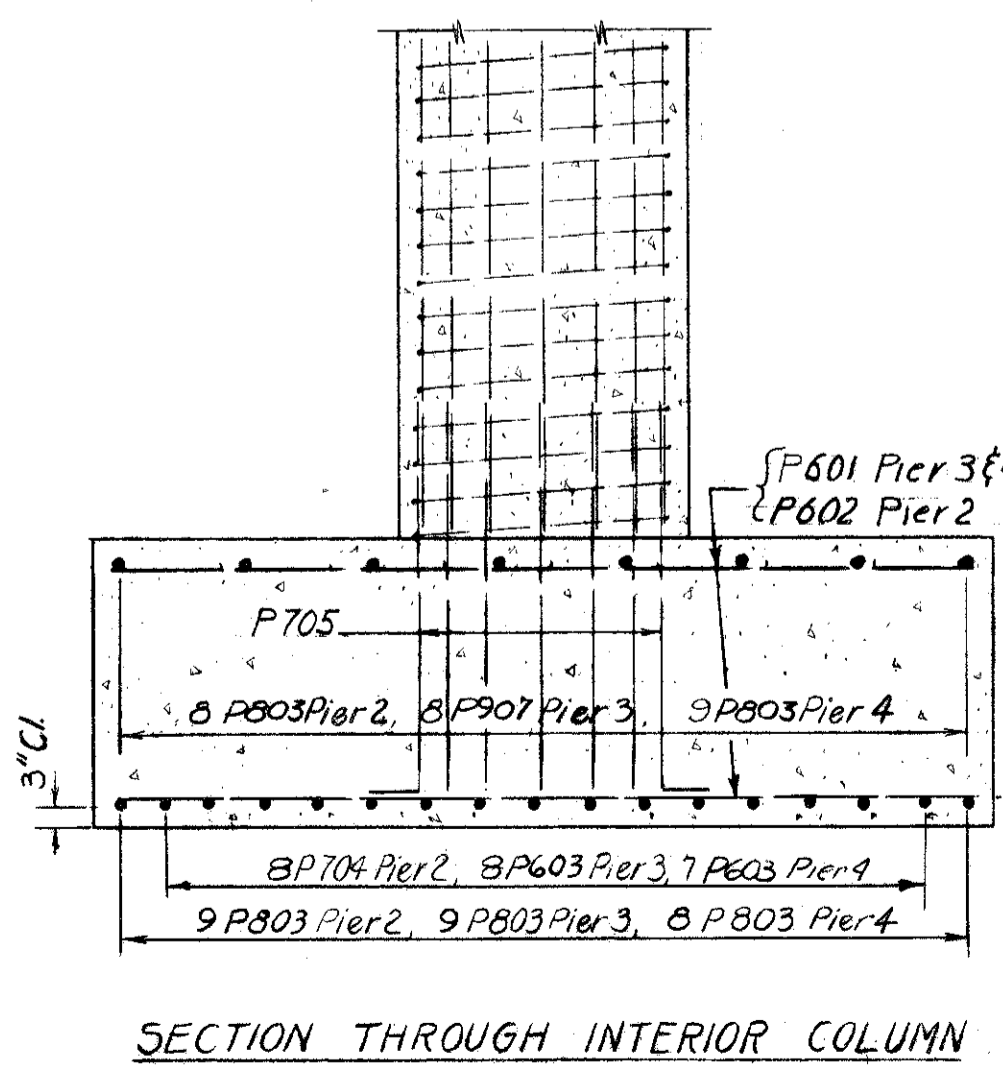
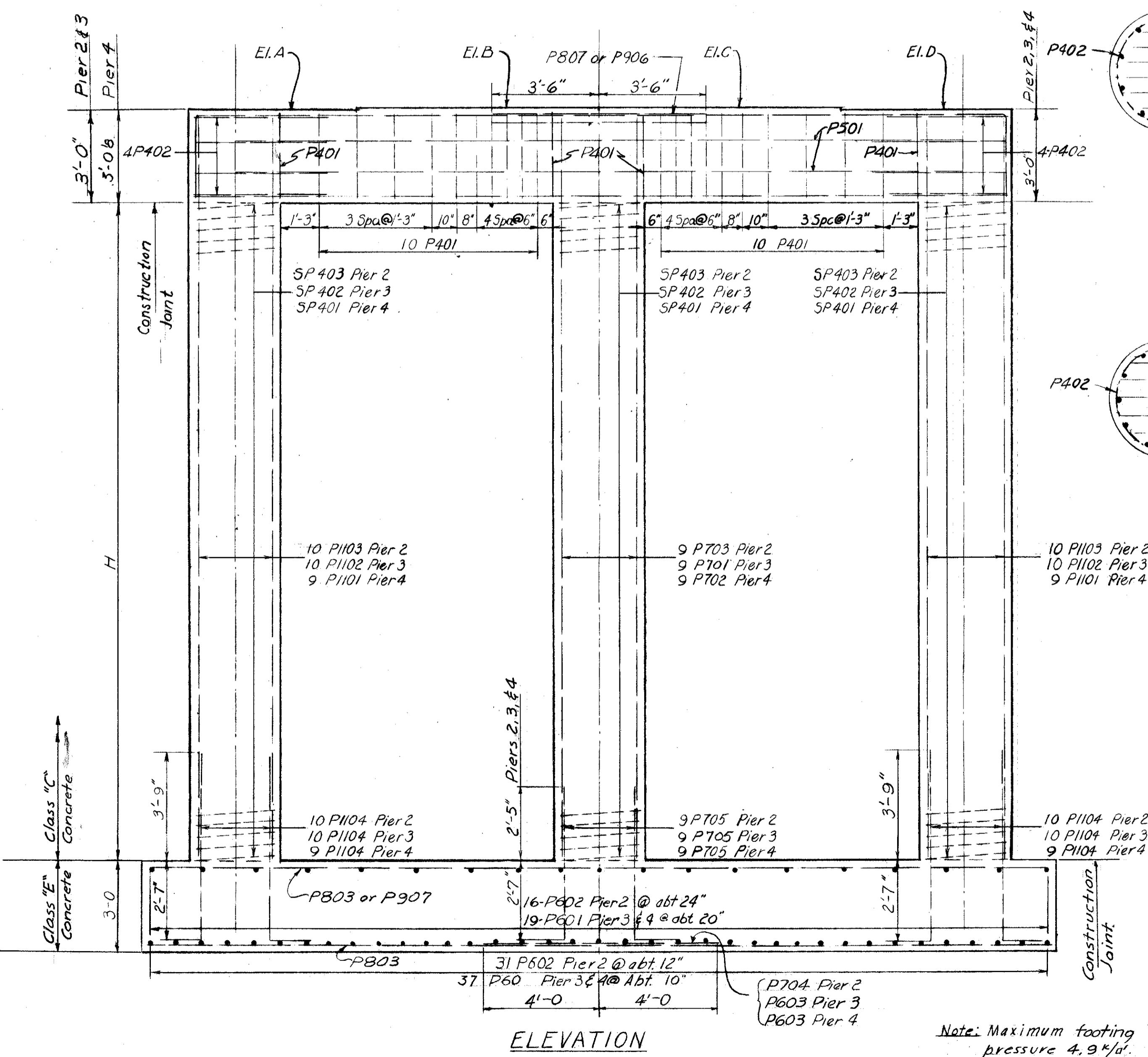
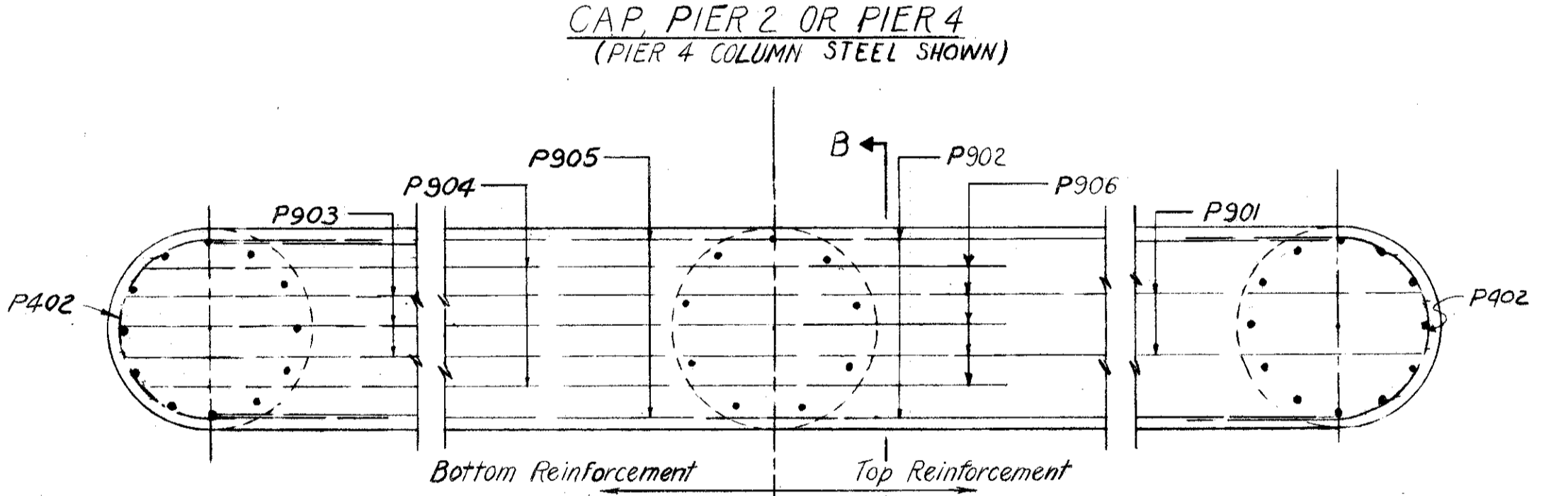
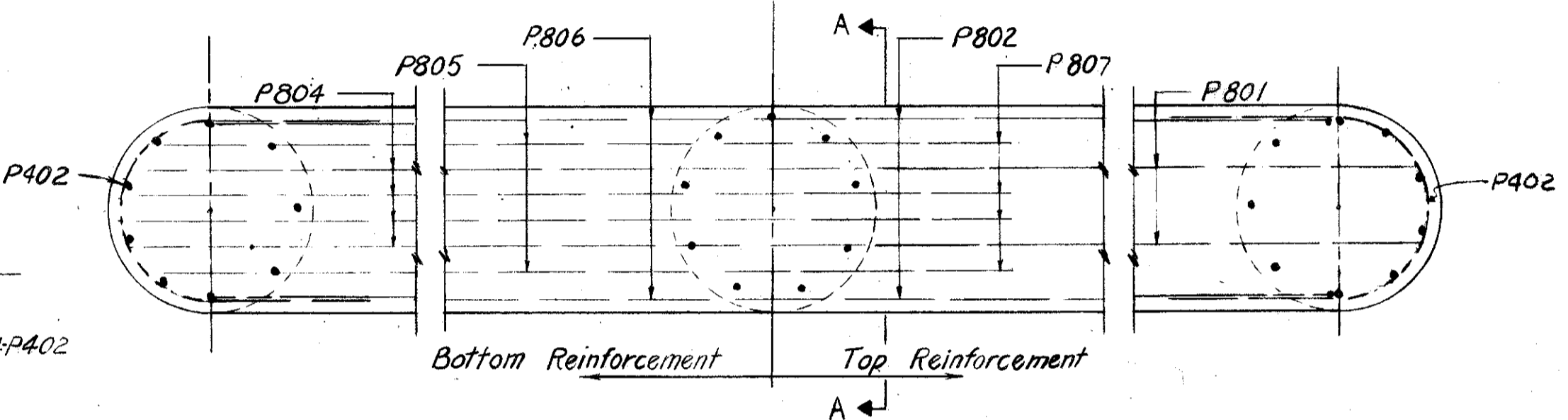
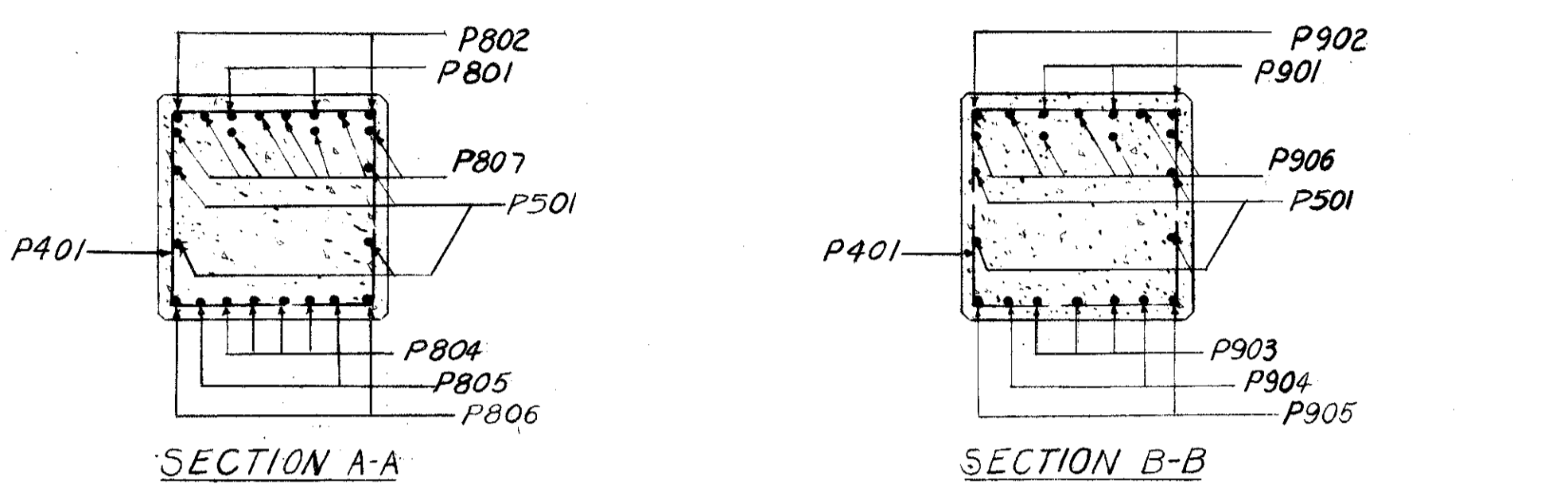
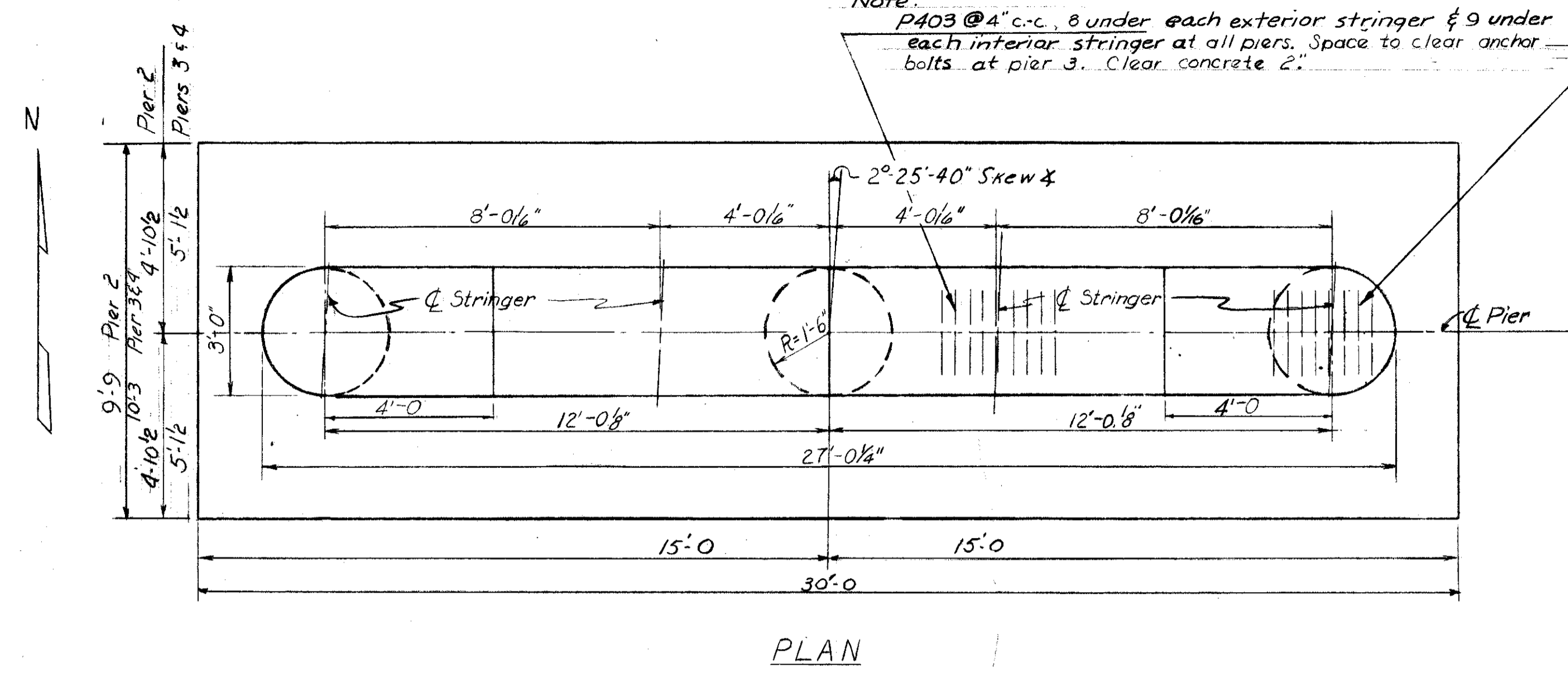


LAKE COUNTY
LAK-1-26.51
ASHTABULA COUNTY
ATB-1-000

	Elev. A	Elev. B	Elev. C	Elev. D	El. Bott. Ftg.	H
Pier 2	813.47	813.59	813.60	813.47	791.00	16'-5 3/8"
Pier 3	813.53	813.65	813.65	813.53	789.00	18'-6 3/8"
Pier 4	813.13	813.25	813.25	813.12	788.00	19'-1 1/2"

Note:
Reinforcing steel shall clear the face of the concrete by 2" unless otherwise noted.

Note:
P403 @ 4" c-c, 8 under each exterior stringer & 9 under each interior stringer at all piers. Space to clear anchor bolts at pier 3. Clear concrete 2".



REINFORCING STEEL LIST					THREE PIERS	
Mk	Length	Shape	No	Weight	Bending Schedule	
P401	11'-6"	Bent	72	553		
P402	10'-2"	Bent	24	163		
P403	2'-0"	Str.	102	136		
P501	24'-0"	Str.	12	300		
P701	21'-2"	Str.	9	389		
P702	21'-10"	Str.	9	402		
P703	19'-2"	Str.	9	353		
P704	8'-0"	Str.	8	131		
P705	5'-5"	Bent	27	299		
P801	32'-0"	Bent	4	342		
P802	29'-4"	Bent	4	313		
P803	29'-8"	Str.	43	3406		
P804	26'-8"	Str.	8	570		
P805	26'-0"	Str.	4	278		
P806	24'-0"	Str.	4	256		
P807	7'-0"	Str.	16	299		
P907	29'-8"	Str.	8	807		
P901	32'-0"	Bent	2	218		
P902	29'-4"	Bent	2	199		
P903	26'-8"	Str.	3	272		
P904	26'-0"	Str.	2	177		
P905	24'-0"	Str.	2	163		
P906	7'-0"	Str.	7	167		
P1101	21'-10"	Str.	18	2088		
P1102	21'-2"	Str.	20	2249		
P1103	19'-2"	Str.	20	2037		
P1104	7'-1"	Bent	58	2183		
P601	9'-11"	Str.	112	1668		
P602	9'-5"	Str.	47	665		
P603	8'-0"	Str.	15	180		
		Total		21,263		

SPIRAL REINFORCING LIST							
Mark	No.	Size	Core dia.	Length	Pitch	No. of Turns	Weight
SP401	3	1/2"	2'-8"	19.12	4 1/2"	54	1063
SP402	3	1/2"	2'-8"	18.33	4 1/2"	52	1024
SP403	3	1/2"	2'-8"	16.97	4 1/2"	47	924
						Total	3011

Notes:
Spiral reinforcing bars shall not have deformations but shall in other respects conform to item S-4.
Four steel channel, tee or angle spacers, weighing approximately 0.68 lb. per lin. ft. of spacer, shall be provided for each spiral unit. They shall be equally spaced along the periphery of the coil. The number of pounds of these spacers, based on 0.68 lb. per lin. ft., will be paid for as reinforcing steel and is included in the tabulated quantity of spiral bars.
The "Length" shown in the steel list for the spiral bars is the distance from the top of the footing to the bottom of the pier cap.
The "No. of Turns" shown in the steel list for the spiral bars is the "Length" divided by the "Pitch", plus 3 turns (total number of closed coils), expressed as the nearest whole number.
1/2 closed coils shall be provided at the ends of each spiral unit.

CHARLES L. BARBER AND ASSOCIATES
HARRY BALKE ENGINEERS
TOLEDO, OHIO

PIER DETAILS

BRIDGE No ATB-1-0138
SR1 UNDER VAN PELT RD.
ASHTABULA CO. SR1
STA. 73+04.80

DESIGNED	DRAWN	TRACED	CHECKED	REVIEWED	DATE	REVISED
DMS	CTL		JB	A.C.A.	8/28/57	

Note: Maximum footing pressure 4.9 k/sq. ft.