

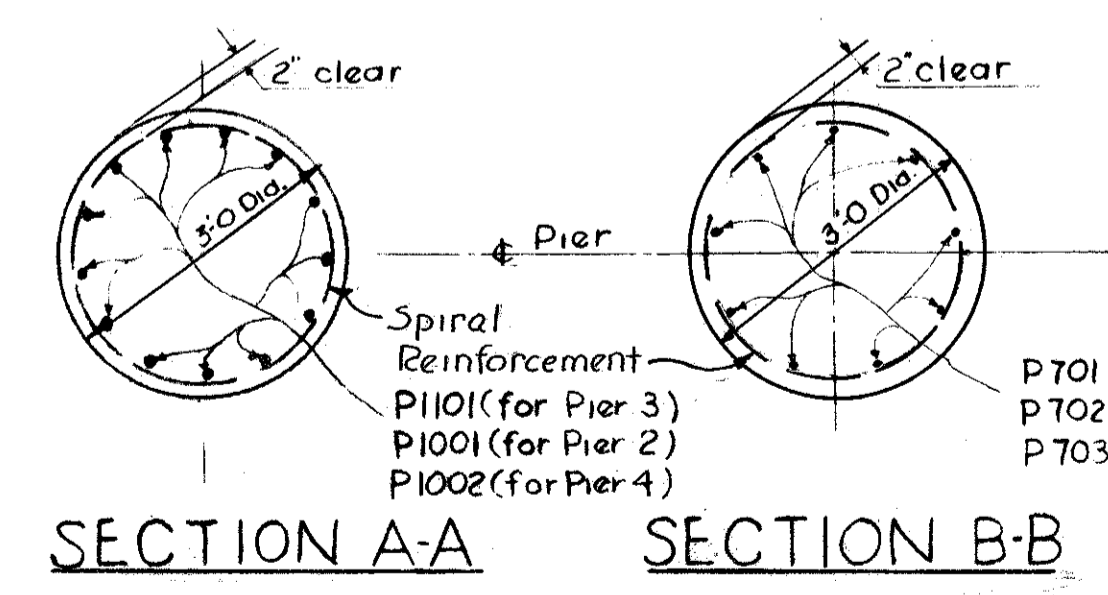
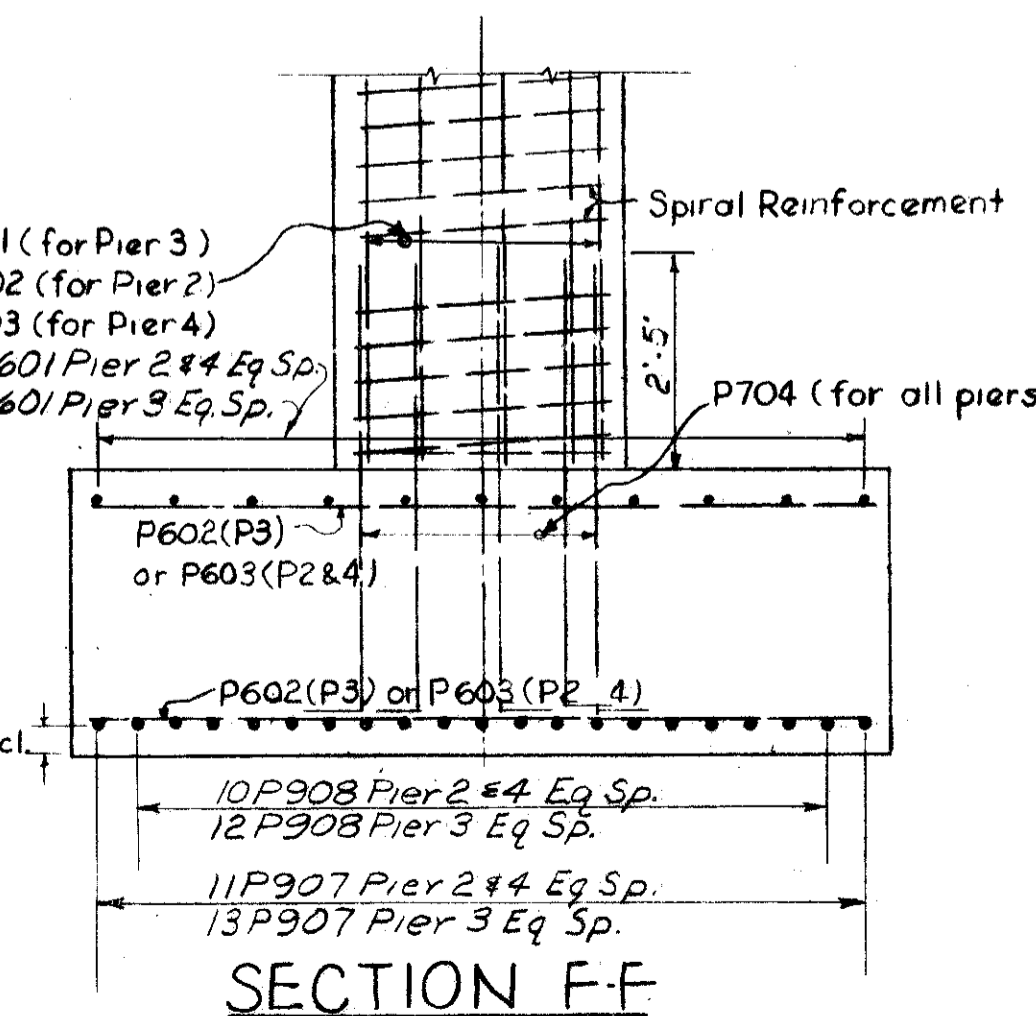
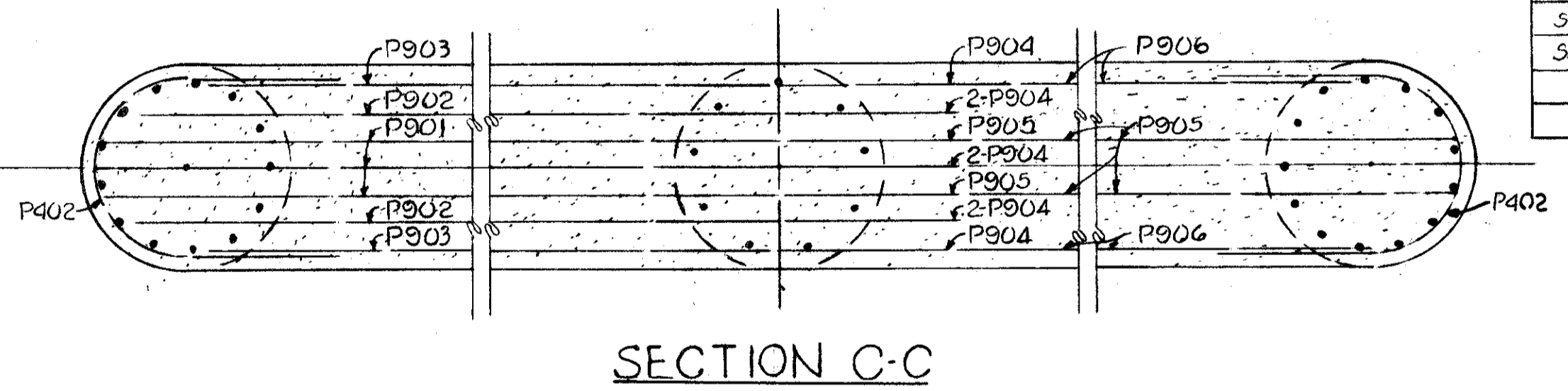
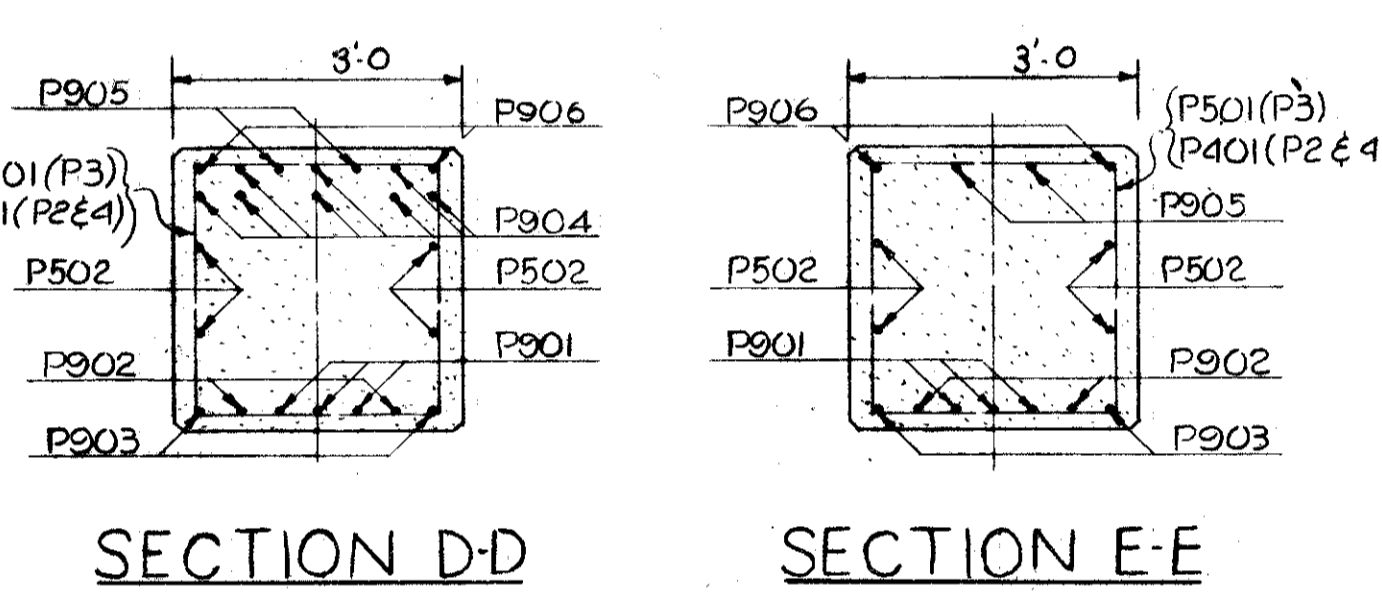
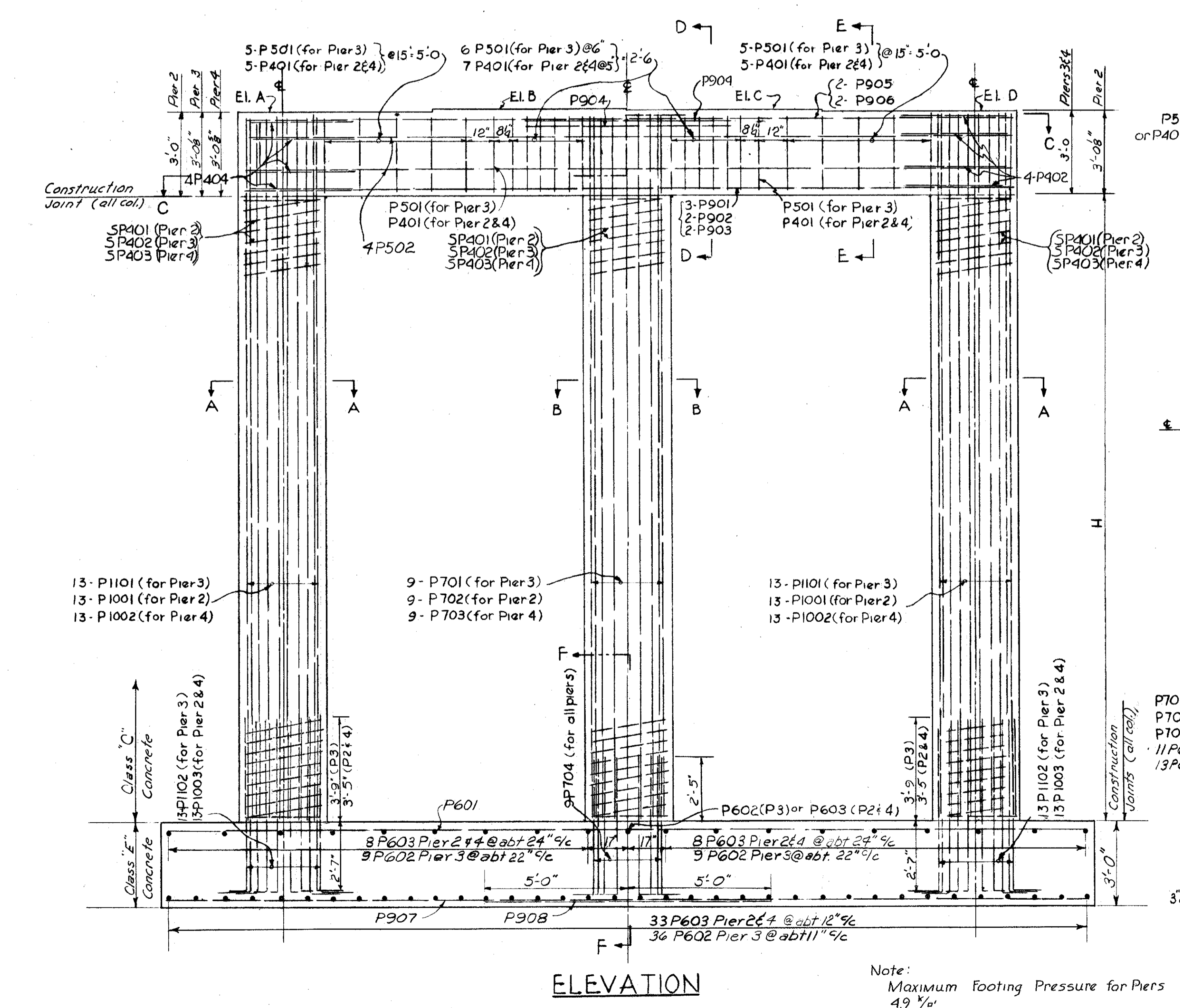
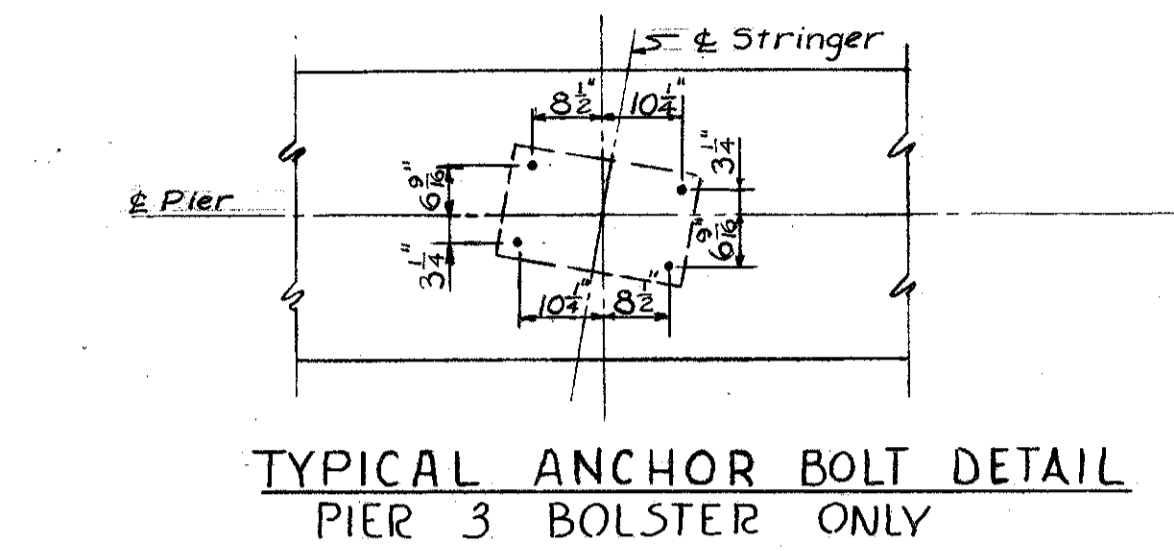
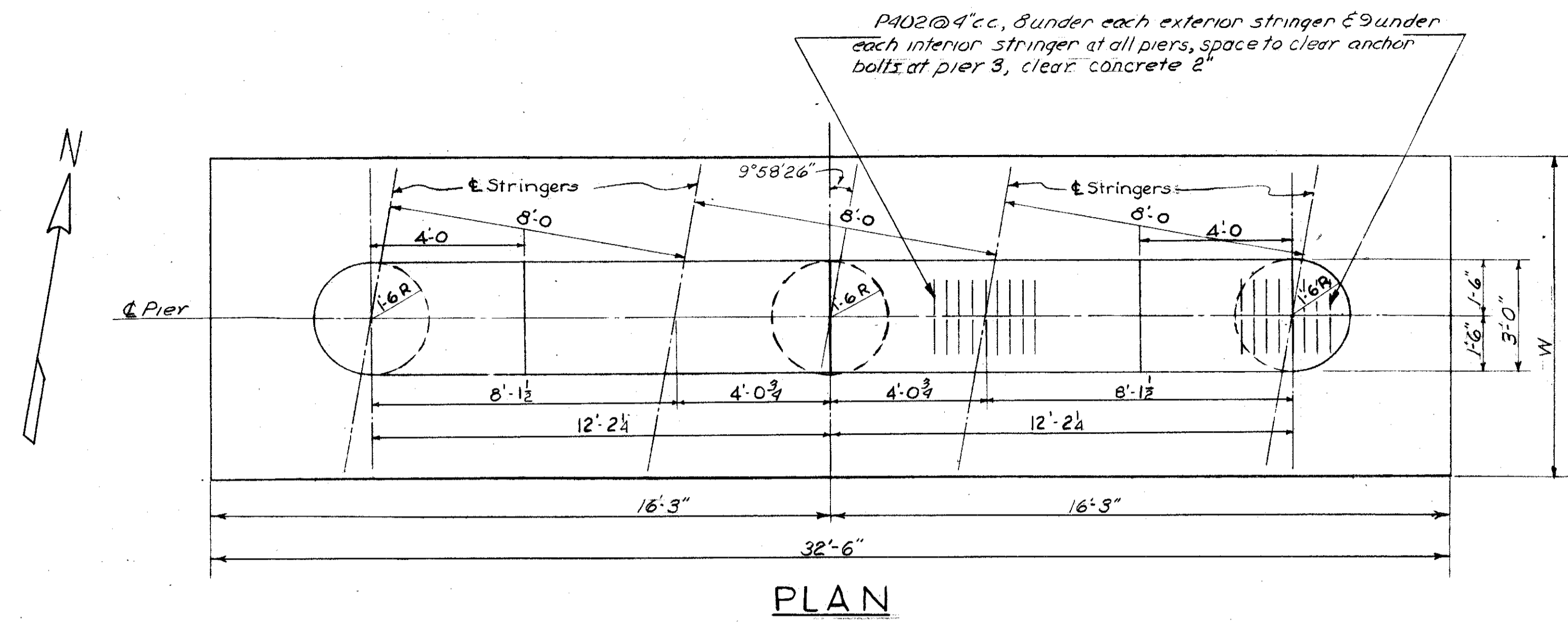
LAKE COUNTY
LAK-1-2651
ASHTABULA COUNTY
ATB-1-0.00

| | Elev. A | Elev. B | Elev. C | Elev. D | El. btm. fig. | W | H |
|--------|---------|---------|---------|---------|---------------|-------|------------|
| Pier 2 | 830.09 | 830.22 | 830.22 | 830.10 | 810.00 | 8'-6" | 14'-1/8" |
| Pier 3 | 830.23 | 830.35 | 830.35 | 830.22 | 810.50 | 9'-0" | 13'-8 3/8" |
| Pier 4 | 829.74 | 829.85 | 829.83 | 829.69 | 810.00 | 8'-6" | 13'-8 3/8" |

| REINFORCING STEEL LIST | | | | |
|------------------------|-----|--------|--------------|---------------|
| Mark | No. | Shape | Length | Weight |
| P101 | 26 | Str. | 16'-5" | 2268 |
| P102 | 26 | Bent-4 | 7'-1" | 978 |
| P1001 | 26 | Str. | 16'-9" | 1874 |
| P1002 | 26 | Str. | 16'-4" | 1827 |
| P1003 | 52 | Bent-4 | 6'-8" | 1492 |
| P901 | 9 | Str. | 26'-11" | 824 |
| P902 | 6 | Str. | 26'-4" | 537 |
| P903 | 6 | Str. | 24'-3" | 495 |
| P904 | 24 | Str. | 7'-0" | 571 |
| P905 | 6 | Bent-2 | 32'-3" | 658 |
| P906 | 6 | Bent-2 | 29'-9" | 607 |
| P907 | 35 | Str. | 32'-2" | 3828 |
| P908 | 32 | Str. | 10'-0" | 1088 |
| P701 | 9 | Str. | 16'-5" | 302 |
| P702 | 9 | Str. | 16'-9" | 308 |
| P703 | 9 | Str. | 16'-4" | 300 |
| P704 | 27 | Bent-4 | 5'-5" | 299 |
| P601 | 35 | Str. | 32'-2" | 1691 |
| P602 | 55 | Str. | 8'-8" | 716 |
| P603 | 100 | Str. | 8'-2" | 1227 |
| P501 | 24 | Bent-3 | 11'-8" | 292 |
| P502 | 12 | Str. | 24'-5" | 306 |
| P401 | 52 | Bent-3 | 11'-8" | 105 |
| P402 | 24 | Bent-1 | 10'-2" | 163 |
| P403 | 102 | Str. | 2'-0" | 136 |
| | | | Total | 23,192 |

| SPIRAL REINFORCING STEEL LIST | | | | | | | |
|-------------------------------|-----|------|-----------|--------|-------|--------------|--------------|
| Mark | No. | Size | Core Dia. | Length | Pitch | No. Turns | Weight |
| SP401 | 3 | 1/2" | 32" | 14.09 | 4 1/2 | 41 | 804 |
| SP402 | 3 | 1/2" | 32" | 13.72 | 4 1/2 | 40 | 784 |
| SP403 | 3 | 1/2" | 32" | 13.69 | 4 1/2 | 40 | 784 |
| | | | | | | Total | 2,372 |

Notes:
Spiral reinforcing bars shall not have deformations but shall in other respects conform to Item S-4.
Four steel channel, tee or angle spacers, weighing approximately 0.68 lb. per lin. ft. of spacer, shall be provided for each spiral unit. They shall be equally spaced along the periphery of the coil. The number of pounds of these spacers, based on 0.68 lb. per lin. ft., will be paid for as reinforcing steel and is included in the tabulated quantity of spiral bars.
The length shown in the steel list for the spiral bars is the distance from the top of the footing to the bottom of the pier cap.
The No. of Turns shown in the steel list for the spiral bars is the length divided by the Pitch, plus 3 turns (total number of closed coils), expressed as the nearest whole number.
1/2 closed coils shall be provided at the ends of each spiral unit.
Reinforcing steel shall clear the face of the concrete by 2" unless otherwise noted.



Note: Maximum Footing Pressure for Piers 49 1/2'

CHARLES L. BARBER AND ASSOCIATES
HARRY BALKE ENGINEERS
TOLEDO, OHIO

PIER DETAILS

BRIDGE NO. LAK-1-2641
SRI UNDER COUNTY LINE RD.
LAKE CO. STA. 119 + 07.39

| DESIGNED | DRAWN | TRACED | CHECKED | REVIEWED | DATE | REVISED |
|----------|-------|--------|---------|----------|---------|---------|
| DMS | CTL | | JB | A.C.A. | 8/28/57 | |