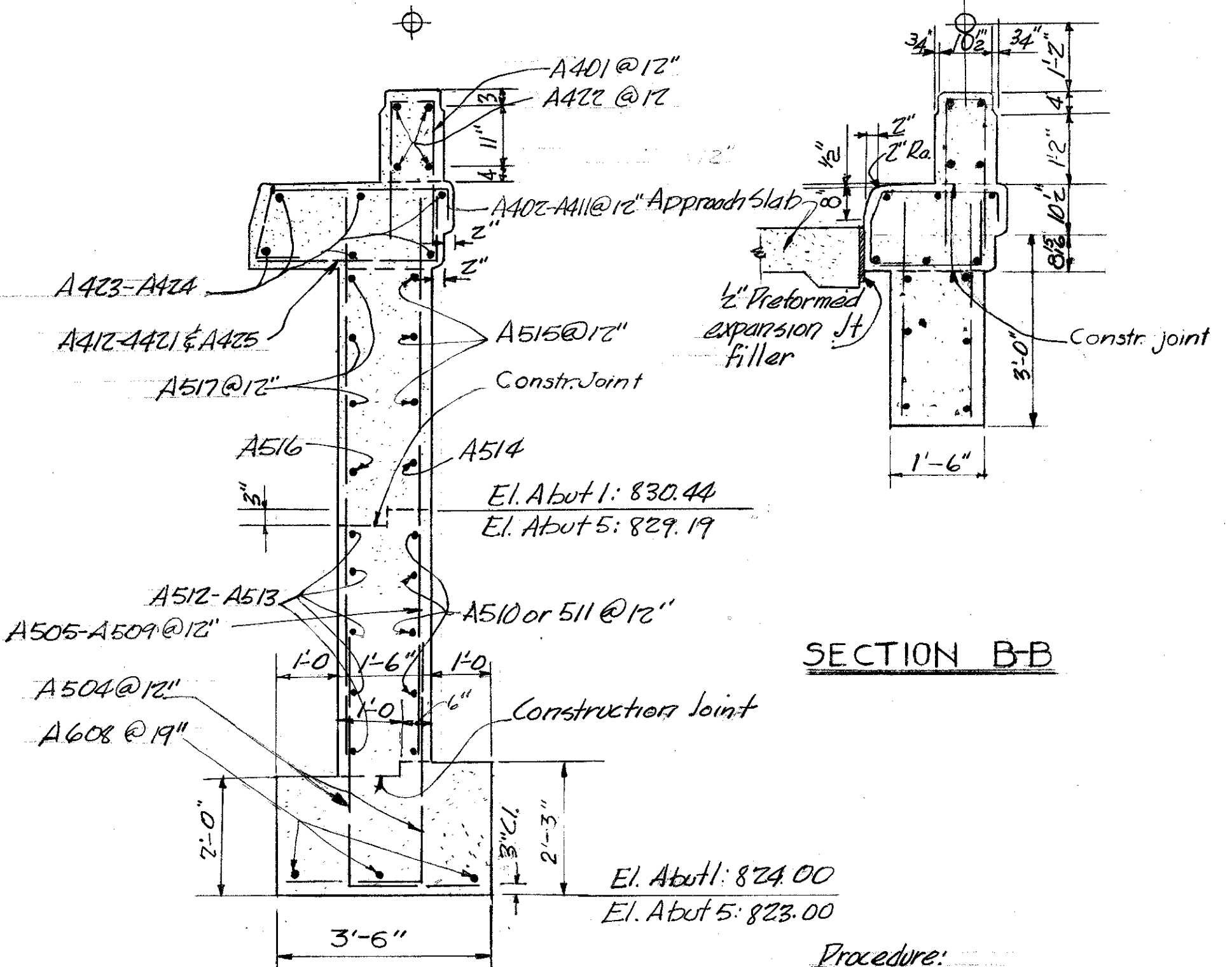
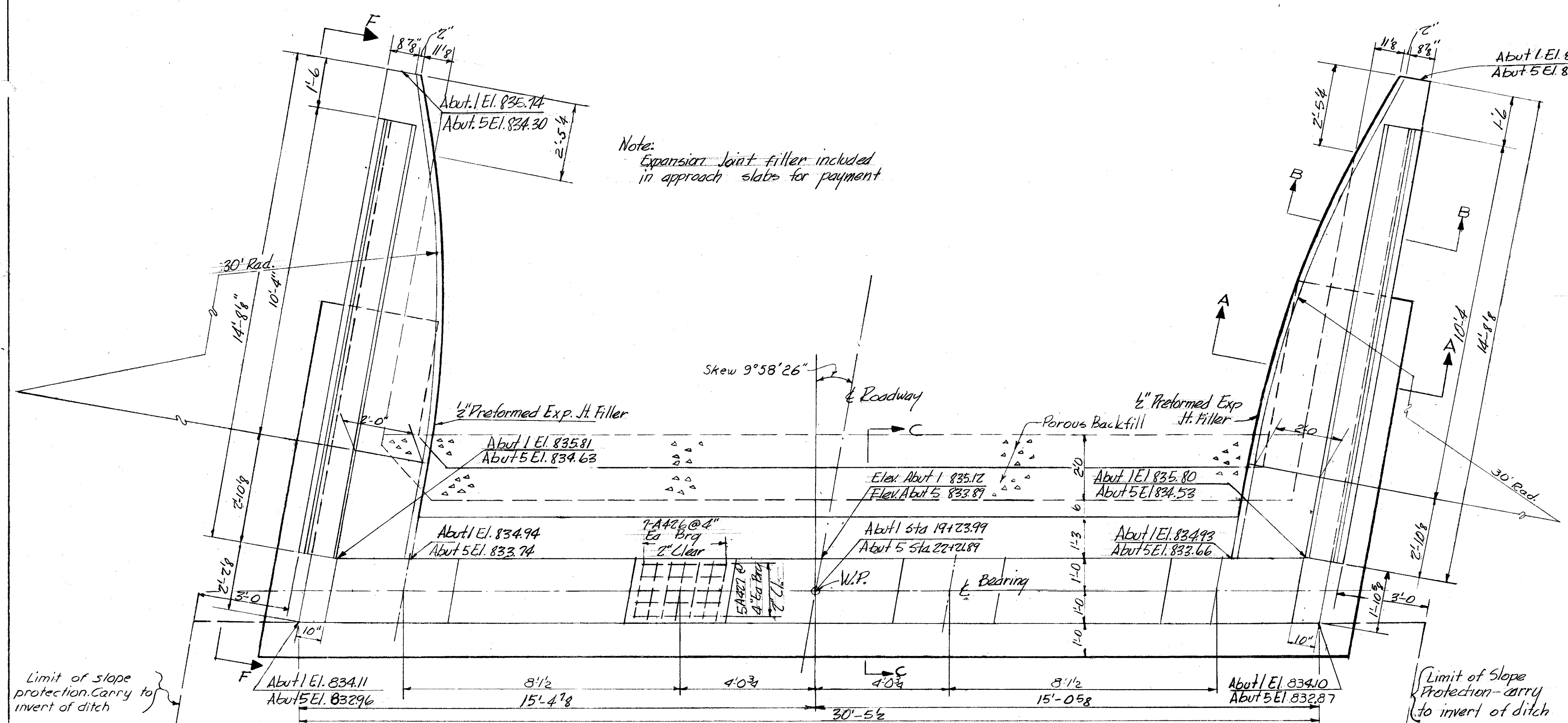
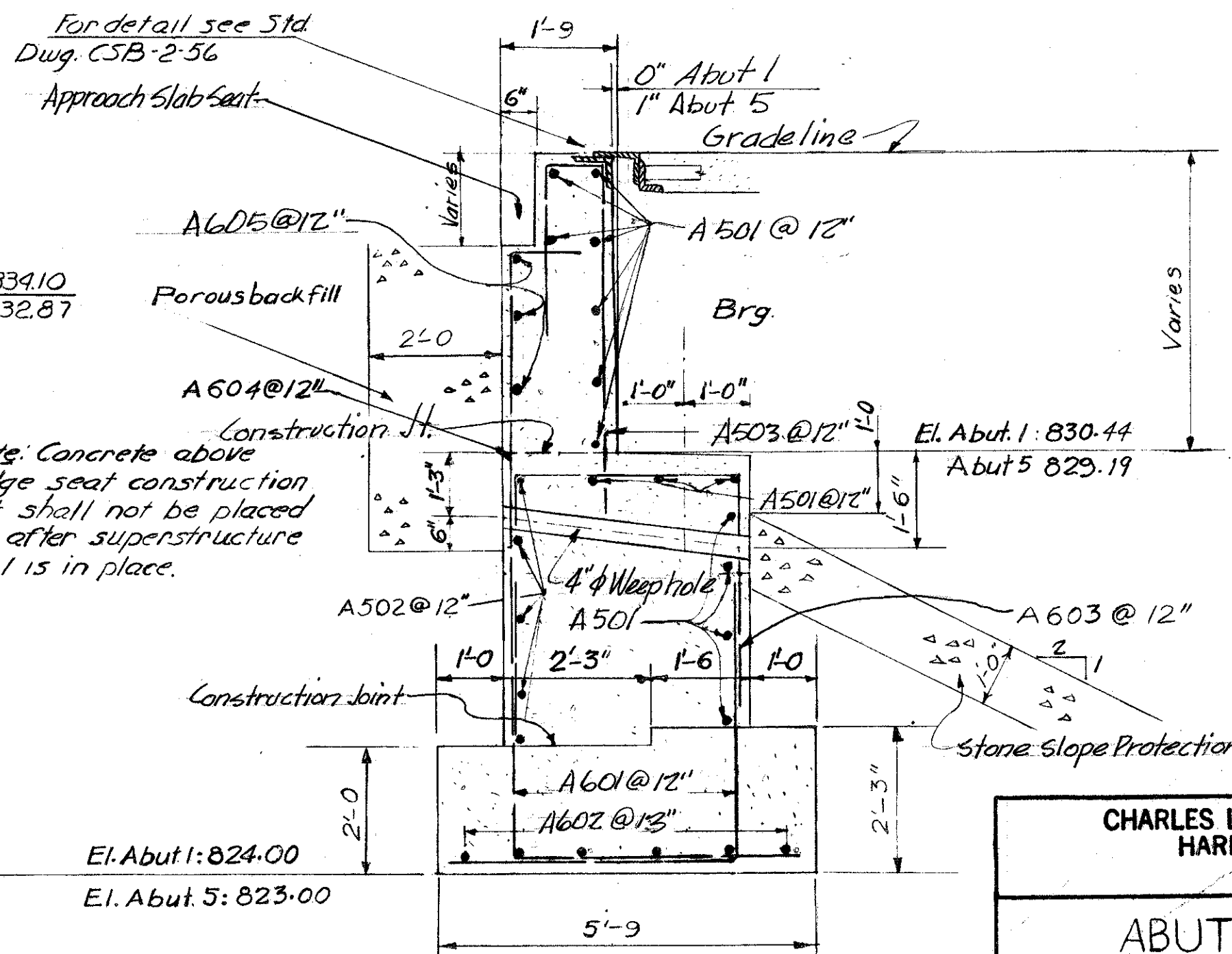
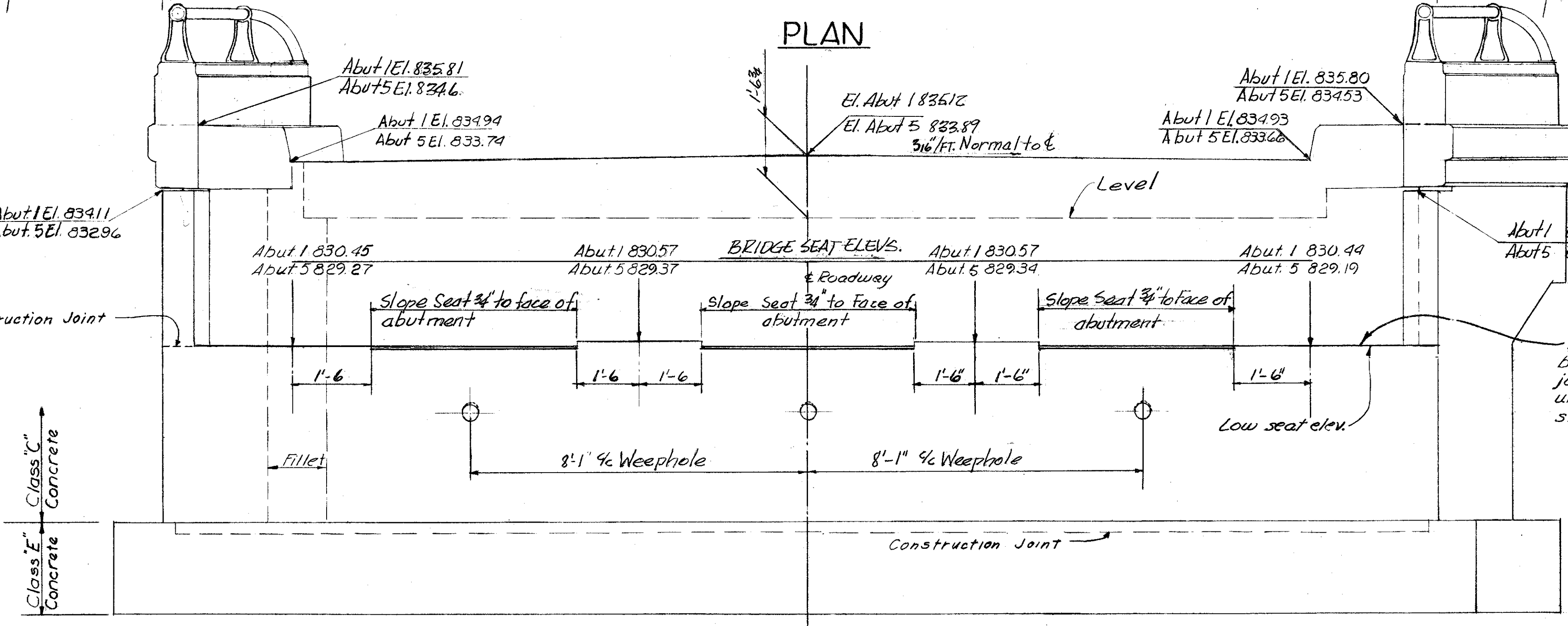


LAKE COUNTY
LAK-1-26.51
ASHTABULA COUNTY
ATB-1-0.00



Procedure:
The embankment shall be placed and compacted to subgrade elevation, after which excavation shall be made for the abutment



Note: Reinforcing steel shall clear the face of concrete 2" unless otherwise noted

ELEVATION

Note: Maximum Footing Pressure 3.1 k/ft²

CHARLES L. BARBER AND ASSOCIATES
HARRY BALKE ENGINEERS
TOLEDO, OHIO

ABUTMENT DETAILS

BRIDGE N° LAK-1-2841
SR 1 UNDER COUNTY LINE RD.
LAKE CO. SR 1
STA 119+07.39

DESIGNED	DRAWN	TRACED	CHECKED	REVIEWED	DATE	REVISED
LTT	MS		JPR	ACA	8/29/77	