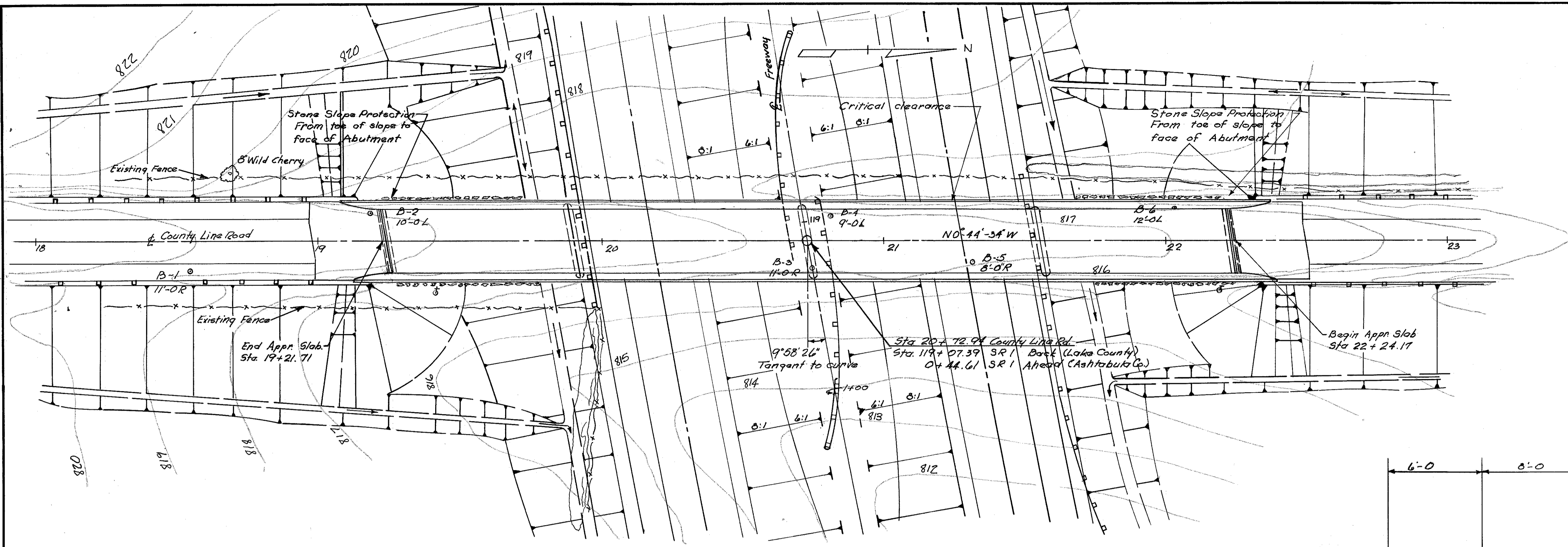


| FED. RD. DIVISION | STATE | FED. AID PROJECT | FISCAL YEAR |
|-------------------|-------|------------------|-------------|
| 2 | OHIO | I-1103 (15) | 1976 |

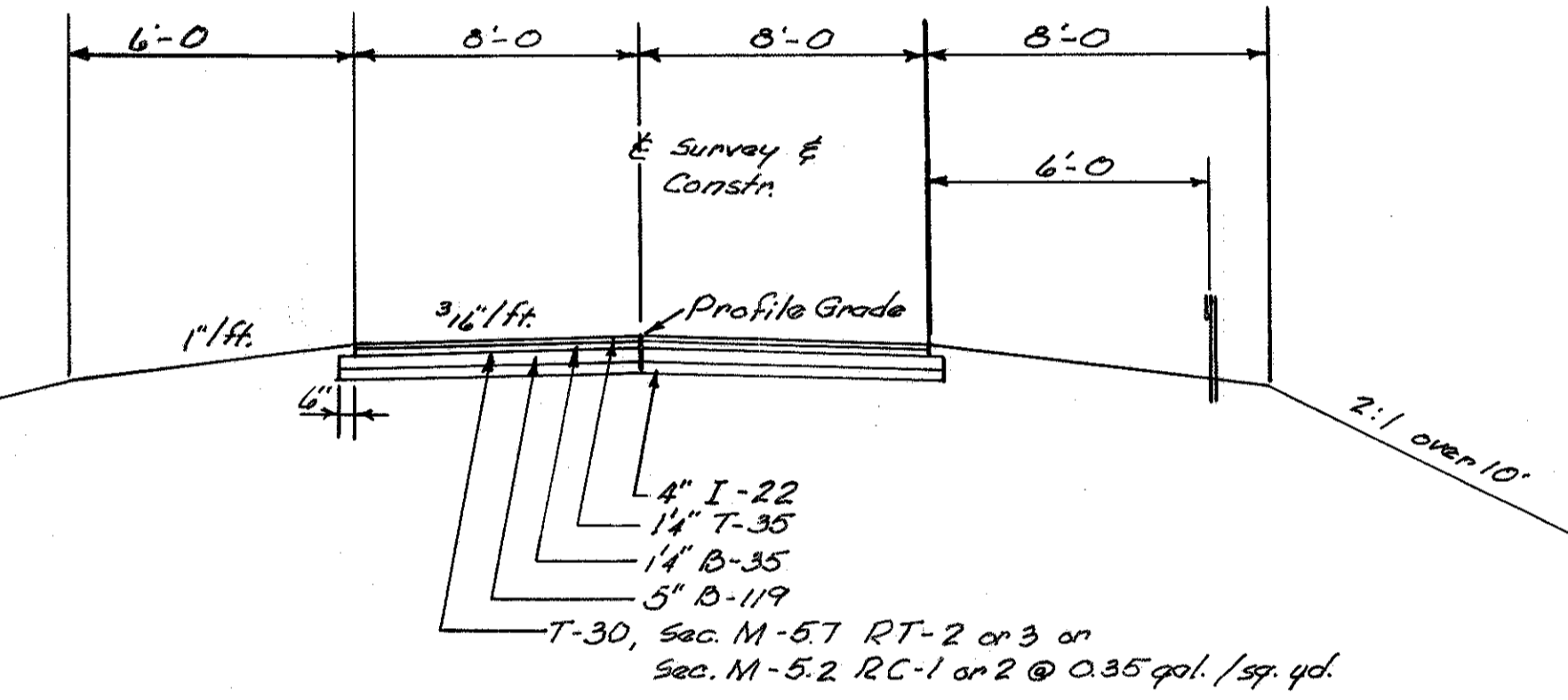
138
176

LAKE COUNTY
LAK-1-26.51
ASHTABULA COUNTY
ATB-1-0.00

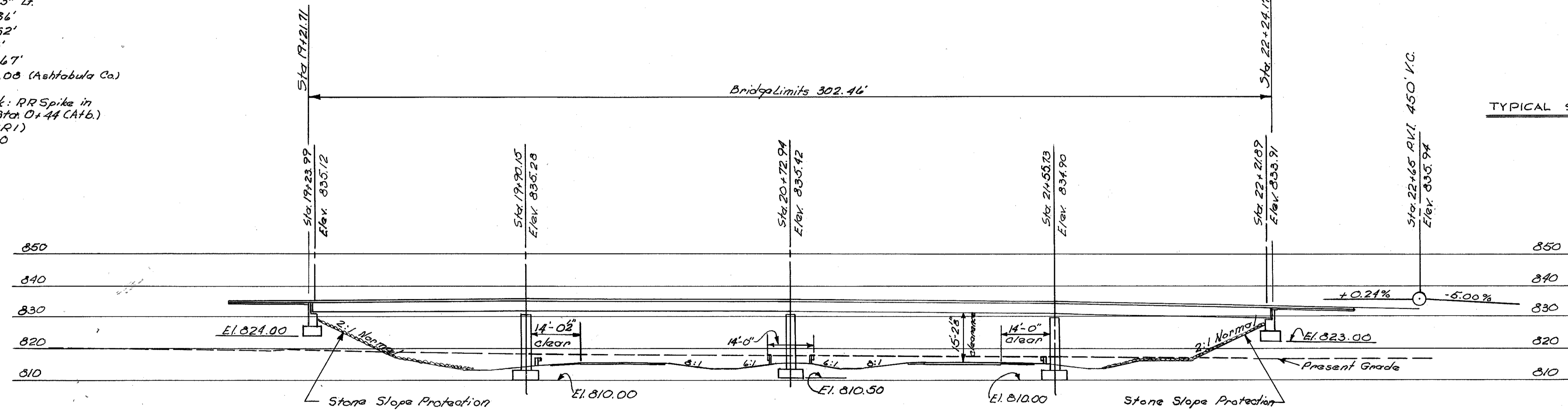


SR1 CURVE DATA
D= 0° 28'
Δ= 16° 37' 53" Lt.
L_a = 3543.86'
T = 1794.62'
E = 130.45'
R = 12277.67'
D.I. = 5100.08 (Ashtabula Co.)

Barack Mark: RR Spike in
24" Maple 300' O+44 (C+16)
201 Lt. (SR1)
Elev. 818.640



| PROPOSED STRUCTURE | |
|--------------------|---|
| Type: | Continuous Steel Beam with Reinforced Concrete Deck and Substructure. |
| Spans: | 66'-1 1/8" 82'-9 1/2" 82'-9 1/2" 66'-1 1/8" 9/8 Brg. |
| Roadway: | 24'-0" 1/2" Safety Curbs |
| Load Frequency: | C.F. = 130 (51) |
| Skew: | 9° 58'-26" RT |
| Wearing Surface: | 3" Monolithic Conc. |
| Approach Slabs: | 25'-0" Long |
| Alignment: | Tangent |
| Safety Curbs: | 2'-0" each side |



NOTES
Foundation Soundings - Foundation design and foundation quantities are based on a study of soil sampling soundings made at the site. This sounding information may be inspected at the Interstate Projects Office in Columbus or in the Division office, but the State assumes no responsibility for the accuracy thereof.

1955 TRAFFIC - 420 VPD with under 30 combination trucks.

CHARLES L. BARBER AND ASSOCIATES
HARRY BALKE ENGINEERS
TOLEDO, OHIO

SITE PLAN

BRIDGE NO LAK-1-2641
SR1 UNDER COUNTY LINE RD.
LAKE CO. STA. 119+07.39

SCALE 1" = 20'-0"

| PRESENT TOPOGRAPHY | | PROPOSED WORK | | | |
|--------------------|-------|---------------|-------|---------|----------|
| SURVEYED | DRAWN | DESIGNED | DRAWN | CHECKED | REVIEWED |
| VAL | LTT | LTT | DKM | DKM | ACA |