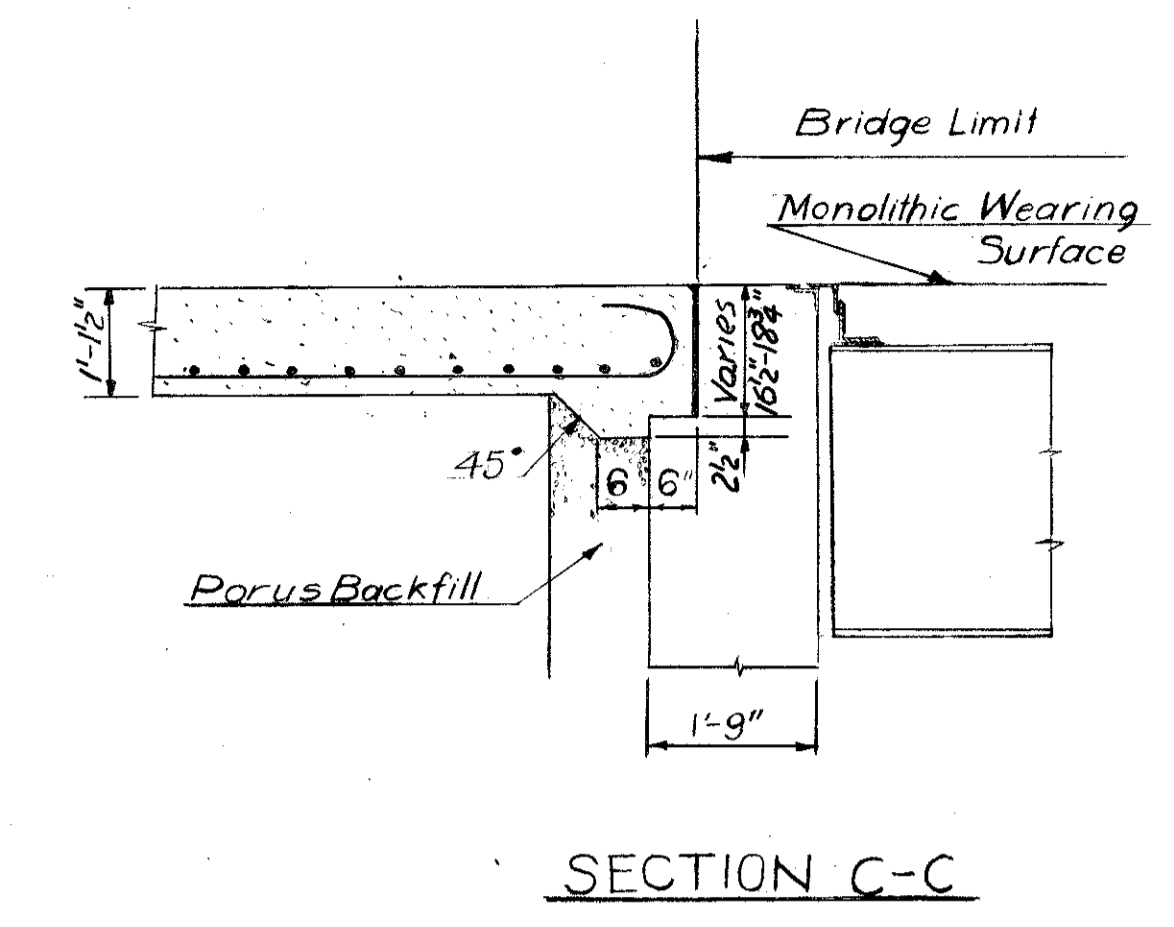
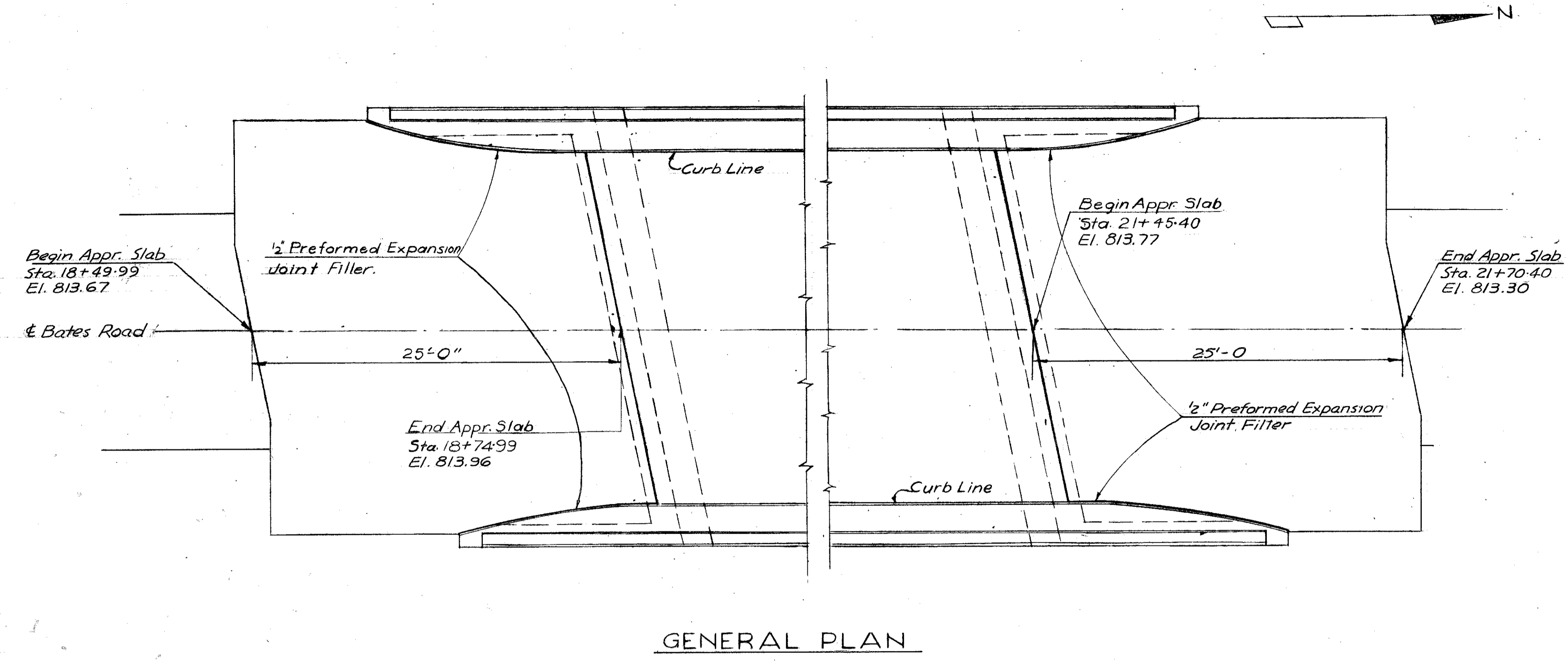


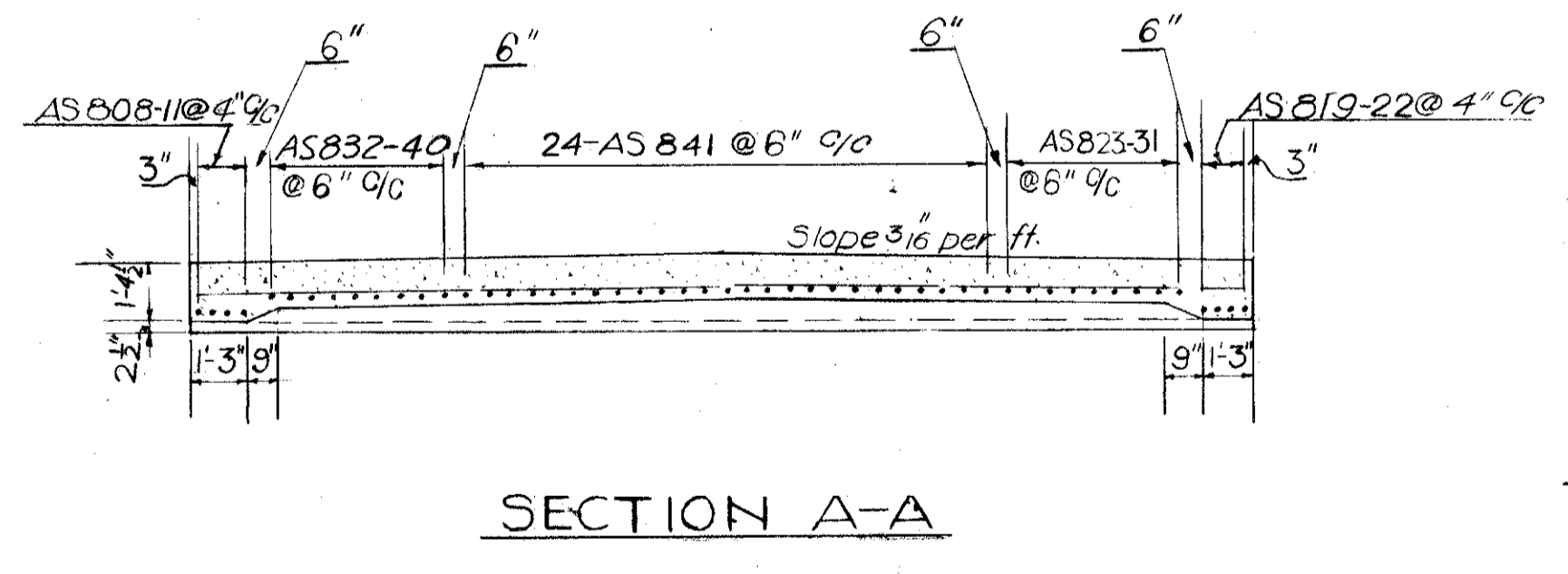
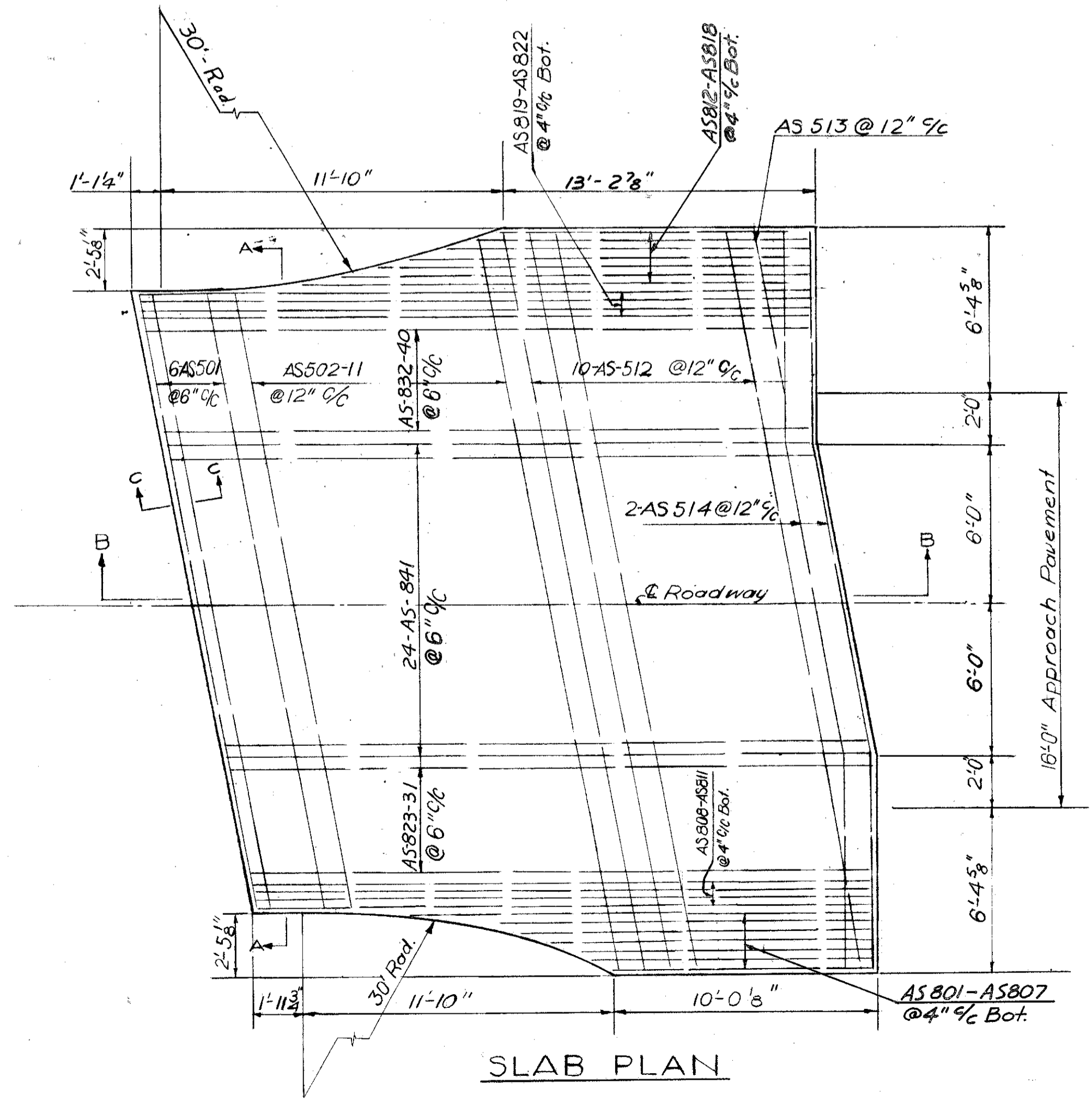
LAKE COUNTY  
LAK-1-26.51  
ASHTABULA COUNTY  
ATB-1-0.00



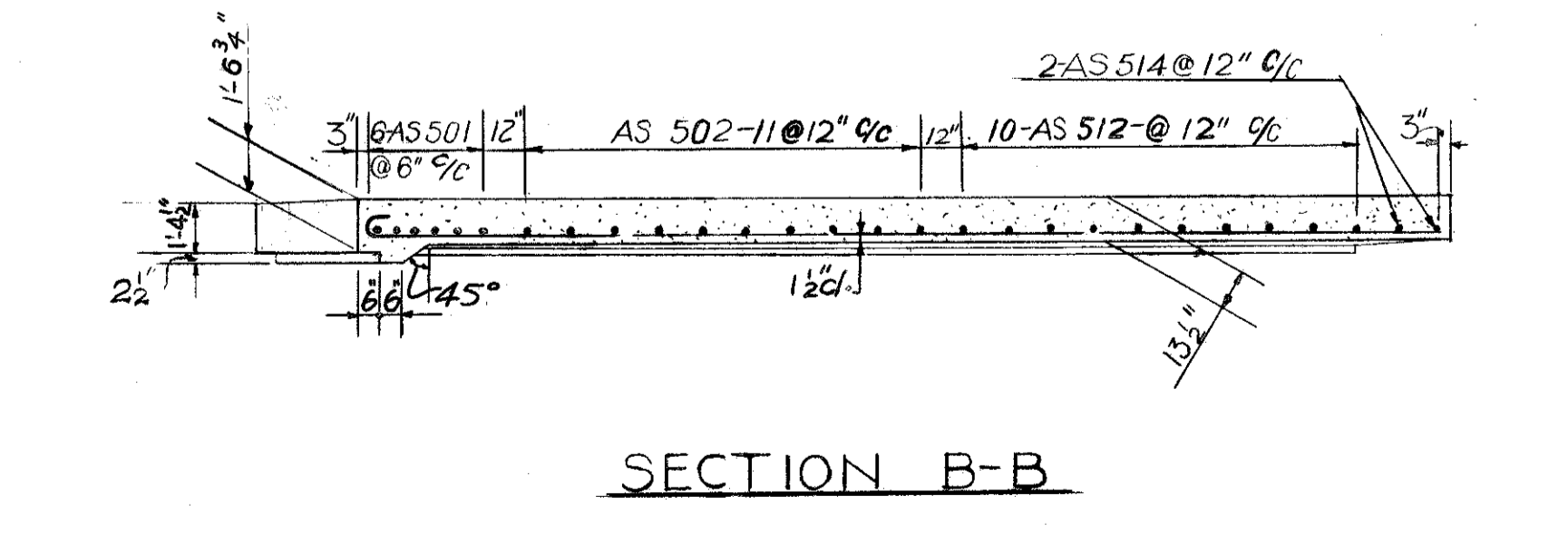
**\* NOTE:** - This Reinforcing Steel is included in the item "Reinforced Concrete Approach Slab Item I-7" and is not paid for separately.

**REINFORCING STEEL LIST \***

BOTH APPROACH SLABS					
MARK	LENGTH	SHAPE	NO	WT.	BAR DIAGRAM
AS 501	24'-0"	Str.	12	300	
AS 502	24'-1"	Str.	2	50	
AS 503	24'-3"	Str.	2	51	
AS 504	24'-7"	Str.	2	51	
AS 505	25'-1"	Str.	2	52	
AS 508	25'-3"	Str.	2	53	
AS 507	25'-8"	Str.	2	54	
AS 508	26'-2"	Str.	2	55	
AS 509	26'-8"	Str.	2	56	
AS 510	27'-5"	Str.	2	57	
AS 511	28'-2"	Str.	2	59	
AS 512	29'-0"	Str.	20	60	
AS 513	8'-5"	Str.	2	18	
AS 514	28'-6"	Bent	4	119	
AS 801	9'-7"	Str.	2	51	
AS 802	10'-11"	Str.	2	58	
AS 803	12'-0"	Str.	2	64	
AS 804	13'-0"	Str.	2	69	
AS 805	14'-1"	Str.	2	75	
AS 806	15'-9"	Str.	2	84	
AS 807	17'-5"	Str.	2	93	
AS 808-9	24'-7"	Bent	4	263	
AS 810-11	24'-9"	Bent	4	264	
AS 812	20'-10"	Str.	2	111	
AS 813	18'-8"	Str.	2	100	
AS 814	17'-0"	Str.	2	91	
AS 815	16'-0"	Str.	2	85	
AS 816	15'-0"	Str.	2	80	
AS 817	14'-0"	Str.	2	75	
AS 818	12'-10"	Str.	2	69	
AS 819-20	26'-10"	Bent	4	287	
AS 821-22	28'-8"	Bent	4	306	
AS 823	24'-11"	Bent	2	133	
AS 824	25'-0"	Bent	2	134	
AS 825	25'-1"	Bent	2	134	
AS 826	25'-3"	Bent	2	135	
AS 827	25'-4"	Bent	2	135	
AS 828	25'-5"	Bent	2	136	
AS 829	25'-6"	Bent	2	136	
AS 830	25'-7"	Bent	2	137	
AS 831	25'-8"	Bent	2	137	
AS 832	25'-10"	Bent	2	138	
AS 833	25'-11"	Bent	2	138	
AS 834	26'-0"	Bent	2	139	
AS 835	26'-1"	Bent	2	139	
AS 836	26'-2"	Bent	2	140	
AS 837	26'-3"	Bent	2	140	
AS 838	26'-4"	Bent	2	141	
AS 839	26'-6"	Bent	2	142	
AS 840	26'-7"	Bent	2	142	
AS 841	25'-9"	Bent	48	3300	
Total.				9036	



**Notes:** Approach slabs to be class "C" concrete. In the reinforcing steel bar marks, the numeral following the second letter is the Bar Number which indicates the size of the bar.



**Note:** 1/2" Preformed expansion joint filler included in Item I-7 for payment.

STATION TO STATION	REINFORCED CONCRETE APPROACH SLABS ITEM I-7
18+49.99-18+74.99	77 Sq. yd.
21+45.40-21+70.40	77 Sq. yd.
TOTAL	154 Sq. yd.

CHARLES L. BARBER AND ASSOCIATES  
HARRY BALKE ENGINEERS  
TOLEDO, OHIO

**APPROACH SLAB DETAILS**  
BRIDGE NO LAK-1-2696  
SRI UNDER BATES RD  
LAKE CO. SR 1  
STA. 42+78.69

DESIGNED	DRAWN	TRACED	CHECKED	REVIEWED	DATE	REVISED
R.T.S.	M.S.		J.P.R.	A.C.A.	8/28/57	