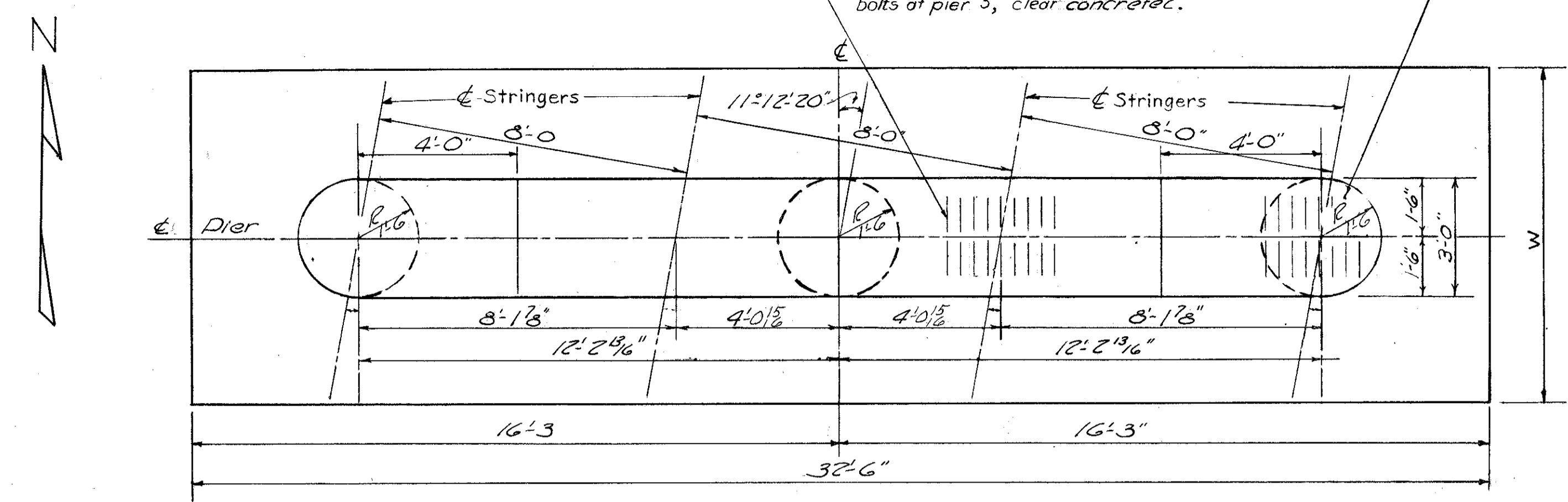


LAKE COUNTY
LAK-1-26.51
ASHTABULA COUNTY
ATB-1-0.00

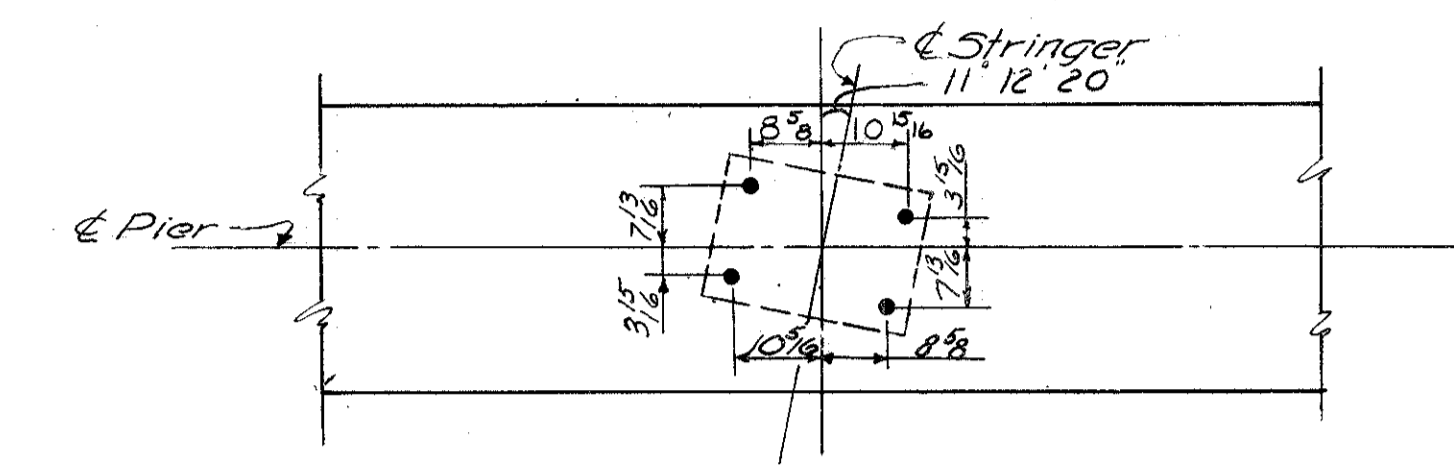
Note:
All quantities shown for reinforcing steel are for three (3) Piers

Note:
P402 @ 4" cc., 8 under each exterior stringer & 9 under each interior stringer at all piers, space to clear anchor bolts of pier 3, clear concrete.



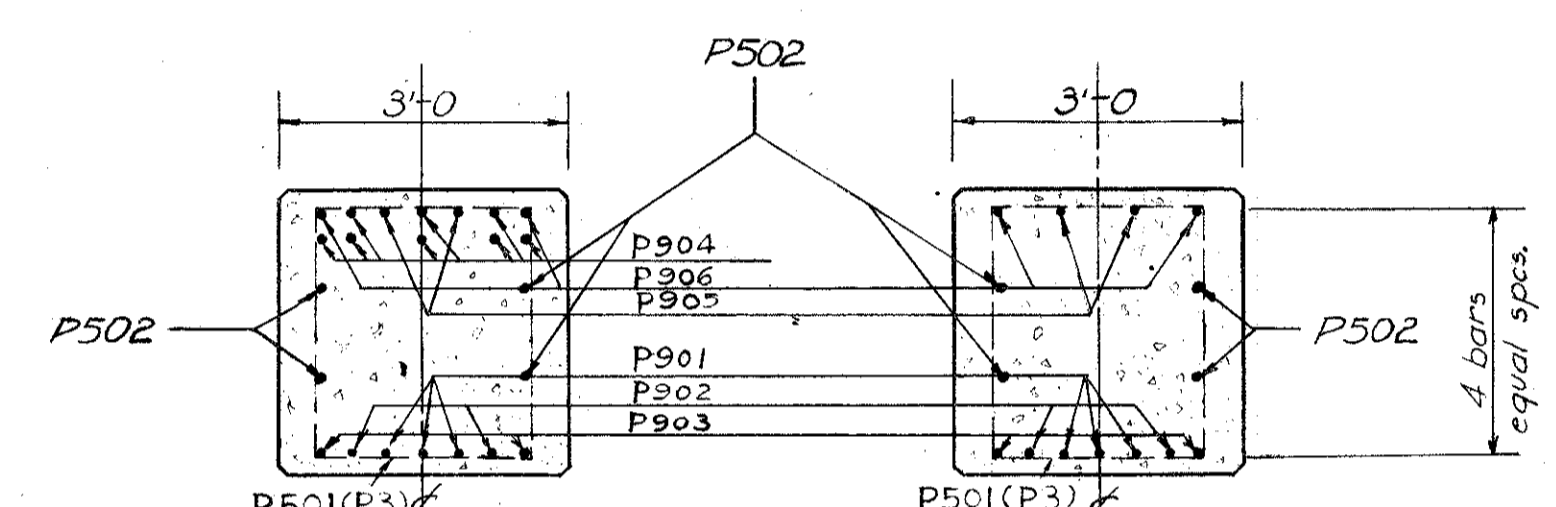
PLAN

	Elev. A	Elev. B	Elev. C	Elev. D	Elev. Bot. Flg.	W.	H.
Pier 2	809.34	809.48	809.50	809.39	789.50	9'-0"	13'-10 1/8"
Pier 3	809.64	809.76	809.76	809.64	790.00	9'-9"	13'-7 1/2"
Pier 4	809.33	809.44	809.42	809.28	789.50	9'-0"	13'-9 1/8"



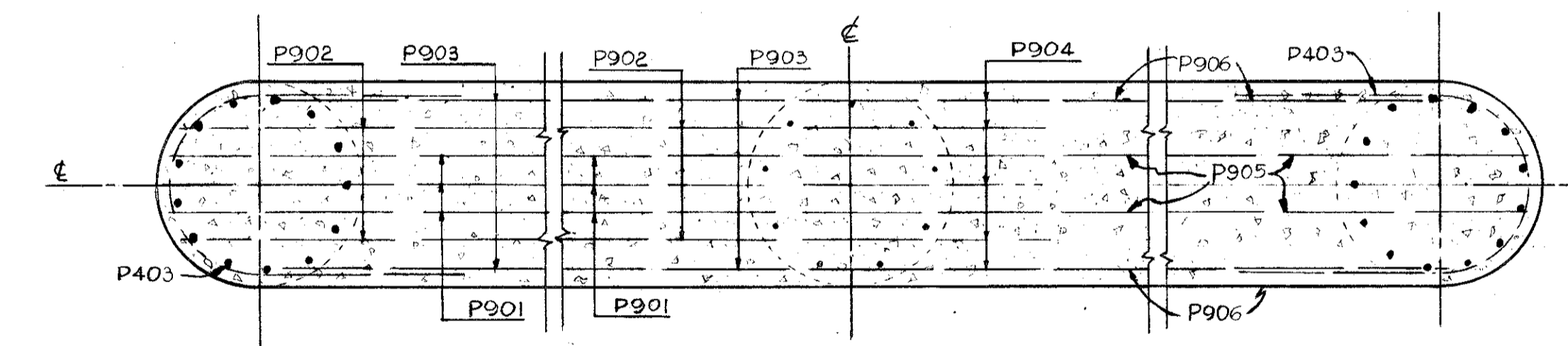
TYPICAL ANCHOR BOLT DETAIL

B-200 BOLSTERS PIER 3

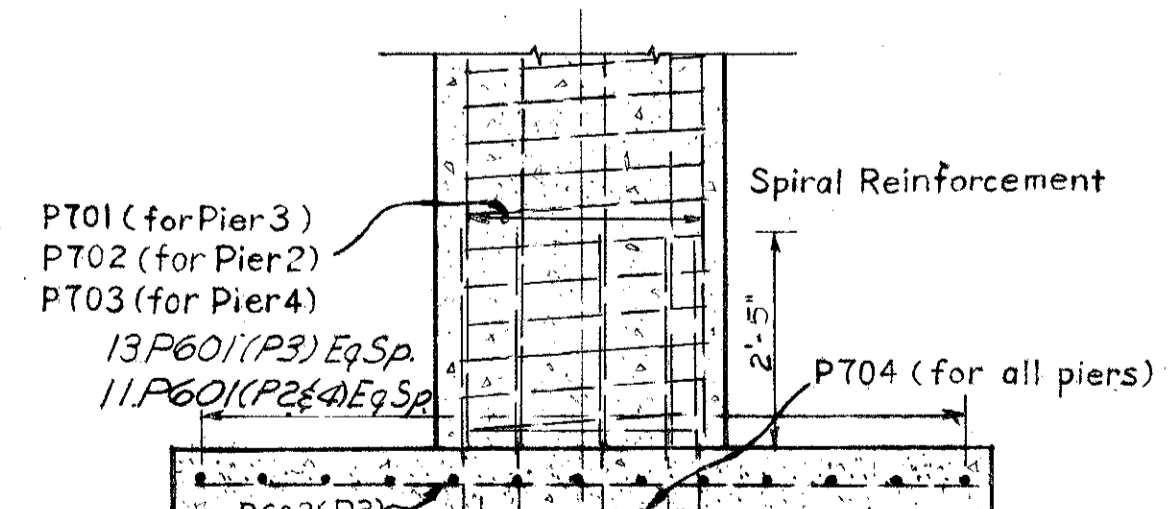


SECTION D-D

SECTION E-E

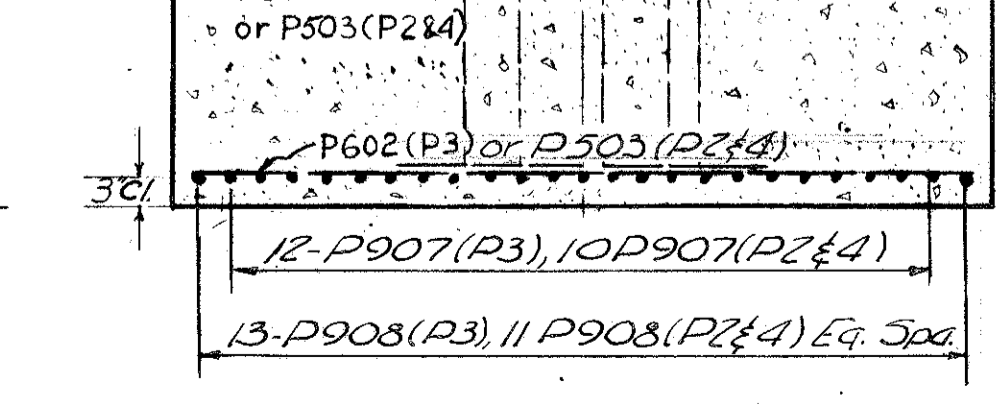


SECTION C-C



SECTION A-A

SECTION B-B

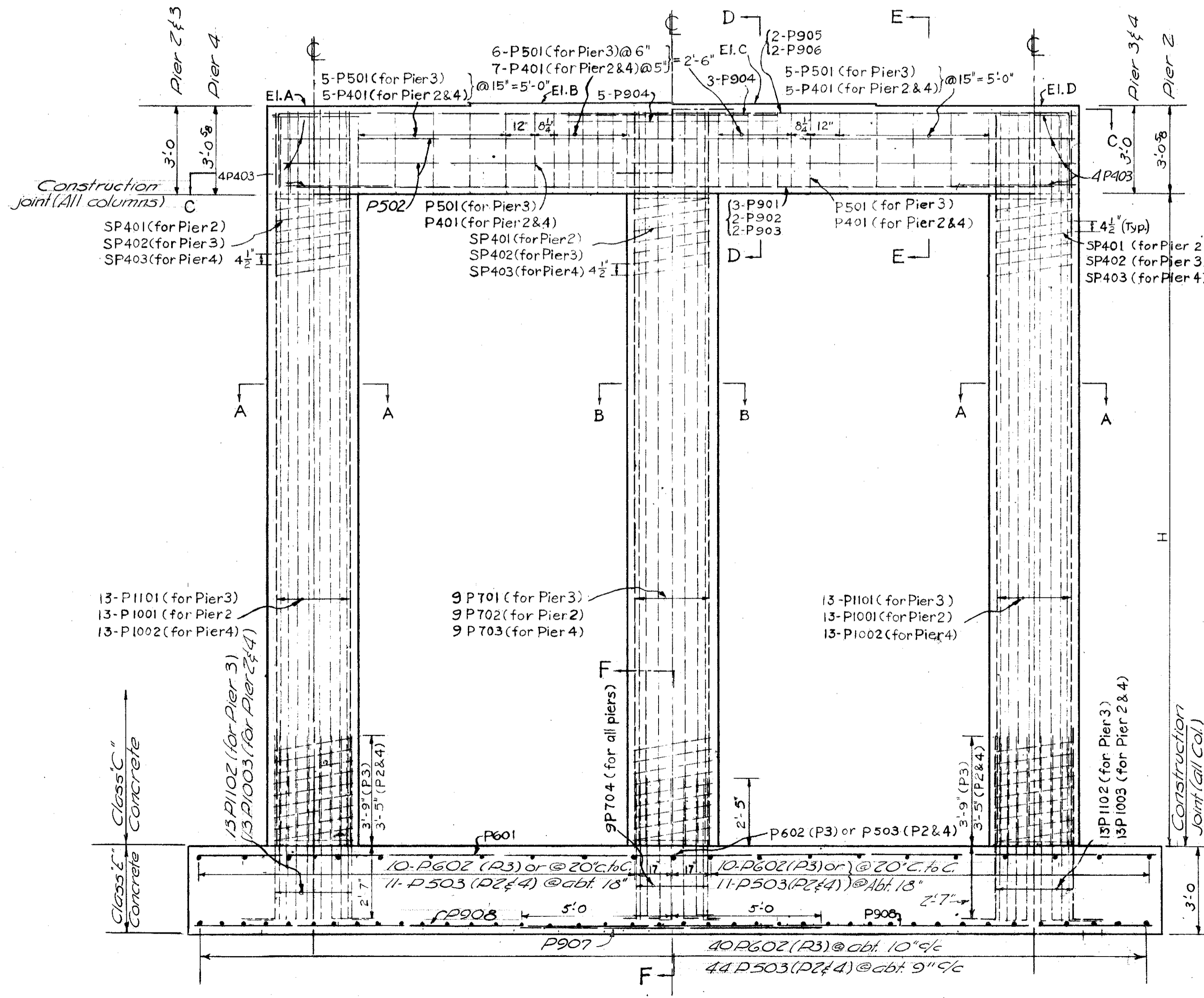


SECTION F-F

REINFORCING STEEL LIST				
Mark	No.	Shape	Length	Weight
P1101	26	Str.	16'-4"	2256
P1102	26	Bent-4	7'-1"	378
P1001	26	Str.	16'-6"	1846
P1002	26	Str.	16'-5"	1837
P1003	52	Bent-4	6'-8"	1492
P901	9	Str.	26'-11"	824
P902	6	Str.	26'-6"	541
P903	6	Str.	24'-3"	495
P904	24	Str.	7'-0"	571
P905	6	Bent-2	32'-3"	658
P906	6	Bent-2	29'-11"	610
P907	32	Str.	10'-0"	1088
P908	35	Str.	32'-2"	3828
<hr/>				
P701	9	Str.	16'-4"	300
P702	9	Str.	16'-6"	304
P703	9	Str.	16'-5"	302
P704	27	Bent-4	5'-5"	299
P601	35	Str.	32'-2"	1691
P602	61	Str.	9'-5"	863
<hr/>				
P501	24	Bent-3	11'-8"	292
P502	12	Str.	24'-5"	306
P503	134	Str.	8'-8"	1212
P401	52	Bent-3	11'-8"	405
P402	102	Str.	2'-0"	136
P403	24	Bent-1	10'-2"	163
			Total	23,297

SPIRAL REINFORCING STEEL LIST							
Mark	NO	Size	Length	Pitch	No. Turns	Weight	
SP401	3	1/2" #	2'	13.84	4 1/2	785	
SP402	3	1/2" #	2'	13.64	4 1/2	766	
SP403	3	1/2" #	2'	13.78	4 1/2	784	
						Total	2335

Notes:
Spiral reinforcing bars shall not have deformations but shall in other respects conform to Item 5-4.
Four steel channel, tee or angle spacers, weighing approximately 0.68 lb. per lin. ft. of spacer, shall be provided for each spiral unit. They shall be equally spaced along the periphery of the coil. The number of pounds of these spacers, based on 0.68 lb. per lin. ft., will be paid for as reinforcing steel and is included in the tabulated quantity of spiral bars.
The length shown in the steel list for the spiral bars is the distance from the top of the footing to the bottom of the pier cap.
The No Turns shown in the steel list for the spiral bars is the length divided by the Pitch, plus 3 turns (total number of closed coils), expressed as the nearest whole number.
Reinforcing steel shall clear the face of the concrete by 2", unless otherwise noted.
1/2 closed coils shall be provided at the ends of each spiral unit.



ELEVATION

Note:
Maximum Footing Pressure for Piers 4.5 ksf

CHARLES L. BARBER AND ASSOCIATES
HARRY BALKE ENGINEERS
TOLEDO, OHIO

PIER DETAILS

BRIDGE NO LAK-1-2696
SR 1 UNDER BATES RD.
LAKE COUNTY SR 1
STA. 42+78.69

DESIGNED	DRAWN	TRACED	CHECKED	REVIEWED	DATE	REVISED
D.M.S.C.T.L.			J.B.	A.C.A.	8/28/57	