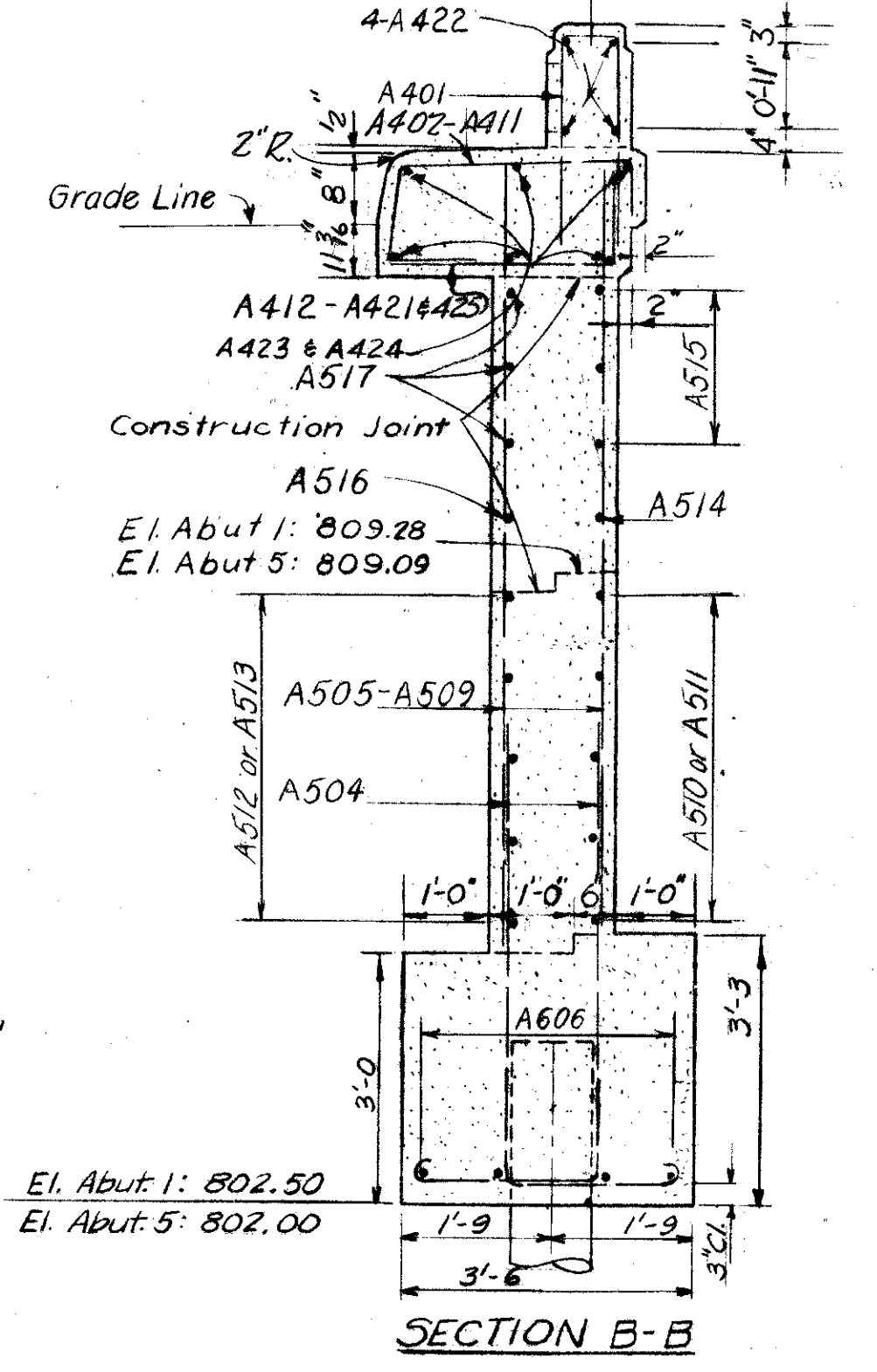
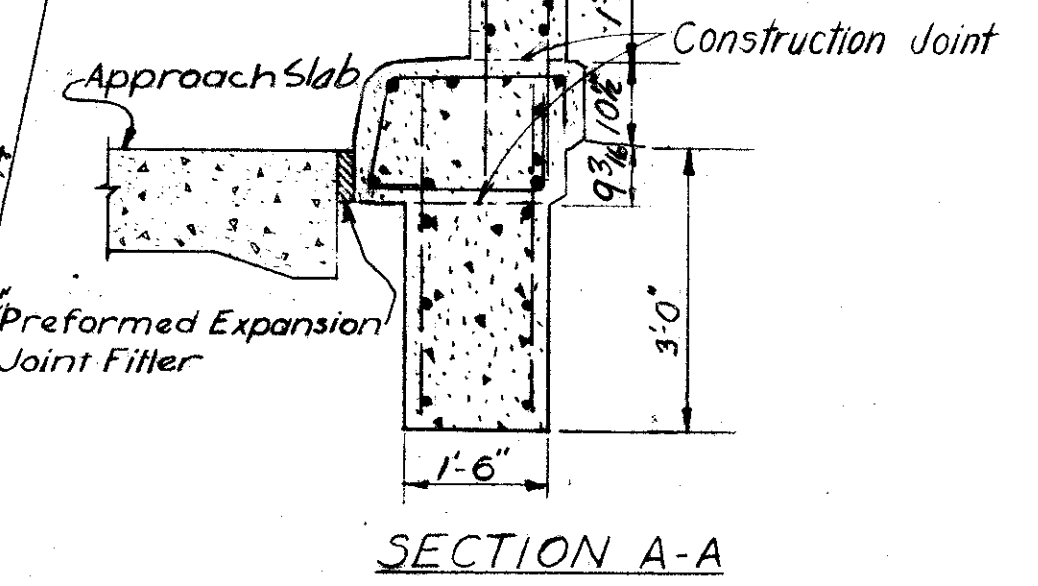
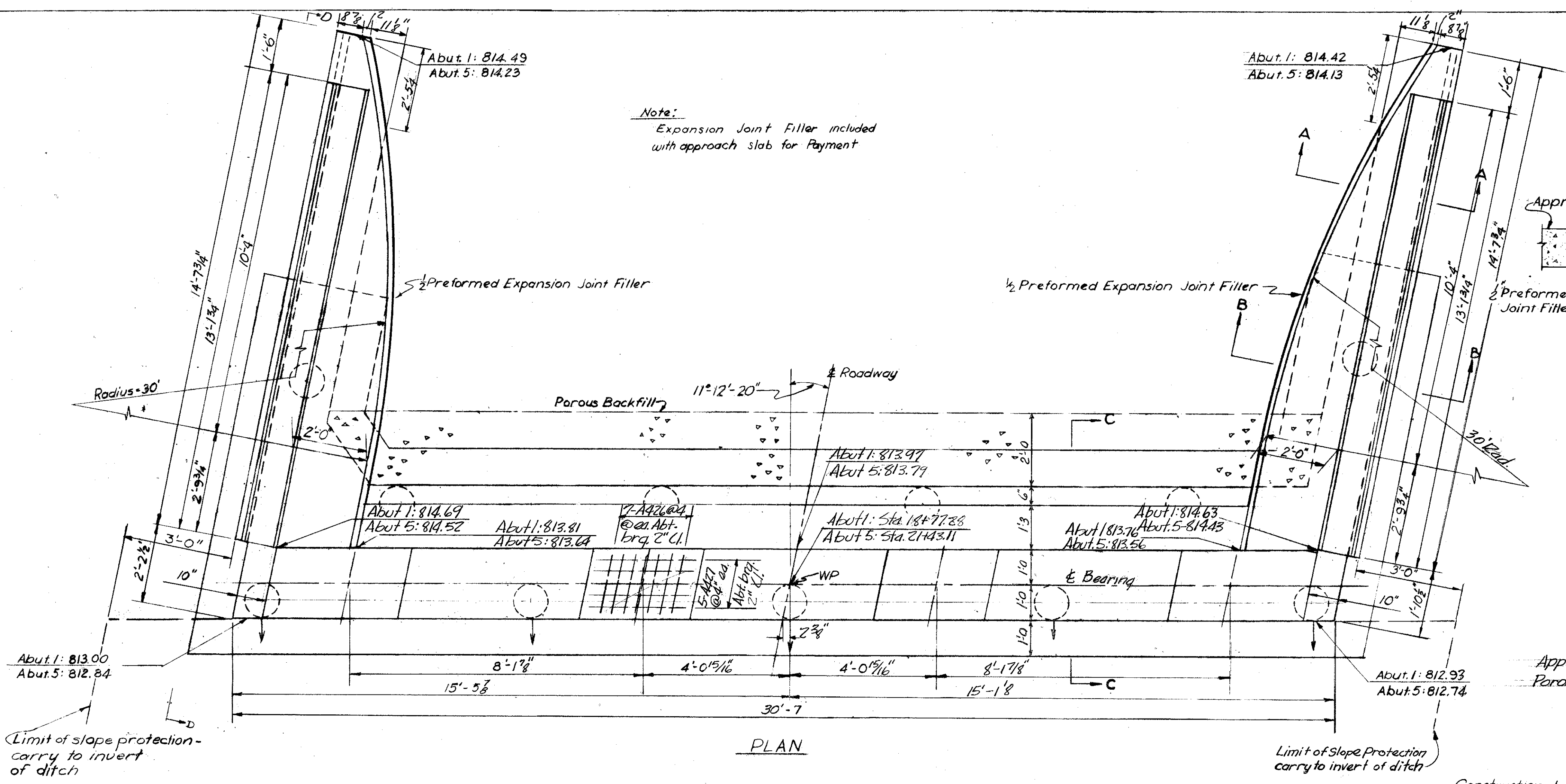
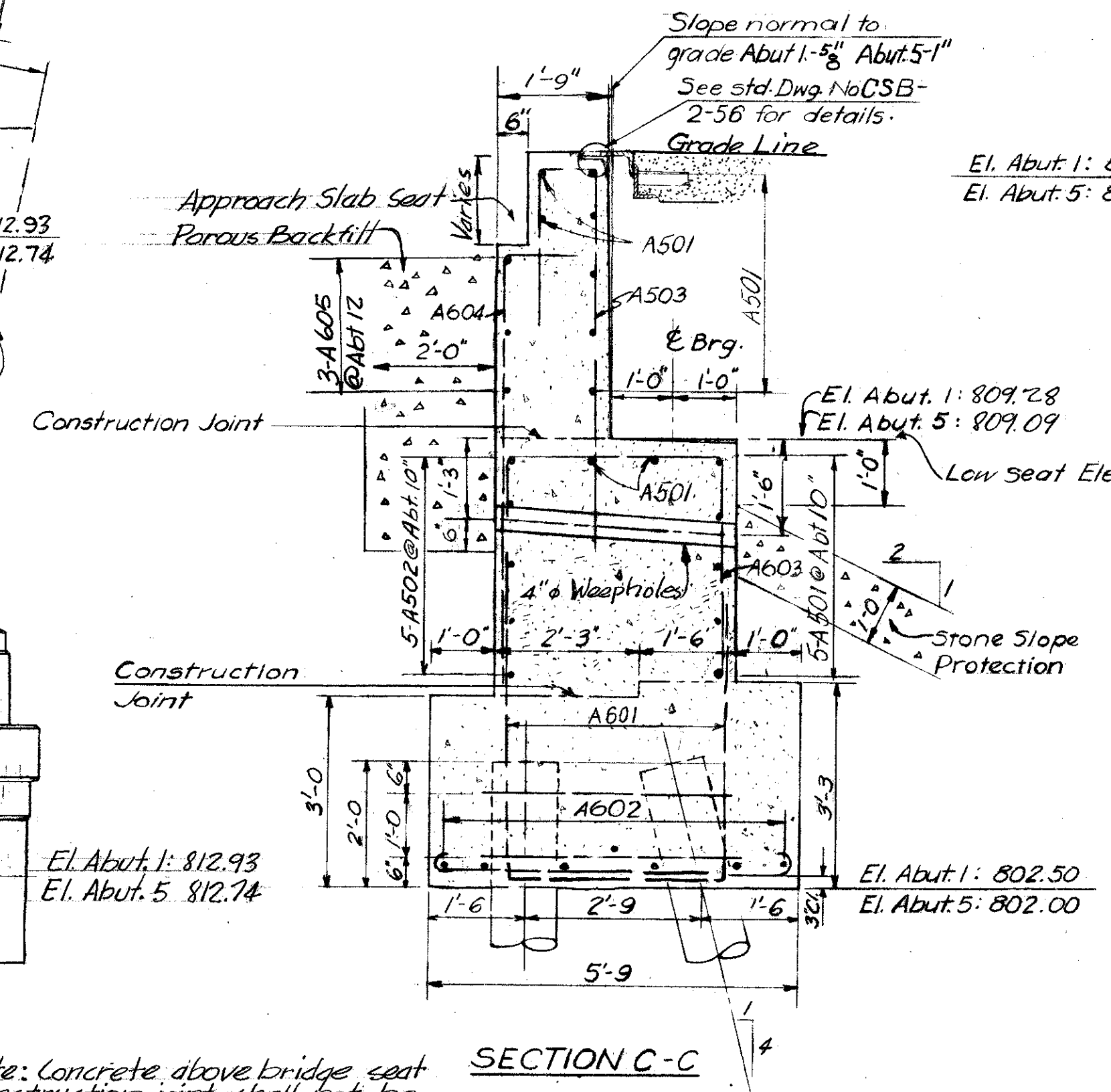


LAKE COUNTY  
LAK-1-26.51  
ASHTABULA COUNTY  
ATB-1-0.00

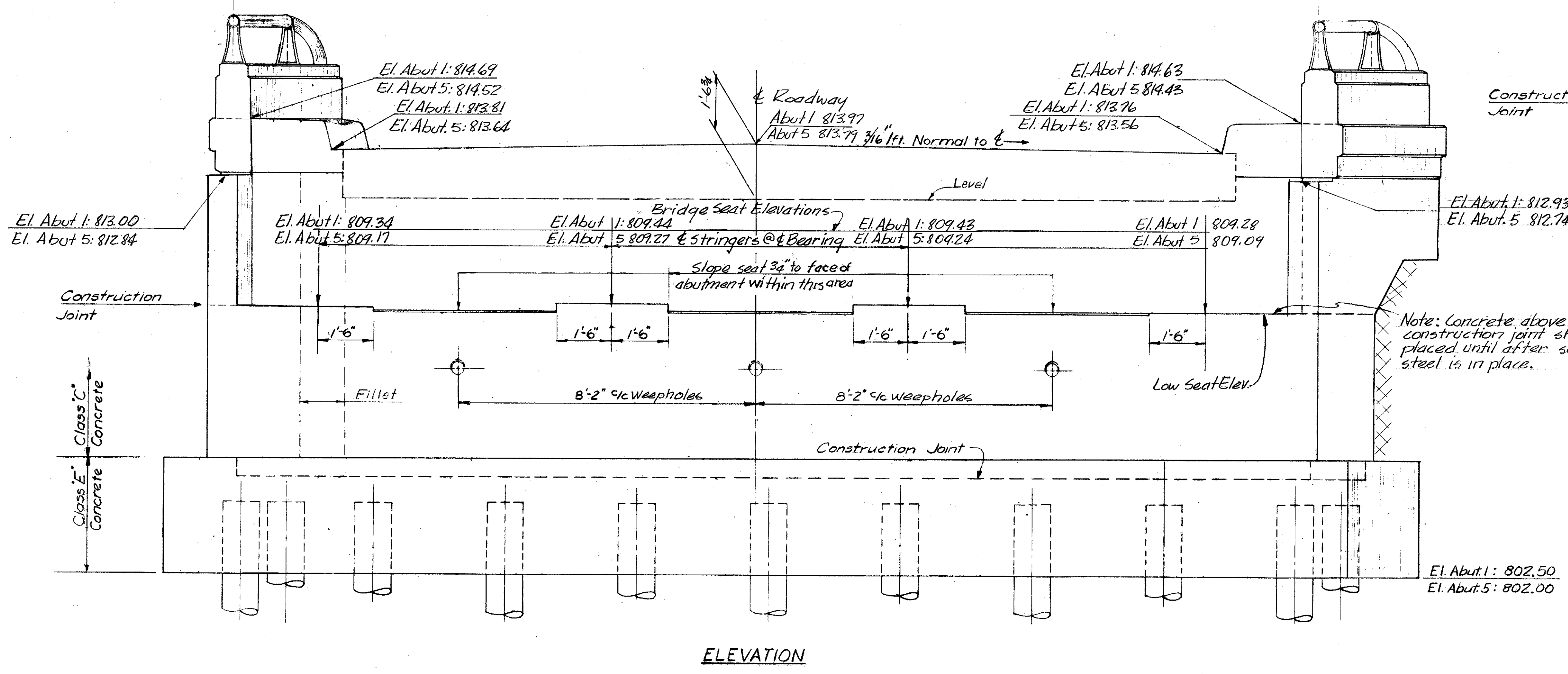


PROCEDURE - The embankment shall be placed and compacted to subgrade elevations after which excavation shall be made for the Abutments.

NOTE: Piles shall be driven to a minimum bearing capacity of 40 tons. The length of penetration of every pile shall be at least 80% of the estimated average length of penetration of the piles in the pertinent abutment as indicated on the site plan unless a lesser penetration is approved by the director. Piles marked thus, O, to be battered 1:4 in direction of arrow.  
Holes for piles shall be pre-drilled through fill material. Hole size through fill shall be 1" less in diameter than calculated diameter of in-place pile at base of fill.  
Test pile as indicated on footing plan required of Abut. 1 only and shall be used as a service pile.  
All piles shall be 12" butt diameter cast-in-place reinforced concrete piles.



Note: Reinforcing Steel shall clear the face of the concrete 2" unless otherwise noted.



CHARLES L. BARBER AND ASSOCIATES  
HARRY BALLE ENGINEERS  
TOLEDO, OHIO

ABUTMENT DETAILS

BRIDGE NO. LAK-1-2696  
SK1 UNDER BATES RD.  
LAKE CO. SK1  
STA. 42+78.69

DESIGNED	DRAWN	TRACED	CHECKED	REVIEWED	DATE	REVISED
LTT	EFS		JPR	ACA	8/28/57	