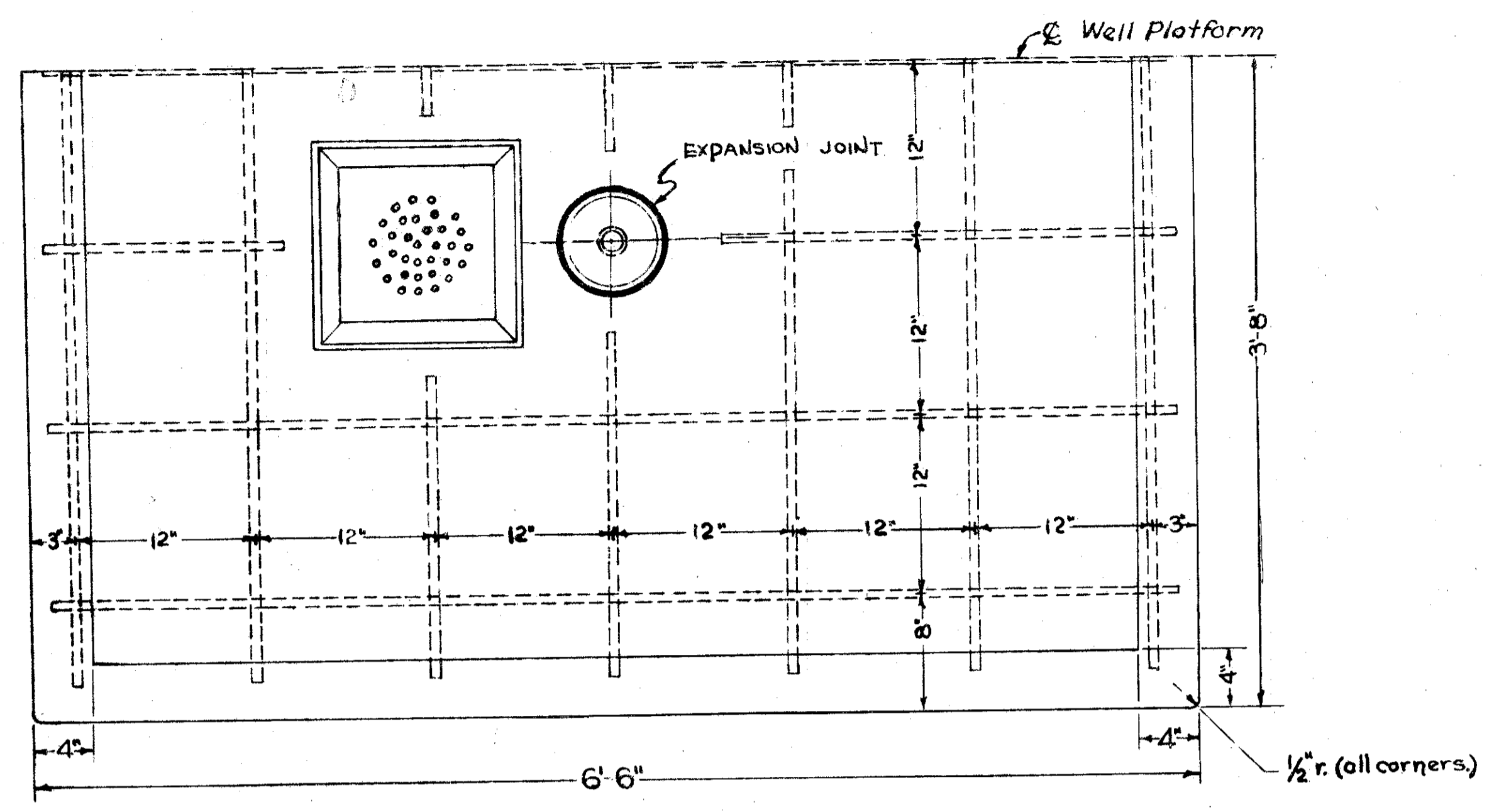


FED. RD. DIVISION	STATE	PROJECT	TYPE FUNDS
2	OHIO	I-1103 (5)	



LAKE COUNTY
LAK-1-26.51
ASHTABULA COUNTY
ATB-1-000



PART-PLAN

PAYMENT INCLUDED IN UNIT PRICE BID FOR "ITEM SPECIAL WELL SHELTER."

BILL OF MATERIAL

- 1 HAND DRINKING FOUNTAIN TYPE PUMP (INCLUDING PUMP CYLINDER).
- 1 CU. YD. CLASS "C" CONCRETE
- AGGREGATE SHALL CONFORM TO 1-22 GRADING "C" OR "D".
- 1 12" X 12" X 6" CAST IRON DRAIN
- 2 3/4" Ø X 1' 9" REINFORCING STEEL
- 2 3/4" Ø X 4' 0" REINFORCING STEEL
- 5 3/4" Ø X 6' 0" REINFORCING STEEL
- 3 3/4" Ø X 6' 10" REINFORCING STEEL

NOTES

THE LOCATION OF 4" STORM SEWER SHALL BE FURNISHED ON REST AREA PLAN.

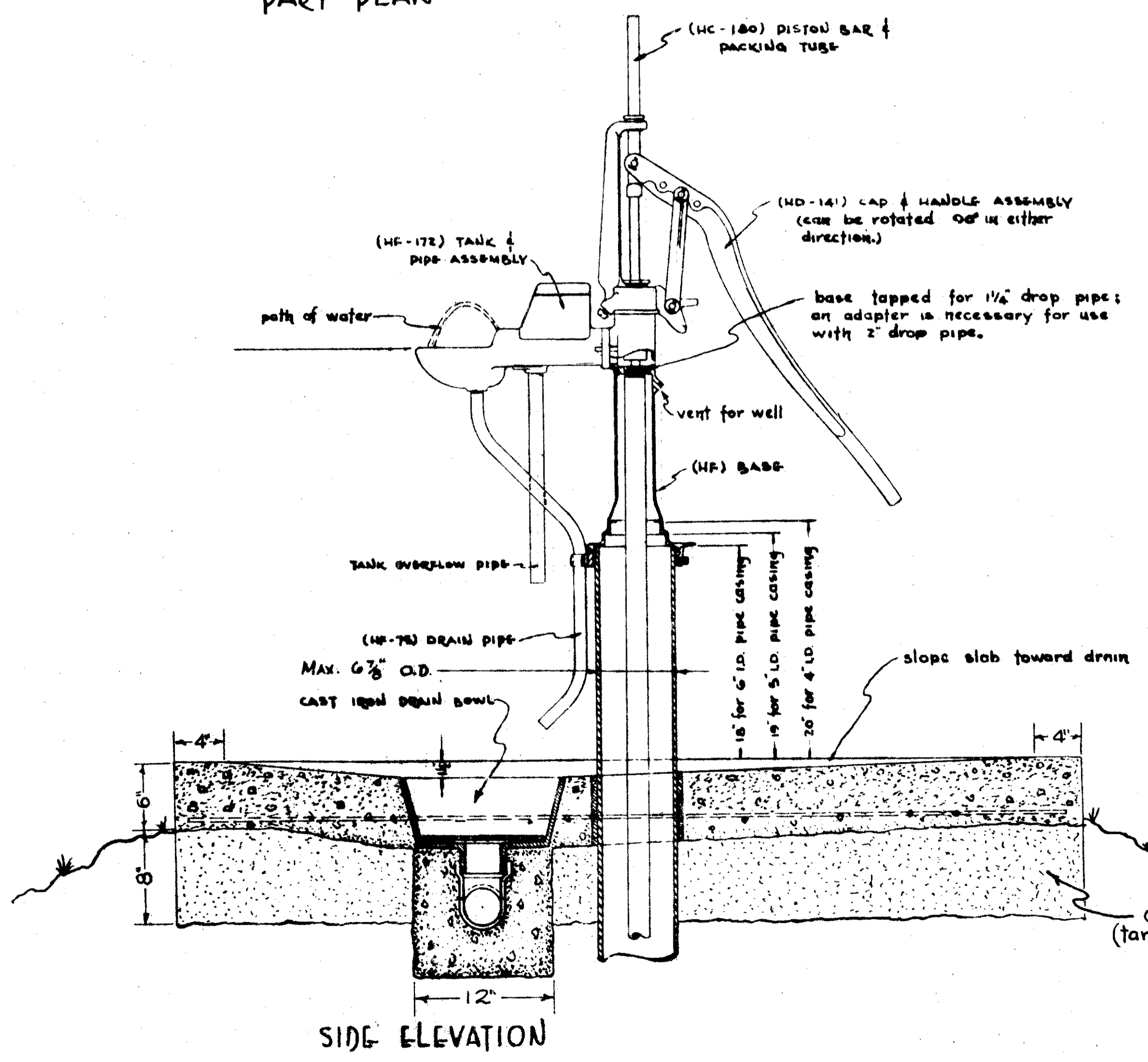
FLOOR SLAB MAY BE POURED INTEGRAL WITH THE WELL SHELTER FOOTER. (SEE DETAILED DRAWING OF WELL SHELTER.)

HAND DRINKING FOUNTAIN TYPE PUMP SHALL BE MODEL 1-H F AS MANUFACTURED BY BAKER MANUFACTURING COMPANY, EVANSVILLE, WISCONSIN OR AN APPROVED EQUAL.

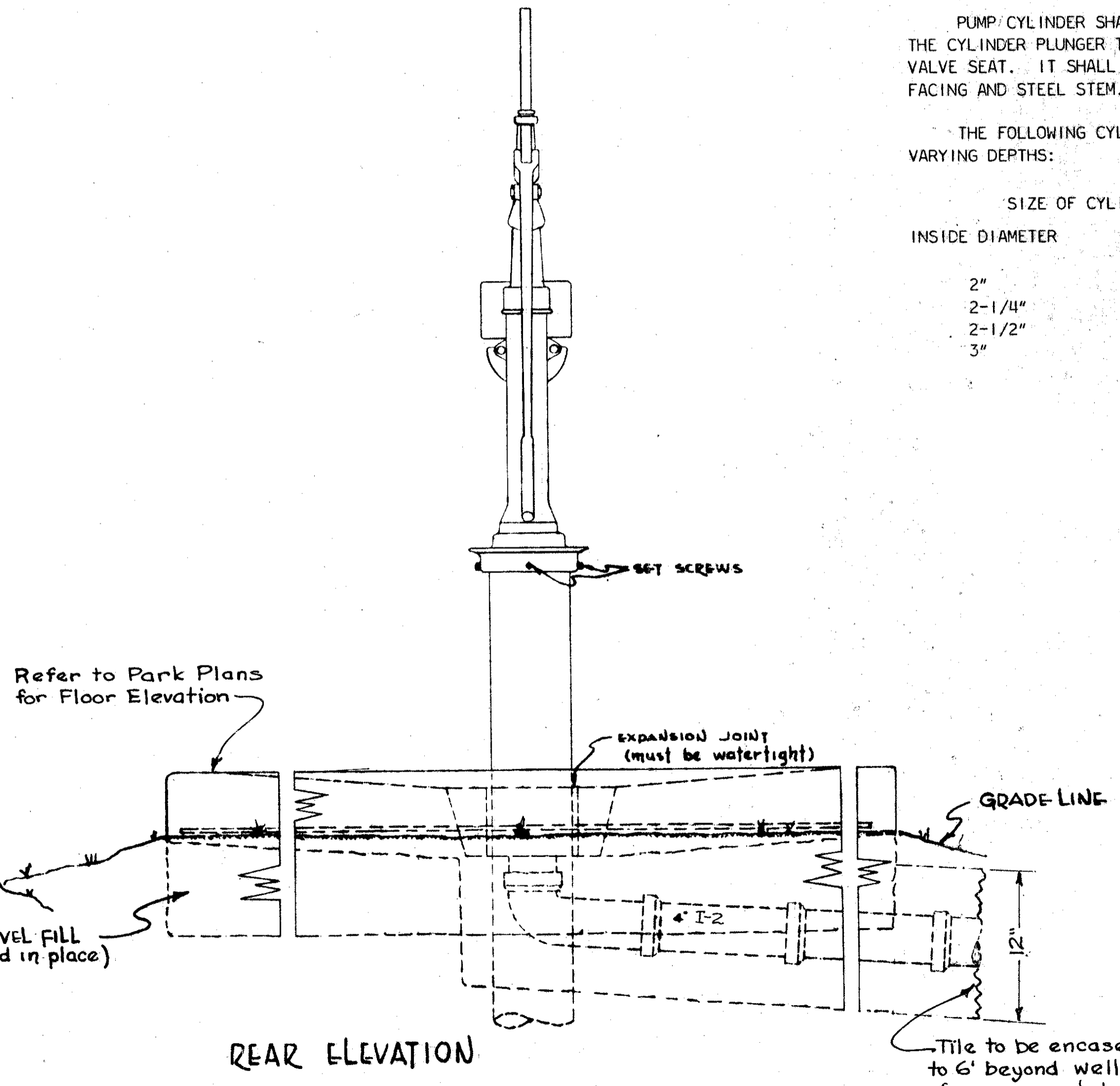
PUMP CYLINDER SHALL BE BRASS BODY CYLINDER OR BRASS LINED. THE CYLINDER PLUNGER TO HAVE CAST IRON CAGE, BRASS FOLLOWER AND VALVE SEAT. IT SHALL HAVE BRASS POPPET WING VALVE WITH RUBBER FACING AND STEEL STEM.

THE FOLLOWING CYLINDER SIZES ARE RECOMMENDED FOR WELLS OF VARYING DEPTHS:

INSIDE DIAMETER	OVER-ALL LENGTH	MAXIMUM DEPTH OF SETTING	RECOMMENDED FOR SIZE OF CYLINDER
2"	10"	200'	
2-1/4"	10"	175'	
2-1/2"	10"	150'	
3"	10"	75'	



SIDE ELEVATION



REAR ELEVATION

Tile to be encased in concrete to 6' beyond well shelter. Cost of encasement shall be included in cost of 4" Storm Sewer, Item I-2

Feb. 28, 1947 Jan. 28, 1953 Dec. 7, 1955	STATE OF OHIO DEPARTMENT OF HIGHWAYS ROADSIDE REST		
PUMP & WELL PLATFORM			
DATE June 11, 1937	DESIGNED C.A.W.	TRACED	APPROVED W.J.G.
SCALE 1/2" = 1'-0"			