

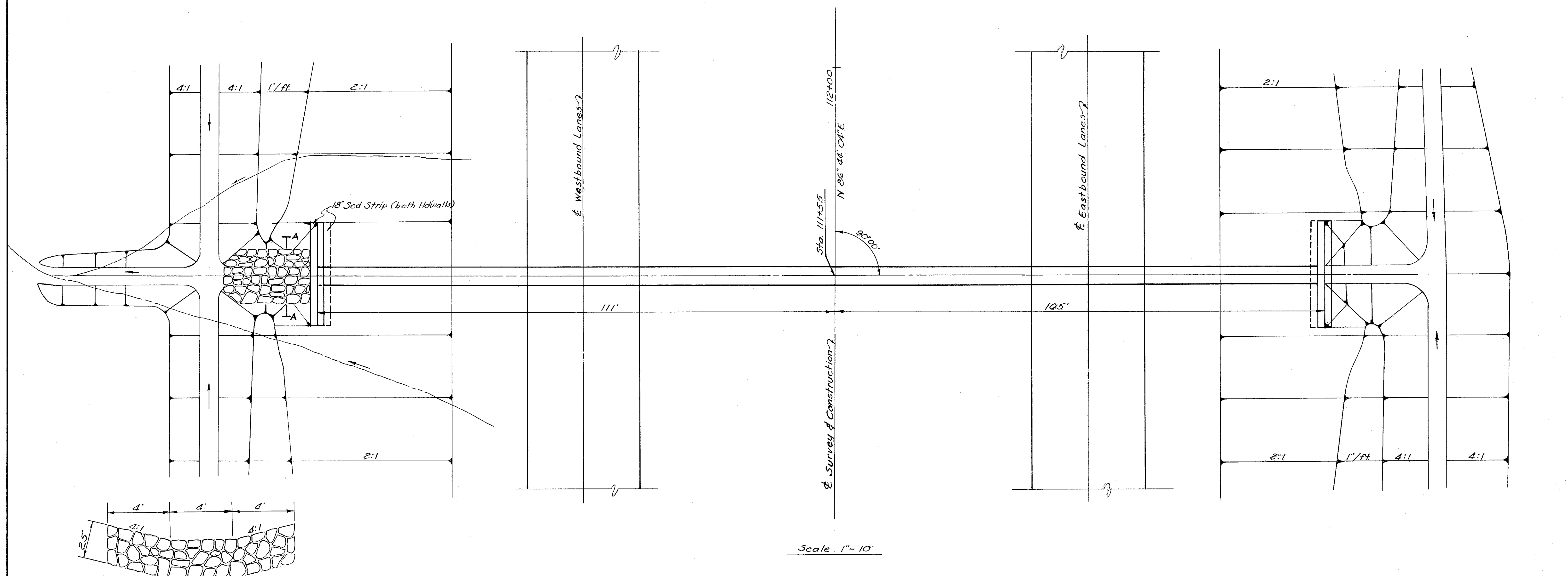
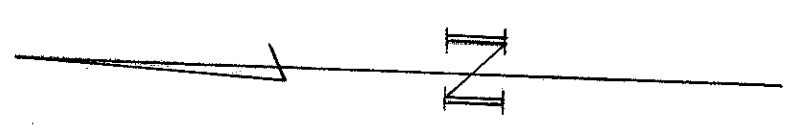
FED. RD. DIVISION	STATE	PROJECT	
2	OHIO	I-1103(15)	

107
176

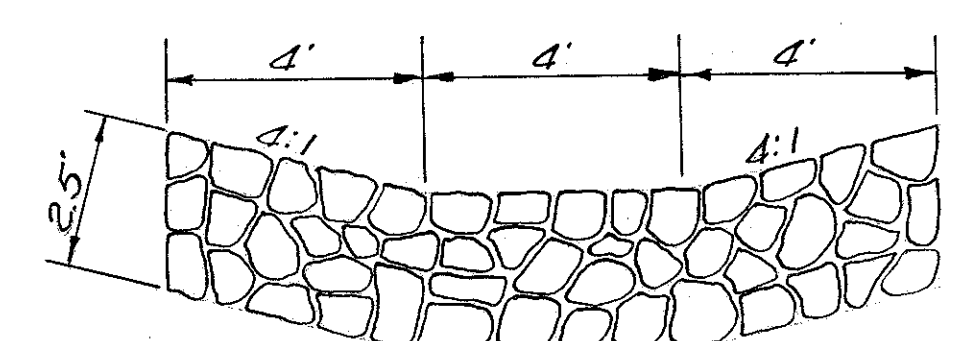
LAKE COUNTY
LAK-1-26.51
ASHTABULA COUNTY
ATB-1-0.00

ESTIMATED QUANTITIES

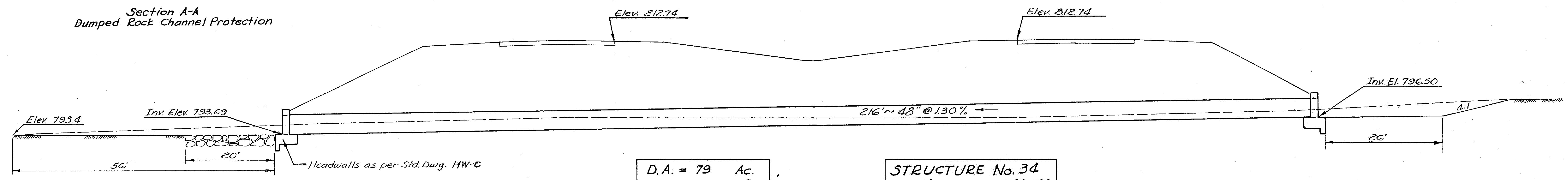
Item	Description	Quantity	Unit
E-2	Excavation for Structures	112	Cu. Yds.
E-3	Channel Excavation	72	Cu. Yds.
I-10	Dumped Rock Channel Protection	22.2	Cu. Yds.
S-1	Concrete for Structures, Class "C"	30	Cu. Yds.
S-4	Reinforcing Steel	1198	Lbs.
S-27	48" Extra Strength Reinforced Concrete Culvert Pipe, Sec. M6.6(c) or 12 Gage Paved Bituminous Coated Corrugated Metal Pipe Sec. M6.4(d)	216	Lin. Ft.
L-10	Sodding	6	Sq. Yds.



Scale 1" = 10'



Section A-A
Dumped Rock Channel Protection



D.A. = 79 Ac.
Q₅₀ = 96 c.f.s.

STRUCTURE No. 34
Station 111+55 (ATB)