

ESTIMATED QUANTITIES

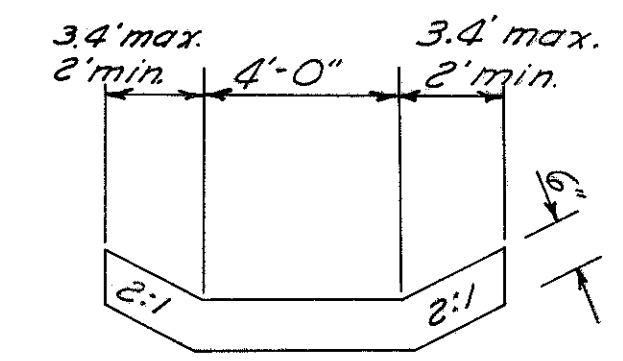
Item	Description	Quantity	Unit
S-27	54" Extra Strength Reinforced Concrete Culvert Pipe, Sec. M-6.6(C) or 8 Gage Pored Bituminous Coated Corrugated Metal Pipe, Sec. M-6.4(d)	218	Lin. Ft.
I-10	Dumped Rock Channel Protection, (as per plan)	27.8	Cu. Yds.
I-10	Riprap, Type "A", (as per plan)	46	Sq. Yds.
S-1	Concrete for Structures, Class "C"	34.0	Cu. Yds.
E-2	Excavation for Structures	138	Cu. Yds.
E-3	Channel Excavation	27	Cu. Yds.
S-4	Reinforcing Steel	1576	Lbs.
S-1*	Concrete for Structures, Class "E"	0.55	Cu. Yds.
L-10	Sodding	10	Sq. Yds.

* Concrete for endwall as per Plan

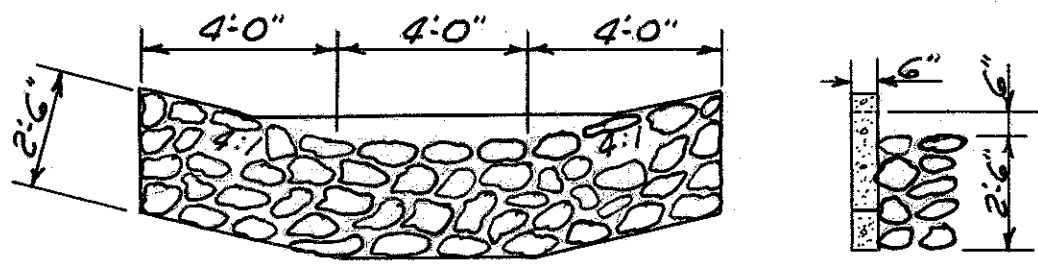
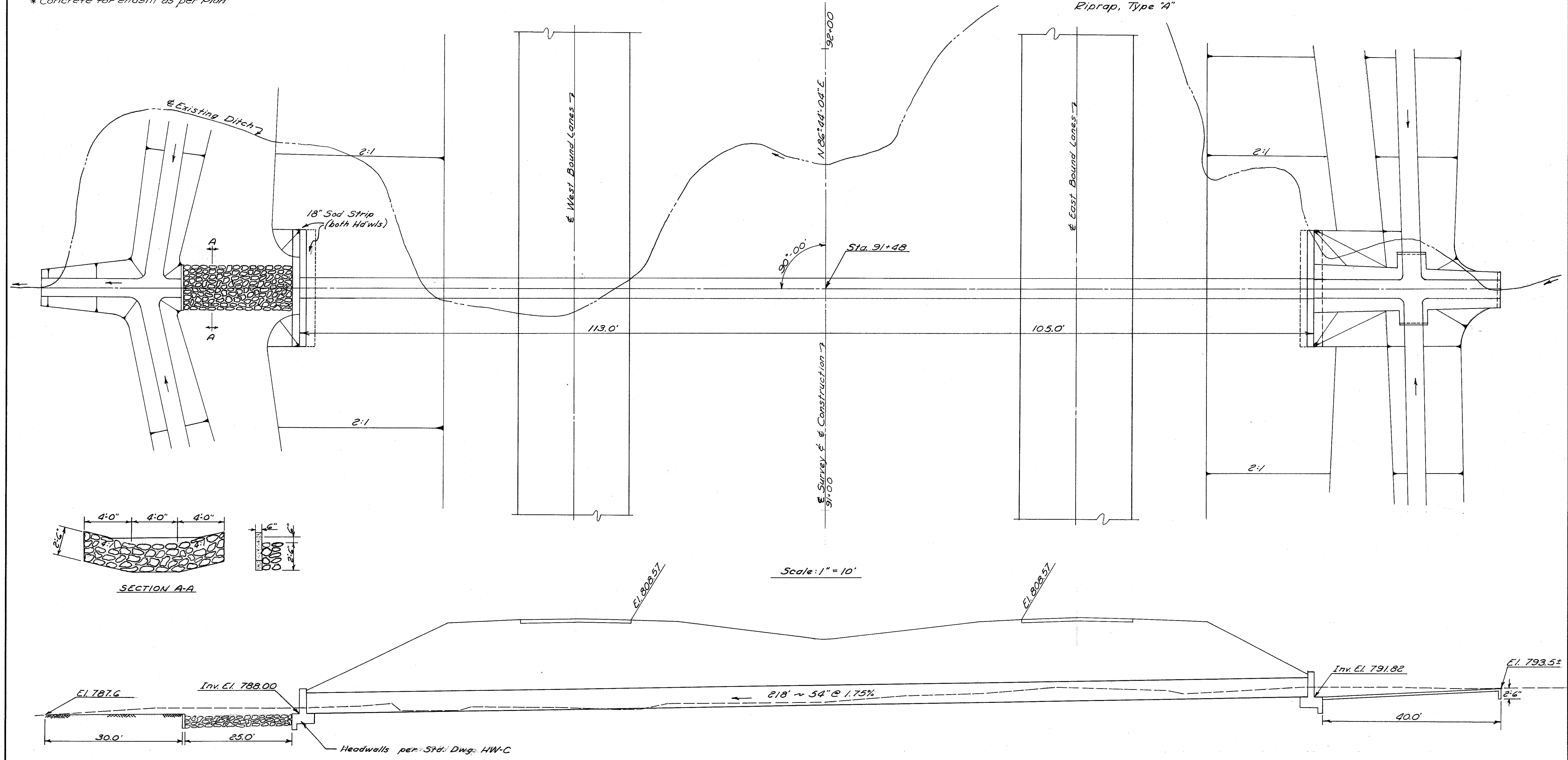
FED. RD. DIVISION	STATE	PROJECT
2	OHIO	I-1103(15)

105
176

LAKE COUNTY
LAK-1-26.51
ASHTABULA COUNTY
ATB-1-0.00



SECTION B-B
Riprap, Type "A"



SECTION A-A

Scale: 1" = 10'

D.A. = 83 Ac
Q₅₀ = 125 cfs.

STRUCTURE NO. 32
STA. 91+48 (ATB)