

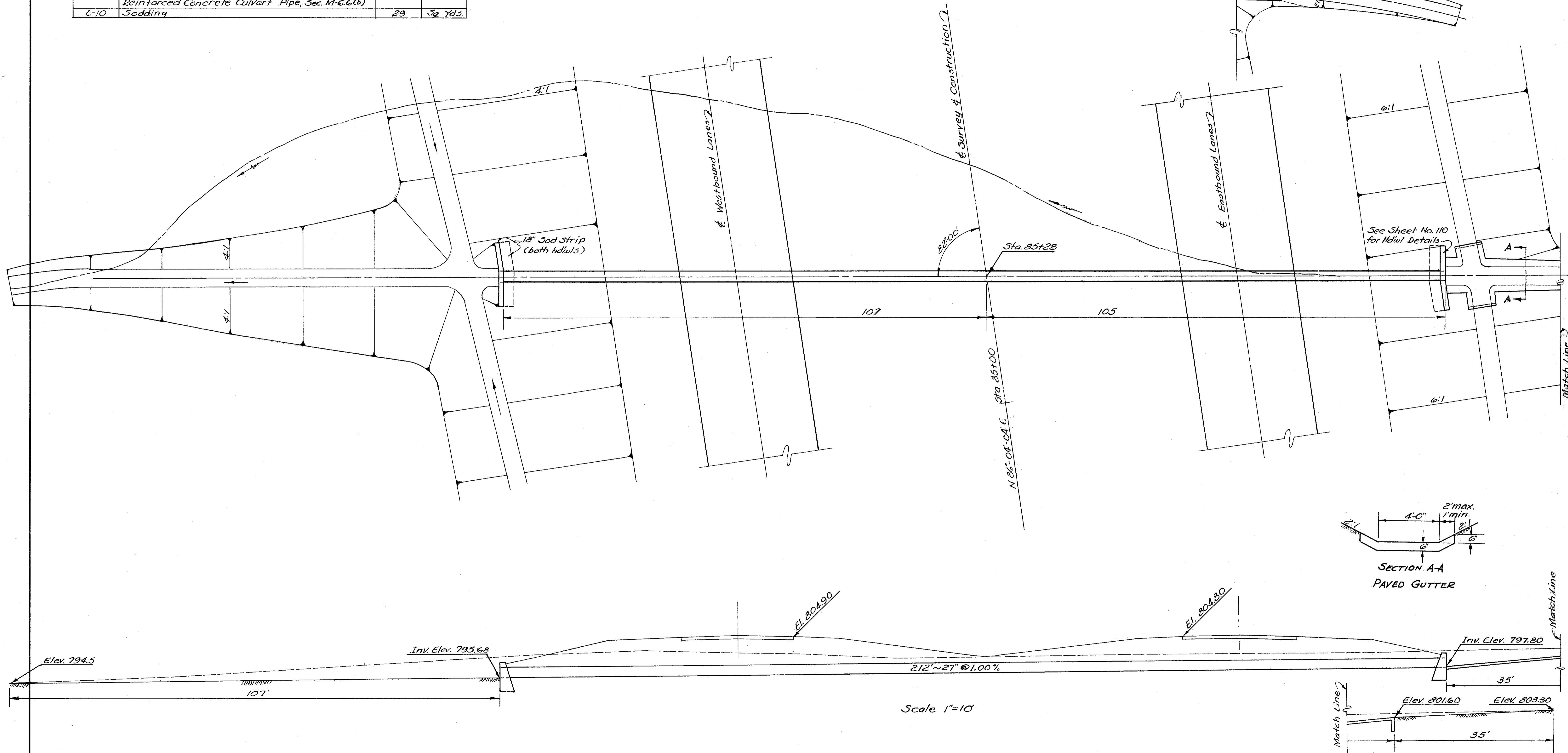
**ESTIMATED QUANTITIES**

Item	Description	Quantity	Unit
E-2	Excavation for Structures	185	Cu. Yds.
E-3	Channel Excavation	196	Cu. Yds.
I-10	Riprap, Type "A" (As per Plan)	30	Sq. Yds.
S-1	Concrete for Structures, Class "C"	13.4	Cu. Yds.
S-4	Reinforcing Steel	574	Lbs.
S-27	27" Extra Strength Vitrified Sewer Pipe, Sec. M-G.8(b) or Standard Strength Reinforced Concrete Culvert Pipe, Sec. M-G.6(b)	212	Lin. Ft.
L-10	Sodding	29	Sq. Yds.

FED. RD. DIVISION	STATE	PROJECT	
2	OHIO	I-1103(15)	

104  
176

LAKE COUNTY  
LAK-1-26.51  
ASHTABULA COUNTY  
ATB-1-0.00



D.A. = 17 Ac.  
Q<sub>50</sub> = 31 c.f.s.

STRUCTURE No. 31  
Station 85+28 (ATB)