

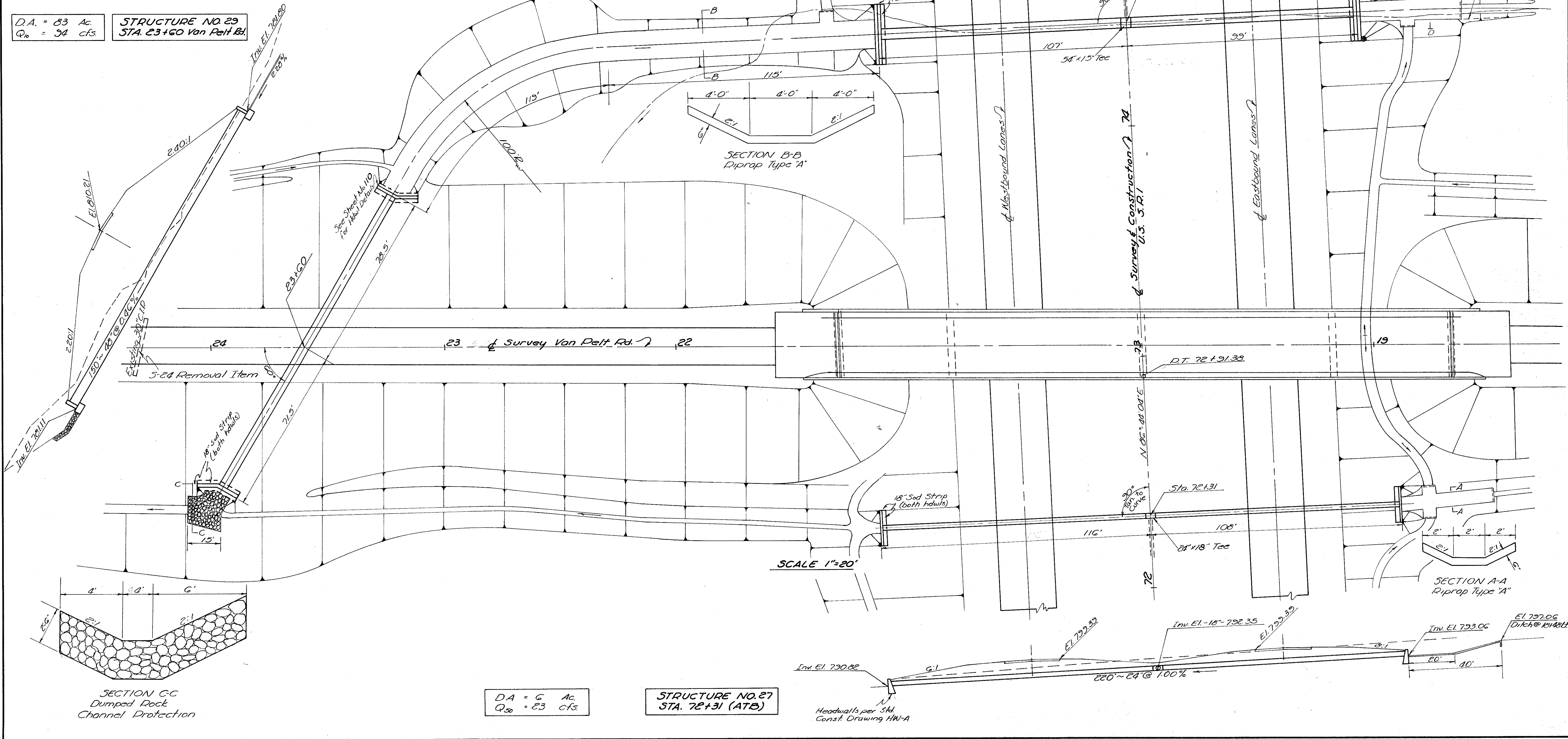
ESTIMATED QUANTITIES

Item	Description	Quantities			Unit
		Struct 27	Struct 28	Struct 29	
E-2	Excavation for Structures	154	181	181	Cu.Yd.
E-3	Channel Excavation	384	453	453	Cu.Yd.
F-10	Dumped Rock Channel Protection		25.0	25.0	Cu.Yd.
F-10	Riprap Type A	26.7	209	166	Sq.Yd.
S-1	Concrete for Structures, Class "C"	10.2	34	24	Cu.Yd.
S-4	Reinforcing Steel	436	1576	974	Lbs.
S-27	54" Pipe for Roadway Culverts		202		Lin.Ft.
S-27	24" Standard Strength Reinforced Concrete Culu. Pipe, Sec. M.G.G.(b) or Extra Strength Vitrified Sewer Pipe, Sec. M. G. B(b)	220			Lin.Ft.
S-27	48" Heavy Duty Reinforced Concrete Culvert Pipe, Sec. M.G.G.(d) or 8 Gage Paved Bituminous Coated Corrugated Metal Pipe, Sec. M.G.4.(d)			150	Lin.Ft.
L-10	Sodding	7	35	9	Sq.Yd.
F-5	Pipe Specials 24"x18" & 54"x15" Tees	1	1	1	Each
S-24	Removal of Existing Structures			1	Lump

FED. RD. DIVISION	STATE	PROJECT	
2	OHIO	I-1103(15)	

LAKE COUNTY
LAK-1-26.51
ASHTABULA COUNTY
ATB-1-0.00

103
176



D.A. = 83 Ac.
Q₅₀ = 94 cfs

STRUCTURE NO. 29
STA. 23+60 Van Pelt Rd.

DA = 78 Ac.
Q₅₀ = 128 cfs

STRUCTURE NO. 28
STA. 74+44 (ATB)

DA = 6 Ac.
Q₅₀ = 23 cfs

STRUCTURE NO. 27
STA. 72+31 (ATB)

SECTION C-C
Dumped Rock
Channel Protection

Section D-D
Riprap Type A

SECTION B-B
Riprap Type A

SECTION A-A
Riprap Type A

SCALE 1"=20'

Headwalls per Std. Const. Drawing HW-A

Headwalls per Std. Const. Drawing HW-C