

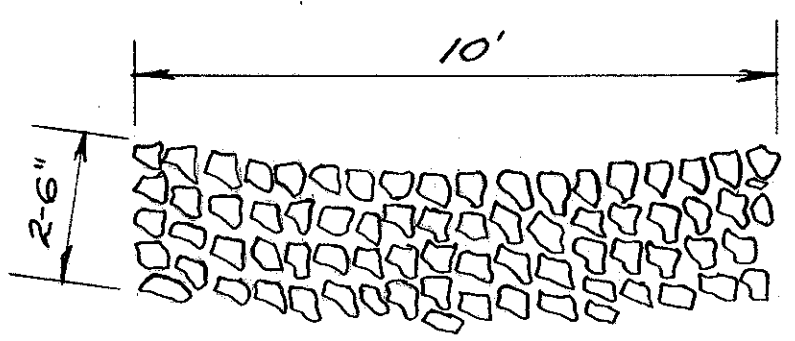
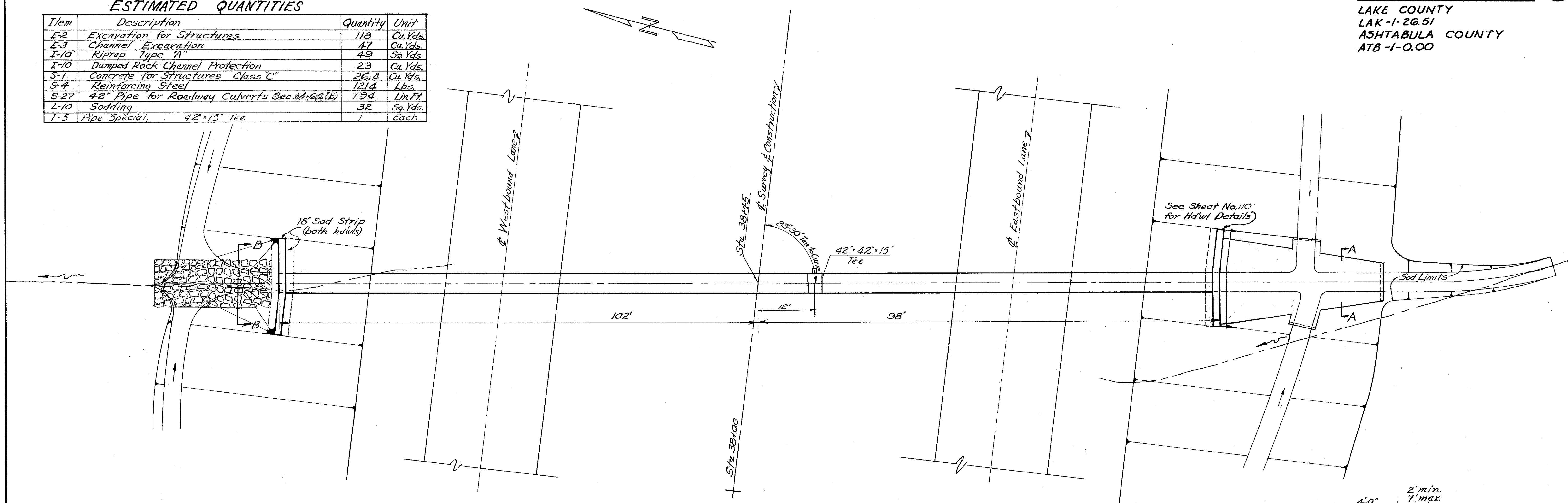
FED. RD. DIVISION	STATE	PROJECT	
2	OHIO	I-1103 (15)	

84
176

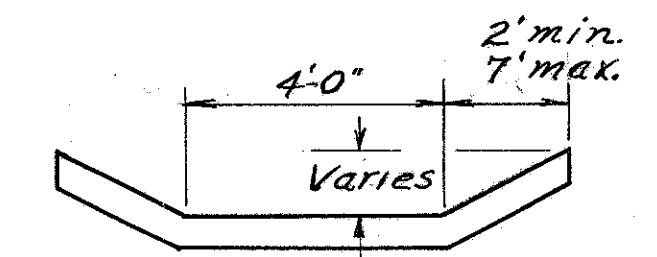
LAKE COUNTY
LAK-1-26.51
ASHTABULA COUNTY
ATB-1-0.00

ESTIMATED QUANTITIES

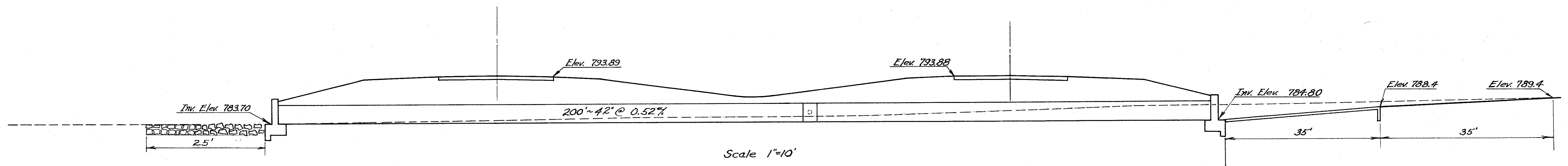
Item	Description	Quantity	Unit
E-2	Excavation for Structures	118	Cu. Yds.
E-3	Channel Excavation	47	Cu. Yds.
I-10	Riprap Type "A"	49	Sq. Yds.
I-10	Dumped Rock Channel Protection	23	Cu. Yds.
S-1	Concrete for Structures Class "C"	26.4	Cu. Yds.
S-4	Reinforcing Steel	1214	Lbs.
S-27	42" Pipe for Roadway Culverts Sec. M.C. 66 (b)	194	Lin. Ft.
L-10	Sodding	32	Sq. Yds.
I-5	Pipe Special, 42" x 15" Tee	1	Each



Section "BB"
DUMPED ROCK CHANNEL PROTECTION



Section "AA"
TYPE "A" RIPRAP



Scale 1"=10'

D.A. = 33 Ac.
Q₅₀ = 69 c.f.s.

STRUCTURE No. 6
Station 38+45 (LAKE)