

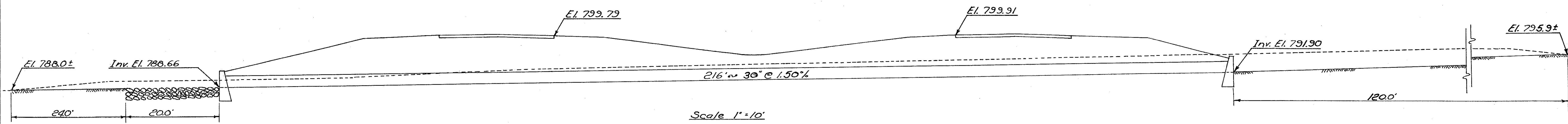
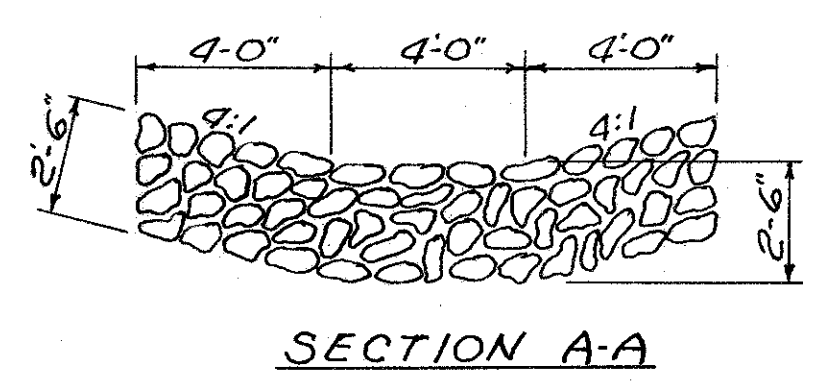
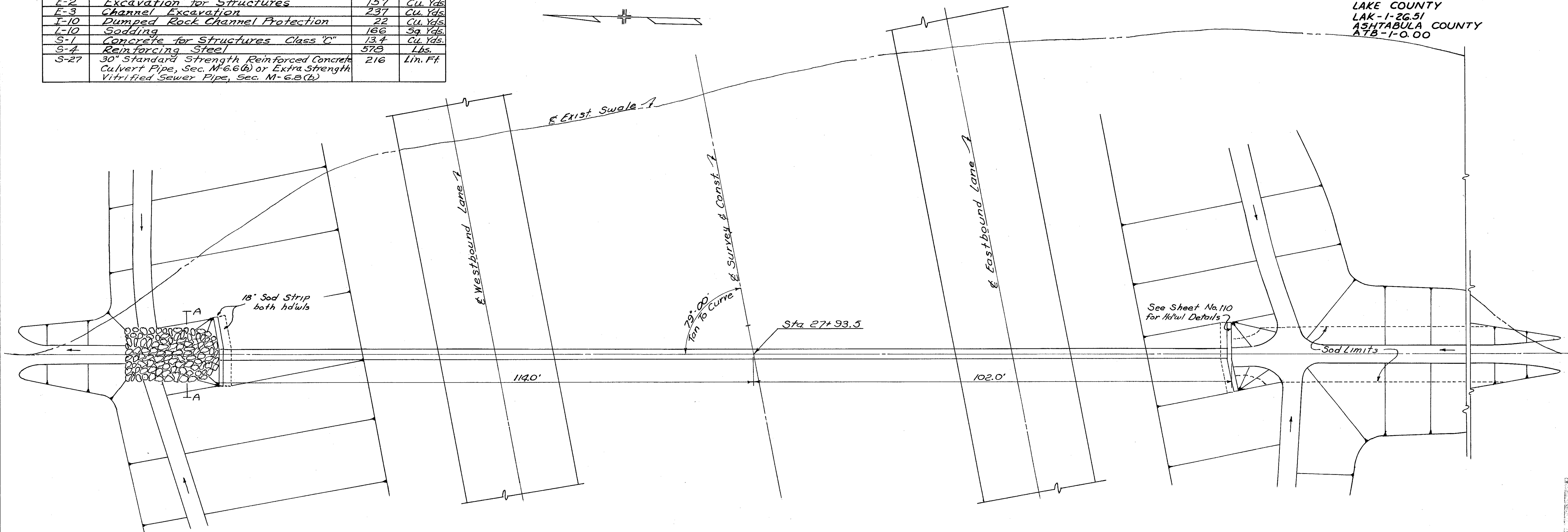
ESTIMATED QUANTITIES

Item	Description	Quantity	Unit
E-2	Excavation for Structures	157	Cu. Yds
E-3	Channel Excavation	237	Cu. Yds
F-10	Dumped Rock Channel Protection	22	Cu. Yds
L-10	Sodding	166	Sq. Yds.
S-1	Concrete for Structures Class "C"	13.4	Cu. Yds.
S-4	Reinforcing Steel	573	Lbs.
S-27	30" Standard Strength Reinforced Concrete Culvert Pipe, Sec. M-6.6(B) or Extra Strength Vitrified Sewer Pipe, Sec. M-6.8(B)	216	Lin. Ft.

FED. RD. DIVISION	STATE	PROJECT
2	OHIO	I-1103 (15)

82
176

LAKE COUNTY
LAK-1-26.51
ASHTABULA COUNTY
ATB-1-0.00



D.A. = 19 Ac.
Q₅₀ = 43 cfs

STRUCTURE No. 4
Station 27+93.5 (Lake)