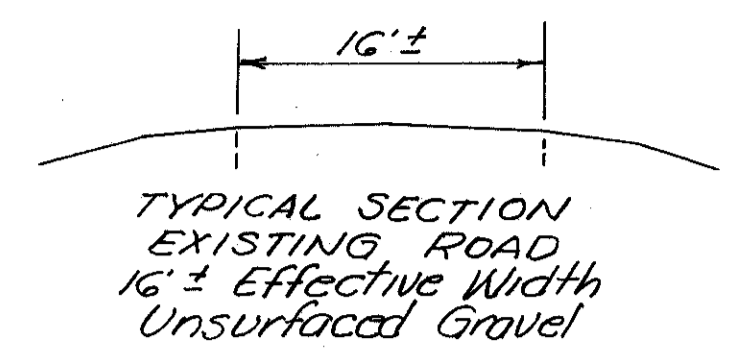
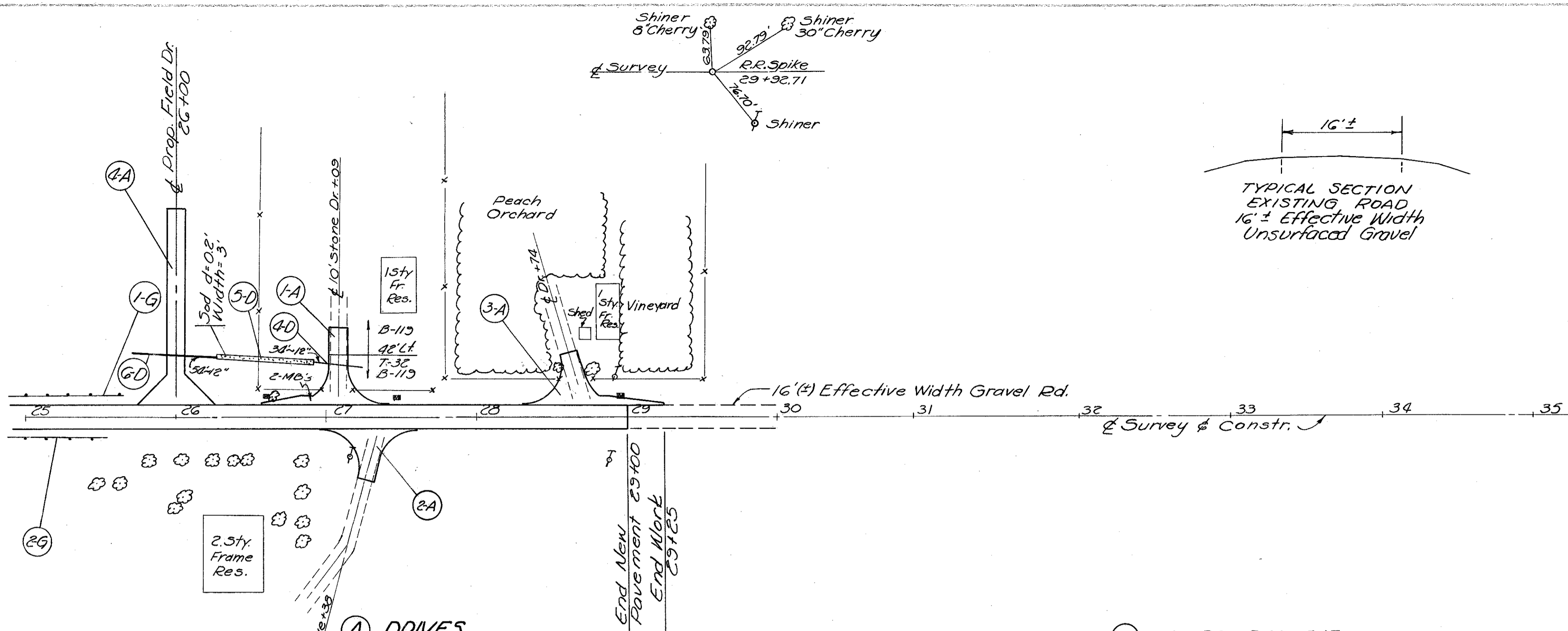
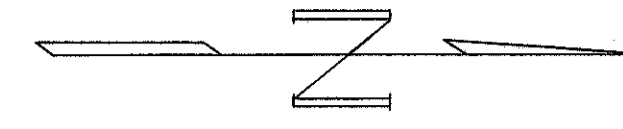


LAKE COUNTY
LAK - 1-26.51
ASHTABULA COUNTY
ATB - 1-0.00



ESTIMATED QUANTITIES

Item	Description	Unit	Quantity
F-32	No. 46 Aggregate for Road Mix	Cu.Yd.	127.9
T-32	Bituminous Material for Road Mix	Gals.	2055.6
F-32	No. 6 or 9 Aggregate for Choke	Cu.Yd.	9.2
F-32	No. 6 Aggregate for Seal Coat	Cu.Yd.	18.3
T-32	Bituminous Material for Seal Coat	Gals.	371.0
B-119	5" Crushed Aggregate Base Course	Cu.Yd.	337.0
F-22	4" Subbase	Cu.Yd.	310.8
F-30	Bituminous Prime Coat	Gals.	799.4
E-101	Compacted Subgrade	Sq.Yd.	243.6
I-7	Reinforced Concrete Approach Slabs	Sq.Ft.	152

(A) DRIVES

Ref. No.	Station	Side	Type	Width	F-32 No. 46 Aggreg.		F-32 Bitum. Mater. Road Mix		F-32 No. 6 or 9 Aggreg. Choke		F-32 Bitum. Mater. Seal		B-119 5" Base		B-119 6" "	
					Ft.	Cu.Yd.	Gal.	Cu.Yd.	Gal.	Cu.Yd.	Gal.	Cu.Yd.	Gal.	Cu.Yd.	Gal.	
1-A	27+09	Lt.	Res.	12	4.4	71.1	0.3	0.6	19.8	22.9						
2-A	27+35	Rt.	Res.	12	5.0	80.1	0.4	0.7	22.3	23.8						
3-A	28+74	Lt.	Field	12	6.6	105.3	0.5	0.9	29.3	26.0						
4-A	26+00	Lt.	Field	12												
Totals					16.0	256.5	1.2	2.2	71.4	68.7						36.3

(G) GUARD RAIL, I-15

Ref. No.	Station		Side	Wire Cable Lin. Ft.
	From	To		
1-G	25+00	25+63.2	Lt.	63.2
2-G	25+00	25+48.5	Rt.	48.5
Total				111.7

Note: See Sheet No. 77 for Drainage Quantities

