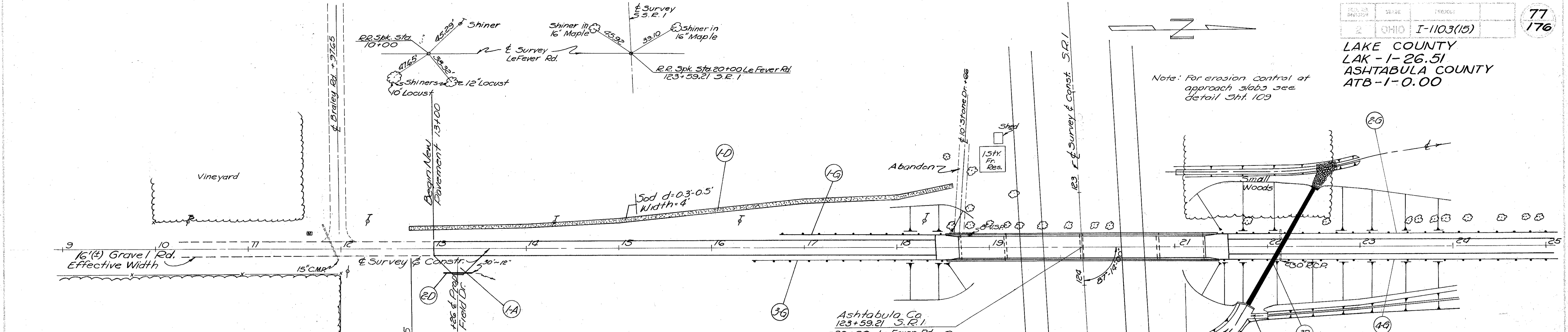


LAKE COUNTY
LAK-1-26.51
ASHTABULA COUNTY
ATB-1-0.00

Note: For erosion control of approach slabs see detail Sht. 109



PROPOSED STRUCTURE DATA
 TYPE: Continuous Steel Beam with Reinf. Conc. Deck & Substructure
 SPANS: 48' 11 1/2" - 81' 7 1/8" - 81' 7 1/8" - 48' 11 1/2" c/c Brg.
 ROADWAY: 28'-0" f/f Safety Curbs
 LOAD FREQ: C.F. 30(51)
 SKEW: 2° 46' RF
 SURFACE: 1/2" Monolithic Conc.
 APPROACH SLABS: 25'-0" Long
 ALIGNMENT: Tangent
 BRIDGE NO: ATB-1-0233

⑥ GUARD RAIL, I-15

Ref. No.	Station		Side	Wire Cable Lin. Ft.
	From	To		
1-G	16+75.5	18+51.5	Lt	176.0
2-G	21+47.2	25+00	Lt	352.8
3-G	16+44.5	18+32.5	Rt	208.0
4-G	21+48.5	25+00	Rt	351.5
Total				1088.3

④ DRAINAGE

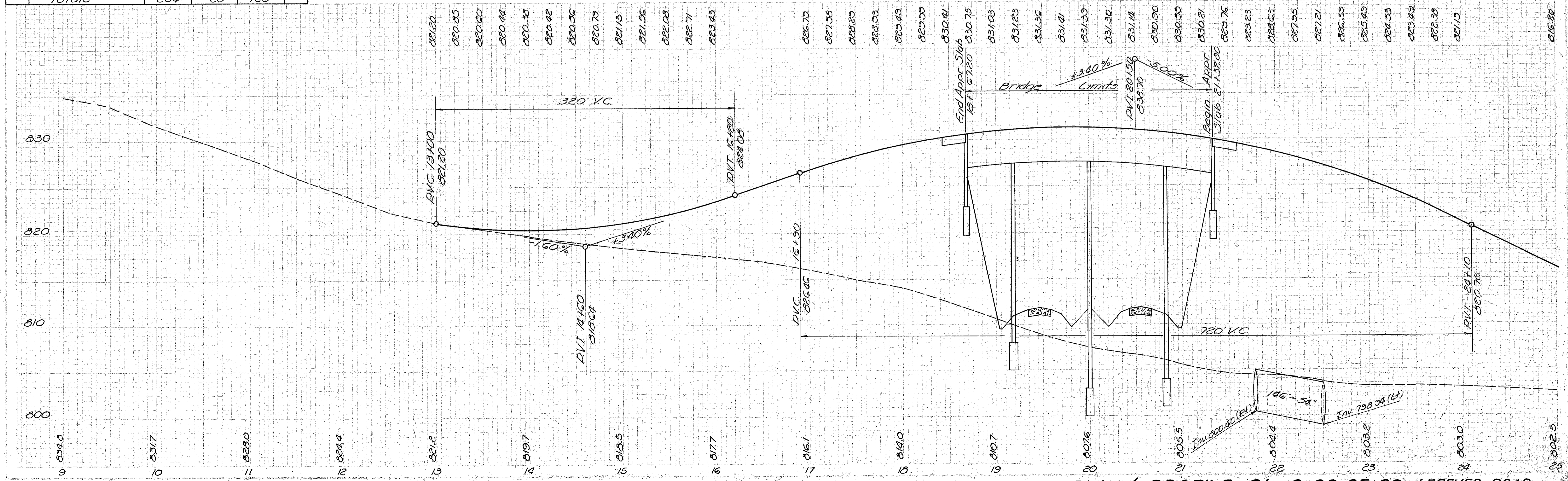
Ref. No.	Station		Side	L-10 Sodding Sq. Yds.	I-12 Type I Paved Gutter Lin. Ft.	I-1 12" Pipe for Driveways Lin. Ft.	See Sht. No.
	From	To					
1-D	12+75	18+60	Lt	260		30	77
2-D	13+11	13+41	Rt				77
3-D	21+80	22+00	Rt	4	20		77
4-D	26+30	27+34	Lt			34	78
5-D	26+27	26+30	Lt	30			78
6-D	25+71	26+27	Lt			56	78
Totals				294	20	120	

① DRIVES

Ref. No.	Station	Side	Type	Width	B-119 G.	
					FF	C.Y.
1-A	13+26	Rt	Field	12	11.5	

STRUCTURES 20' SPAN & UNDER

Str. No.	Station	Proposed		Details on Sheet
		Type	Size	
37	22+15	Dipe	54" 186	108



PLAN & PROFILE Sta. 9+00-25+00 LEFEVER ROAD