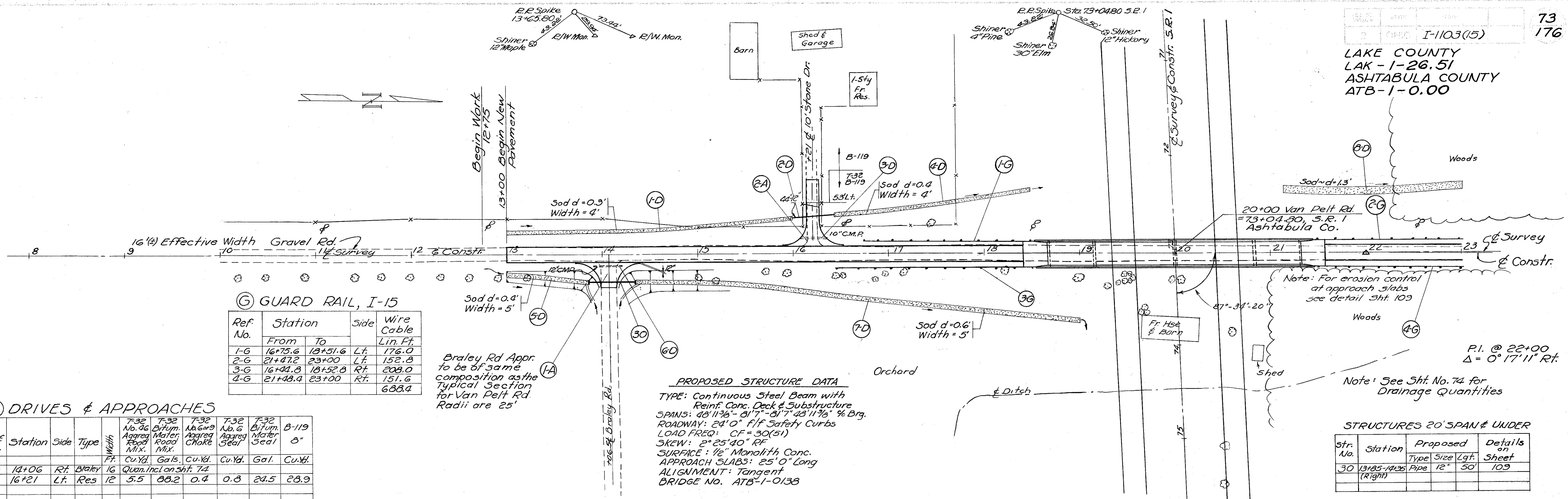


LAKE COUNTY
LAK-1-26.51
ASHTABULA COUNTY
ATB-1-0.00



Ⓒ GUARD RAIL, I-15

Ref. No.	Station		Side	Wire Cable Lin. Ft.
	From	To		
1-G	16+75.6	18+51.6	Lt.	176.0
2-G	21+47.2	23+00	Lt.	152.8
3-G	16+44.8	18+52.8	Rt.	208.0
4-G	21+48.4	23+00	Rt.	151.6
				688.4

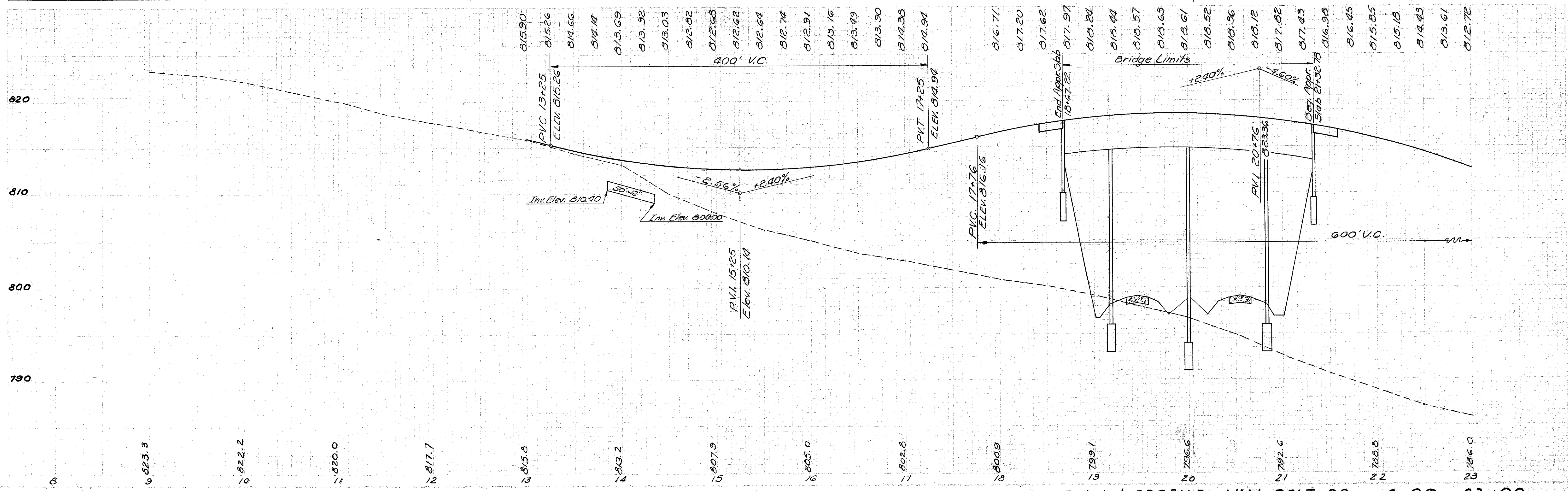
PROPOSED STRUCTURE DATA
 TYPE: Continuous Steel Beam with Reinf. Conc. Deck & Substructure
 SPANS: 48' 11 3/8" - 81' 7" - 81' 7" - 48' 11 3/8" % Brg.
 ROADWAY: 24' 0" F.F. Safety Curbs
 LOAD FREQ: CF = 30(51)
 SKEW: 2° 25' 40" RF
 SURFACE: 1/2" Monolith Conc.
 APPROACH SLABS: 25' 0" Long
 ALIGNMENT: Tangent
 BRIDGE NO. ATB-1-0138

Ⓐ DRIVES & APPROACHES

Ref. No.	Station	Side	Type	Width	F-32 No. 76		F-32 No. 6099		F-32 No. 6		B-119
					Aggreg. Road Mix.	Water Road Mix.	Aggreg. Choke	Water Seal	Motor	Gal.	
1-A	14+06	Rt.	Driveway	16	Quant. Incl. on Sht. 74						
2-A	16+21	Lt.	Res.	12	5.5	88.2	0.4	0.8	24.5	28.9	

STRUCTURES 20' SPAN & UNDER

Str. No.	Station	Proposed Type	Size	Lgt.	Details on Sheet
30	13+85-14+35 (Right)	Pipe	12"	50'	109



PLAN & PROFILE VAN PELT RD. 8+00 - 23+00